

TEC Professional Services Questionnaire

A. Project Name and Advertisement Resolution Number:

SOQ NO. 22-011 TO PROVIDE ROUTINE ENGINEERING SERVICES FOR
DRAINAGE PROJECTS
RESOLUTION 138811

B. Firm Name & Address where Project work will be performed:



2626 Canal Street, Suite 202
New Orleans, LA 70119

EF.0002603 (EJES, Inc.)

C. Name, title, & contact information of Principal, as defined in Section 2-926 of the Jefferson Parish Code of Ordinances, who is a registered, licensed architect, professional engineer, or surveyor in the State of Louisiana:

Edwin B. Jones, PE, MBA | Principal-in-Charge | LA #27489
Telephone: 214 343-1210 Email: ejones@ejesinc.com

D. Name and contact information of employee who is a registered and licensed architect, professional engineer, or surveyor in the State of Louisiana in the applicable discipline. A subcontractor may be substituted here only if the advertised Project requires more than one discipline.

Tanita Gilbert-Baker, PE, MBA | President | LA#29350
Telephone: 504.218.7103 Email: tbaker@ejesinc.com

E. Please provide the number of employees whose primary function corresponds with each category:

	1	Administrative		Estimators		Specification Writers
	2	Architects (Licensed)		Geologists		Structural Engineers
		Chemical Engineers		Geotechnical Engineers	2	Graduate Engineers
	5	Civil Engineers		Interior Designers	1	Project Managers
	3	Construction Inspectors		Landscape Architects		Clerical
		Ecologists		Land Surveyor		Grant/Funding Specialist
		Electrical Engineers		Mechanical Engineers		Sanitary Engineers
	2	Engineer Intern		Environmental Engineers		
		Professional Land Surveyors			16	TOTAL

F. Is this submittal by a JOINT-VENTURE? Please check: YES _____ NO ✓

If marked "No" skip to Section I. If marked "yes" complete Sections G-H.

TEC Professional Services Questionnaire

G. If submittal is by JOINT-VENTURE, list the firms participating and outline specific areas of responsibility (including administrative, technical, and financial) for each firm. Please attach additional pages if necessary.

1.

N/A

2.

H. Has this JOINT-VENTURE previously worked together? Please check: YES ☐ NO ☐

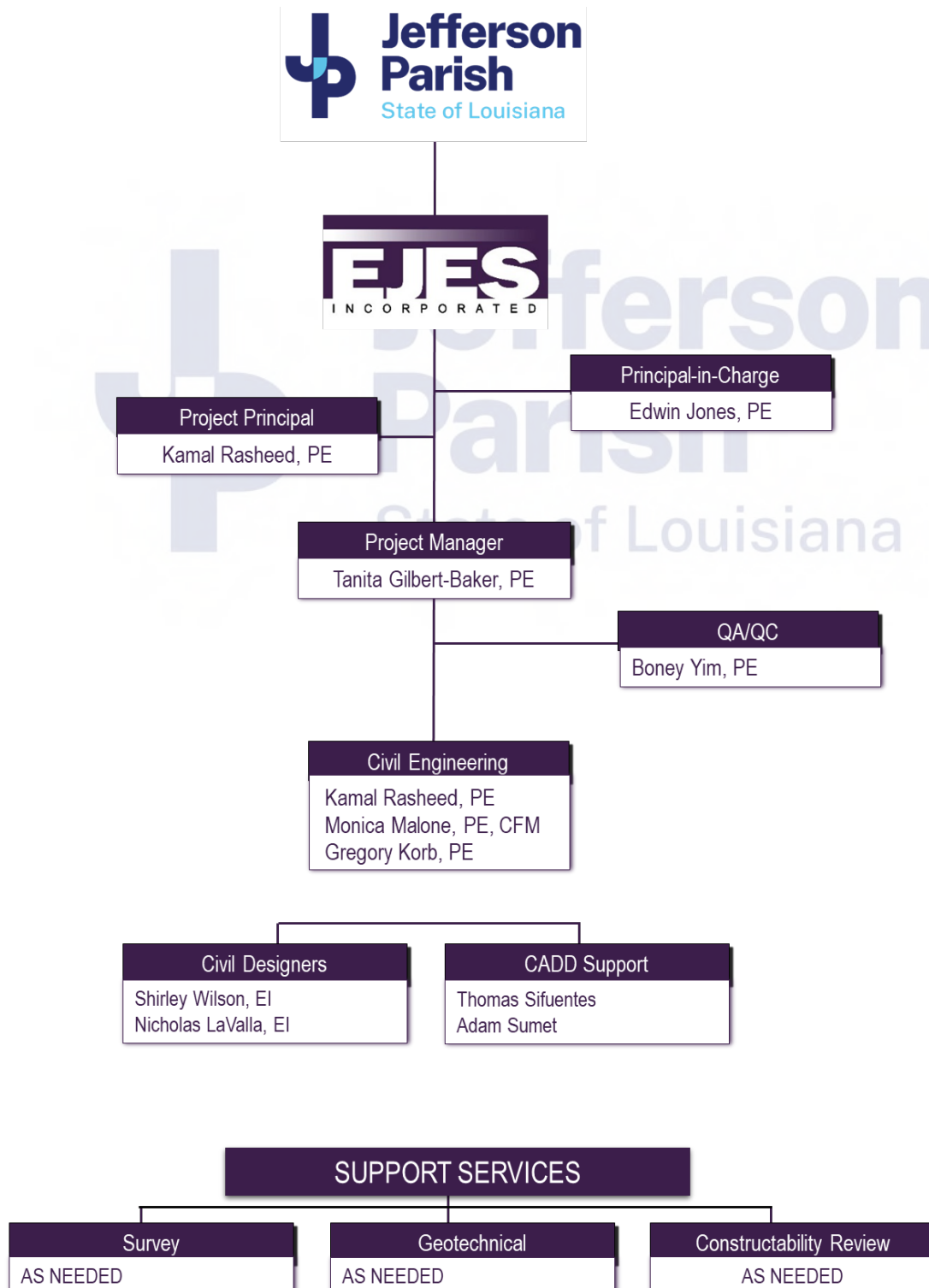
I. List all subcontractors anticipated for this Project. Please note that all subcontractors must submit a fully completed copy of this questionnaire, applicable licenses, and any other information required by the advertisement. See Jefferson Parish Code of Ordinances, Sec. 2-928(a)(3). Please attach additional pages if necessary.

Name & Address:	Specialty:	Worked with Firm Before (Yes or No):
1.		
2.		
3.		
4.		

J. Please specify the total number of support personnel that may assist in the completion of this Project:

TEC Professional Services Questionnaire

K. List the professional in charge, key persons, specialists, and individual consultants anticipated for this Project and provide their relevant information below. If necessary, please attach additional documentation (i.e. resume) that demonstrated the employment history and experience of the Firm's key persons that may assist in the completion of this Project. Please attach additional pages if necessary.



TEC Professional Services Questionnaire

PROFESSIONAL IN CHARGE OF PROJECT
Name & Title:
Edwin B. Jones, P.E., MBA – Principal-in-Charge
Project Assignment
Principal-in-Charge
Name of Firm with which associated:
EJES, Inc.
Years' experience with this Firm:
25
Education: Degree(s)/Year/Specialization:
B.S./ 1990 / Civil Engineering MBA /2000 / Operations Management
Active Registration: Year first registered/discipline
1997/Civil Engineer – LA #27489 1997/Civil Engineer – TX #82682 2006/Civil Engineer MS #15821
Other experience and qualifications relevant to the proposed Project:
<p>Mr. Jones has over 27 years of experience in Civil Engineering. His experience includes seven (7) years of engineering experience with the Texas Dept. of Transportation. His experience includes transportation planning, highway design, hydraulics/drainage design, bridge layouts, water/sewer design, site development, and environmental services. Mr. Jones is experienced with engineering analysis and design software including GeoPak, Eagle Point, WINSTORM, THYSIS, HEC RAS, Micro station and AutoCAD.</p> <p>RELEVANT EXPERIENCE</p> <p>JEFFERSON PARISH - GULIZO CANAL DRAINAGE IMPROVEMENTS <i>JEFFERSON PARISH, LA</i> Principal-in-Charge for design services for project that includes the installation of approximately 1250 ft. of 96" RCPA along Giaise Street between Belle Terre Road and Lapalco Blvd. including catch basins, outfall, street replacement (as necessary), mill and overlay of roadway, relocations of any utilities that interfere with the construction, and all other incidentals.</p> <p>OCKLEY DITCH IMPROVEMENTS – 01-D007 <i>SHREVEPORT, LA</i> Principal-in-Charge for design services on the improvement of approximately 1200 LF of the Ockley Ditch from Normandy Village west of Fairfield Avenue and Ratcliff to Southern Avenue. Also providing construction support services.</p> <p>SOUTHERN UNIVERSITY - PINCHBACK PARKING AREA AND DRAINAGE SYSTEM IMPROVEMENTS <i>BATON ROUGE, LA</i> Principal-in-Charge for design and construction services proposed for this project are for construction of a new full depth asphalt pavement parking lot. The project consists of clean existing catch basins, clean existing storm drain pipe, new curb, new sidewalk section(s), ADA handicap ramps (as required), and overhead parking area lighting. The new storm drain catch basins and drain lines that are additional to the existing storm drainage system will be engineered to accommodate a 10-year, 24-hour storm event.</p> <p>SOUTHERN UNIVERSITY - MINIDOME PARKING DRAINAGE IMPROVEMENTS <i>BATON ROUGE, LA</i> Principal-in-Charge for engineering design and construction services proposed for this project generally consist of the following construction activities: Cleaning/ jetting of existing catch basins and pipes to local outfall (Kingfisher Ave. box culvert) for Minidome parking lot. For Minidome perimeter road(s); Provide positive surface water drainage, capture and conveyance; Asphalt pavement resurfacing (mill and overlay) with 15% of surface area considered for full depth reconstruction; Football stadium access road (from Swan Ave.) asphalt pavement resurfacing (mill and overlay) with 15% of surface area considered for full depth reconstruction; Minidome/ Football Stadium connection road asphalt pavement resurfacing (mill and overlay) with 15% of surface area considered for full depth reconstruction; Open-channel ditch improvements; Open-channel concrete lined ditch cleaning; Interior green space area grading and drainage improvements; Green space area grading and drainage improvements for multiple locations. The project also required a new storm drain catch basins and drain lines that are additional to the existing storm drainage system will be engineered to accommodate a 10-year, 24-hour storm event.</p> <p>SPLIT TRAIL ROADWAY AND DRAINAGE IMPROVEMENTS <i>PLANO, TX</i> Principal-in-Charge. Provided PS&E for Split Trail Road from Spring Creek Parkway and Avenue K. Design included improving the of 2-lane concrete roadway with integral curb-and-gutter. Project elements include roadway and drainage design, striping & signage, sidewalks, water line improvements, construction sequencing, and erosion control. Split Trail Road crosses over Brown Branch, located in a FEMA flood Zone AE with a floodway. This location has a history of localized flooding, including measurable impacts at an adjacent trailer park. As part of the CLOMR/LOMR efforts, EJES is performing a detailed hydraulic study, which includes converting the existing FEMA effective HEC-2 models into HEC-RAS for FEMA approval.</p>

TEC Professional Services Questionnaire

KEY PERSON, SPECIALIST, OR INDIVIDUAL CONSULTANT:
Name & Title:
Tanita Gilbert-Baker, PE, MBA – President
Project Assignment
Project Manager
Name of Firm with which associated:
EJES, Inc.
Years' experience with this Firm:
13
Education: Degree(s)/Year/Specialization:
B.S./ 1994 / Civil Engineering MBA /2007/ Business Administration
Active Registration: Year first registered/discipline
2001/Civil Engineer – LA #29350 2001/Civil Engineer – TX #88719 2015/Civil Engineer MS #26522
Other experience and qualifications relevant to the proposed Project:
<p>Ms. Gilbert-Baker is a President of Engineering Services, and she has over 25 years of civil engineering experience specializing in the design and management of municipal street and drainage projects, state highway projects, water/sewer improvements, site planning/design, hydraulic studies and analysis, traffic studies, and airport improvement projects. She has designed and managed projects for private clients as well as local, state, and federal agencies. She has extensive experience in the design and management of roadway and highway drainage projects. She is a licensed engineer in the states of Louisiana, Texas, Arkansas, Mississippi, and Oklahoma. Ms. Baker has designed/managed projects for a wide variety of clients including the Jefferson Parish, City of New Orleans, City of Shreveport, the City of Bossier, Caddo Parish, Bossier Parish, and Desoto Parish.</p> <p>RELEVANT EXPERIENCE</p> <p>JEFFERSON PARISH - GULIZO CANAL DRAINAGE IMPROVEMENTS JEFFERSON PARISH, LA QA/QC for design services for project that includes the installation of approximately 1250 ft. of 96" RCPA along Giaise Street between Belle Terre Road and Lapalco Blvd. including catch basins, outfall, street replacement (as necessary), mill and overlay of roadway, relocations of any utilities that interfere with the construction, and all other incidentals.</p> <p>SOUTH KENNER ROAD JEFFERSON PARISH, LA Project Engineer providing design service for the rehabilitation of a subsurface drainage and sidewalk improvement project. The existing roadway is approximately 22' wide and has steep ditches immediately adjacent to the pavement which creates an unsafe condition. The new section will be 26' wide 2-11' lanes, with 2' shoulders; surface drainage and 4' sidewalks on both sides. Drainage system will include local swales to collect the stormwater runoff into drop inlets, generally spaced at 200'.</p> <p>WESTWOOD DR. RECONSTRUCTION JEFFERSON PARISH, LA Project Engineer assisting with the preparation of plans, specifications, and estimates for the northbound lanes of Westwood Drive from Westbank Expressway to Lapalco Boulevard in Jefferson Parish. Responsible for the preparation of the General Notes/Summary of Quantities, Survey Reference Points and Layout, Existing Drainage Map, Proposed Drainage Map, Sequence of Construction, Opinion of Probably Cost, and Specifications.</p> <p>GENTILLY WOODS (RR061) ROAD IMPROVEMENT PROJECT CITY OF NEW ORLEANS QA/QC. The road improvement project for the City of New Orleans included the development of construction plans, specifications, and cost estimate for the Improvements of 23 Streets of Gentilly Woods Area. The roadway improvements consisted of removing and replacing of full depth or 2-in cold milling and overlay of Asphalt Pavement, removing and replacing of Concrete Pavement, Curbs & Gutters, Sidewalks, Driveways, ADA Complaint handicap Ramps, Edge markings, Pedestrian striping, Drainage inlets, Waterline Replacement as well as Drainage Line Replacement.</p> <p>LAKE VISTA (RR074) ROAD IMPROVEMENT PROJECT CITY OF NEW ORLEANS QA/QC. The road improvement project for the City of New Orleans included the development of construction plans, specifications, and cost estimate for the Improvements of 4 Streets of Lake Vista Community. The Roadway Improvement Consisted of removing and replacing of Concrete Pavement, Curbs & Gutters, Sidewalks, Driveways, ADA Complaint handicap Ramps, Drainage inlets, Waterline Replacement as well as Drainage Line Replacement.</p> <p>READ BLVD IMPROVEMENTS NEW ORLEANS, LA Project Manager for engineering design services necessary to produce construction documents for the rehabilitation of Coronado Drive and Hauck Drive between Chef Menteur Hwy. and Dead End, Chef Menteur Hwy between Cardenas and Coronado, and Prentiss Drive between Schindler and Hauck. The pavement rehabilitation will consist of removal/replacement of existing pavement and base. Concrete sidewalk improvements, including installation of ADA ramps will be included as well as point repairs or full drainage replacements as necessary based on information provided from CCTV.</p>

TEC Professional Services Questionnaire

KEY PERSON, SPECIALIST, OR INDIVIDUAL CONSULTANT:
Name & Title:
Gregory Korb, PE – Senior Civil Engineer
Project Assignment
Senior Civil Engineer
Name of Firm with which associated:
EJES, Inc.
Years' experience with this Firm:
3
Education: Degree(s)/Year/Specialization:
B.S./ 1992 / Civil Engineering
Active Registration: Year first registered/discipline
2001/Civil Engineer – MS #14911
Other experience and qualifications relevant to the proposed Project:
<p>Mr. Korb serves as Senior Civil Designer and Sr. Project Manager for EJES. His areas of expertise and experience include management and design for municipal infrastructure projects exceeding \$35 million in value. His projects have included storm water pumping stations, sanitary sewer design and rehabilitation, roadway and drainage, wastewater lift stations, airport layout and paving projects. He has over 25 years of professional engineering, project management and experience in all aspects of municipal engineering delivering them on time within budget.</p> <p>RELEVANT EXPERIENCE</p> <p>MEADOWBROOK ROAD REHABILITATION PROJECT JACKSON, MS Deputy Project Manager. The LPA project for the City of Jackson included the overseeing the development of construction plans, specifications, and cost estimate and CE&I for the rehabilitation of 1.2 miles of existing rural roadway in Jackson, MS. The roadway improvements consist of 2-in asphalt milling and overlay, thermoplastic traffic and edge markings, pedestrian striping, raised reflectors, rumble strip, new curb and gutter and sidewalk sections, and new ADA compliant handicap ramps, bike and pedestrian lane. The purpose of the project was to improve level of service, accessibility, drainage and safety. This project required coordination with the MDOT, residents in the community and the City of Jackson.</p> <p>N. STATE STREET REHABILITATION PROJECT JACKSON, MS Deputy Project Manager. The LPA project for the City of Jackson included the development of construction plans, specifications, cost estimate and CE&I for the rehabilitation of 1.3 miles of existing rural roadway in Jackson, MS. The roadway improvements consist of 2-in asphalt milling and overlay, thermoplastic traffic and edge markings, pedestrian striping, raised reflectors, rumble strip, new curb and gutter and sidewalk sections, and new ADA compliant handicap ramps. The purpose of the project was to improve level of service, accessibility, drainage and safety.</p> <p>EAST CLEVELAND STORMWATER PUMPING STATION CITY OF CLEVELAND, MS Project Engineer. This project consisted of the design and installation of two - 80 hp submersible stormwater pumps, controls, concrete structure, bar screen, paved ditch utility relocation and site improvements. Project included the grant writing, application through FEMA and CDBG, design and CE & I. Responsibilities for managing include preparation of plans and contract documents, detail cost estimate, and obtaining public agency approvals. Responsibilities also include providing bid phase services and construction phase services, including the opening and tabulation of bids and submittal review.</p> <p>SE CLEVELAND STORMWATER PUMPING STATION CITY OF CLEVELAND, MS Project Engineer. This project consisted of the design and installation of two - 60 hp submersible stormwater pumps, controls, concrete structure, bar screen, paved ditch and site improvements. Project included the grant writing, application, design and CE & I. Responsibilities for managing include preparation of plans and contract documents, detail cost estimate, and obtaining public agency approvals. Responsibilities also include providing bid phase services and construction phase services, including the opening and tabulation of bids and submittal review.</p>

TEC Professional Services Questionnaire

KEY PERSON, SPECIALIST, OR INDIVIDUAL CONSULTANT:
Name & Title:
Kamal Rasheed, PE Senior Civil Engineer
Project Assignment
Project Principal
Name of Firm with which associated:
EJES, Inc.
Years' experience with this Firm:
4
Education: Degree(s)/Year/Specialization:
B.S./ 1997 / Civil Engineering
Active Registration: Year first registered/discipline
2014/Civil Engineer – LA #38825 2003/Civil Engineer – TX #91125
Other experience and qualifications relevant to the proposed Project:
<p>Kamal Rasheed, PE currently serves as VP and Gulf Regional Manager for EJES. He has over 23 years of experience in Civil Engineering and Project Management. His areas of expertise and experience also include management and design for municipal infrastructure projects and private development for projects exceeding \$15 million in value. His projects have included storm water pumping stations, wastewater lift stations, roadways, large municipal watershed design, drainage ditches (upwards of 30 miles), residential subdivisions (upwards of 100 acres), and commercial site developments (upwards of 250 acres). Previously, while at URS he was certified and trained as a URS Project Manager, a certification recognized by the Project Management Institute.</p> <p>RELEVANT EXPERIENCE</p> <p>LOCAL DRAINAGE PROJECT NEGOTIATED DESIGN WORK ORDERS, CITY OF HOUSTON, PWE DEPARTMENT HOUSTON, TX Project Manager, this project is part of the City of Houston's Capital Improvement Plan (CIP) and is required to provide professional engineering services to address local storm water drainage system improvements and repairs citywide. The City of Houston residents and City employees often contact the City of Houston Public Works and Engineering Department regarding flooding and other drainage infrastructure problems throughout the City. The City of Houston checks on the requests and complaints and then nominates various small projects for further design and review based on their review. Hatch is then called to perform engineering preliminary investigations, hydrologic modeling, detailed design, and construction administration for many of these locations.</p> <p>PHASE II - LOCAL DRAINAGE PROJECT NEGOTIATED DESIGN WORK ORDERS, CITY OF HOUSTON, PWE DEPARTMENT, HOUSTON, TX Project Principal. On-call services for engineering preliminary investigations, hydrologic modeling, detailed design, and construction administration for various locations. Also, this project includes staff augmentation for the City of Houston.</p> <p>HARRIS COUNTY FLOOD CONTROL DISTRICT (PROJECT ID Z100-00-00-X281) HARRIS COUNTY, TX Project Principal for the design of the rehabilitation of drainage channel.</p> <p>DILLARD UNIVERSITY HAZARD MITIGATION GRANT PROGRAM, DILLARD UNIVERSITY NEW ORLEANS, LA Project Manager for the installation and implementation of drainage improvements on the campus of Dillard University. This FEMA-funded project involved improvements to grey infrastructure (subsurface storage, increased pipe capacity and enhanced pipe connectivity) and the installation of green infrastructure measures (porous pavement and grassed swales). The drainage improvements will protect the University by reducing damages (and loss of services) due to flooding. The improvements also provide relief to the drainage systems of the neighborhoods adjacent to the campus.</p> <p>STORM WATER PUMPING STATIONS, CITY OF HOUSTON, PWE DEPARTMENT HOUSTON, TX Project Manager and Engineer of Record. This project included design for rehabilitation of stormwater pumping stations and flood warning systems which included preliminary research, the preparation of Phase II - Final Design and Construction Documents, and Phase III - Construction Phase Services. This included multiple contracts totaling \$1,400,000 in engineering fees.</p> <p>JOINT BOOSTER PUMP STATION NO. 1 (JB2), TARRANT REGIONAL WATER DISTRICT, TARRANT COUNTY, TX Project Engineer, Final design services through 60% design for Joint Booster Pump Station No. 1 (JB2) - 240 acre site. Developed pump station site layout, grading and drainage, roadways, paving plans, yard piping, sanitary sewer, potable/non-potable water, and security/fencing.</p>

TEC Professional Services Questionnaire

KEY PERSON, SPECIALIST, OR INDIVIDUAL CONSULTANT:
Name & Title:
Boney Yim, PE – Senior Civil Engineer
Project Assignment
QA/QC
Name of Firm with which associated:
EJES, Inc.
Years' experience with this Firm:
15
Education: Degree(s)/Year/Specialization:
B.S./ 1995 / Civil Engineering
Active Registration: Year first registered/discipline
2003/Civil Engineer – TX #92075
Other experience and qualifications relevant to the proposed Project:
<p>Mr. Yim has over 25 years design of experience in roadway, bridges, hydrology and hydraulics, design reporting, traffic control, agency coordination and transportation planning. He has been responsible for roadway design development from initial concept to final design, producing biddable plans, estimate, and specifications. His experience also includes over 8 years of engineering experience as an employee of the Texas Department of Transportation (TxDOT), Dallas District. He is also experienced in engineering design and analysis software including OpenRoads, AutoCAD, Civil 3D, MicroStation, GEOPAK, WINSTORM, THYSYS, and HEC-RAS. Mr. Yim has managed and led the design for over 25 roadway new and reconstruction projects. As Project Manager/Project Engineer, his roles and responsibilities on the reference projects below include setting design criteria; controlling project costs; maintaining schedules; coordinating with clients and subconsultants; managing design staff; ensuring QC compliance; and miscellaneous technical design tasks.</p> <p>RELEVANT EXPERIENCE</p> <p>SOUTH KENNER ROAD JEFFERSON PARISH, LA QA/QC for design service for the rehabilitation of a subsurface drainage and sidewalk improvement project. The existing roadway is approximately 22' wide and has steep ditches immediately adjacent to the pavement which creates an unsafe condition. The new section will be 26' wide 2-11' lanes, with 2' shoulders; surface drainage and 4' sidewalks on both sides. Drainage system will include local swales to collect the stormwater runoff into drop inlets, generally spaced at 200'.</p> <p>WESTWOOD DR. RECONSTRUCTION JEFFERSON PARISH, LA QA/QC for preparation of plans, specifications, and estimates for the northbound lanes of Westwood Drive from Westbank Expressway to Lapalco Boulevard in Jefferson Parish. Responsible for the preparation of the General Notes/Summary of Quantities, Survey Reference Points and Layout, Existing Drainage Map, Proposed Drainage Map, Sequence of Construction, Opinion of Probably Cost, and Specifications.</p> <p>NORTH MANHATTAN BLVD ROADWAY WIDENING BETWEEN GRETNAL BLVD AND 9TH STREET HARVEY, LA QA/QC for design services for the widening on Northbound Manhattan Blvd. from Gretna Boulevard to 9th Street. The approx. length of the improvements are .64 miles. EJES is providing professional services (design and construction administration) for the design and installation of widening of northbound lane of Manhattan Blvd. at Lapalco Blvd. The roadway improvements consisted of full depth widening and overlay of Asphalt Pavement, removing and replacing of curbs & gutters, sidewalks, driveway apron, ADA complaint handicap ramps, bus stop access, lane and edge markings, pedestrian striping, new drainage and catch basin, signal modifications.</p> <p>SPLIT TRAIL ROADWAY AND DRAINAGE IMPROVEMENTS PLANO, TX QA/QC. Provided PS&E for Split Trail Road from Spring Creek Parkway and Avenue K. Design included improving the of 2-lane concrete roadway with integral curb-and-gutter. Project elements include roadway and drainage design, striping & signage, sidewalks, water line improvements, construction sequencing, and erosion control. Split Trail Road crosses over Brown Branch, located in a FEMA flood Zone AE with a floodway. This location has a history of localized flooding, including measurable impacts at an adjacent trailer park. As part of the CLOMR/LOMR efforts, EJES is performing a detailed hydraulic study, which includes converting the existing FEMA effective HEC-2 models into HEC-RAS for FEMA approval.</p>

TEC Professional Services Questionnaire

KEY PERSON, SPECIALIST, OR INDIVIDUAL CONSULTANT:

Name & Title:

Monica Malone, PE, CFM – Senior Civil Engineer

Project Assignment

Senior Drainage Engineer

Name of Firm with which associated:

EJES, Inc.

Years' experience with this Firm:

9

Education: Degree(s)/Year/Specialization:

B.S./1998 / Civil Engineering

Active Registration: Year first registered/discipline

2003/Civil Engineer – TX #91890 | CFM #0886-05N

Other experience and qualifications relevant to the proposed Project:

Mrs. Malone has 20 years of project management and design experience in hydrology and hydraulics (H&H), drainage systems, and floodplain management. She has managed and designed drainage projects, facilitated and reviewed H&H studies, performed FEMA review and coordination, and designed channels for stream stabilization. Monica's project management background includes project coordination, financial tracking, scope and fee preparation, and resource projections. The design projects that Monica has been involved include plans, specifications, estimate (PS&E), drainage reports, stream modeling, schematic preparation, and flood studies. Monica is experienced in the use of HEC-RAS, FlowMaster, MicroStation, Geopak, Geopak Drainage, Axiom, WinStorm, HY-8, HEC-HMS, THYSYS, and ArcGIS.

RELEVANT EXPERIENCE

BELKNAP ROAD FROM WEST BELFORT ROAD TO HARRIS COUNTY LINE | FORT BEND COUNTY, TX | *Fort Bend County, TX* | *Drainage Engineer* for the reconstruction of approximately 4,450 LF of existing 2-lane asphalt to a 4-lane divided concrete boulevard with curb and gutter. Responsible for review and design for the required enclosed drainage system throughout the roadway.

SPLIT TRAIL ROADWAY AND DRAINAGE IMPROVEMENTS | PLANO, TX | *Deputy PM/Drainage Engineer*. Provided PS&E for Split Trail Road from Spring Creek Parkway and Avenue K. Design included improving the of 2-lane concrete roadway with integral curb-and-gutter. Project elements include roadway and drainage design, striping & signage, sidewalks, water line improvements, construction sequencing, and erosion control. Split Trail Road crosses over Brown Branch, located in a FEMA flood Zone AE with a floodway. This location has a history of localized flooding, including measurable impacts at an adjacent trailer park. As part of the CLOMR/LOMR efforts, EJES is performing a detailed hydraulic study, which includes converting the existing FEMA effective HEC-2 models into HEC-RAS for FEMA approval.

FM 2201, TXDOT FORT WORTH DISTRICT | *Palo Pinto County, TX* | *Drainage Project Manager* for design services for PS&E for the rehabilitation and widening of the 6.4-mile corridor FM 2201, a rural major collector roadway, from FM 4 to US 281, in Palo Pinto County, Texas. Drainage design efforts included H&H design and analysis for 18 culvert crossings at FM 2201, including arched, CMP, concrete box, and historical rock masonry culverts. The proposed FM 2201 crossings, including Worser Creek, are located in an unincorporated Special Flood Hazard Area with minimal flood hazard. Hydrologic discharges were determined using rational method and regression equation methodology, and time of concentration was estimated using the NRCS method. Hydraulic design included modeling the existing and proposed conditions using HY-8 to avoid any adverse impacts outside the existing right of way limits.

FM 2860, TXDOT DALLAS DISTRICT | *Kaufman County, TX* | *Design Engineer* providing support services for PS&E for the rehabilitation and widening of the 4.9-mile corridor FM 2860, a rural major collector roadway, from FM 1388 to US 175 in Kaufman County, Texas. Drainage design efforts included H&H design and analysis and a hydraulic report for the Prairie Branch, Big Cottonwood Creek, and Little Cottonwood Creek bridge class culvert crossing extensions at FM 2860. Design efforts included analyzing existing and proposed conditions to determine the relative impacts to the Prairie Branch flood elevations, convey design flows, and not create negative impacts for the 100-year event. NRCS peak discharges for Big and Little Cottonwood Creek crossings were found using HEC-HMS unit hydrographs, and estimating overall surface storage based on available SCS reservoir data, and comparing results. Hydraulic design for Prairie Branch included modeling existing, updated, corrected existing, and proposed conditions using HEC-RAS, as outlined in the TxDOT Dallas District Recommended Format for Drainage Reports. Design and analysis of Big and Little Cottonwood Creek bridge class culverts crossings along FM 2860 were conducted using HY-8. Efforts were coordinated with the local floodplain administrator in Kaufman County.

TEC Professional Services Questionnaire

KEY PERSON, SPECIALIST, OR INDIVIDUAL CONSULTANT:
Name & Title:
Shirley D. Wilson, EI – Civil Designer
Project Assignment
Senior Civil Designer
Name of Firm with which associated:
EJES, Inc.
Years' experience with this Firm:
13
Education: Degree(s)/Year/Specialization:
B.S./ 2003/ Civil Engineering Undergraduate/1992/ Civil Engineering
Active Registration: Year first registered/discipline
2005/Engineer-in-Training – LA #27786
Other experience and qualifications relevant to the proposed Project:
<p>Ms. Wilson has 15 years of experience in multidisciplinary Civil Engineering work. Her experience includes project management, design, drafting, research, construction management and value engineering. She has experience in roadway design, subsurface infrastructure and street rehabilitation projects. She also assisted in the design of wastewater treatment plant projects, water plant improvements, waterline replacement and storage tanks, and the evaluation of storm and sanitary sewer lines for rehabilitation. Ms Wilson experience also includes being responsible for updating the Galveston Island Water Distribution System Model and assisting in preparing a Master Plan report with recommendations for improvements to the city of Galveston.</p> <p>RELEVANT EXPERIENCE</p> <p>READ BLVD IMPROVEMENTS NEW ORLEANS, LA Civil Designer. Ms. Wilson provided design services for the rehabilitation of Coronado Drive and Hauck Drive between Chef Menteur Hwy. and Dead End, Chef Menteur Hwy between Cardenas and Coronado, and Prentiss Drive between Schindler and Hauck. Tasks included development of projects plans, specs, and opinion of probable costs as well as providing construction engineering and inspection services</p> <p>SOUTH KENNER ROAD JEFFERSON PARISH, LA Civil Designer providing design services for the rehabilitation of a subsurface drainage and sidewalk improvement project. The existing roadway is approximately 22' wide, and has steep ditches immediately adjacent to the pavement which creates an unsafe condition. The new section will be 26' wide, 2-11' lanes, with 2' shoulders; subsurface drainage and 4' sidewalks on both sides. Drainage system will include local swales to collect the stormwater runoff into drop inlets, generally spaced at 200'.</p> <p>DESOTO PARISH ROADS REHABILITATION MANSFIELD, LA Civil Designer provided professional engineering services for the rehabilitation of the existing roadway, including milling/pulverization of existing road, base treatment, base widening, asphaltic concrete overlay, along the installation of signs/pavement markings, spot replacement of damaged drainage structures, grading of existing ditches and application of hydro seeding. Ms. Wilson had a major role in the hydraulic design analysis and the traffic signage.</p> <p>900 BLOCK OF TRAVIS SHREVEPORT, LA Civil Designer provided initial subsurface drainage layout for an existing 72" reinforced concrete drainage pipe and proposed drainage structures. This site design project also involves converting an open ditch drainage area into a subsurface drainage system containing catch basins, storm drain pipes, and junction boxes.</p> <p>HAMILTON ROAD BOSSIER CITY, LA Civil Designer for a local urban system project where services provided included a completed EA in accordance with the National Environmental Policy Act (NEPA), widening the existing two-lane roadway to 4 or 5-lanes with subsurface drainage, widening the existing underpass of KCS railroad, designing and overpass of Union Pacific Railroad and a line and grade analysis. The Hamilton Road corridor is approximately 2-miles of existing roadway and approximately 0.25 miles of proposed new alignment. The project included a public meeting and a public hearing to discuss details of the EA, which resulted in a Finding of No Significant Impact (FONSI) from FHWA. Ms. Wilson has a major role in the roadway design and the subsurface infrastructure.</p> <p>BELLEVUE ROAD BOSSIER PARISH, LA Civil Designer provided professional engineering design services for the widening of Bellevue Road in Bossier Parish, LA. Ms. Wilson regularly coordinated with and met with Bossier Parish engineers to establish design parameters for the project and to assure that every milestone was reached on schedule. Ms. Wilson played a major role in the roadway design, subsurface drainage and value engineering.</p>

TEC Professional Services Questionnaire

KEY PERSON, SPECIALIST, OR INDIVIDUAL CONSULTANT:
Name & Title:
Nicholas LaValla - Civil Designer
Project Assignment
Civil Designer
Name of Firm with which associated:
EJES, Inc.
Years' experience with this Firm:
1
Education: Degree(s)/Year/Specialization:
B.S./ 2020/ Civil Engineering
Active Registration: Year first registered/discipline
2021/Engineer-in-Training – LA #34919
Other experience and qualifications relevant to the proposed Project:
<p>Mr. LaValla is a registered Engineering Intern with experience in performing task in all phases of civil design and construction administration. His experience includes permitting, startup, site design, stormwater, grading, AutoCad, environmental, utility layouts, and other areas.</p> <p>RELEVANT EXPERIENCE</p> <p>MANHATTAN BLVD. SOUTHBOUND RIGHT-TURN LANE JEFFERSON PARISH, LA <i>Civil Designer/Construction Administration</i> for the design and installation of new right-turn lane on southbound lane of Manhattan Blvd. at Lapalco Blvd. The roadway improvements consisted of full depth or 2-in cold milling and overlay of Asphalt Pavement, removing and replacing of curbs & gutters, sidewalks, driveway apron, ADA complaint handicap ramps, edge markings, pedestrian striping, relocation of existing 4-inch gas line as well as new drainage Line and catch basin.</p> <p>AMES BLVD REHABILITATION (LAPALCO BLVD. TO HAPPY ST.) JEFFERSON PARISH, LA <i>Civil Designer/Construction Administration</i> for design services for project that includes the development of construction plans, specifications, and cost estimate for the rehab of concrete panels and curbs along Ames Blvd. The roadway improvement consists of concrete panel replacement, curb replacement, roadway patching, replacement of loop detectors.</p> <p>SOUTHERN UNIVERSITY - PINCHBACK PARKING AREA AND DRAINAGE SYSTEM IMPROVEMENTS BATON ROUGE, LA <i>Civil Designer/Construction Administration</i> for design and construction services proposed for this project are for construction of a new full depth asphalt pavement parking lot. The project consists of clean existing catch basins, clean existing storm drain pipe, new curb, new sidewalk section(s), ADA handicap ramps (as required), and overhead parking area lighting. The new storm drain catch basins and drain lines that are additional to the existing storm drainage system will be engineered to accommodate a 10-year, 24-hour storm event.</p> <p>JEFFERSON PARISH - GULIZO CANAL DRAINAGE IMPROVEMENTS JEFFERSON PARISH, LA <i>Civil Designer/Construction Administration</i> for design services for project that includes the installation of approximately 1250 ft. of 96" RCPA along Gaiuse Street between Belle Terre Road and Lapalco Blvd. including catch basins, outfall, street replacement (as necessary), mill and overlay of roadway, relocations of any utilities that interfere with the construction, and all other incidentals.</p> <p>SOUTHERN UNIVERSITY - MINIDOME PARKING DRAINAGE IMPROVEMENTS BATON ROUGE, LA <i>Civil Designer/Construction Administration</i> for engineering design and construction services proposed for this project generally consist of the following construction activities: Cleaning/ jetting of existing catch basins and pipes to local outfall (Kingfisher Ave. box culvert) for Minidome parking lot. For Minidome perimeter road(s); Provide positive surface water drainage, capture and conveyance; Asphalt pavement resurfacing (mill and overlay) with 15% of surface area considered for full depth reconstruction; Football stadium access road (from Swan Ave.) asphalt pavement resurfacing (mill and overlay) with 15% of surface area considered for full depth reconstruction; Minidome/ Football Stadium connection road asphalt pavement resurfacing (mill and overlay) with 15% of surface area considered for full depth reconstruction; Open-channel ditch improvements; Open-channel concrete lined ditch cleaning; Interior green space area grading and drainage improvements; Green space area grading and drainage improvements for multiple locations. The project also required a new storm drain catch basins and drain lines that are additional to the existing storm drainage system will be engineered to accommodate a 10-year, 24-hour storm event.</p>

TEC Professional Services Questionnaire

L. Work by Firm or Joint-Venture members which best illustrates current qualifications relevant to this Project. Please include any and all work performed for Jefferson Parish. Please attach additional pages if necessary.

PROJECT NO. 1

Project Name, Location and Owner's contact	Nature of Firm's Responsibility:	
GULIZO CANAL DRAINAGE IMPROVEMENTS <small>PROJECT OWNER</small> Jefferson Parish <small>POINT OF CONTACT NAME</small> John O'Connor, PE <small>POINT OF CONTACT TELEPHONE NUMBER</small> (504) 736.6833	<u>DRAINAGE IMPROVEMENTS (BELLE TERRE ROAD TO LAPALCO BLVD.)</u> EJES provided engineering services for the design for the installation of approximately 1250 ft. of 96" RCPA along Gaiuse Street between Belle Terre Road and Lapalco Blvd. including catch basins, outfall, street replacement (as necessary), mill and overlay of roadway, relocations of any utilities that interfere with the construction, and all other incidentals.	
Completion Date (Actual or estimated)	Estimated Cost:	
	Entire Project:	Work for which Firm was Responsible
2022 (E)	\$1.9 M	\$129K

PROJECT NO. 2

Project Name, Location and Owner's contact	Nature of Firm's Responsibility:	
SOUTHERN UNIVERSITY – PINCHBACK PARKING AREA DRAINAGE SYSTEM IMPROVEMENTS <small>PROJECT OWNER</small> Southern University-Baton Rouge <small>POINT OF CONTACT NAME</small> Kestee Weir <small>POINT OF CONTACT TELEPHONE NUMBER</small> (225) 771-6235	EJES was contracted by Southern University Agricultural and Mechanical College to provide engineering design and construction services of a Pinchback parking lot and existing drainage system cleaning. Proposed for this project is construction of a new full depth asphalt pavement parking lot. The project consists of: clean existing catch basins, clean existing storm drainpipe, new curb, new sidewalk section(s), ADA handicap ramps (as required), and overhead parking area lighting. The new storm drain catch basins and drain lines that are additional to the existing storm drainage system will be engineered to accommodate a 10-year, 24-hour storm event. EJES determined from field reconnaissance the general lay of the land, including locations of existing utilities and driveways, right-of-way, access, drainage crossings, landscaped areas, and private property improvements.	
Completion Date (Actual or estimated)	Estimated Cost:	
	Entire Project:	Work for which Firm was Responsible
2022 (A)	\$521,220	\$50,000



TEC Professional Services Questionnaire

PROJECT NO. 3		
Project Name, Location and Owner's contact	Nature of Firm's Responsibility:	
<p>SOUTHERN UNIVERSITY MINIDOME PARKING DRAINAGE IMPROVEMENTS</p> <p style="text-align: center;"><small>PROJECT OWNER</small></p> <p>Southern University – Baton Rouge</p> <p style="text-align: center;"><small>POINT OF CONTACT NAME</small></p> <p>Maurice Pitts, Executive Director of Facility Services</p> <p style="text-align: center;"><small>POINT OF CONTACT TELEPHONE NUMBER</small></p> <p>(225) 771-2488</p>	<p>EJES was contracted by Southern University Agricultural and Mechanical College to provide engineering design and construction services providing Minidome parking drainage improvements. Proposed for this project are construction of the Minidome parking lot: Cleaning/ jetting of existing catch basins and pipes to local outfall (Kingfisher Ave. box culvert); Minidome perimeter road(s): Providing positive surface water drainage, capture and conveyance. Asphalt pavement resurfacing (mill and overlay) with 15% of surface area considered for full depth reconstruction. Football stadium access road (from Swan Ave.) asphalt pavement resurfacing (mill and overlay) with 15% of surface area considered for full depth reconstruction. As well as Minidome/ Football Stadium connection road asphalt pavement resurfacing (mill and overlay) with 15% of surface area considered for full depth reconstruction; Open-channel ditch improvements along Harding Blvd. south of SU's Men's Baseball stadium; Open-channel concrete lined ditch cleaning along RR/ Kingfisher Ave from Harding Blvd. to Swan Ave.; Interior green space area grading and drainage improvements (where the agricultural fair used to be held); Green space area grading and drainage improvements by the woman's softball field adjacent to Swan Ave.; Green space area grading and drainage improvements between Livestock Road and Isabel Herson St.; as well as between Isabel Herson St. and football stadium access road; as well as between football stadium connection road and new sidewalk/ stadium main entrance. The new storm drain catch basins and drain lines that are additional to the existing storm drainage system will be engineered to accommodate a 10-year, 24-hour storm event. EJES determined from field reconnaissance the general lay of the land, including locations of existing utilities and driveways, right-of-way, access, drainage crossings, landscaped areas, and private property improvements.</p>	
Completion Date (Actual or estimated)	Estimated Cost:	
	Entire Project:	Work for which Firm was Responsible
2022(A)	\$499,889	\$45,444



PROJECT NO. 4		
Project Name, Location and Owner's contact information:	Description of Services Provided:	
<p>OCKLEY DITCH IMPROVEMENTS</p> <p style="text-align: center;"><small>PROJECT OWNER</small></p> <p>City of Shreveport</p> <p style="text-align: center;"><small>POINT OF CONTACT NAME</small></p> <p>Ali Mustapha, PE</p> <p style="text-align: center;"><small>POINT OF CONTACT TELEPHONE NUMBER</small></p> <p>(318) 673-6000</p>	<p><u>PROVIDE PS&E FOR 1200 LF IMPROVEMENTS</u></p> <p>EJES provided Hydrology/Hydraulic Analysis, Drainage, Storm Sewer Design, Utilities</p>	
Completion Date (Actual or estimated)	Estimated Cost:	
	Entire Project:	Work for which Firm was Responsible
2013 (A)	\$1.7M	\$155K

TEC Professional Services Questionnaire

PROJECT NO. 5		
Project Name, Location and Owner's contact	Description of Services Provided:	
SPLIT TRAIL ROADWAY AND DRAINAGE IMPROVEMENTS <small>PROJECT OWNER</small> City of Plano, TX <small>POINT OF CONTACT NAME</small> James Carswell, PE Project Manager <small>POINT OF CONTACT TELEPHONE NUMBER</small> (972) 841.7152	EJES provide PS&E and H&H analysis and design for 2100' of storm sewer & 2-6'x4' RCB for Split Trail Road from Spring Creek Parkway and Avenue K. Design included improving the of 2-lane concrete roadway with integral curb-and-gutter. Project elements include roadway and drainage design, striping & signage, sidewalks, water line improvements, construction sequencing, and erosion control. Split Trail Road crosses over Brown Branch, located in a FEMA flood Zone AE with a floodway. This location has a history of localized flooding, including measurable impacts at an adjacent trailer park. As part of the CLOMR/LOMR efforts, EJES is performing a detailed hydraulic study, which includes converting the existing FEMA effective HEC-2 models into HEC-RAS for FEMA approval.	
Completion Date (Actual or estimated)	Estimated Cost:	
	Entire Project:	Work for which Firm was Responsible
2015 (A)	\$2.0 M	\$378K

PROJECT NO. 6		
Project Name, Location and Owner's contact information:	Description of Services Provided:	
HUDSON BLVD DRAINAGE IMPROVEMENTS <small>PROJECT OWNER</small> City of Alexandria <small>POINT OF CONTACT NAME</small> Eric Duck, PE Assistant City Engineer <small>POINT OF CONTACT TELEPHONE NUMBER</small> (318) 473-1172	EJES, Incorporated provided engineering design services for subsurface drainage system to convey runoff from Lincoln Road towards Chatlin Lake Canal. All other appenditures required to collect storm runoff shall be included in the design. A 10-year storm was incorporated into the design. The design includes two trunks lines on both sides of Hudson Boulevard with equalizers as required to allow maximum flow through the system.	
Completion Date (Actual or estimated)	Estimated Cost:	
	Entire Project:	Work for which Firm was Responsible
2010	\$1.2M	\$87k

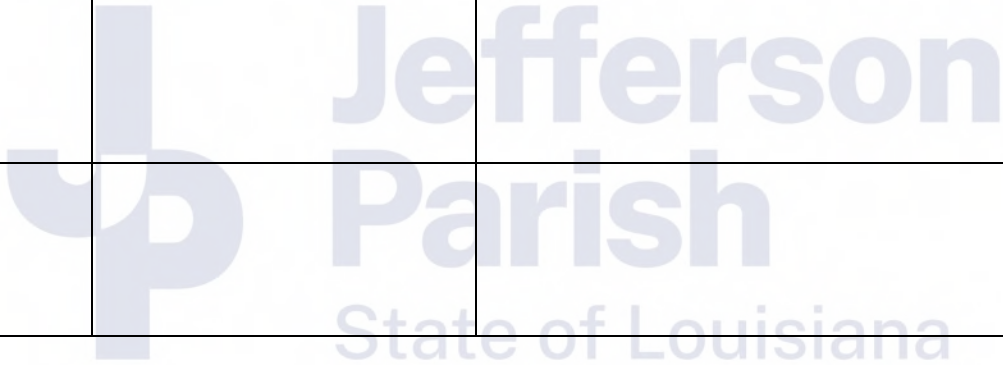
TEC Professional Services Questionnaire

PROJECT NO. 7						
Project Name, Location and Owner's contact	Description of Services Provided:					
<p style="text-align: center;">WESTWOOD DRIVE DRAINAGE IMPROVEMENT MARRERO, LA</p> <p style="text-align: center;">PROJECT OWNER JEFFERSON PARISH, LA POINT OF CONTACT NAME Jack Lo Phoenix Global Engineering and Construction POINT OF CONTACT PHONE NUMBER (504) 883-9021</p>	<p>EJES assisted with the preparation of plans, specifications, and estimates for the northbound lanes of Westwood Drive from Westbank Expressway to Lapalco Boulevard in Jefferson Parish. The existing typical section consists of a four-lane road with grassed median. The project consists of removal and replacement of the existing concrete pavement and drainage structures as necessary to improve drainage capacity. EJES is responsible for the preparation of the General Notes/Summary of Quantities, Survey Reference Points and Layout, Existing Drainage Map, Proposed Drainage Map, Sequence of Construction, Opinion of Probably Cost, and Specifications.</p> <div style="display: flex; justify-content: space-around; align-items: center;">   </div>					
<p style="text-align: center;">Completion Date (Actual or estimated)</p>	<p style="text-align: center;">Estimated Cost:</p> <table border="1" style="width: 100%; border-collapse: collapse;"> <thead> <tr> <th style="width: 50%; padding: 5px; text-align: center;">Entire Project:</th> <th style="width: 50%; padding: 5px; text-align: center;">Work for which Firm was Responsible</th> </tr> </thead> <tbody> <tr> <td style="text-align: center; padding: 5px;">\$2.1M</td> <td style="text-align: center; padding: 5px;">\$397,517</td> </tr> </tbody> </table>		Entire Project:	Work for which Firm was Responsible	\$2.1M	\$397,517
Entire Project:	Work for which Firm was Responsible					
\$2.1M	\$397,517					
April 20, 2015						

TEC Professional Services Questionnaire

M. List all prior and/or on-going litigation between Firm and Jefferson Parish. Please attach additional pages if necessary.

Parties:		Status/Result of Case:
Plaintiff:	Defendant:	
1. NONE		
2.		
3.		
4.		



TEC Professional Services Questionnaire

N. Use this space to provide any additional information or description of resources supporting Firm's qualifications for the proposed project.

SPECIALIZED EXPERIENCE AND TECHNICAL COMPETENCE



EJES, Inc. (Founded in 1997) is a professional **ARCHITECT & CIVIL ENGINEERING DESIGN AND CONSULTING** firm that provides architect and engineering expertise and experience to both public and private sector clients in the states of Louisiana, Texas, and Oklahoma. EJES, Inc. is a small minority-owned firm certified by the Small Business Administration (SBA), Louisiana Department of Transportation and Development (LaDOTD) and New Orleans International Airport.

Principal and President, Edwin Jones, PE is a Southern University-Baton Rouge Graduate from the College of Engineering in 1990.

With a **"Committed to Providing Service with Excellence"** philosophy, EJES has built an unparalleled reputation for delivering superior architectural and engineering services and is referred to as one of the most respected design firms in Louisiana and Dallas.

EJES has a diverse portfolio, in-house multi-discipline professionals, and an integrated project delivery process that ensures that each project can be efficiently bid and constructed. With a "total quality control system". EJES' in-house services allow the firm to manage each project from *the early planning stages to completion*, and in accordance with the customer's requirements. The firm employs staff with experience and expertise that is highly diverse and covers a broad spectrum of architecture and engineering design disciplines to enhance customer service and address the specialized needs of each client.

Our Corporate Office is in Dallas, Texas and **we have two Louisiana offices located in New Orleans and Shreveport**. Combined we currently staff more than 70 professionals, providing architecture and civil engineering and construction management services in various states.

EJES, Incorporated provides engineering design services tailored to meet the specific requirements of each individual project. Our staff experience is highly diverse, covering a broad spectrum of engineering design disciplines. Years of field experience of EJES' design are incorporated into every design, resulting in projects which can be efficiently bid and constructed.

EJES, Incorporated has proven experience performing these services for Parishes and other municipalities. **EJES has maintained offices in Louisiana since 1997**. We offer Jefferson Parish a group of professionals that will deliver a successful, cost efficient project that will meet budget and schedule requirements set forth by our clients.

Knowing how to create and sustain project momentum by working effectively as an extension of the client is a unique value that EJES will contribute to the management of the project. We know that on-time delivery of a quality product will be a vital element in satisfying expectations of the Clients and all interested parties.

Clearly, the first step in meeting schedule deadlines is the firm's ability to develop, implement and utilize effective schedules. EJES project management and support team pay attention to this by applying its experience to the detailed steps outlined in the scheduling and the resultant impact on task execution. This experience is particularly useful in managing multiple activities involving different parties such as the Clients, local utility owners, state and federal agencies. EJES uses Microsoft Project software to assist with schedule maintenance and budget monitoring.

EJES project schedules include consideration of processing activities such as:

- Document development, review, editing and printing with input from multiple team members
- Allocation of internal team QA/QC review time prior to Client submittal due date
- Allocation of sufficient time for Client to review submittals and project related information
- Allocation of sufficient time for outside sources to review project related material
- Periods for reviewing, discussing and addressing comments/concerns regarding intricate issues
- Periods for coordinating, researching and interacting with other authorities with interests in the project

TEC Professional Services Questionnaire

1) PROFESSIONAL TRAINING AND EXPERIENCE IN RELATION TO THE TYPE OF WORK REQUIRED FOR THE ROUTINE ENGINEERING SERVICES

Professional Qualifications for EJES INCORPORATED				
Role	Name	Education	Registration	Total Yrs
Principal-in-Charge	Edwin B. Jones	BS/Civil Engineering MBA/Operations Management	PE	28
Project Principal	Kamal Rasheed	BS/Civil Engineering	PE	25
Project Manager	Tanita Gilbert-Baker	BS/Civil Engineering Executive MBA	PE	25
Public Involvement	Reginald Crear	BS/Marketing		13
QA/QC Manager	Boney Yim	BS/Civil Engineering	PE	25
Civil Engineer	Gregory Korb	BS/Civil Engineering	PE	22
	Kamal Rasheed	BS/Civil Engineering	PE	25
	Monica Malone	BS/Civil Engineering	PE	20
	Aaron Hargrove	BS/Civil Engineering	PE	23
	Shirley Wilson	BS/Civil Engineering	EI	13
	Nicholas LaValla	BS/Civil Engineering	PE	1
	Merineh Getachew	BS/Civil Engineering		7
	Iman Abbasnia	BS/Civil Engineering		47
Civil Designer	Theandrea Thomas	BS/Civil Technology, Construction Management		33
CADD Support	Thomas Sifuentes	CADD Certification		18
	Adam Sumet	CADD Certification		10
Office Administration	Kinni Farve	BS, Marketing		4


2) SIZE OF FIRM: CONSIDERING NUMBER OF PROFESSIONAL AND SUPPORT PERSONNEL REQUIRED TO PERFORM TYPE OF ROUTINE ENGINEERING TASK

The **EJES TEAM** is comprised of a highly diverse group of professionals with experience covering a broad spectrum of engineering design, disciplines to perform services required for these projects. **EJES** currently has a staff of more than 70 professionals, providing civil engineering, architecture and construction management services to our clients. Our staff includes 17 licensed engineers, 9 engineering interns, 8 CADD technicians, 2 licensed Architects, 4 Intern Architects, and 15 administration assistants that will provide design and QA/QC services.

TEC Professional Services Questionnaire

STAFFING MATRIX

The matrix below illustrates the staffing that EJES INC has available for this project. **We are prepared to commit the required resources to the project immediately, and assure their continuing availability.**

		Project Manager	Quality Control/	Project Evaluation	Civil Design	Drafting of Technical Plans	Technical Specifications	Construction Administration	Traffic Control	Public Involvement	Cost Estimating
EJES INCORPORATED											
	Edwin B. Jones, PE, MBA Principal-in-Charge	◆	◆	◆	◆		◆			◆	◆
	Tanita Gilbert-Baker	◆	◆	◆	◆		◆			◆	◆
	Kamal Rasheed	◆	◆	◆	◆	◆	◆				
	Aaron Hargrove	◆	◆	◆	◆						
	Monica Malone	◆	◆	◆	◆						
	Boney Yim, PE	◆	◆	◆	◆						
	Gregory Korb, PE	◆		◆	◆		◆				
	Nicholas LaValla				◆			◆		◆	
	Shirley Wilson, EI				◆	◆			◆		
	Theandrea Thomas					◆					
	Gary Hines					◆		◆			
	Reginald Crear									◆	
	Iman Abbasnia					◆					

3) CAPACITY FOR TIMELY COMPLETION OF NEWLY ASSIGNED WORK; CURRENT UNFINISHED WORKLOAD & AVAILABILITY

The **EJES** will commit the resources necessary for design of any segment of work assigned to for Jefferson Parish Drainage Projects. Our current workload will allow us to accommodate any project assigned. All staff members proposed for the project are available to begin work immediately upon award of project and notice to proceed.

Name	Duties/Responsibilities	Current /Unfinished Workload	Availability
Edwin B. Jones, PE, MBA	Principal-in-Charge	60%	40%
Tanita Gilbert-Baker, PE, MBA	Project Manager/Senior Civil Engineer	50%	50%
Kamal Rasheed, PE	Senior Drainage Engineer	60%	40%
Boney Yim, PE	Quality Assurance/Quality Control	50%	50%
Monica Malone, PE, CFM	Senior Drainage Engineer		
Gregory Korb, PE	Senior Civil Engineer	50%	50%
Nicholas LaValla	Senior Civil Engineer	50%	50%
Shirley Wilson, EI	Civil Engineering Design Support	40%	60%
Reginald Crear	Pubic Involvement	60%	40%
Iman Abbasnia	CADD	60%	40%
Merineh Getachew	CADD	55%	45%
Theandre Thomas	Design Support	40%	60%
Adam Sumet	Construction Administration	40%	60%

TEC Professional Services Questionnaire

CAPACITY TO PERFORM THE WORK WITHIN TIME LIMITATIONS AND WITHIN BUDGET

EJES has a hard-earned reputation within the State of Louisiana and with other clients for effective production of objective, high-quality projects and capability to adhere to strict project schedules. In most cases, the Project Team will be able to initiate work on the same day that verbal notification to proceed is received. Our team's demonstrated flexibility and responsiveness has led to repeat business on numerous occasions, particularly with regard to the State of Louisiana.

The Project Team can conduct several projects with accelerated schedules simultaneously, indicating our ability to respond to short time frames and quick turn-around project needs. Each task order review and final submittal will be within the schedules established by Jefferson Parish. Repeat business by key team members demonstrates our team commitment and capability to meet schedules and deadlines established by our Louisiana Clients.

EJES acknowledges that routine engineering services are for contracts where the total engineering fee, exclusive of resident inspection services, will not exceed \$500,000.00 per assignment.

4) PAST PERFORMANCE ON PARISH CONTRACTS

EJES was awarded a contract as Prime Consultant for design and construction of **Manhattan Blvd SB Right Turn, NB Manhattan Blvd Roadway Widening, Ames Blvd Rehabilitation, and South Kenner Road Rehabilitation (River Road to Chenevert Street)**. EJES also provided design services for **Gulizo Canal Drainage Improvements projects**. We provided services as subconsultant for Westwood Blvd, Harvey Wastewater Treatment Plant, and Marrero Wastewater Treatment Plant projects for Jefferson Parish. EJES has performed work for local entities that include the City of New Orleans, Orleans Parish, New Orleans International Airport, Sewerage and Water Board of New Orleans, and East Baton Rouge Parish.

5) LOCATION OF FIRM

EJES has a local presence at 2626 Canal Street, New Orleans, LA 70119.

6) ADVERSARIAL LEGAL PROCEEDINGS

EJES has no adversarial between the Parish. We are not aware of any conflict of interest or litigations between the Parish and our Firm.

7) PRIOR SUCCESSFUL COMPLETION OF PROJECTS OF TYPE AND NATURE OF ROUTINE ENGINEERING SERVICES

EJES has a proven track record as prime and sub-consultant with the State of Louisiana for successfully designing projects of this nature. EJES understands the importance of providing the most efficient and economical design. Our design practice will be in compliance with Jefferson Parish design criteria and standards. EJES understands the requirements of dealing with key issues such as drainage, landscaping, coordinating with various utility agencies and right-of-way issues associated with neighborhood street projects. EJES understands that coordination of some neighborhood streets may also include the Louisiana Department of Transportation and other agencies. We also understand the importance of providing safety to the traveling public. EJES will develop a traffic control plan for each assigned project to minimize the impact for local travelers and adjacent properties.

N. To the best of my knowledge, the foregoing is an accurate statement of facts.

Signature: Edwin B. Jones SR Print Name: Edwin B. Jones, Sr., PE, MBA
Title: Chief Executive Officer Date: March 25, 2022

TEC Professional Services Questionnaire



The Louisiana Professional Engineering and Land Surveying Board has the following information on file:

Name:	Public Address:
EJES, Incorporated	Mr. Edwin B. Jones 201 Wilkinson Street
	Shreveport, Louisiana 71104

License/Certificate Information w/ Supervision

License	Status	First Issuance Date	Expiration Date	Supervisor(s)
EF.0002603	Active	10/17/2000	03/31/2023	Mrs. Tanita Melann Gilbert-Baker # PE.0029350 - Active

Print Close

LOUISIANA PROFESSIONAL
ENGINEERING & LAND SURVEYING BOARD
(LAPELS)
9643 Brookline Avenue, Suite 121
Baton Rouge, LA 70809
Phone (225) 925-6291
www.lapels.com

Mr. Edwin Bernard Jones

License/Certificate Type - Number Expiration Date
PE.0027489 03/31/2022

Status: **Active**

LOUISIANA PROFESSIONAL
ENGINEERING & LAND SURVEYING BOARD
(LAPELS)
9643 Brookline Avenue, Suite 121
Baton Rouge, LA 70809
Phone (225) 925-6291
www.lapels.com

Mrs. Tanita Melann Gilbert-Baker

License/Certificate Type - Number Expiration Date
PE.0029350 03/31/2023

Status: **Active**

LOUISIANA PROFESSIONAL
ENGINEERING & LAND SURVEYING BOARD
(LAPELS)
9643 Brookline Avenue, Suite 121
Baton Rouge, LA 70809
Phone (225) 925-6291
www.lapels.com

Mr. Kamal Rasheed

License/Certificate Type - Number Expiration Date
PE.0038825 09/30/2022

Status: **Active**

LOUISIANA PROFESSIONAL
ENGINEERING & LAND SURVEYING BOARD
(LAPELS)
9643 Brookline Avenue, Suite 121
Baton Rouge, LA 70809
Phone (225) 925-6291
www.lapels.com

Ms. Shirley DeRose Wilson

License/Certificate Type - Number Expiration Date
EI.0027786 03/31/2022

Status: **Active**

LOUISIANA PROFESSIONAL
ENGINEERING & LAND SURVEYING BOARD
(LAPELS)
9643 Brookline Avenue, Suite 121
Baton Rouge, LA 70809
Phone (225) 925-6291
www.lapels.com

Mr. Nicholas Anthony LaValla

License/Certificate Type - Number Expiration Date
EI.0034919 03/31/2022

Status: **Active**

MISSISSIPPI

Board of Licensure for Professional Engineers and Surveyors

[Find Licensee](#)
[Contact Us](#)

Licensee Details

Name: Mr. Gregory Michael Korb

Address: 931 Bay Tree Drive
Flowood MS 39232

County: Rankin

Phone: 662-588-5706

Employer: EJES Inc.


License Type: Professional Engineer

License Number: 14911

Expires on: 12/31/2022

[<< Back to Search](#)
[Print](#)

TEC Professional Services Questionnaire


Texas Board of Professional
Engineers and Land Surveyors

Page:
1

Updated on:
3-21-2022

Matches:
1

ADEYEOLUWA, PAUL OLUWOLE
PE# 100114

Status	Branch(s)	Granted	Expires	Employer(s)	Address/Phone
Active	Civil	12-20-2007	09-30-2022	EJES INCORPORATED Walpark Associates Inc	2420 Saddlehorn Drive Mesquite TX 75181-2811 PH#: 214-343-1210

YIM, BONEY
PE# 92075

Status	Branch(s)	Granted	Expires	Employer(s)	Address/Phone
Active	Civil	06-13-2003	03-31-2023	EJES Inc	PO Box 740222 Dallas TX 75374-0222 PH#: 214-343-1210

HARGROVE, AARON BRYANT
PE# 93706

Status	Branch(s)	Granted	Expires	Employer(s)	Address/Phone
Active	Civil	06-02-2004	03-31-2022	EJES Inc	10803 White Oak Creek Ct. Cypress TX 77429 PH#: 281-272-1612

MALONE, MONICA RAQUEL
PE# 91890

Status	Branch(s)	Granted	Expires	Employer(s)	Address/Phone
Active	Civil	06-13-2003	03-31-2023	EJES, Inc.	12801 N Central Expy, Suite 700 Dallas TX 75243 PH#: 214-343-1210