



WORK SMART™

M2 106

VOCATIONAL MEDIUM DUTY





THE ALL-AROUND PERFORMER.

The Freightliner M2 106 is a versatile member of the Freightliner Trucks family, offering the perfect platform for a variety of applications. With a GVWR of up to 56,000 pounds, this medium-duty vehicle supports a wide range of bodies and chassis-mounted equipment. A multiplex wiring system, clear frame rails and a variety of exhaust packages help you get the configuration you need for the job at hand. And the optional SmartPlex™ Electrical System offers a seamless electrical interface with the body for easier custom programming.

The M2 106 is available as a truck or a tractor and comes standard with a powerful yet fuel efficient Cummins® ISB6.7 engine or an optional ISL9 engine with up to 350 hp. It offers the choice of manual, automatic or automated transmissions from Eaton® Fuller® and Allison®. And the optional Freightliner SmartShift® feature makes shifting easy with just a fingertip push or pull of a column-mounted hand lever.

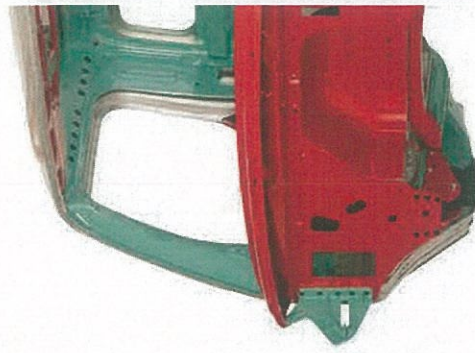
The stylish and functional design of the Freightliner M2 106 features a sloped, aerodynamic hood, a low-profile dash and a 2,500 square-inch windshield that gives drivers best-in-class visibility. The vehicle also provides up to a 55-degree wheel cut, set-back front axle and swept-back bumper for excellent maneuverability in tight situations.

Available cab configurations:

• 106" BRC Day Cab

WHERE TOUGHN EFFICIENCY.

We've applied sophisticated engineering. First, our cabs are lightweight, yet extremely reinforced with e-coated steel and tolerances with Henrob rivets and weldable impact tests. Plus, the chassis includes durable and safe cab that meets stringent impact tests. Plus, the chassis includes channel frame rails. The result is a ter RBM ratio up to 3.7 million inch-pou handle whatever job is thrown at it, da



Aluminum Structural Reinforcements

- Corrugated floor, roof and back-of-cab
- Meets Swedish A-pillar test and ECE R29
- SAE J2422 roof strength requirement
- Available in day cab, extended cab
- 2,500 square-inch one-piece windshield
- Wide door openings with low step-in
- Steel firewall for solid mounting of engine

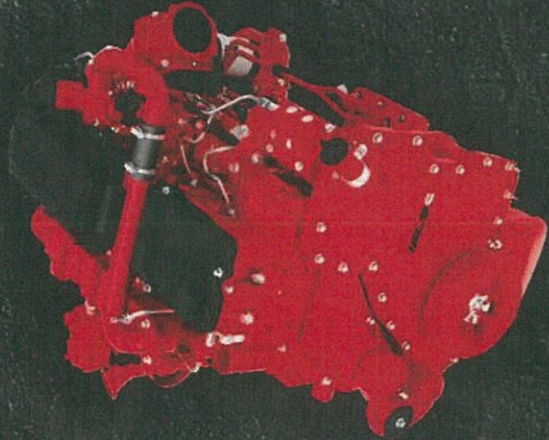


ENGINES	
Cummins ISB6.7*	•
200 - 325 hp / 520 - 750 lb-ft torque	
Cummins ISL9	•
260 - 350 hp / 720 - 1150 lb-ft torque	
TRANSMISSIONS	
Eaton Fuller Manual	•
Eaton Fuller Automated	•
Allison Automatic	•
AXLES (UP TO)	
Steer*	16k
AWD Steer	16k
Single Drive	30k
Tandem	46k

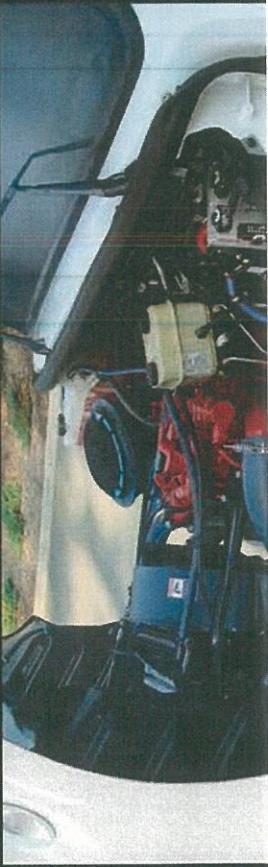
* Higher ratings are available for approved applications



Cummins®
ISB6.7 Engine



Cummins®
ISL9 Engine



- Easy headlight bulb access
- Halogen composite headlights for easy replacement



- Corrosion resistant reinforcement
- 2,500 sq ft of greater interior space
- Strong fiberglass body
- Optional heated windshield
- Cummins ISB engine standard, optional ISL engine
- Optional bright trim package

SPECIFICATIONS AND OPTIONS

STANDARD FEATURES

- 106" BBC steel-reinforced aluminum day cab
- Set-back front axle position @ 37.6"
- Strong, durable cab and hood
- Halogen composite headlights
- Rubber cab mounts
- 63" x 14" rear window
- Up to 55-degree wheel cut, depending on wheel equipment
- Cummins® ISB engine with 200 HP, 520 lb-ft torque available with up to 16,000 lbs. front and 46,000 lbs. rear axles
- Rear cab cross member flush with back of cab to allow for outriggers
- Supports a wide range of bodies and chassis-mounted equipment

OPTIONAL FEATURES

- Emergency service application HP ratings available
- Large selection of wheelbases with frames and frame reinforcements
- Air cab mounts
- Freightliner AirLiner® rear suspension
- Full inner-frame reinforcement
- Door-mounted down-view mirrors and a passenger door lower window enhances driver vision around truck and surroundings
- Wing dash with ergonomic design brings controls and gauges closer to the driver and provides space for up to eight more switches
- SmartPlex™ Electrical System expansion
- MP3, Satellite and Bluetooth
- Heated windshield
- Cummins ISL engine with up to 350 HP, 1150 lb-ft torque
- Cummins ISB engine with up to 325 HP, 750 lb-ft torque



FREIGHTLINERTRUCKS.COM



Competitive financing available through Daimler Truck Financial. For the Freightliner Trucks dealer nearest you, call 1-800-FTL-HELP. www.freightlinertrucks.com. 15M, 4/15, FTL/MC-B-1391. Specifications are subject to change without notice. Freightliner Trucks is registered to ISO 9001:2008 and ISO 14001:2004. Copyright © 2015, Daimler Trucks North America LLC. All rights reserved. Freightliner Trucks is a division of Daimler Trucks North America LLC, a Daimler company.

FREIGHTLINER

WORK SMART™

108SD

VOCATIONAL SEVERE DUTY





108SD

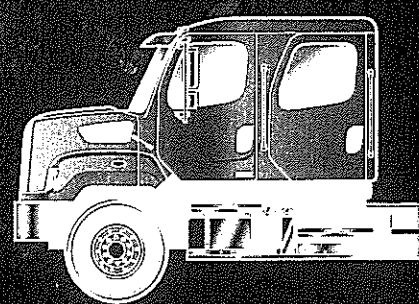
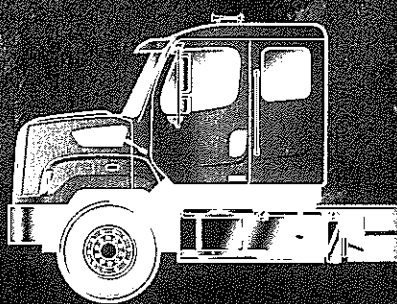
HEAVYWEIGHT POWER. EFFICIENT PACKAGE.

Freightliner's 108SD combines powerful, fuel-efficient engines, multiple power take-off (PTO) options, a chassis engineered for ease of upfit and a weight-optimized design. This severe duty truck takes toughness onto tight job sites and down narrow streets. It's powered by a Cummins® ISB or ISC engine, offering up to 350 horsepower and 1000 lb-ft torque. And it provides a wheel cut up to 50 degrees. The 108SD is extremely versatile, as well. Front engine, rear engine and transmission PTO options allow flexibility

for body hydraulic power needs. It offers integral front frame extensions in either 6" or 24" lengths. This gives a solid mounting point for hydraulic pumps, winches, hose reels, front stabilizers and snow plows. The 108SD also incorporates our proprietary SmartPlex™ Electrical System, which provides unmatched flexibility when configuring trucks for specific applications. Put simply, Freightliner has packed a lot of valuable features into an efficient package.

Available cab configurations:

- Day Cab
- Extended Cab
- Crew Cab

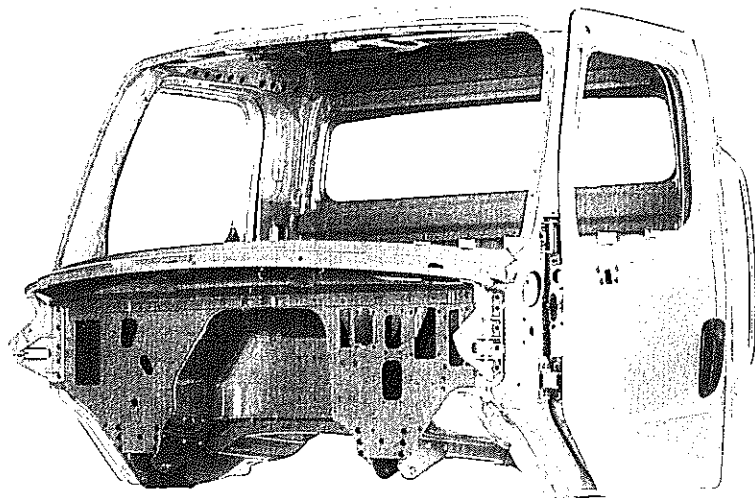



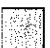

Set-Back
Axle

42"

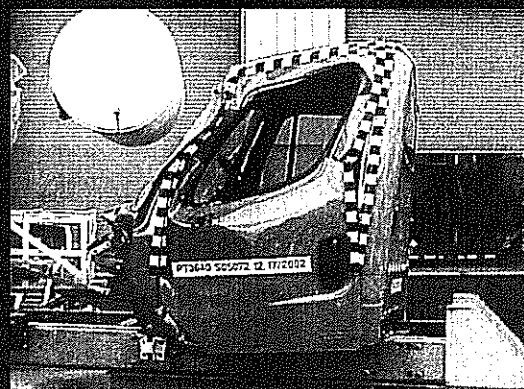
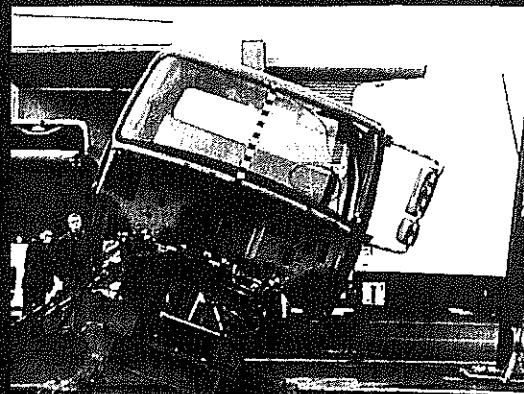
WHERE TOUGHNESS MEETS EFFICIENCY.

We've applied sophisticated engineering to the structural elements of our work trucks. First, our cabs are lightweight, yet extremely tough. Corrosion-resistant aluminum is reinforced with e-coated steel and assembled to precise manufacturing tolerances with Henrob rivets and welded construction. This process produces a durable and safe cab that meets stringent A-pillar impact, rollover and back wall impact tests. Plus, the chassis includes a robust backbone with a complete offering of single and double channel frame rails. The result is a tensile strength of up to 120,000 psi and an RBM ratio up to 4.4 million inch-pounds per rail. This means the 1145D can handle whatever job is thrown at it, day after day, year after year.

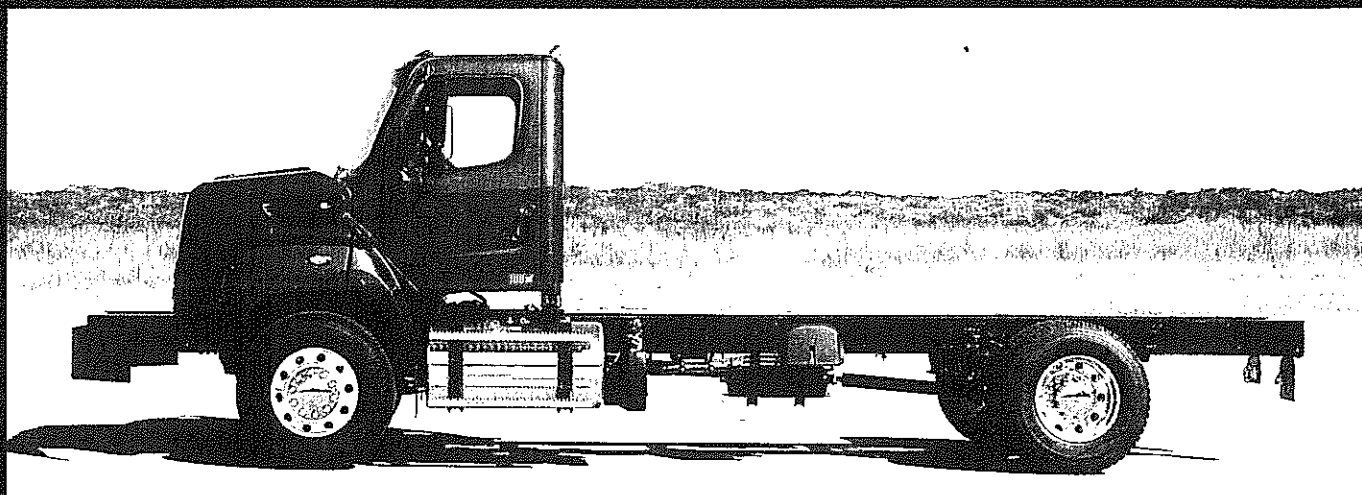


 Aluminum Structural Reinforcements
  E-coated Steel Reinforcements
  Corrosion-resistant Aluminum Panels

- Corrugated floor, roof and back-of-cab panels for added strength
- Meets Swedish A-pillar test standards and SAE J2422 roof strength requirements
- Available in day cab, extended cab or 4-door crew cab configurations
- 2,500 square-inch one-piece windshield for outstanding job site visibility
- Wide door openings with low step-in height for safe entry and exit
- Steel firewall for solid mounting of dash panel and driver controls



Components, systems and entire vehicles are subjected to an array of virtual and physical tests to ensure our trucks deliver the expected function, performance and reliability.

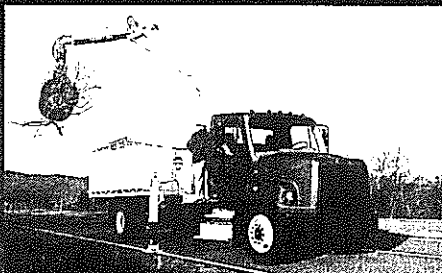


STANDARD FEATURES

- 108" BBC steel-reinforced aluminum day cab
- Set-back front axle position @ 42"
- Stationary radiator-mounted mold-in color front grille
- Tilt hood for easy engine access
- Front grille, headlight bezels, engine air intake grille, bumper and primary mirrors trimmed in black
- Halogen composite headlights
- Air rear cab mounts
- Ergonomic wing dash
- 63" x 14" rear window
- Up to 50-degree wheel cut, depending on wheel equipment
- Standard Cummins® ISC 350 HP, 1000 lb-ft torque engine
- Eaton® Fuller® 6-speed manual transmission
- Front axle rated at 12,000 lbs
- Rear axle rated at 21,000 lbs
- 50-gallon cylindrical fuel tank

OPTIONAL FEATURES

- Bright-accented front grille with chromed grille surround, headlight bezels and engine air intake grille
- Engine air intake pre-cleaner
- Integral front frame extensions in 6" and 24" lengths for front bumper stabilizer install
- Large selection of wheelbases with frames and frame reinforcements to meet severe duty needs
- Engine and transmission power take-offs
- Two or three batteries mounted under cab to optimize back-of-cab packaging
- Range of cylindrical and rectangular aluminum fuel tanks
- Steer axles from 10,000 to 20,000 lbs
- Single drive axles from 17,500 to 38,000 lbs rating
- Tandem drive axles from 40,000 to 46,000 lbs rating
- A wide range of Eaton® and Allison® transmissions
- Freightliner AirLiner® and TurbTrac® rear suspensions
- Hendrickson® walking beam and air-ride rear suspensions
- Expanded dash instrumentation, switches and controls to meet almost any vocational application
- Cummins® ISB engine with up to 325 HP, 750 lb-ft torque
- Frame-mounted front tow eyes



FREIGHTLINERTRUCKS.COM/WORKSMART



Competitive financing available through Daimler Truck Financial. For the Freightliner Trucks Dealer nearest you, call 1-800-FTL-HELP. www.freightlinertrucks.com. 20M, 1/2012. FTL/MC-A-1154. Specifications are subject to change without notice. Freightliner Trucks is registered to ISO 9001:2008 and ISO 14001:2004. Copyright © 2012. Daimler Trucks North America LLC. All rights reserved. Freightliner Trucks is a division of Daimler Trucks North America LLC, a Daimler company.

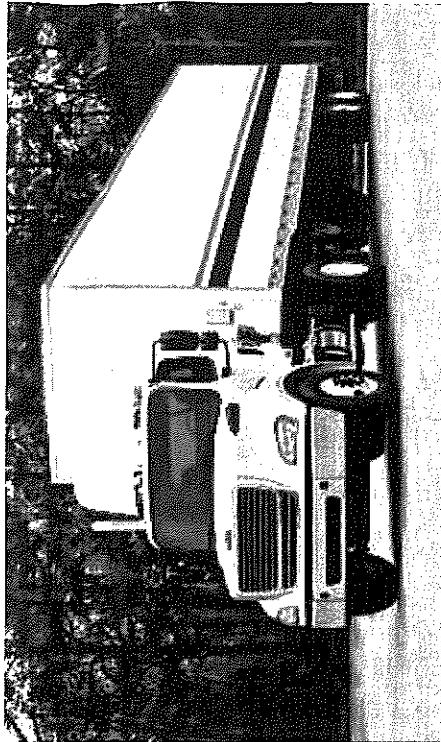
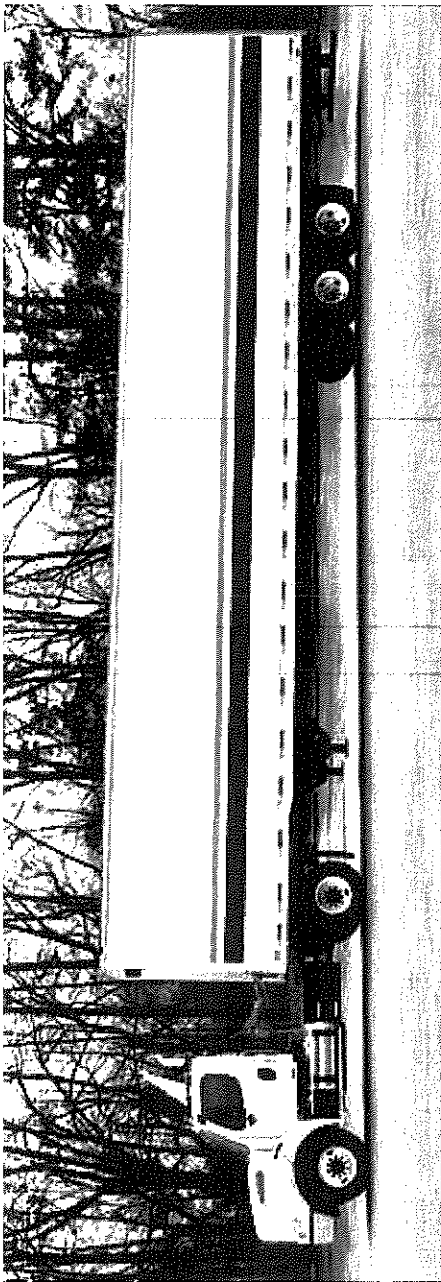
M2 112

DELIVERS BIG. DRIVES EASY.

The Freightliner® M2 112 is ideal for regional and in-town routes. It handles tight turns and loading docks with ease. The M2 112 also offers excellent visibility, which makes driving safer, especially in local traffic. This versatile vehicle is lighter than other trucks, yet still delivers up to 470 horsepower. So you get the power and fuel efficiency to run a profitable business. It comes equipped with the Detroit™ DD13® or a Cummins® L9 engine, or you can spec it for natural gas with a Cummins Westport ISL G. If you're looking for the easiest way to maximize productivity, the M2 112 is the truck for you. That's what we call running smart.



Run Smart™



M2 112

CLASS	6-8
GVW	Up to 60,700 lb.
BBC	112"
CAB CONFIGURATIONS	Day Cab Extended Cab Crew Cab
SUSPENSIONS	
Front	Freightliner taperleaf 12,000-20,000 lb. Freightliner flatleaf 14,600-23,000 lb.
Rear	Freightliner multileaf 23,000 lb. Freightliner flatleaf 23,000-31,000 lb. Freightliner flatleaf 40,000 lb. Freightliner Airliner* 21,000-23,000 lb. Freightliner Airliner* 40,000-46,000 lb. Freightliner Tultrec* 40,000-46,000 lb. Hendrickson HAULMAX* Tandem 40,000-46,000 lb. Hendrickson PRIMAAX* 46,000 lb.
AXLES	
Front	Detroit 10,000-20,000 lb. Meritor 12,000-22,000 lb.
Rear	Detroit Tandem 40,000-46,000 lb. Meritor Single 21,000-26,000 lb. Meritor Tandem 40,000-58,000 lb.
Configurations	4x2, 6x2, 6x4, 8x4

ENGINES	
Detroit™ DD13*	350-470 HP 1250-1650 lb-ft
Cummins® L9	260-380 HP 720-1250 lb-ft
Cummins® Westport ISL G Natural Gas	300 HP / 860 lb-ft or 320 HP / 1000 lb-ft
TRANSMISSIONS	
Manual	Eaton Fuller® 9-, 10-, 11-, 13- and 18-speed
Automated Manual	Eaton UltraShift® PLUS 10- and 13-speed
Automatic	Allison® 3000, 4000 and 4500 HS and RDS

STANDARD FEATURES

- > Configurations include truck, tractor or truck with end-of-frame trailer connectors
- > Comfortable, well-appointed aluminum cab with plenty of head and elbow room
- > Efficient dash and easy-to-reach automotive-style gauges and switches
- > 2500-square-inch tinted windshield
- > Downward-sloping aerodynamic hood provides a clear view of the road
- > Lower cab height with wider and taller doors, and low, non-slip steps for easy entry/exit
- > Multiple interior/exterior grab handles for easy entry/exit
- > Up to a 55-degree wheel cut, a set-back front axle and a swept-back front fender and bumper provide one of the industry's tightest turning radii, improving wall-to-wall and curb-to-curb maneuverability
- > Detroit™ Connect Virtual TechnicianSM remote diagnostic service, standard with the Detroit DD13

OPTIONAL FEATURES

- > Optional wing dash with ergonomic design brings controls and gauges closer to the driver and provides space for up to eight more switches
- > Optional door-mounted down-view mirrors and a passenger-door lower window enhance driver vision
- > Bumper spaced three inches forward to protect grille and headlights
- > Factory-painted and -installed roof fairings
- > Factory-installed CNG or LNG fuel tanks
- > Electronic Stability Control
- > 150-amp connection for use with trailer/truck lift gates and other body/trailer accessory needing high amperage
- > SmartPlex® electrical system:
 - Includes smart switches that do not require reprogramming after installation, eliminating the need to remove the dashboard to expand capabilities
 - Adds expansion capabilities and custom programming with no software to buy or additional tools required
 - Allows standard interfaces for engine, transmission, chassis lighting and trailer towing
 - Features the ServiceLink™ diagnostic and service tool that communicates with the M2 112's electronic control units (ECU) to make maintenance and repairs quick and easy



WORK SMART™



114SD

SEVERE DUTY



AVAILABLE CAB CONFIGURATIONS



Day Cab



Extended Cab



Crew Cab
(Set-Back Axle Only)



Set-Back Axle 48"



Set-Forward Axle 31"
*29.5" optional

AVAILABLE AXLE CONFIGURATIONS

114" BBC Set-Forward Axle
114" BBC Set-Back Axle

WORKING HARDER JUST GOT A LOT SMARTER.

The Freightliner Trucks 114SD is built for severe duty: packed with power and ready for work. For starters, the Detroit™ DD13® engine comes standard with a base rating of 350 HP and 1350 lb-ft of torque. Detroit™ DD8,™ Cummins® L9, X12, and ISX12N engines also are available as options. Detroit-powered 114SDs are available with the Detroit™ Connect suite of connected vehicle services to maximize uptime. The 114SD has optimized mid-chassis packaging and a strategically mounted aftertreatment system. The chassis layout simplifies upfitting for truck equipment manufacturers. And Freightliner's proprietary

SmartPlex® Electrical System provides unmatched flexibility when configuring a truck to suit specific body installations.

The 114SD also offers an incredible combination of durability and comfort. It's been through rigorous testing to ensure that it delivers performance and reliability in the most demanding situations. And the automotive-style interior is designed to keep operators safe and productive. Put simply, the 114SD sets the new standard for engineered performance and efficiency.

*Check with your dealer for availability.

THE FIVE CONTRIBUTING FACTORS THAT MAXIMIZE RCO.



UPFIT

Freightliner Trucks works closely with truck equipment manufacturers (TEMs) across a variety of segments to create vehicles with numerous segment-specific options and clear back-of-cab packaging that TEMs can efficiently upfit, reducing time and costs.



UPTIME

Our robust support footprint features a 24/7 toll-free hotline and hundreds of service locations with factory-certified technicians—including more than 400 dealership locations. About 80% are Elite Support Certified dealers. With Detroit™ Connect Virtual Technician™ diagnostic services*, you know within minutes when vehicles experience engine fault events, the severity, and when, where, and how to best fix the issue.

*Only available on trucks equipped with Detroit™ engines.



SAFETY

We understand the importance of operator visibility, entry and egress. Comfort in the truck during a long workday can help reduce fatigue and improve safety. Freightliner's vocational trucks offer numerous available safety features and ergonomically designed, well-insulated cabs to help keep drivers safe and productive.



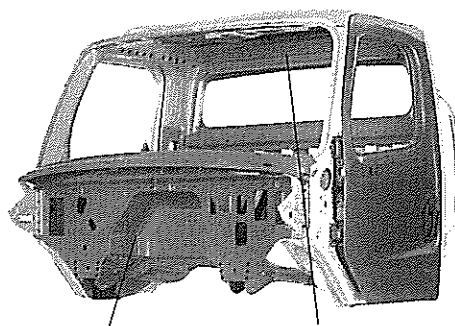
QUALITY

Freightliner trucks are designed to maximize reliability and longevity. We rigorously test our products to ensure each model meets or exceeds customer business needs. Quality construction and durable materials help Freightliner trucks stay on the job and drive business results.



PRODUCTIVITY

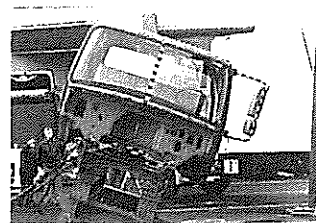
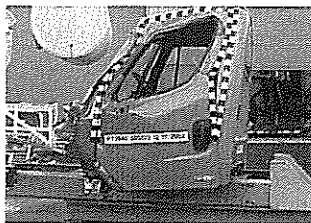
Productivity starts with efficiency and dependability that maximize uptime. A truck has to be in-service and getting the job done. We're focused on designing and testing medium- and severe-duty trucks for real-world conditions.



E-coated Steel Reinforcements

Aluminum Structural Reinforcements

- Corrugated floor, roof and back-of-cab panels for added strength
- Meets Swedish A-pillar test standards and SAE J2422 roof strength requirements
- Available in day cab, extended cab or 4-door crew cab configurations
- 2500-sq.-in. one-piece windshield for outstanding jobsite visibility
- Wide door openings with low step-in height for safe entry and egress
- Steel firewall for solid mounting of dash panel and driver controls



Components, systems and entire vehicles are subjected to an array of virtual and physical tests to ensure our trucks deliver the expected function, performance and reliability.

WHERE TOUGHNESS MEETS EFFICIENCY.

We've applied sophisticated engineering to the structural elements of our work trucks. First, our cabs are lightweight, yet extremely tough. Corrosion-resistant aluminum is reinforced with e-coated steel and assembled to precise manufacturing tolerances with Henrob rivets and welded construction. This process produces a durable and safe cab that meets stringent A-pillar impact, rollover and back wall impact tests. Plus, the vocational chassis includes a robust backbone with a complete offering of single- and double-channel frame rails. The result is a tensile strength of up to 120,000 psi and an RBM ratio up to 4.4 million inch-pounds per rail. This means the 114SD can handle whatever job is thrown at it, day after day, year after year.

SPECS AND OPTIONS

STANDARD FEATURES

- 114" BBC steel-reinforced aluminum day cab
- Set-forward front axle position at 31"
- Strong, durable cab and hood
- Radiator-mounted mold-in color front grille with signature styling
- Front grille, headlight bezels, engine air intake grille, bumper and primary mirrors trimmed in black
- Halogen composite headlights
- Air rear cab mounts
- Ergonomic wing dash
- 63" x 14" rear window
- Up to 50-degree wheel cut, depending on wheel equipment
- Detroit™ DD13® engine with 350 HP, 1350 lb-ft torque
- Eaton® Fuller® 10-speed manual transmission
- Front axle rated at 12,000 lbs.
- Rear axle rated at 40,000 lbs.
- 60-gallon cylindrical fuel tank

SPECIALIZED OPTIONS

- Allison 4700 RDS transmission
- Twin steer prep package
- Bridge formula bumpers for 29.5" front axle position
- Mixer body transition plates
- Set-back front axle position at 48"
- Switch/harness pre-wire for lights (multiple configurations)
- Fresh air intake snow shield
- Snow plow crossmember for wing plow support
- Extreme-climate thermal cab insulation
- Carbon fiber-reinforced aluminum type 3 compressed natural gas (CNG) fuel tanks with approximate range of 400 miles, depending on application
- 4.4 million RBM multichannel frame rails
- 60-gallon cylindrical fuel tank

OPTIONAL FEATURES

- Bright-accented front grille with chromed grille surround, headlight bezels and engine air intake grille
- Engine air intake pre-cleaner
- Integral front frame extensions in 12" and 24" lengths for front bumper stabilizer install
- Large selection of wheelbases with frames and frame reinforcements to meet severe duty needs
- Front engine, rear engine and transmission power take-offs
- Three batteries mounted under cab with clear back-of-cab packaging
- Range of cylindrical and rectangular aluminum fuel tanks
- Steer axles from 12,000 to 22,000 lbs.
- Single drive axles from 21,000 to 38,000 lb. rating
- Tandem drive axles from 40,000 to 58,000 lb. rating
- Tridem drive axle set rated at up to 69,000 lbs.
- Multiple clear frame specifications for outrigger installation
- Pusher and tag axles rated from 8,000 to 22,000 lbs., available in single or dual configurations
- A wide range of Eaton and Allison transmissions including 4700 RDS
- Freightliner AirLiner® and TufTrac® rear suspensions
- Hendrickson® and Chalmers® rear suspensions
- Expanded dash instrumentation, switches and controls to meet almost any vocational application
- Detroit™ DD13® engine with up to 505 HP and 1850 lb-ft torque
- Detroit™ DD8™ engine with up to 350 HP and 1050 lb-ft torque
- Cummins® L9 engine with up to 350 HP and 1300 lb-ft torque
- Cummins® X12 engine with up to 500 HP and 1700 lb-ft torque
- Cummins Westport ISX12N natural gas engine with up to 400 HP and 1450 lb-ft torque
- Removable and frame-mounted front tow devices
- Grab handles with rubber inserts
- 3.2 million RBM single-channel frame rail
- Engine compartment lighting



WORK SMART™

122SD

VOCATIONAL TRACTOR SEVERE DUTY



BUILT FOR MAJOR HAULS.



Some jobs are bigger than others. You may be hauling logs down a forest road. Or transporting an oversize load across the Alaskan wilderness. Whatever the job, it's critical to have a truck that can handle it without fail. The Freightliner Trucks 122SD is

suspension that helps maximize payload. And the optional front axle skid plate better protects the oil pan and the 1,700 square-inch radiator. It's no wonder the 122SD is the truck of choice for the oil and gas industry, as well as for heavy-duty

TOUGH INSID

The 122SD is tough. Test after and entire truck have been sut ensure the 122SD delivers the The result is a durable and safe and back wall impact tests. backbone with a complete offe provides a tensile strength of u inch-pounds per rail. So it can f



Aluminum Structural Reinforcements

- A durable, proven, non-corros
- Strong cab construction; Hen
- State-of-the-art adhesives to t decrease fatigue
- Bonded windshields increase to replace when damaged

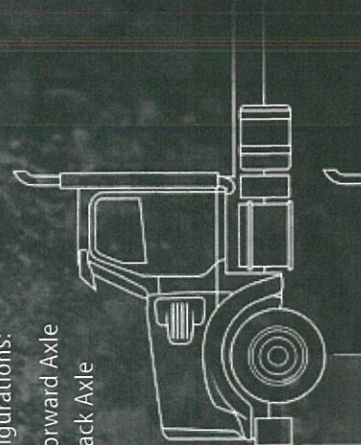
FORM AND FUNCTION.

The 122SD has rugged good looks, beginning with the stainless steel front grille, dual hood-mounted air intakes, bright-finish steel grille surround and signature chromed hood handle. It also has a new exhaust shield that provides better coverage of the exhaust pipe for a cleaner look and standard West Coast mirrors.

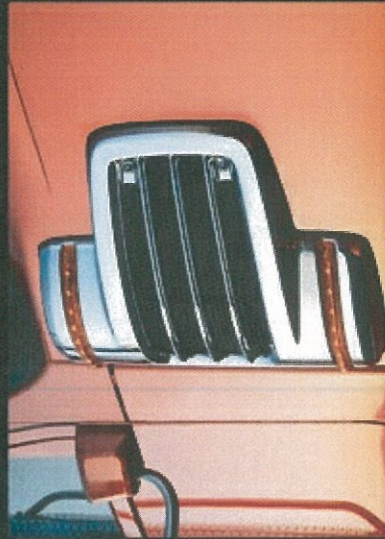
The functional design of the exterior includes a new optional skid plate, as well as bumper and radiator guards to limit damage from tough job sites. You also can spec optional work lights, dual hood latches, and have pre-cleaners built into the hood air plenum.

Available axle configurations:

- 122" BBC Set-Forward Axle
- 122" BBC Set-Back Axle



Set-Back Axle



Dual hood-mounted air intakes. Chromed steel finish optional.



Up to 50-degree wheel cut.



Optional skid plate for under-chassis protection.



Optional chrome logger bumper.

BIG BIG

The 122 differen package, configu and per fuel effi In addi the 122 suspens for mor when d wheel c And the exceller The 122 can wit life of ; come o

ENG

Detroit DD

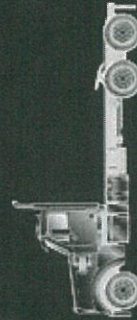
Detroit DD

Detroit DD

Cummins I

All engines

TRAI

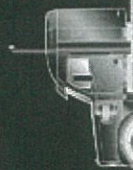


Day Cab

34" Mid-Roof

48" Mid-Roof

58" Mid-Roof



IT'S BIG ON COMFORT AND SAFETY.

The interior of the 122SD is wide, roomy and packed with comfort and safety features: tilt/telescoping steering wheel, ivory-colored gauges with LED backlights and in-dash, backlit PTO controls. Air weight and tire pressure gauges are located inside the cab. And the dash is constructed in fewer sections for less noise and greater durability.

The 122SD provides drivers with easy access to switches and storage, flexible seating options and a new optional driver side air bag. The curved, two-piece windshield makes it easier to spot and avoid potential hazards. And the exterior mirrors have been repositioned for even better visibility. The driver's side now has an optional grab handle for easier and safer entry.

The filtered HVAC offers superior airflow and climate control, keeping temperatures more consistent and reducing driver fatigue. Freightliner offers an optional Extreme Climate Thermal package for even greater insulation and comfort.

The 122SD also is available in several sleeper configurations, from 34 to 70 inches. Each offers ample storage and work space. And you can choose from several bunk options to ensure maximum comfort while on the road.



Large opening for easy driver entry/egress.



EASIER MAINTENANCE. BETTER BUSINESS.

Maintenance plays a big part in a truck's total cost of ownership. That's why the 122SD was engineered to be easy to maintain. The one-piece, fiberglass hood tilts almost 90 degrees and requires just six pounds of lift effort to open. See-through fluid reservoirs make daily checks quick. A three-stage air intake system combats airborne dust and dirt in the engine. The single air filter holds more dirt than dual filters, extending change intervals. And longer oil change intervals also mean less downtime. Put simply, the 122SD is built to work hard. And Freightliner has engineered it to help you work smart.

DETROIT VIRTUAL TECHNICIAN™ ONBOARD DIAGNOSTIC SYSTEM

If the check engine light illuminates, this state-of-the-art system sends real-time engine information to the Detroit Customer Support Center for remote diagnosis. The driver then is notified of the severity of the problem and what steps to take. Repair parts can be ordered immediately and the driver can be directed to the nearest dealer. This system reduces downtime by providing immediate information to enhance productivity and safety. And the optional Visibility Package provides real time vehicle information through the Ground Traffic Control website.



122SD Logger



122SD Specialty Haul



WE'VE GOT YOU COVERED.

UNMATCHED SERVICE AND SUPPORT.

With more than 300 Freightliner dealer locations across North America, you're never far from the convenient service and support you have come to expect from the industry leader. In addition, more than 300 Freightliner ServicePoint® facilities located at TravelCenters of America and Petro Stopping Centers offer certified repair and warranty work. When you need a factory-certified technician, the Detroit brand offers more than 800 locations in North America.

Freightliner also maintains strategically located parts distribution centers throughout North America, ensuring fast parts delivery to keep customers up and running.

Freightliner's Customer Assistance Center provides customers a hotline that's available 24 hours a day, seven days a week. Customers may call the toll-free number (1-800-FTL-HELP) for technical support, to arrange roadside assistance or towing services, or to locate the nearest dealer or service center.

A SIMPLE PURCHASE PROCESS THAT'S SECOND TO NONE.

Purchasing a truck is one of the most important decisions you make. Freightliner makes the buying process easy, with highly trained sales consultants and one of the largest dealer networks in the industry, so businesses don't have to look far for their next purchase. Count on Freightliner dealers for reliable product information, truck parts and service, and ongoing customer support.

FINANCING IS EASY.

Daimler Truck Financial (DTF) offers a variety of options, including loans and leases tailored to the trucking industry, that make financing go smoothly. DTF has been meeting the financing challenges of owner-operator and vocational customers for more than 30 years. It offers finance solutions including conventional retail financing at attractive and competitive rates, a variety of terms to match cash flow, and up to 100% financing for qualified customers.

Daimler Truck Financial

Financing that works for you.



COMPREHENSIVE WARRANTIES FOR ADDED PEACE OF MIND.

Freightliner stands behind its trucks every step of the way. We offer one of the most comprehensive warranties in the business, as well as a variety of extended warranties.

BETTER PARTS. GOOD PRICES.

Alliance Truck Parts offers a range of new and remanufactured maintenance, repair and replacement parts and accessories for virtually all types of heavy-duty trucks at an affordable price. Alliance Truck Parts are sold at Freightliner dealers throughout the U.S. and Canada.



FREIGHTLINERTRUCKS.COM/WORKSMART



WORK SMART

Competitive financing available through Daimler Truck Financial. For the Freightliner Trucks dealer nearest you, call 1-800-FTL-HELP. www.freightlinertrucks.com. 10M, 2/13, FTL/MC-B-1229. Specifications are subject to change without notice. Freightliner Trucks is registered to ISO 9001:2008 and ISO 14001:2004. Copyright © 2013, Daimler Trucks North America LLC. All rights reserved. Freightliner Trucks is a division of Daimler Trucks North America LLC, a Daimler company.