



CENTRALBIDDING
FROM CENTRAL AUCTION HOUSE

5000117804 - QUANTITY OF VARIOUS ELECTRICAL EQUIPMENT
Jefferson Parish Government

Project documents obtained from www.CentralBidding.com

14-Sep-2016 02:38:16 PM



Bid Number 50-00117804

QUANTITY OF VARIOUS ELECTRICAL EQUIPMENT

BID DUE: SEPTEMBER 28, 2016 AT 11:00 A.M.

ATTENTION VENDORS!!!

Please review all pages and respond accordingly, complying with all provisions in the technical specifications and Jefferson Parish Instructions for Bids and General Terms and Conditions. All bids must be received in the Purchasing Department by the bid due date and time.

**Jefferson Parish Purchasing Department
200 Derbigny Street
General Government Building, Suite 4400
Gretna, LA 70053**

**Buyer Name: Misty A. Camardelle
Buyer Email: mcamardelle@jeffparish.net
Buyer Phone: 504-364-2683
FAX: 504-364-2693**



JEFFERSON PARISH

Department of Purchasing

Michael S. Yenni
Parish President

Brandi J. Campos
Director

CHANGES TO JEFFERSON PARISH BIDDING PROCEDURES

Bidders should carefully read and must respond accordingly per the requirements of the bid packages. Bidders should reference the "Additional Requirements" section of the bid instructions and/or the "Important Notice to Bidders" included in the bid package for specific requirements to respond accordingly.

Effective August 1, 2016, please be advised:

- Affidavits (Non-Public Works Affidavit or Public Works Affidavit) – as you are aware, bidders are required to submit affidavits pursuant to LA public bid law and Jefferson Parish Code of Ordinances. Bidders must read each bid package to ensure compliance. Effective August 1st, *affidavits are required with bid submission*. While copies are acceptable to include with bid submission, original affidavits are required upon contract execution. Original affidavits are encouraged with bid submission.
- Current W9 Forms and vendor applications may be submitted at any time; however, if your company is not registered and/or a current W-9 form is not on file, a current W-9 form must be supplied upon contract execution, should you be awarded a contract and/or issued a purchase order.
- Upon contract execution, successful bidder must continue producing final insurance certificates per standard Jefferson Parish insurance requirements. Proof of insurance is required for bidding purposes. Bidders must read the insurance requirements attachment included in each bid package for specific instructions.

These changes are pursuant Louisiana Public Bid Law more specifically, Act 406 of the 2016 Louisiana Legislative Regular Session. For the purposes of this communication, this change applies to Jefferson Parish Government bid solicitations only. For more information, please call Jefferson Parish Purchasing at 504-364-2678.

DATE: 9/14/2016

INVITATION TO BID
THIS IS NOT AN ORDER

Page: 1

BID NO.: 50-00117804

JEFFERSON PARISH

PURCHASING DEPARTMENT
P.O. BOX 9
GRETN, LA, 70054-0009
504-364-2678

VENDOR: 27118 BLANK BID COPY VENDOR

BUYER: MCannell

Bids will be received until 11:00 AM, 9/28/2016 via fax: 504-364-2693 or via online at www.jeffparish.net

All bids submitted are subject to these instructions and general conditions and any special conditions and specifications contained herein, all of which are made part of this bid proposal reference. By submitting a bid, vendor agrees to comply with all provisions of Louisiana Law, as well be in compliance with the Jefferson Parish Code of Ordinances, Louisiana Code of Ethics, applicable Jefferson Parish ethical standards and Jefferson Parish Resolution No. 113646 and/or Resolution No. 113647. A copy of these resolutions may be obtained from the Office of the Parish Clerk, Suite 8700, Jefferson Parish General Government Building, 200 Derbigny Street, Gretna, LA 70053. You may also obtain a copy by visiting the Purchasing Department webpage at www.purchasing.jeffparish.net and clicking on On-line forms.

All vendors submitting bids should register as a Jefferson Parish vendor if not already yet registered. Registration forms may be downloaded from www.purchasing.jeffparish.net and by clicking on Vendor Information. While Jefferson Parish may have these on file, all bidders should furnish their current W-9 Form and respective Tax Identification Numbers with bid submission; records on file may be invalid or expired. The successful bidder must submit a W-9 Form and respective Tax Identification Number upon contract execution. Failure to do so may result in delay of payment.

As per LSA-RS 47:301 et seq., all governmental bodies are excluded from payment of sales taxes to any Louisiana taxing body. Quotations shall be based on F.O.B. Delivered, anywhere within the Parish as designated by the Purchasing Department. JEFFERSON PARISH WILL ACCEPT ONE BID ONLY FROM EACH VENDOR. Items bid must meet specifications. JEFFERSON PARISH will accept one price for each item unless otherwise indicated. Two or more prices for one item will result in bid rejection. Bidders are required to complete, sign and return the bid form and/or acceptance of the project. Any deviations or alterations from the specifications must be indicated and/or supporting documentation supplied with bid submission. The price quoted for work shall be stated in figures. In the event there is a difference in unit prices and totals the unit prices shall prevail.

JEFFERSON PARISH reserves the right to award contracts or place orders on a lump sum or individual item basis, or such combination, as shall in its judgment be in the best interest of JEFFERSON PARISH. Every contract or order shall be awarded to the LOWEST RESPONSIVE and RESPONSIBLE BIDDER, taking into consideration the CONFORMITY WITH THE SPECIFICATIONS and the DELIVERY AND/OR COMPLETION DATE.

JEFFERSON PARISH reserves the right to cancel all or any part of an order if not shipped promptly. No charges will be allowed for parking or cartage unless specified in the quotation. The order must not be filled at a higher price than quoted. JEFFERSON PARISH reserves the right to cancel at any time and for any reason by issuing a THIRTY (30) day written notice to the contractor.

JEFFERSON PARISH requires all products to be new (current) and all work must be performed according to standard practices for the project. Unless otherwise specified, no aftermarket parts will be accepted. Unless otherwise specified, all workmanship and materials must have at least one (1) year warranty, in writing, from the date of delivery and/or acceptance of the project. Any deviations or alterations from the specifications must be indicated and/or supporting documentation supplied with bid submission.

If this bid requires a pre-bid conference (see Additional Requirements section), bidders are advised that such conference will be held to allow bidders the opportunity to identify any discrepancies in the bid specifications and seek further clarification regarding instructions. The Purchasing Department will issue a written response to bidders' questions in the form of an Addendum.

All formal Addenda require written acknowledgment on the bid form by the bidder. Failure to acknowledge an Addendum on the bid form shall cause the bid to be rejected; JEFFERSON PARISH reserves the right to award bid to next lowest responsive and responsible bidder in this event.

USE OF BRAND NAMES AND STOCK NUMBERS: Where brand names and stock numbers are specified, it is for the purpose of establishing certain minimum standards of quality. Bids may be submitted for products of equal quality, provided brand names and stock numbers are specified. Complete product data may be required prior to award.

Quantities listed are for bidding purposes only. Actual requirements may be more or less than quantities listed.

Bidders are not to exclude from participation in, deny the benefits of, or subject to discrimination under any program or activity, any person in the United States on the grounds of race, color, national origin, or sex; nor discriminate on the basis of age under the Age Discrimination Act of 1975, or with respect to an otherwise qualified handicapped individual as provided in Section 504 of the Rehabilitation Act of 1973, or on the basis of religion, except that any exemption from such prohibition against discrimination on the basis of religion as provided in the Civil Rights Act of 1964, or Title VI and VII of the Act of April 11, 1968, shall also apply. This assurance includes compliance with the administrative requirements of the Revenue Sharing final handicapped discrimination provisions contained in Section 61.55 (c), (d), (e), and (k)(5) of the Regulations. New construction or renovation projects must comply with Section 504 of the 1973 Rehabilitation Act, as amended, in accordance with the American National Standard Institute's specifications (ANSI A117.1-1981).

DATE: 9/14/2016

BID NO.: 50-00117804

Page: 2

INSTRUCTIONS FOR BIDDERS AND GENERAL CONDITIONS

IN ACCORDANCE WITH STATE REGULATIONS JEFFERSON PARISH OFFERS ELECTRONIC PROCUREMENT TO ALL VENDORS

This electronic procurement system allows vendors the convenience of reviewing and submitting bids online. This is a secure site and authorized personnel have limited read access only. Bidders are encouraged to submit electronically using this free service, while the website accepts various file types, one single PDF file containing all appropriate and required bid documents is preferred. Bidders submitting uploaded images of bid responses are solely responsible for clarity. If uploaded images/documents are not legible, then bidder's submission will be rejected. Please note all requirements contained in this bid package for electronic bid submission.

ADDITIONAL REQUIREMENTS FOR THIS BID

PLEASE MATCH THE NUMBERS PRINTED IN THIS BOX WITH THE CORRESPONDING INSTRUCTIONS BELOW.

13

1. All bidders must attend the MANDATORY pre-bid conference and will be required to sign in and out as evidence of attendance. In accordance with LSA R.S. 38:2212(I), all prospective bidders shall be present at the beginning of the MANDATORY pre-bid conference and shall remain in attendance for the duration of the conference. Any prospective bidder who fails to attend the conference or remain for the duration shall be prohibited from submitting a bid for the project.
2. Attendance to this pre-bid conference is optional. However, failure to attend the pre-bid conference shall not relieve the bidder of responsibility for information discussed at the conference. Furthermore, failure to attend the pre-bid conference and inspection does not relieve the successful bidder from the necessity of furnishing materials or performing any work that may be required to complete the work in accordance with the specification with no additional cost to the owner.
3. Contractor must hold current applicable JEFFERSON PARISH licenses with the Department of Inspection and Code Enforcement. Contractor shall obtain any and all permits required by the JEFFERSON PARISH Department of Inspection and Code Enforcement. The contractor shall be responsible for the payment of these permits. All permits must be obtained prior to the start of the project. Contractor must also hold any and all applicable Federal and State licenses. Contractor shall be responsible for the payment of these permits and shall obtain them prior to the start of the project.
4. A LA State Contractor's License will be required in accordance with LSA R.S. 37:2150 et. seq. and such license number will be shown on the outside of the bid envelope. Failure to comply will cause the bid to be rejected. Additionally if submitting the bid electronically, then the license number must be entered in the appropriate field in the Electronic Procurement system. Failure to comply will cause the bid to be rejected.
5. It is the bidder's responsibility to visit the job site and evaluate the job before submitting a bid.
6. Job site must be clean and free of all litter and debris daily and upon completion of the contract. Passageways must be kept clean and free of material, equipment, and debris at all times. Flammable material must be removed from the job site daily because storage will not be permitted on the premises. Precautions must be exercised at all times to safeguard the welfare of JEFFERSON PARISH and the general public.

DATE: 9/14/2016

BID NO.: 60-00117804

Page: 3

INSTRUCTIONS FOR BIDDERS AND GENERAL CONDITIONS

7. **PUBLIC WORKS BIDS:** All awards for public works in excess of \$5,000.00 will be reduced to a formal contract which shall be recorded at the contractor's expense with the Clerk of Court and Ex-Officio Recorder of Mortgages for the Parish of Jefferson. A price list of recordation costs may be obtained from the Clerk of Court and Ex-Officio Recorder of Mortgages for the Parish of Jefferson. All awards in excess of \$25,000.00 will require both a performance and a payment bond. Unless otherwise stated in the bid specifications, the performance bond requirements shall be 100% of the contract price. Unless otherwise state in the bid specifications, the payment bond requirements shall be 100% of the contract price. Both bonds shall be supplied at the signing of the contract.
8. **NON-PUBLIC WORKS BIDS:** A performance bond will be required for this bid. The amount of the bond will be 100% of the contract price unless otherwise indicated in the specifications. The performance bond shall be supplied at the signing of the contract.
9. **NON-PUBLIC WORKS BIDS:** A payment bond will be required for this bid. The amount of the bond will be 100% of the contract price unless otherwise indicated in the specifications. The payment bond shall be supplied at the signing of the contract.
10. Unless otherwise stated in the bid specifications, the successful bidder will be required to procure standard insurance policies evidencing Parish-mandated insurance requirements as indicated on the attached "insurance requirements" sheet. All bidders must comply with the instructions in this sheet. Failure to comply will cause bid to be rejected.
11. A bid bond will be required with bid submission in the amount of 5% of the total bid, unless otherwise stated in the bid specifications. Acceptable forms shall be limited to cashier's check, certified check, or surety bid bond. All sureties must be in original format (no copies). If submitting a bid online, vendors must submit an electronic bid bond through the respective online clearinghouse bond management system(s) as indicated in the electronic bid solicitation on Central Auction House. No scanned paper copies of any bid bond will be accepted as part of the electronic bid submission.
12. This is a requirements contract to be provided on an as needed basis. JEFFERSON PARISH makes no representations on warranties with regard to minimum guaranteed quantities unless otherwise stated in the bid specifications.
13. Freight charges should be included in total cost when quoting. If not quoted FOB DELIVERED, freight must be quoted as a separate item. Bid may be rejected if not quoted FOB DELIVERED or if freight charges are not indicated on bid form.
14. **PUBLIC WORKS BIDS - Completed, Signed and Properly Notarized Affidavits Required;** This applies to all solicitations for construction, alteration or demolition of public buildings or projects, in conformity with the provisions contained in LSA-RS 38:2212.9, LSA-RS 38:2212.10, LSA-RS 38:2224, and Sec 2-923.1 of the Jefferson Parish Code of Ordinances. For bidding purposes, all bidders must submit with bid submission COMPLETED, SIGNED and PROPERLY NOTARIZED Affidavits, including: Non-Conviction Affidavit, Non-Collusion Affidavit, Campaign Contribution Affidavit, Debt Disclosures Affidavit and E-Verify Affidavit. For the convenience of vendors, all affidavits have been combined into one form entitled PUBLIC WORKS BID AFFIDAVIT. This affidavit must be submitted in its original format, and without material alteration, in order to be compliant and for the bid to be considered responsive. A scanned copy of the completed, signed and properly notarized affidavit may be submitted with the bid, however, the successful bidder must submit the original affidavit in its original format and without material alteration upon contract execution. Failure to comply will result in the bid submission being rejected as non-responsive. The Parish reserves the right to award bid to the next lowest responsive and responsible bidder in this event.
15. **NON PUBLIC WORK BIDS - Completed, Signed and Properly Notarized Affidavits Required** in conformity with the provisions contained in LSA - RS 38:2224 and Sec 2-923.1 of the Jefferson Parish Code of Ordinances. For bidding purposes, all bidders must submit with bid submission COMPLETED, SIGNED and PROPERLY NOTARIZED Affidavits, including: Non-Collusion Affidavit, Debt Disclosures Affidavit and Campaign Contribution Affidavit. For the convenience of vendors, all affidavits have been combined into one form entitled NON PUBLIC WORKS BID AFFIDAVIT. This affidavit must be submitted in its original format, and without material alteration, in order to be compliant and for the bid to be considered responsive. A scanned copy of the completed, signed and properly notarized affidavit may be submitted with the bid, however, the successful bidder must submit the original affidavit in its original format and without material alteration upon contract execution. Failure to comply will result in the bid submission being rejected as non-responsive. The Parish reserves the right to award bid to the next lowest responsive and responsible bidder in this event.
16. The ensuing contract for this bid solicitation may be eligible for FEMA reimbursement and/or Federal funding/reimbursement. As such, the referenced appendix will be applicable accordingly and shall be considered a part of the bid documents. All applicable certifications must be duly completed, signed and submitted with bid submission. Failure to submit applicable certifications with bid submission will result in bid rejection.

It shall be the duty of every parish officer, employee, department, agency, special district, board, and commission; and the duty of every contractor, subcontractor, and licensee of the parish, and the duty of every applicant for certification of eligibility for a parish contract or program, to cooperate with the Inspector General in any investigation, audit, inspection, performance review, or hearing pursuant to Jefferson Parish Code of Ordinances Section 2-165.10(19). By submitting a bid, vendor acknowledges this and will abide by all provisions of the referenced Jefferson Parish Code of Ordinances.

DATE: 9/14/2016

INVITATION TO BID
THIS IS NOT AN ORDER

Page: 4

BID NO.: 50-00117804

JEFFERSON PARISH

PURCHASING DEPARTMENT
P.O. BOX 9
GRETN, LA, 70054-0009
504-384-2678

VENDOR: 27118 BLANK BID COPY VENDOR

BUYER: MCamardell

As per LSA-RS 47:301 et seq., all governmental bodies are excluded from payment of sales taxes to any Louisiana taxing body. Quotations shall be based on F.O.B. Agency warehouse or jobsite, anywhere within the Parish as designated by the Purchasing Department.

JEFFERSON PARISH reserves the right to cancel all or any part of an order if not shipped promptly. No charges will be allowed for parking or cartage unless specified in quotation. The order must not be filled at a higher price than quoted. JEFFERSON PARISH reserves the right to cancel at any time and for any reason by issuing a THIRTY (30) day written notice to the contractor.

JEFFERSON PARISH is expecting all products to be new and all work is to be done in a workman-like manner, according to standard practices. Any deviations or alterations from the specifications must be indicated and backup documentation supplied with your quotation.

DELIVERY: FOB JEFFERSON PARISH

INDICATE DELIVERY DATE ON EQUIPMENT AND SUPPLIES

3-4 weeks

INDICATE STARTING TIME (IN DAYS) FOR CONSTRUCTION WORK

INDICATE COMPLETION TIME (IN DAYS) FOR CONSTRUCTION WORK

In the event that addenda are issued with this bid, bidders MUST acknowledge all addenda on the bid form. Bidder must acknowledge receipt of an addendum on the bid form as indicated. Failure to acknowledge any addendum on the bid form will result in bid rejection.

Acknowledge Receipt of Addenda: NUMBER: _____

NUMBER: _____

NUMBER: _____

NUMBER: _____

LOUISIANA CONTRACTOR'S LICENSE NO.: (if applicable) _____

*** ALL BIDDERS MUST COMPLETE SECTION BELOW ***	
FIRM NAME: <u>The Reynolds Co.</u>	
SIGNATURE: (Must be signed here)	TITLE:
<u>D Landreneau</u>	<u>Sales</u>
PRINT OR TYPE NAME: <u>DARREN LANDRENEAU</u>	
ADDRESS: <u>700 Elmwood Park Blvd Ste A</u>	
CITY, STATE: <u>Harahan, La</u>	ZIP: <u>70123</u>
TELEPHONE: <u>(504) 734-6228</u>	FAX: <u>(504) 734-6212</u>
EMAIL ADDRESS: <u>DPLANDRENEAU@REYNCO.COM</u>	

TOTAL PRICE OF ALL BID ITEMS: \$ 18,630.00

DATE: 9/14/2016

Page: 5

INVITATION TO BID FROM JEFFERSON PARISH - continued

BID NO.: 50-00117804

SEALED BID

ITEM NUMBER	QUANTITY	U/M	DESCRIPTION OF ARTICLES	UNIT PRICE QUOTED	TOTALS
			QUNATITY OF VARIOUS ELECTRICAL EQUIPMENT		
1	1.00	EA	0001 - Blower, oil-less regenerative, 1-1/2 HP, TEFC motor, 115/230 volt, FPZ model D13767 (K04-MS) (0596270)	\$1545 ⁰⁰	\$1545 ⁰⁰
2	6.00	EA	0002 - Fuse, dual element, time delay, 70 amp, 250 volt, Gould no. TR70R (0855250)	\$754	\$4524
3	200.00	EA	0003 - Connector, female, sta-con, 22-18 wire range, insulated, T & B no. 18RAD18377 (0870400)	\$1.52	\$104 ⁰⁰
4	50.00	EA	0004 - Lug, wire connector, 1 hole, no. 2 cable size, 1/4 in stud size, Thomas and Betts no. 60116 (0870730) AL2-14	\$2.53	\$131 ⁰⁰
5	75.00	ST	0005 - Clamp, channel pipe, for 3/4 in rigid electrical conduit, with bolt and nut, 2 pieces equals 1 set, Unistrut, stainless steel, type 304, McMaster-Carr no. 3230T88 (0878940) FS1100-A-3/4-S14	\$1.55	\$116 ²⁵
6	250.00	EA	0006 - Spring, channel, 1/4-20, Unistrut no. P10081420 (0879000) FS-1/4RS-EG	\$43	\$10750
7	16.00	EA	0007 - Tubing, heat shrink, 1/2 inch diameter x 36 inch long each, ICO-Rally no. H1M6-1/2 or equal (0384760)	\$1.12	\$1792
8	12.00	EA	0008 - Breaker, circuit, 150 amperes, 800 volt, 3 pole, with lugs, new in factory box, Westinghouse no. HMCP150U4 (0841680)	\$129 ³⁵	\$1553 ²⁰
9	6.00	EA	0009 - Breaker, circuit, 30 amperes, 277/480 volt, 3 pole, with lugs,	\$253 ⁸⁴	\$1520 ⁰⁴

DATE: 9/14/2016

Page: 8

INVITATION TO BID FROM JEFFERSON PARISH - continued

BID NO.: 60-00117804

SEALID BID

ITEM NUMBER	QUANTITY	U/M	DESCRIPTION OF ARTICLES	UNIT PRICE QUOTED	TOTALS
10	16.00	EA	new in factory box, Westinghouse no. GMCP030H1C (0841860) 0010 - Kit, contact, size 2, Westinghouse no. 373B331G12 or Hoyt Brand (0863320)	\$ 93.41	\$ 1,495. ⁶⁸
11	36.00	EA	0011 - Contact block, Idac no. BST-010, normally open, for Idac no. ASD320N switch (0863490)	\$ 41.79	\$ 1,504. ⁴⁴
12	4.00	EA	0012 - Relay, triplexor alternator, 120 volt, 3 pump led's, 1 power led, Sta-con Brand no. 009-120-23 (0858010)	\$ 369.33	\$ 1,477. ³²
13	18.00	EA	0013 - Relay, adjustable 13-52 amps, 3 phase, 60/60HZ, Siemens no. 48BTF3S00 (0858230)	\$ 161.72	\$ 2,910. ⁶⁰
14	2.00	EA	0014 - Starter, size 1, 120 volt, 7-1/2 inches high x 3-1/2 inches wide x 4-1/2 inches deep. new in factory box, equals must be same dimensions, Allen Bradley No. 509-BOD (0861010)	\$ 59.36	\$ 118. ⁷²
15	36.00	EA	0015 - Timer, 1 second to 10 minute range, 120 VAC, Idac no. RTE-P1AF20 (0862020)	\$ 37.75	\$ 1,366. ²⁰
16	300.00	EA	0016 - Fork, Sta-con, 22-18 wire range No. 10 hole, insulated, T & B no. 18RA10F (0870660) PSI S22-10V	\$.49	\$ 147. ⁰⁰
17	1.00	EA	0017 - Switch, safety, 200 amp, 120/240 volt, 3 pole, fusible, type 3R enclosure, with hub G.E. No. TG4324RH (0874040)	\$ 317.34	\$ 317. ³⁴
18	16.00	EA	0018 - Nipple, offset, 2 inch, T & B no. 11B5 # 6A7	\$ 29.44	\$ 471. ⁰⁴

DATE: 9/14/2016

Page: 7

INVITATION TO BID FROM JEFFERSON PARISH - continued

BID NO.: 50-00117804

SEALED BID

ITEM NUMBER	QUANTITY	U/M	DESCRIPTION OF ARTICLES	UNIT PRICE QUOTED	TOTALS
19	100.00	EA	(0878610) 0019 - Clamp, channel pipe, for 1/2 inch rigid electrical conduit, with bolt and nut, Unistrut no. P-1111 (0878930) <i>FS - 1100 - A - 1/2 EG</i>	<i>\$ 1.13</i>	<i>113.00</i>
20	12.00	EA	0020 - Nipple, aluminum conduit, 1-1/2 inch x 2 inch long (0881880) <i>1 1/2 x 2 1/2</i>	<i>\$ 5.60</i>	<i>67.20</i>
21	3.00	EA	0021 - Motor electric, 3 HP, 3 Phase, 213T Frame, 230/460VAC, 1200RPM, TEFC, Worldwide no. WWE3-12-213T (0891080) <i>TECO equal # XP0036</i> <i>Specs attached.</i>	<i>\$ 553.41</i>	<i>1660.23</i>



Item 1

REGENERATIVE BLOWERS - PRESSURE SCL K03 / K04 / K05 / K06

MS SERIES

SN 1674-11B 1/2

TECHNICAL CHARACTERISTICS

- Aluminum alloy construction
- Smooth operation
- High efficiency impeller
- Maintenance free
- Mountable in any position
- Recognized TEFC - cURus motor

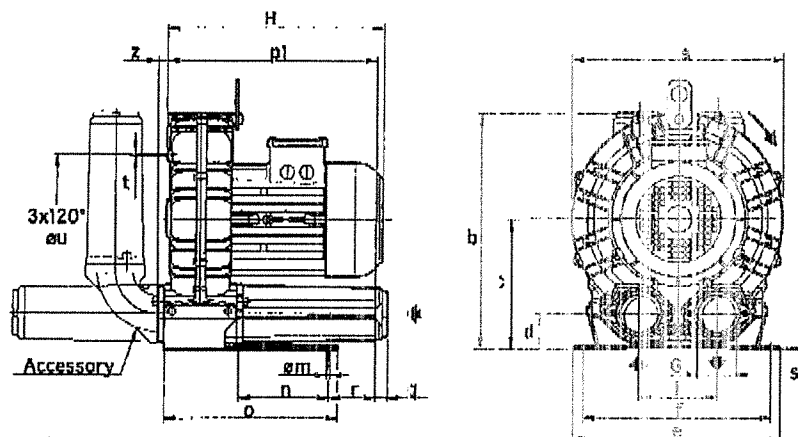
OPTIONS

- Special voltages (IEC 38)
- Surface treatments

ACCESSORIES

- Inlet and/or inline filters
- Additional inlet/outlet silencers
- Safety valves
- Flow converting device
- Optional connectors

Dimensions in inches.
Dimension for reference only.



Model	a	b	c	d	e	f	G	I	m	n	o	p1	r	s	t	u	z	
K03-MS	9.49	10.55	5.79	1.89	9.06	8.07	1"1/4 NPT	3.39	0.39	3.27	5.59	8.07	0.71	2.95	0.16	M6	5.51	0.47
K04-MS	11.22	12.40	6.77	1.93	10.04	8.86	1"1/2 NPT	4.02	0.47	3.74	6.73	8.74	0.71	2.76	0.16	M6	5.89	0.71
K05-MS	12.87	14.37	7.87	2.13	12.60	10.24	2" NPT	4.72	0.59	4.53	10.43	12.60	0.71	3.06	0.16	M8	7.87	0.75
K06-MS	14.80	15.47	8.07	2.13	12.80	11.42	2" NPT	4.92	0.59	5.51	10.71	13.15	0.71	3.55	0.16	M8	9.45	0.75

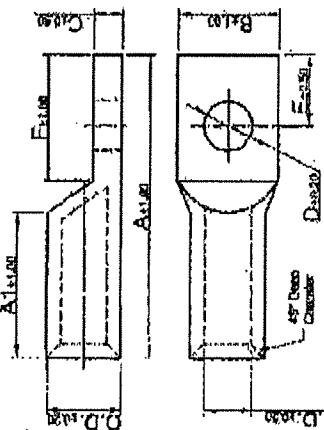
Model	Maximum flow Scfm		Installed power Hp		Maximum differential pressure Δp (In WG)		Noise level Lp dB (A)		Overall dimensions H	Weight
	60 Hz 3500 rpm	50 Hz 2900 rpm	60 Hz 3500 rpm	50 Hz 2900 rpm	60 Hz 3500 rpm	50 Hz 2900 rpm	60 Hz 3500 rpm	50 Hz 2900 rpm		
K03-MS	52	43	3/4	3/4	64	60	62.0	60.0	10.3	24.3
			1	1	95	72	62.3	60.3	12.0	32.0
			1 1/2	1 1/2	58	80	64.8	62.8	11.6	40.3
K04-MS	99	81	2	2	95	100	65.0	63.0	13.78	48.0
			3	-	120	-	65.2	-	13.78	52.5
			2	2	52	70	70.5	68.5	13.20	56.7
K05-MS	156	129	3	3	80	110	70.8	68.8	13.20	80.6
			4	4	120	120	71.1	69.1	14.00	77.2
			3	3	40	85	73.0	71.0	13.80	69.0
K06-MS	216	178	4	4	64	95	73.3	71.3	14.00	82.5
			5 1/2	5 1/2	110	130	73.6	71.6	15.00	85.3
			8 1/5 (2)	-	132	-	73.9	-	15.4	85.3

(1) Noise measured at 1 m distance with inlet and outlet ports piped, in accordance to ISO 3744.

(2) No cURus motor

- For proper use, the blower should be equipped with inlet filter and safety valve; other accessories available on request
- Ambient temperature from +5° to +104°F
- Specifications subject to change without notice.

Aluminum One Hole Compression Lug - AL Series



Drawn - SD
Approved - KU
Material - Aluminum

Title - Aluminum One Hole Compression Lug - AL Series

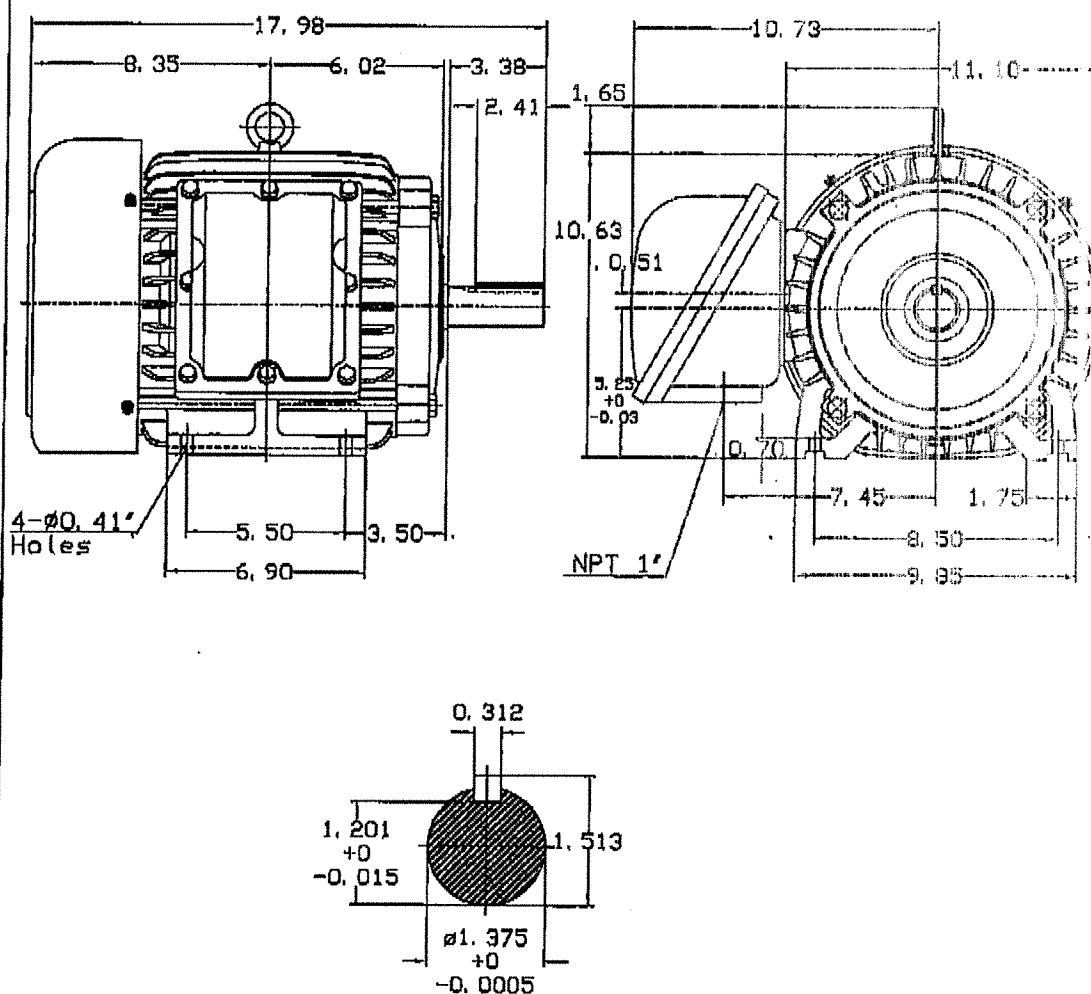


Part Number	Wire Range	Stud Size	Color Code	LD min	LD inches	O.D. min	O.D. inches	A		A1		B		C		D		E		F	
								mm	inches	mm	inches	mm	inches	mm	inches	mm	inches	mm	inches	mm	inches
AL5-14	5 AWG	1/4"	GRAY	5.1000	0.2000	8.6000	0.3386	51.0000	2.0079	21.0000	0.8583	14.0000	0.5689	2.5000	0.1954	0.3000	0.2480	9.5000	0.3750	22.5000	0.8750
AL4-14	4 AWG	3/8"	GREEN	8.4000	0.3500	11.2000	0.4409	58.0000	2.3971	27.0000	1.0664	14.0000	0.5689	3.0000	0.1850	0.3000	0.2480	9.5000	0.3750	22.5000	0.8750
AL4-38	4 AWG	3/8"	GREEN	6.2000	0.2500	11.2000	0.4409	60.7000	2.3568	27.0000	1.0664	16.5000	0.6496	3.0000	0.1765	10.4000	0.4094	9.5000	0.3750	22.5000	0.8750
AL2-14	2 AWG	1/4"	PINK	7.5000	0.3100	13.5000	0.5315	63.0000	2.5000	30.0000	1.2008	16.0000	0.7087	5.0000	0.2165	10.4000	0.4094	9.5000	0.3750	22.5000	0.8750
AL2-38	2 AWG	3/8"	PINK	7.5000	0.3100	13.5000	0.5315	63.0000	2.5000	30.0000	1.2008	16.0000	0.7087	5.0000	0.2165	10.4000	0.4094	9.5000	0.3750	22.5000	0.8750
AL1-14	1 AWG	1/4"	GOLD	8.9000	0.3500	13.5000	0.5315	63.0000	2.5000	30.0000	1.2008	16.0000	0.7283	5.0000	0.2172	6.3000	0.2480	9.5000	0.3750	22.5000	0.8750
AL10-38	10 AWG	3/8"	TAN	9.5000	0.3886	16.0000	0.6256	71.3000	2.8071	30.0000	1.2008	21.0000	0.8465	6.1000	0.2402	10.4000	0.4094	12.7000	0.5000	28.4000	0.9531
AL10-48	10 AWG	1/2"	TAN	9.5000	0.3886	16.0000	0.6256	71.3000	2.8071	30.0000	1.2008	21.5000	0.8465	6.1000	0.2402	12.5000	0.5079	15.0000	0.5890	30.1000	0.9531
AL20-38	20 AWG	3/8"	OLIVE	11.2000	0.4409	17.5000	0.6860	71.3000	2.8071	33.0000	1.2962	23.0000	0.9370	6.1000	0.2402	10.0000	0.4094	12.7000	0.5000	28.4000	1.1161
AL20-48	20 AWG	1/2"	OLIVE	11.2000	0.4409	17.5000	0.6860	71.3000	2.8071	33.0000	1.2962	23.0000	0.9370	6.1000	0.2402	10.4000	0.4094	12.7000	0.5000	28.4000	1.1161
AL30-38	30 AWG	3/8"	RUBY	12.2000	0.4803	19.5000	0.7588	75.2000	3.0000	35.0000	1.4016	25.0000	1.0276	7.1000	0.2785	10.4000	0.4094	12.7000	0.5000	28.4000	1.1161
AL30-48	30 AWG	1/2"	RUBY	12.2000	0.4803	19.5000	0.7588	75.2000	3.0000	35.0000	1.4016	25.0000	1.0276	7.1000	0.2785	10.4000	0.4094	12.7000	0.5000	28.4000	1.1161
AL40-38	40 AWG	3/8"	SLVY	12.2000	0.4803	19.5000	0.7588	75.2000	3.0000	35.0000	1.4016	25.0000	1.0276	7.1000	0.2785	10.4000	0.4094	12.7000	0.5000	28.4000	1.1161
AL40-48	40 AWG	1/2"	SLVY	14.0000	0.5572	21.5000	0.8398	87.1000	3.4251	35.0000	1.4016	29.2000	1.1435	7.3000	0.2874	10.4000	0.4094	14.2000	0.5581	33.2000	1.3711
AL250-48	250 MCM	1/2"	RED	15.0000	0.5806	23.0000	0.8213	88.0000	3.5000	38.1000	1.5000	32.0000	1.1493	8.1000	0.3161	12.5000	0.5079	16.0000	0.6258	33.2000	1.3071
AL300-48	300 MCM	1/2"	BLUE	16.5000	0.6456	25.7000	0.9718	101.0000	4.0000	40.0000	1.5884	34.0000	1.3701	8.5000	0.3463	12.9000	0.5079	16.0000	0.6258	38.1000	1.5000
AL350-48	350 MCM	1/2"	BROWN	18.3000	0.7255	25.4000	1.1161	107.5000	4.2450	40.0000	1.5884	38.0000	1.5197	9.5000	0.3658	12.9000	0.5079	17.5000	0.6860	38.1000	1.5000
AL400-48	400 MCM	1/2"	GREEN	19.3000	0.7588	30.2000	1.1684	107.5000	4.2902	42.0000	1.6884	40.0000	1.6003	10.0000	0.3750	12.9000	0.5079	17.5000	0.6860	38.1000	1.5000
AL500-48	500 MCM	1/2"	PINK	21.0000	0.8386	33.5000	1.1684	118.0000	4.6722	44.0000	1.6884	40.0000	1.6003	10.0000	0.3750	12.9000	0.5079	17.5000	0.6860	38.1000	1.5000
AL500-48	500 MCM	5/8"	PINK	21.0000	0.8386	33.5000	1.1684	118.0000	4.6722	44.0000	1.6884	40.0000	1.6003	10.0000	0.3750	12.9000	0.5079	17.5000	0.6860	38.1000	1.5000
AL500-48	500 MCM	1/2"	PINK	22.4000	0.8973	35.5000	1.2188	120.0000	4.7460	45.0000	1.6884	40.0000	1.6003	10.0000	0.3750	12.9000	0.5079	19.0000	0.7460	38.1000	1.5000
AL500-48	500 MCM	5/8"	BLACK	23.4000	0.9273	36.5000	1.2408	130.0000	5.1161	45.0000	1.6884	40.0000	1.6003	10.0000	0.3750	12.9000	0.5079	19.0000	0.7460	38.1000	1.5000
AL700-48	700 MCM	1/2"	RED	24.0000	0.9573	37.0000	1.2504	135.0000	5.2008	45.0000	1.6884	40.0000	1.6003	10.0000	0.3750	12.9000	0.5079	19.0000	0.7460	38.1000	1.5000
AL700-48	700 MCM	5/8"	RED	26.2000	1.0315	40.0000	1.3594	155.0000	6.1161	45.0000	1.6884	40.0000	1.6003	10.0000	0.3750	12.9000	0.5079	19.0000	0.7460	38.1000	1.5000
AL750-48	750 MCM	5/8"	RED	26.2000	1.0315	40.0000	1.3594	155.0000	6.1161	45.0000	1.6884	40.0000	1.6003	10.0000	0.3750	12.9000	0.5079	19.0000	0.7460	38.1000	1.5000

Item 21

DATE MAY 18, 2011		OUTLINE DIMENSIONS 3-PHASE INDUCTION MOTOR			MOTOR TYPE AEHHXU	
CATALOG NO. XP0036					FRAME NO. 213T	
Pole	HP	KW	Hz	VOLT		Syn. Speed RPM
6	3	2.24	60	230/460		1200
Ins	Rating	Dimension In	Approx Weight		Bearings	
F	CONT.	Inches	187 lbs.		DEI 6308ZZ	NDEI 6306ZZ

Totally Enclosed Fan-Cooled Type Squirrel-Cage Rotor.



NOTE:
1. EXPLOSION PROOF
CLASS I GROUP C, D, A, B
CLASS II GROUP E, F, G

DWN.	J. H. LIANG	11-12-98
CHKD.	C. S. LO	11-23-98
APPD.	Y. B. HUANG	11-23-98

TEC® Westinghouse

DWG NO.
31049H8220:2



doc09247620160916081753

9/16/2016 8:20 AM

Adobe Acrobat D...

337 KB

Request for Taxpayer
Identification Number and Certification

Give form to the
requester. Do not
send to the IRS.

Name (as shown on your income tax return)
D. Reynolds Company LLC

Business name, if different from above
The Reynolds Company

Check appropriate box: ☐ Individual/
Sole proprietor ☒ Corporation ☐ Partnership ☐ Other ☐ Exempt from backup
withholding

Address (number, street, and apt. or suite no.)
2680 Sylvania Cross

City, state, and ZIP code
Fort Worth, TX 76137

Requester's name and address (optional)

List account number(s) here (optional)

Part I Taxpayer Identification Number (TIN)

Enter your TIN in the appropriate box. The TIN provided must match the name given on Line 1 to avoid backup withholding. For individuals, this is your social security number (SSN). However, for a resident alien, sole proprietor, or disregarded entity, see the Part I instructions on page 3. For other entities, it is your employer identification number (EIN). If you do not have a number, see *How to get a TIN* on page 3.

Note, if the account is in more than one name, see the chart on page 4 for guidelines on whose number to enter.

Social security number

--	--	--	--	--	--	--	--	--	--

or

Employer identification number

9	1	2	1	5	8	9	6	9
---	---	---	---	---	---	---	---	---

Part II Certification

Under penalties of perjury, I certify that:

- The number shown on this form is my correct taxpayer identification number (or I am waiting for a number to be issued to me), and
- I am not subject to backup withholding because: (a) I am exempt from backup withholding, or (b) I have not been notified by the Internal Revenue Service (IRS) that I am subject to backup withholding as a result of a failure to report all interest or dividends, or (c) the IRS has notified me that I am no longer subject to backup withholding; and
- I am a U.S. person (including a U.S. resident alien).

Certification instructions: You must cross out item 2 above if you have been notified by the IRS that you are currently subject to backup withholding because you have failed to report all interest and dividends on your tax return. For real estate transactions, item 2 does not apply. For mortgage interest paid, acquisition or abandonment of secured property, cancellation of debt, contributions to an individual retirement arrangement (IRA), and generally, payments other than interest and dividends, you are not required to sign the Certification, but you must provide your correct TIN. (See the instructions on page 4.)

Sign Here Signature of U.S. person  Date **9/27/10**

Purpose of Form

A person who is required to file an information return with the IRS, must obtain your correct taxpayer identification number (TIN) to report, for example, income paid to you, real estate transactions, mortgage interest you paid, acquisition or abandonment of secured property, cancellation of debt, or contributions you made to an IRA.

U.S. person. Use Form W-9 only if you are a U.S. person (including a resident alien), to provide your correct TIN to the person requesting it (the requester), and, when applicable, to:

- Certify that the TIN you are giving is correct (or you are waiting for a number to be issued),
- Certify that you are not subject to backup withholding, or
- Claim exemption from backup withholding if you are a U.S. exempt payee.

In 3 above, if applicable, you are also certifying that as a U.S. person, your allocable share of any partnership income from a U.S. trade or business is not subject to the withholding tax on foreign partners' share of effectively connected income.

Note. If a requester gives you a form other than Form W-9 to request your TIN, you must use the requester's form if it is substantially similar to this Form W-9.

For federal tax purposes, you are considered a person if you are:

- An individual who is a citizen or resident of the United States,
- A partnership, corporation, company, or association created or organized in the United States or under the laws of the United States, or
- Any estate (other than a foreign estate) or trust. See Regulations sections 301.7701-6(a) and 7(a) for additional information.

Special rules for partnerships. Partnerships that conduct a trade or business in the United States are generally required to pay a withholding tax on any foreign partners' share of income from such business. Further, in certain cases where a Form W-9 has not been received, a partnership is required to presume that a partner is a foreign person, and pay the withholding tax. Therefore, if you are a U.S. person that is a partner in a partnership conducting a trade or business in the United States, provide Form W-9 to the partnership to establish your U.S. status and avoid withholding on your share of partnership income.

The person who gives Form W-9 to the partnership for purposes of establishing its U.S. status and avoiding withholding on its allocable share of net income from the partnership conducting a trade or business in the United States is in the following cases:

- The U.S. owner of a disregarded entity and not the entity,