



ST. JOHN THE BAPTIST PARISH SHERIFF OFFICE

Emergency Request for Qualifications (RFQ)
Hurricane Ida Disaster Recovery Damage
Assessment and A/E Services

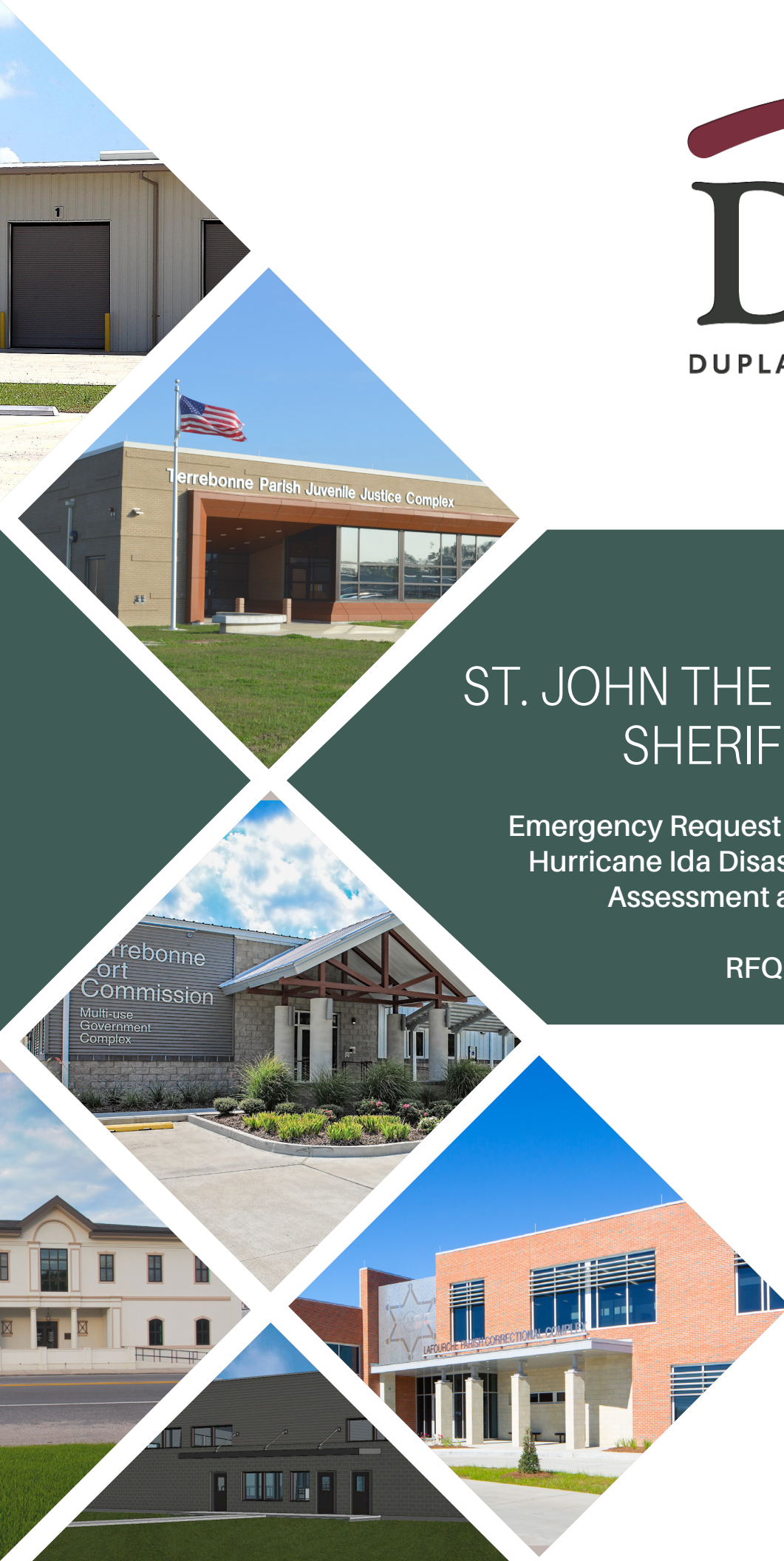
RFQ 2021.1

September 27, 2021

Duplantis Design Group, PC
314 East Bayou Road
Thibodaux, LA 70301

Kyle Domangue, AIA, ncarb
Vice President of Architecture
kdomangue@ddgpc.com
985.447.0090

WWW.DDGPC.COM



QUESTIONS AND COMMENTS MUST BE SUBMITTED NO LATER THAN 11:00 A.M. September 24, 2021.

REQUIRED SIGNATURE PAGE FOR SUBMITTALS

This page, signed by an authorized officer of your Company, must accompany your submittal as the cover page.

I, the undersigned, having carefully examined the Request for Qualifications, propose to furnish services in accordance therewith as set forth in the attached submittal.

I hereby certify that this submittal is genuine and not a sham or collusive submittal, or made in the interests or on behalf of any person not therein named; and I have not directly or indirectly induced or solicited any Submitter or supplier on the above work to put in a sham submittal or any person or corporation to refrain from submitting a submittal; and that I have not in any manner sought by collusion to secure to myself an advantage over any other Submitter(s) or person(s).

In order to induce the Sheriff to consider this submittal, the Submitter irrevocably waives any existing rights which it may have, by contract or otherwise, to require another person or corporation to refrain from submitting a submittal to or performing work or providing supplies to St. John the Baptist Parish Sheriff Office, and Submitter further promises that it will not in the future directly or indirectly induce or solicit any person or corporation to refrain from submitting a bid or submittal to or from performing work or providing supplies to St. John the Baptist Parish Sheriff Office.


Please type or print legibly the information below.

Submitter hereby acknowledges receipt of the RFQ and agrees to Terms and Conditions set forth in this RFQ.

SUBMITTER INFORMATION

Firm Name: Duplantis Design Group, PC (DDG)
Address: 314 East Bayou Road City/State/Zip: Thibodaux, LA 70301
Phone No.: 985-447-0090 Fax No.: _____

AUTHORIZATION TO SUBMIT (must be signed):

By:  9-27-21 Matthew K. Newchurch, PE
Signature Offer Date Printed Name

Primary Contact Person (If other than above):

Name: (same) Phone No: _____ Fax No: _____
Title: _____ E-mail Address: _____

If this submittal is being submitted on behalf of an agent/broker, please complete section below:

Submitted on behalf of: N/A
Phone No: _____ Fax No: _____
E-mail Address: _____



100+

EMPLOYEES

16

STATES LICENSED

3,000+

PROJECTS
COMPLETED

36

LICENSED
PROFESSIONALS

7

OFFICE
LOCATIONS

BRIEF HISTORY

Duplantis Design Group (DDG) is a comprehensive design firm and is exceptionally experienced in managing all aspects of disaster recovery projects. In the 24 years since our founding, our unwavering commitment to client service excellence has allowed us to grow into a multidisciplinary regional firm with over 100 full-time employees and 7 offices. In addition to our design services, we also provide clients with site investigation reports, assisting with property acquisitions, representation at public hearings, permitting, entitlements, and construction administration. From the initial site assessment and due diligence through the project's substantial completion, DDG's team of design professionals pride themselves not only on the technical aspects of a project, but also on our ability to focus on exceeding a clients' expectations and providing top rated client satisfaction.

DDG's vast experience in both renovation and new construction projects for public and private clients, specific personnel's experience with Disaster Recovery projects, as well as the firm's overall staff size and expertise allows DDG to be uniquely qualified for reconstruction and renovation projects. Additionally, our team has a strong reputation of successfully implementing program management and design of local projects through federal funds, including FEMA, LA Recovery Funding, Community Development Block Grant (CDBG), CDBG-DR or FEMA Hazard Mitigation Grant Program (HMGP). Our professionals are well-versed in the guidelines, regulations, compliance requirements and documentation requirements of the National Flood Insurance Program (NFIP), National Fire Protection Association (NFPA), Americans with Disabilities Act Accessibility Guidelines (ADAAG), and International Building Codes during the pre-design, design, and construction phases; specifically as it relates to Administration, Grant Implementation, Records Management, Financial Management, Procurement Methods, Labor Regulations, Civil Rights Regulations, Environmental Review, Acquisition and Relocation, Property Management, Monitoring and Project Close-out.

DDG is a fully licensed civil engineering and architecture firm that is in good standing in the State of Louisiana. We have extensive project experience in with local municipalities and across the gulf south with similar scope items in multiple projects.

WHAT WE DO

CIVIL
ENGINEERING

ARCHITECTURE

LANDSCAPE
ARCHITECTURE

SURVEYING

COASTAL + H&H
ENGINEERINGWETLANDS +
ENVIRONMENTALPROJECT
MANAGEMENT

INTEGRATED DESIGN

DDG offers a "one stop shop" delivery with our architects, civil engineers, landscape architects, and surveyors all working collaboratively under one roof providing the highest level of quality control throughout the project lifecycle.

TECHNOLOGY

DDG uses the latest 3D BIM software for rendering and video capabilities. We have the ability to give our clients an in-depth view of their projects while still in the design phase.

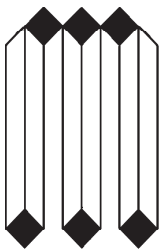


Associated Design Group, Inc. (ADG) an industry leader in Mechanical and Electrical engineering services for business, industry, health care, educational, institutional and government facilities. The size of the organization in addition, has allowed us to develop specialists in the areas of Environmental Services, Fire Protection, Life Safety Code analysis, ADA compliance, Lighting System design, Security & Telecommunications, Energy Management Services, large Power Distribution Systems, Preventative Maintenance Programs, Design/ Monitoring and Project Alternative Delivery/Financing programs.

44

FEMA
Temporary Housing
Facilities

28

Hurricane
Recovery
Projects

M O R P H Y
M A K O F S K Y
I N C O R P O R A T E D
Consulting Engineers

MORPHY, MAKOFSKY, INC. (MMI) is an organization of professional engineers offering a full range of civil, structural, and foundation engineering. Its consulting services include design, studies, estimates, and contract administration of engineering projects. The firm is located in New Orleans, Louisiana, and has provided services throughout most of the United States. MMI currently employs nineteen structural, foundation, and civil engineers; CAD technicians; construction observers; specification writers; and administrators.

The repeated use of MMI by many major architects is a point of pride. Moreover, the firm's dramatic renovations and adaptive reuse of historic structures have transformed entire neighborhoods, reviving commerce while maintaining the neighborhoods' historic ambiance. In order to determine the repair scope of existing structures, our services include field determination of construction, including observation of damages and deficiencies, and subsequent preparation of construction documents which accurately describe repair, replacement or modification of existing framing. Additionally, because the value of repairs and improvements often trigger Code compliance requirements as stated in the IBC, our documents will ensure existing buildings are compliant with the IBC in general.

After the hurricanes of 2005, the City of New Orleans faced the enormous task of rebuilding. One of the first steps was to make sure the buildings in the city were structurally sound. The first week of September 2005, MMI was back in the city providing building assessments and inspections to facilitate the reopening of critical businesses. Some of the first inspections and assessments MMI provided were for the Sheraton Hotel, the W-Hotel French Quarter, Charity Hospital, University Hospital, Harrah's Hotel, Fairmont Hotel, Pan American Life Center, Loyola Church and numerous individual residential inspections. In these assessments, MMI has prepared reports for submittal to insurance agencies, FEMA, and other relevant authorities. These reports and cost assessments have been used in the determination of fund assistance and reimbursements.

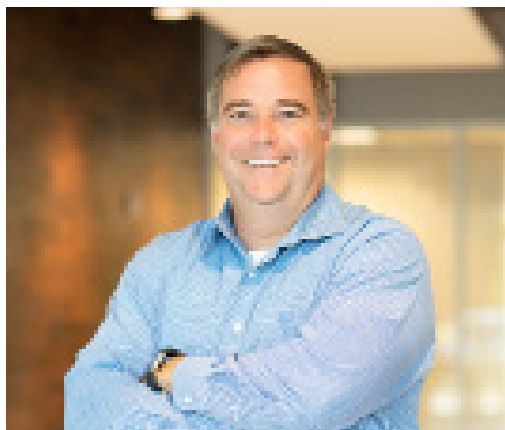
From Cameron Parish, Louisiana to Mobile, Alabama, MMI inspected over 300 businesses and residences affected by the Hurricanes. While some inspection reports were filed directly for the owners, the majority were filed through various insurance agencies which required specific documentation to be included in our reporting. MMI inspected over 40 New Orleans area K-12 schools for the Recovery School District and Orleans School Board.



SECTION 1 | KEY PERSONNEL QUALIFICATIONS
& EXPERIENCE

THOMAS H. BUCKEL, PE

PROJECT ROLE: PRINCIPAL-IN-CHARGE + VICE PRESIDENT OF ENGINEERING



Thomas Buckel joined DDG in 2003 with the commitment from management he would be given the opportunity to be an owner and a difference maker in DDG's growth plan. As a 28 year old professional in 2005, Tommy led DDG to a new location in Covington, LA. Today, under Tommy's leadership, DDG's Covington office has nearly 20 employees and represents a significant percentage of DDG's annual revenue.

He has practiced civil engineering for over two decades throughout the southeast on projects ranging from large site developments, commercial/retail, program management, master planning, and coastal and public infrastructure. In addition to his technical day to day functions, Tommy has assisted clients with scope creation, identifying funding sources and overall project execution.

AREAS OF EXPERTISE

- Program & Project Management
- Master Planning
- Strategic Planning
- Public / Private Partnerships
- Grant Management
- Alternative Funding Sources
- Civil Engineering
- Community Outreach

Below is a listing of other various projects with Mr. Buckel serving as the Lead Engineer and Designer. This exemplifies her knowledge and expertise with working with site development and stormwater:

- St. Tammany Parish Gov't - Program Management OCD/CDBG Drainage
 - Abita River Sub Basin Drainage Improvement
 - Labarre St Drainage Improvements
 - Cypress Bayou Intermediate Detention Pond
 - WestWood Regional Detention Pond Project
 - Lapin Street, Forest Brook, & Quail Creek Detention Pond & Drainage Improv.
 - Bayou Chinchuba Detention Basin
 - Ben Thomas Road Detention Pond
 - Eddins Canal Drainage Improvements
 - Sharp Road Detention Pond and Improvements
- St. Tammany Parish Gov't - Lake Village Drainage Improvements
- St. Tammany Parish Gov't - Abita Nursery Drainage Improvements
- St. Tammany Parish Gov't - Interstate 12 Interchange Enhancements
- St. Tammany Parish Gov't - Brewster Road Extension
- St. Tammany Parish Gov't - W-15 Drainage Improvements
- St. Tammany Parish Gov't - W-14 Drainage Lateral and Water Sewerage Impr.
- City of Hammond - Hammond Square Drive
- Regional Planning Commission - East Laplace Land Use & Transportation Study
- Ochsner at The Grove Site Development & Roundabout
- Ambassador Town Center and Roundabouts
- Stirling Properties - Fremaux Towncenter Development
- Stirling Properties - Riverchase Development and Master Plan
- Stirling Properties - Magnolia Marketplace
- Sitrling Properties - Hammond Square Mall

EDUCATION:

Bachelor of Civil Engineering, 1999
University of Southwestern Louisiana

EXPERIENCE:

22 Years

WITH DDG:

2003 to Present

PROFESSIONAL AFFILIATIONS:

- American Society of Civil Engineers (ASCE)
- International Council of Shopping Centers (ICSC)
- American Council of Engineering Companies (ACEC)
- Louisiana Engineering Society (LES)
- National Council for Examiners for Engineering and Surveying (NCEES)

LICENSES AND CERTIFICATES:

Louisiana, Mississippi, Alabama, Georgia, Kentucky, South Carolina

CONTACT INFO

T: 985.249.6180
E: tbuckel@ddgpc.com

HEATHER R. KLINGMAN, PE

PROJECT ROLE: SENIOR ENGINEER



Mrs. Klingman has 20 years of experience in the design of civil engineering projects. She has been responsible for an abundance of civil engineering projects, some of which include the design of sewer collection systems, potable water distribution systems, gravity and forced drainage systems, pump stations, stormwater management systems, design of new roadways, roadway widening, and improvements/rehabilitation of existing roadways. Many of the projects that Mrs. Klingman has worked on are publicly funded projects falling under the purview of the Louisiana public bid law and/or funded by state and/or federal grants; and Mrs. Klingman therefore has an extensive knowledge base of the requirements unique to public works and grant funded projects.

AREAS OF EXPERTISE

- Program & Project Management
- Master Planning
- Strategic Planning
- Public / Private Partnerships
- Grant Management
- Alternative Funding Sources
- Civil Engineering
- Community Outreach

EDUCATION

B.S. in Civil Engineering, 1999,
University of Southwestern Louisiana

EXPERIENCE

Licensed in 2004

WITH DDG

2001 to Present

LICENSES AND CERTIFICATES

Professional Engineer - Louisiana

CONTACT INFO

T: 985.447.0090

E: hklingman@ddgpc.com

RELEVANT & RELATED PROJECT EXPERIENCE

PUBLIC WORKS ADMINISTRATION BUILDING (LCDBG)

Terrebonne Parish Consolidated Government, Gray, LA

Jeanne Bray, PE, 985.873.6841

Civil Project Manager. Ms. Klingman provided civil engineering design and assisted with submitting required LCDBG application for the funding of this multiple building campus for Terrebonne Parish Consolidated Government. The site included a 16,630 square foot fleet maintenance building for the repair and maintenance of parish-owned vehicles; two modular office buildings for the parish gravity, forced drainage departments, and public works administration; an additional 3,600 square foot central training building; vehicle wash rack and fueling station; and all associated parking, drainage, gravity sewer, and other required utilities.

TOWN HALL IMPROVEMENTS (CDBG)

Town of Golden Meadow, Golden Meadow, LA

name

Senior Project Manager. The Golden Meadow Town Hall Improvements project was completed in August of 2015 and included the design and construction of a new 4,000 square foot pre-engineered metal building storage facility and associated concrete lay-down areas; additional parking, concrete, and aggregate driveways to enhance the parking around Town Hall; and associated drainage, utility, and lighting improvements. DDG assisted the City's Grant Administrator in completing the CDBG funding application. DDG was also responsible for 100% of the Architectural and Civil design, permitting, bidding, and construction administration. All construction documents, specifications, and contract documents, were prepared by DDG in accordance with the CDBG guidelines, including Equal Employment Opportunity, Davis Bacon prevailing wage rates, minority participation goals, etc.

WALLIS AND MIRE SEWER LIFT STATION RENOVATIONS (CWSRF)

Terrebonne Parish Consolidated Government

Greg Bush, LTC USA, Ret., 985.873.6735

Senior Project Manager. This included the rehabilitation of two existing sewer lift stations in Terrebonne Parish. The improvements to both of the pump stations included the removal of all of the existing pumps, force main piping and control panels, demolition of the existing pump houses, addition of a second wet well at each station for added control volume, installation of new duplex submersible pumping systems, force main manifolds, control panels, concrete slabs, and decorative fencing with brick columns. This project was granted under the Louisiana Department of Environmental Quality (LDEQ) Clean Water State Revolving Fund.

HOLLYWOOD DRAINAGE IMPROVEMENTS

Terrebonne Parish Consolidated Government, Houma, LA

Greg Bush, LTC USA, Ret., 985.873.6735

Principal-in-Charge. Hollywood Road Drainage Improvements - The scope of this project was to analyze the existing drainage system along Hollywood Road in an area where there have been historical flooding issues to determine the most cost effective improvements to increase the capacity of the drainage system. After analyzing the existing drainage system and determining the required improvements, DDG prepared the construction documents for the proposed improvements and provided inspection services during construction.

HEATHER R. KLINGMAN, PE

PROJECT ROLE: SENIOR ENGINEER

RELEVANT PROJECT EXPERIENCE CONTINUED

SEWER LIFT STATION RENOVATIONS: ASHLAND NORTH 1, ASHLAND NORTH 2 & ASHLAND SOUTH (LDEQ/CWSRF FUNDED) Terrebonne Parish Consolidated Government -- Terrebonne Parish, LA

Greg Bush, LTC USA, Ret., 985.873.6735

Senior Project Manager. This included the rehabilitation of three existing lift stations in southern Terrebonne Parish. The renovations included the removal of all existing pumps, pump housings, force main piping, control panels, ancillary items, and subsequent replacement with a new duplex submersible pumping system, force main piping, rails system, and control panels. This project was granted under the Louisiana Department of Environmental Quality (LDEQ) Clean Water State Revolving Fund (CWSRF).

SEWER LIFT STATION RENOVATIONS: WOODLAWN RANCH, AMERICAN LEGIONS AND CARLOS (LDEQ/CWSRF)

Terrebonne Parish Consolidated Government - Terrebonne Parish, LA

Greg Bush, LTC USA, Ret., 985.873.6735

Senior Project Manager. The Woodlawn Ranch and Carlos pump stations were both renovated by removing the existing pumps, force main, control panels and pump houses and replacing them with new duplex submersible pumping systems, force mains, control panels, concrete pads, and fencing. This project was granted under the Louisiana Department of Environmental Quality (LDEQ) Clean Water State Revolving Fund (CWSRF).

LAFOURCHE PARISH CORRECTIONAL COMPLEX

Lafourche Parish Sheriff's Office, Thibodaux, LA

Lafourche Parish Law Enforcement District, Sheriff Craig Webre, 985.446.225

Civil Project Manager. Mrs. Klingman provided civil engineering design for this 125,000 square foot, 600 bed correctional complex in Thibodaux, LA, for the Lafourche Parish Sheriff's Office. In addition to housing units ranging from maximum security to dormitory-style layouts, the facility also includes intake/processing functions, property storage, video and contact visitation, medical services, full commercial kitchen and dining area, commercial laundry area, maintenance, and administrative areas. Additionally, this facility is the numerous program spaces, classroom, and meeting spaces designed to offer rehabilitation programs to inmates awaiting trial. Site features include separate public and staff access/parking, secure sallyport, and on-site sewer treatment plant

PARISHWIDE PUMP STATION MITIGATION (HMGP-FUNDED)

Lafourche Parish Government

Archie Chaisson, 985.447.7223

Lead Engineer. DDG was responsible for assisting Lafourche Parish Government with the initial HMGP applications for funding of improvements to various pump stations through-out the parish. Upon approval of the initial application, DDG prepared the phase I deliverables, which included a hydraulics and hydrology investigation for the proposed pump station improvements, along with the design and preparation of the construction plans and specifications for the proposed improvements to the pump stations. The proposed pump station improvements include work such as new metal buildings to protect the existing pumping equipment, elevation of existing electrical equipment to minimum base flood elevation requirements, new trash rakes and access road improvements. As part of the scope of work for this project, DDG worked closely with Lafourche Parish Government staff and the team at GOHSEP through the application and design process to provide all information necessary to get the project funded.

CDBG REHABILITATION OF DRAINAGE STRUCTURES

City of Thibodaux- Thibodaux, LA

Mayor Tommy Eschete, teschete@ci.thibodaux.la.us, 985.446.7218

The scope of this project involved the rehabilitation of drainage structures and sidewalks located within the target area identified as the "Thibodaux Housing Authority Area" (Eagle Drive, Pelican Street, Dove Lane, South Barbier Street, Bobby Street, Louis Streams Circle) of Thibodaux. The cost of construction for this project was approximately \$350,000.

CDBG REHABILITATION OF ROADS

City of Thibodaux- Thibodaux, LA

Mayor Tommy Eschete, teschete@ci.thibodaux.la.us, 985.446.7218

The scope of this project involved the rehabilitation of the roads (Ridgefield Road, Washington Street, General Nichols, Lawrence Street, Bradford Street, Caroline Street, Josephine Street and Henderson Street) located within the target area identified as the "Annex Area" of Thibodaux. The cost of construction for this project was approximately \$270,000.

CDBG REHABILITATION OF WATER AND GAS LINES

City of Thibodaux- Thibodaux, LA

Mayor Tommy Eschete, teschete@ci.thibodaux.la.us, 985.446.7218

The scope of this project involved the rehabilitation of water and gas distribution system lines within the target area identified as the "Annex Area" of Thibodaux.

MATTHEW P. RODRIGUE, MS, PE

PROJECT ROLE: MID-LEVEL ENGINEER



Mr. Rodrigue has worked on many roadway improvement, waste water, drainage, and water distribution projects. He has been involved in the design, permitting, entitlement of infrastructure design, commercial site design applications, and grant funded projects.

AREAS OF EXPERTISE

- Project Management
- Coastal Restoration
- Civil Engineering
- Benefit Cost Analysis

RELEVANT & RELATED PROJECT EXPERIENCE

EDUCATION

Bachelor of Environmental Engineering, 2012 Louisiana State University

Masters in Civil Engineering, 2014, Louisiana State University

EXPERIENCE

Licensed in 2014

WITH DDG

2014 to Present

PROFESSIONAL AFFILIATIONS

Louisiana Engineering Society (LES)

LICENSES AND CERTIFICATES

Louisiana

CONTACT INFO

T: 985.447.0090

E: mattrodrigue@ddgpc.com

WALLIS AND MIRE SEWER LIFT STATION RENOVATIONS (CWSRF)

Terrebonne Parish Consolidated Government

Greg Bush, LTC USA, Ret., 985.873.6735

Project Manager. The scope of this project was the design and renovations to two existing sanitary sewer lift stations. One of the two existing sewer lift stations were renovated by replacing the existing suction-lift pumps with a new duplex submersible pumping units, replacement and elevation of the existing control panel and electrical equipment, and refurbishing the interior of the wet wells. The second sanitary sewer lift station was completely replaced with a new wet well, duplex submersible pumping units and control equipment. The new wet well and pumping system was installed immediately adjacent to the existing wet well.

JUVENILE JUSTICE COMPLEX

Terrebonne Consolidated Government - Gray LA

Greg Bush, LTC USA, Ret., 985.873.6735

Project Manager. This project is a new 32-bed juvenile detention facility for Terrebonne Parish. The facility includes beds, a full kitchen and dining area, indoor gymnasium, classrooms, separate eight bed wings equipped with a day room, shower, full time monitoring station, restrooms, and an outdoor recreation yard. The project also includes concrete pavement with associated curb and gutter, and subsurface drainage for parking spaces, landscaping and irrigation plans, and security fencing. In addition to the above, a sewer service (including the design of an in-line sewer grinder), water, gas and other necessary utility services to the building were designed and coordinated with the local utility companies. Erosion control plans and a site specific storm water pollution prevention plan were also prepared for the project, in compliance with state NPDES regulations. Matt also helped with interviewing and payroll certifications for this project.

PUBLIC WORKS ADMINISTRATION BUILDING (LCDBG)

Terrebonne Parish Consolidated Government, Gray, LA

Jeanne Bray, PE, 985.873.6841

Project Manager. This project consists of a new campus for the Terrebonne Parish Consolidated Government's Public Works Department. Multiple buildings are currently being constructed on a site consisting of a 16,630 square foot fleet maintenance building for the repair and maintenance of parish-owned vehicles. Two other modular office buildings will be provided for Gravity and Forced Drainage departments, and Public Works Administration Department. An additional 3,600 square foot central training room building, vehicle wash rack and fueling station will also be provided on site. Matt also helped with interviewing and payroll certifications for this project.

RESTORE ACT MULTI-YEAR IMPLEMENTATION PLAN ADMINISTRATOR

St. Martin Parish Government

Assistant Project Manager. DDG was hired to assist in coastal planning, preparation, and administration of St. Martin Parish Governments' RESTORE Act Multi-Year Implementation Plan. Scope of the contract includes planning sessions, identification of suitable projects per funding source, and assistance with the preparation and submittal of all required documents

MATTHEW P. RODRIGUE, MS, PE

PROJECT ROLE: MID-LEVEL ENGINEER

RELEVANT & RELATED PROJECT EXPERIENCE CONTINUED

RESTORE ACT MULTI-YEAR IMPLEMENTATION PLAN ADMINISTRATOR

Iberia Parish Government

Assistant Project Manager. DDG was hired to assist in coastal planning, preparation, and administration of St. Martin Parish Governments' RESTORE Act Multi-Year Implementation Plan. Scope of the contract includes planning sessions, identification of suitable projects per funding source, and assistance with the preparation and submittal of all required documents.

SEWER LIFT STATION RENOVATIONS: ASHLAND NORTH 1, ASHLAND NORTH 2 & ASHLAND SOUTH (LDEQ/CWSRF FUNDED)

Terrebonne Parish Consolidated Government -- Terrebonne Parish, LA

Greg Bush, LTC USA, Ret., 985.873.6735

Senior Project Manager. This included the rehabilitation of three existing lift stations in southern Terrebonne Parish. The renovations included the removal of all existing pumps, pump housings, force main piping, control panels, ancillary items, and subsequent replacement with a new duplex submersible pumping system, force main piping, rails system, and control panels. This project was granted under the Louisiana Department of Environmental Quality (LDEQ) Clean Water State Revolving Fund (CWSRF).

SEWER LIFT STATION RENOVATIONS: WOODLAWN RANCH, AMERICAN LEGIONS AND CARLOS (LDEQ/CWSRF)

Terrebonne Parish Consolidated Government - Terrebonne Parish, LA

Greg Bush, LTC USA, Ret., 985.873.6735

Senior Project Manager. The Woodlawn Ranch and Carlos pump stations were both renovated by removing the existing pumps, force main, control panels and pump houses and replacing them with new duplex submersible pumping systems, force mains, control panels, concrete pads, and fencing. This project was granted under the Louisiana Department of Environmental Quality (LDEQ) Clean Water State Revolving Fund (CWSRF).

SYLVIA STREET DETENTION BASIN IMPROVEMENTS

Terrebonne Parish Consolidated Government - Terrebonne Parish, LA

Project Engineer. Mr. Rodrigue assisted with the design, preparations of construction documents, specifications, and opinion of probable cost for a 2,000 cubic yard detention pond to reduce street flooding in Terrebonne Parish. DDG provided construction administration and resident inspection services during construction.

HMGP ELEVATION PROPERTIES

Lafourche Parish Government - Lafourche Parish, LA

Assistant Project Manager/Designer. DDG was hired by Lafourche Parish Government to assist them in the management of the FEMA Hazard Mitigation Grant Program granted to the parish for the elevation of 13 homes located throughout the parish. This project is still open and to date, 4 of the 13 properties have been successfully elevated.



KYLE D. DOMANGUE, AIA, NCARB

PROJECT ROLE: VP OF ARCHITECTURE



Kyle Domangue, AIA currently serves as the Vice President of Architecture at DDG. Prior to DDG, Kyle was a principal for a large firm in Tempe, Arizona. With over 24 years of experience, Mr. Domangue has developed proven management skills and has created a streamlined design approach with a strong emphasis on efficiency while maintaining a high level of quality. His duties include strategic planning, vision and goal setting and large scale management skills with numerous team members. His experience covers several market sectors including office, retail, medical and financial institutions, educational facilities, industrial complexes both inside and outside the fence line, athletic facilities, and single and multi-family residential housing.

AREAS OF EXPERTISE

- Program & Project Management
- Master Planning
- Strategic Planning
- Public / Private Partnerships
- Grant Management
- Alternative Funding Sources
- Quality Architectural Design
- Community Outreach

RELEVANT PROJECT EXPERIENCE

HURRICANE LAURA 2020 HURRICANE ASSESSMENT

- 250 Building Hurricane Assessments through American Institute of Architects (volunteer work)
- Investor Group of Louisiana - SAP Team member assessing damage of 10 projects

TERREBONNE PORT MULTI-USE GOVERNMENT COMPLEX (FEMA)

Terrebonne Port Commission - Houma, LA

David Rabalais, 985.873.6428

Senior Project Manager. Board room with technology for port commission meetings. Office and conference glass interior walls. Textured MDF feature walls. Capital outlay and FEMA funding. New parking lots. New emergency generator. 4,341 SF. \$1.7 million construction cost.

FIREMAN'S SKATE PARK

Terrebonne Consolidated Government - Houma, LA

Chris Pulaski, 985.873.6565, cpulaski@tpcg.org

DDG provided pre-design services, master planning, new restroom facilities and skate park obstacle design for an 8,500 square foot skate park in Houma, Louisiana. The project features adaptive reuse, sustainable design concepts, shipping container rehabilitation, master planning and urban planning. The building features shipping containers salvaged from local landfills to reduce the amount of refuse and uses them in an architectural fashion. The skate park project was very controversial as DDG assisted the client in identifying the best location to encourage the most use from the general public.

RUFUS VINER COMMUNITY CENTER (CDBG)

City of Slidell- Slidell, LA

Sharon Howes, 985.646.4361

Principal-in-Charge. The Rufus Viner Community Center is a gathering place for friends and family to congregate in a well-established residential neighborhood located in downtown Slidell. The building is nestled on a .75 acre site beneath a grove of pine and oak trees adjacent to a local city park. The city government was excited to offer this new project to longtime residents of the city providing space for small weddings, family reunions and other similar gatherings. The project was completed in March 2012 with a total construction cost of \$610,000.

EMERGENCY OPERATIONS CENTER

St. Charles Parish Government, Hahnville, LA

V.J. St. Pierre, Jr. - 985.783.5000

Senior Project Manager. St. Charles Parish Government contracted the architectural and civil engineering design services of DDG for a 12,950 square foot Emergency Operations Command Center. The project contains the operations center, conference room, communications center, media room, offices, sleeping quarters, commercial kitchen, restroom facilities and associated support spaces in a structure that is designed to withstand 200 mph winds. The project contains dual generators and fuel tanks for redundant emergency power in accordance with NFPA 1221 standards.

OFFICE LOCATION

Thibodaux, LA

EDUCATION

Bachelor of Architecture, 1993
Louisiana State University

EXPERIENCE

Licensed in 2001

WITH DDG

2010 to Present

PROFESSIONAL AFFILIATIONS

American Institute of Architects (AIA)
National Council of Architectural
Registration Board (NCARB)

LICENSES AND CERTIFICATES

Louisiana

MILITARY EXPERIENCE

Tank Commander
Operation Desert Storm - 1991
National Defense Metal
Louisiana War Cross - ARCOM
Honorable Discharge

CONTACT INFO

T: 985.447.0090
E: kdomangue@ddgpc.com





KYLE D. DOMANGUE, AIA, NCARB
PROJECT ROLE: VP OF ARCHITECTURE

RELEVANT PROJECT EXPERIENCE CONTINUED

BAYOU L'OURSE COMMUNITY CENTER

Assumption Parish Policy Jury - Bayou L'Ourse, LA

Martin Triche, 985.369.7435

Senior Project Manager. The Assumption Parish Police Jury contracted with DDG for the architectural and civil engineering design of a 7,000 square foot community center in Bayou L'Ourse, Louisiana. The center contains a multipurpose area, lobby, public restrooms, conference room and office/storage space. The building accommodates programs for the local recreation district and the Council on Aging, as well as local events such as club meetings and wedding receptions. This building also serves as a staging area for supplies to assist in recovery after future storm events. This project was funded by the Louisiana Recovery Authority as a result of Hurricane Gustav.

JUVENILE JUSTICE COMPLEX

Terrebonne Consolidated Government - Gray LA

Greg Bush, LTC USA, Ret., 985.873.6735

Senior Project Manager. This project is a new 32 bed juvenile detention facility for Terrebonne Parish. The facility includes 24 beds for boys and eight beds for girls, a full kitchen and dining area, indoor gymnasium, three classrooms, four separate eight bed wings equipped with a day room, shower, full time monitoring station, restrooms, and an outdoor recreation yard. The project also includes concrete pavement with associated curb and gutter, and subsurface drainage for 30 parking spaces, landscaping and security fencing. In addition to the above, a sewer service (including the design of an in-line sewer grinder), water, gas and other necessary utility services to the building were designed and coordinated with the local utility companies. Erosion control plans and a site specific storm water pollution prevention plan were also prepared for the project, in compliance with state NPDES regulations.

HOUMA INTERPRETIVE CENTER

Houma Area Convention and Visitors Bureau - Gray, LA

Sharon Alford, 985.868.2732

Principal-in-Charge. The Interpretive Center is a small, 3,733 square foot interpretive space that uses the latest visual technology similar to educate, and advertise all of the remarkable things to do in the tri-parish area for travelers along Hwy 90. It is intended to be a very architectural attraction for travelers along the highway and to express a modern image that is cutting edge and industrial.

DEPARTMENT OF PUBLIC WORKS BUILDING

Forte and Tablada - Walker, LA

Robert Badeaux, 225.665.1021

Senior Project Manager. The scope of work for this project was to provide architectural and structural design and coordinate all mechanical, electrical, plumbing and civil engineering services for two separate buildings on a six acre site. Building 1 is the department of public works building which will consists of approximately 4,200 square feet of office, training and kitchen facilities. Building #2 is a 1,300 square feet maintenance facility which includes equipment storage and a wash rack.

TERREBONNE BAYOU REGION COLD STORAGE FACILITY (LCDBG)

Terrebonne Parish Economic Development Authority - Houma, LA

Senior Project Manager. The Terrebonne Parish Economic Development Authority contracted with DDG for architectural and civil engineering design services for a 43,000 square foot cold storage facility. The project will serve the Bayou Region parishes of Assumption, Lafourche, St. Mary and Terrebonne by providing safe harbor, reasonably priced cold storage and processing facilities in close proximity to coastal operations. The project is currently on hold with a budget of \$4,700,000 funded by grants through the Office of Community Development and LCDBG.

DEPARTMENT OF PUBLIC WORKS ADMINISTRATION BUILDING (LCDBG)

Terrebonne Parish Economic Development Authority - Houma, LA

Jeanne Bray, PE, 985.873.6841

This is a LCDBG funded project consisting of a new campus for the Terrebonne Parish Consolidated Government's Public Works Department. Multiple buildings were constructed on site including a 16,630 square foot fleet maintenance building for the repair and maintenance of parish-owned vehicles; two modular office buildings for the parish gravity, forced drainage departments, and public works administration; an additional 3,600 square foot central training building; vehicle wash rack and fueling station; and all associated parking, drainage, gravity sewer, and other required utilities. As part of the scope of this project, DDG was also responsible for completing and assisting Terrebonne Parish with the submittal of the required LCDBG applications for the funding of the project and the subsequent coordination with OCD during the application review and subsequent design and construction.

DDG STEPHEN VIGUERIE, AIA, NCARB, LEED AP, BD+C

PROJECT ROLE: PRINCIPAL + SENIOR PROJECT ARCHITECT



AVAILABILITY

Throughout duration of Project

EDUCATION

Bachelor of Architecture, 1992,
Louisiana State University

EXPERIENCE

Licensed in 1998

WITH DDG

1998 to Present

PROFESSIONAL AFFILIATIONS:

- American Institute of Architects (AIA)
- National Council of Architectural Registration Board (NCARB)
- Leadership in Energy and Environmental Design Accredited Professional (LEED AP, BD+C)

REGISTRATIONS:

- Licensed Architect
- Louisiana, #5132

CONTACT INFO

T: 985.447.0090
E: sviguerie@ddgpc.com

In 1998 Stephen joined DDG as the first architect on staff. DDG was originally founded as a regional civil engineering firm and Stephen was initially hired as a project manager with the intention of creating an architectural division. At that time, he worked on all aspects of large commercial retail projects including site and utility design, permitting, and construction administration. In 2000, he played a key role in the development of DDG's Architectural Division.

Currently, Stephen is a Principal in the firm and works out of our Thibodaux office. His role involves the management of design teams, business development, and contract administration for a multitude of project types in the public and private sectors.

AREAS OF EXPERTISE

- Project Management
- Consultant Coordination
- Construction Administration
- Sustainable Design

RELEVANT PROJECT EXPERIENCE

LAFOURCHE PARISH HOUSING AUTHORITY

Hurricane Damage Assessments - DDG prepared independent cost verifications at multiple sites. This included assessment, re-reporting and cost estimation of damages at five sites throughout Lafourche Parish and was completed in June 2009.

HOUMA-TERREBONNE HOUSING AUTHORITY

• **Senator Circle Renovations and Modernization** - The project at Senator Circle to 10 duplex buildings included complete renovation including new flooring, gypsum wall partitions, painting, HVAC, electrical, plumbing, doors and windows. The project was completed in June 2014 with a cost of \$903,000.

• **Hurricane Damage Assessments** - HUD required independent damage assessments and cost verifications for the Bayou Towers site. The project was completed in June 2009.

• **Bayou Towers and Senator Circle Physical Needs Assessment** - DDG did a full assessment of 300 units at each site to determine items to be repaired/replaced, priority for repairs and associated costs. This was completed in early 2003.

HURRICANE DAMAGE ASSESSMENTS AND REPAIRS (FEMA)

Lafourche Parish School Board - Mr. Viguerie was the client contact and overall oversight for this project which consisted of renovations to 18 school and administration buildings at different sites throughout the Thibodaux area for the Lafourche Parish School Board as a result of damages caused by hurricanes Gustav and Ike in 2008. This project was coordinated with FEMA for reimbursement of LPSB monies spent. The project's cost was \$413,500 (originally budgeted at \$508,000) and completed in August 2010.

AGNES L. BAUDUIT ELEMENTARY SCHOOL REFURBISHMENT

New Orleans Recovery School District

This project involves the renovation of a historic structure built in 1912. The scope of this project includes the repair and restoration of existing masonry and plaster, refurbishment of existing windows, replacement of exterior doors and frames, replacement of existing roof, new chilled water HVAC system and ductwork, replacement of existing lights, renovations to the existing kitchen area, a new dumpster enclosure, and minor modifications to the existing sprinkler system.

VILLAGE DE L'EST ELEMENTARY SCHOOL REFURBISHMENT

New Orleans Recovery School District

This project is currently in the Construction administration phase. The scope includes sealing all exterior wall penetrations, replace the damaged soffit with new metal soffit panels, replace all plastic window glazing with glass, replace exterior doors and hardware, replace kitchen equipment, repaint all interior doors and frames, repaint interior CMU walls, replace damaged ceiling tile, replace toilet partitions, replace plumbing fixtures in restrooms and kitchen, replace existing multi-zone air handling units with new custom VAV air handling units and controls, and limited replacement of lighting and power distribution systems.



STEPHEN VIGUERIE, AIA, NCARB, LEED AP, BD+C
PROJECT ROLE: PRINCIPAL + SENIOR PROJECT ARCHITECT

RELEVANT PROJECT EXPERIENCE CONTINUED

EMERGENCY REPAIRS TO E.D. WHITE AND VANDEBILT CATHOLIC HIGH SCHOOLS (FEMA)

Diocese of Houma- Thibodaux

The Diocese of Houma-Thibodaux contracted with DDG to facilitate repairs to their gymnasiums as a result of Hurricane Gustav. DDG presented multiple options to the diocese along with the costs for each scenario. Once the scope of work was established, DDG assisted in "fast-tracking" the design and construction of the repairs. The final part of this project involved documentation of the repairs and costs to FEMA in order for schools to be reimbursed for the cost of repairs. This project was funded in 2009 and were completed in July 2009. The repairs did not have an initial budget since it was emergency repairs. The costs were documented by labor and materials and were then reimbursed by FEMA.

HURRICANE SAFE ROOM

Assumption Parish Policy Jury - Napoleonville, LA

Erin Watson - Economic Development Director, 985.369.7435

Principal-in-Charge. DDG is under contract with Assumption Parish for the design of a new Hurricane Safe Room for Assumption Parish. The building is designed in accordance with FEMA 361 and will be able to withstand 200 mph winds. The building will be located adjacent to the existing public works building. The total square footage of the building is 1,344 square feet and includes a bunk room, restroom/showers and laundry room for 22 occupants. The project is grant funded, and the building is currently under construction at an approximate cost of \$450,000. Construction was complete at the end of 2016.

ASSUMPTION PARISH COMMUNITY CENTER (OCD/DRU)

Assumption Parish Policy Jury - Napoleonville, LA

Erin Watson - Economic Development Director, 985.369.7435

Principal-in-Charge. Mr. Viguerie was responsible for the client coordination, CDBG application, sub-consultant coordination and overall management of the project. The Assumption Parish Community Center is a 33,800 square foot multipurpose building designed to handle local club meetings, as well as large public gatherings. The structure is designed to withstand category five hurricane winds. The project was funded by the Louisiana Recovery Authority with OCD/DRU funds.

ASSUMPTION PARISH ADMINISTRATION BUILDING (LA RECOVERY)

Assumption Parish Policy Jury - Napoleonville, LA

Erin Watson - Economic Development Director, 985.369.7435

Principal-in-Charge. The Assumption Parish Police Jury contracted with DDG for the architectural design of a 10,800 square foot administration building in Napoleonville, LA. The first floor of the building houses the police jury meeting room and executive conference room, as well as the mayor's office and support spaces. The second floor houses office space for all remaining parish departments. This project is being funded by the Louisiana Recovery Authority.

LAFOURCHE PARISH COMMUNITY & RECREATION CENTER (LA RECOVERY)

Lafourche Parish Government - Thibodaux, LA

Jack E. Plaisance, Picciola and Associates - 985.632.5786

Principal-in-Charge. Lafourche Parish Government for full architectural design and site civil to design a new community and recreation center in Lockport, LA. The building is a 15,000 square foot multipurpose facility which is currently under construction with a budget of \$4 million. The main gym space can accommodate high school regulation volleyball and basketball with seating for 300 people. In a cross court arrangement there will be two regulation volleyball courts with seating for 150 people and two practice basketball courts without seating. A full service catering kitchen will also be provided, and the structure will have emergency power to run the entire facility. The center will be able to handle local club meetings as well. This project is being funded by the Louisiana Recovery Authority as a result of Hurricane Gustav.

ASSUMPTION PARISH JAIL ADDITIONS (CDBG)

Assumption Policy Jury - Napoleonville, LA

John Boudreaux, 985.369.7386

Principal-in-Charge. Duplantier Design Group completed an 8,468 square foot 80 bed addition to the existing Assumption Parish Jail. The dormitory is divided into two separate dormitory pods each containing 40 beds for work release inmates. The site layout also allows for the addition of another dorm building in the future. The building is equipped with an emergency generator capable of running the dormitory addition, as well as any future buildings. This project was administered by the Louisiana Recovery Authority and was subject to CDBG regulations, including Davis Bacon and Buy America.

BAYOU L'OURSE COMMUNITY CENTER

Assumption Parish Policy Jury - Bayou L'Ourse, LA

Martin Triche, 985.369.7435

Principal-in-Charge. The Assumption Parish Police Jury contracted with DDG for the architectural and civil engineering design of a 7,000 square foot community center in Bayou L'Ourse, Louisiana. The center contains a multipurpose area, lobby, public restrooms, conference room and office/storage space. The building accommodates programs for the local recreation district and the Council on Aging, as well as local events such as club meetings and wedding receptions. This building also serves as a staging area for supplies to assist in recovery after future storm events. This project was funded by the Louisiana Recovery Authority as a result of Hurricane Gustav.



DDG MICHAEL BOURGEOIS

PROJECT ROLE: ARCHITECTURE PROJECT MANAGER



With nearly 30 years of architectural experience, Mike has provided quality design and construction services for a wide variety of clients, in a wide variety of industries (primary/secondary/educational facilities, commercial, residential, industrial, governmental) and for many diverse types of projects with varying complexities (private business, banks, retail, restaurants, fuel stations, car dealerships, medical facilities, dental offices, retirement homes, museums, single and multi-family housing, religious facilities, multiple types of industrial facilities, manufacturing, athletic facilities, recreational parks, state parks, etc. He has extensive experience working with HUD and disaster relief programs.

AREAS OF EXPERTISE

- Program & Project Management
- Architectural Design
- HUD Funding

RELEVANT & RELATED PROJECT EXPERIENCE

MORGAN CITY HOUSING AUTHORITY

MCHA - Renovations to Brownell Site - Morgan City, LA

In January 2010, the Morgan City Housing Authority contracted with DDG to provide architectural design services to renovate the interior of approximately (11) 2-story dwelling units damaged during Hurricanes Gustav and Ike. The \$496,000 project budget is being funded through a grant from the American Recovery and Reinvestment Act (ARRA). Due to ARRA requirements, a rapid completion of documents was required.

ST. CHARLES HOUSING AUTHORITY

2009 and 2010 Capital Funds Program Renovations to Housing Units

In February 2011, the St. Charles Parish Housing Authority contracted with DDG to provide architectural design services to renovate the interior of approximately five dwelling units. The scope of work included completely or partially gutting and renovating unit interiors, including electrical service upgrades, HVAC and plumbing upgrades. The scope also included replacing exterior doors and windows. The project cost was \$230,000 and completed in February 2012.

HOUMA-TERREBONNE HOUSING AUTHORITY

Bayou Towers Roof Repairs

The project consisted of the repair/replacement of temporary roof patching and associated flash-ing with new modified bitumen roofing and prefinished metal flashing, along with the repair of the existing lightning protection system. This project was completed in September 2009. The project was budgeted at \$148,500 but came in under budget during bidding at \$101,532.

Hurricane Damage Assessments - HUD required independent damage assessments and cost verifications for the Bayou Towers site. The project was completed in June 2009.

PREVIOUS WORK EXPERIENCE

HOUMA-TERREBONNE & LAFOURCHE PARISH HOUSING AUTHORITY

City of Thibodaux Housing Authority

CGP and CIAP Funded Projects - Mr. Bourgeois completed various projects funded through the Comprehensive Grant Program (CGP) and Comprehensive Improvement Assistance Program (CIAP) funding sources. The projects included: rehabilitation/mod-ernization of dwelling units; roofing evaluations and replacements of dwelling units; installation of energy efficient windows of dwelling units; plumbing repairs/replacement; and conversion of existing dwelling units into a daycare center.

St. James Parish Housing Authority Houma Terrebonne Housing Authority Lafourche Parish Housing Authority City of Thibodaux Housing Authority

Various projects funded through Comprehensive Grant Program (CGP) and Comprehensive Improvement Assistance Program (CIAP) funding sources. The projects consisted of Rehabilitation / Modernization of Dwelling Units, Roofing Evaluations and Replacements of Dwelling Units, and Needs Assessments of Dwelling Units.

AVAILABILITY

Throughout duration of Project

EDUCATION

Bachelor of Architecture, 1991
Louisiana State University

EXPERIENCE

Licensed in 1998

WITH DDG

2007 to Present

LICENSES & CERTIFICATES

Architect
Louisiana - 5225

CONTACT INFO

T: 985.447.0090
E: mbourgeois@ddgpc.com

DDG CHAD DANOS

PROJECT ROLE: LANDSCAPE ARCHITECT



A leader in his field, Chad Danos approaches each challenge with conviction inspired by his South Louisiana heritage and work ethic. Chad has an intimate awareness of the rich cultural differences and shared values throughout the state, offering Louisiana clients a local and cultural perspective that he utilizes to create successful and regionally appropriate designs. Chad offers a set of skills to the DDG portfolio of planning, design and implementation of outdoor environments that provide added value to our client's projects. Combining his nearly three decades of project and leadership experience with his passion for functional, yet sustainable design, Chad has the ability to design projects that make sense for the community.

Chad graduated in 1990 with a Bachelor of Landscape Architecture from Louisiana State University. He is a Registered Landscape Architect in six states including Louisiana, and an active member of the American Society of Landscape Architects; serving as National President from 2015-2016, Council of Landscape Architects Registration Board, Louisiana Urban Forestry Council, and Irrigation Association.

AVAILABILITY

Throughout duration of Project

EDUCATION:

Bachelor of Landscape Architecture,
1990, Louisiana State University

EXPERIENCE:

Licensed in 1996

WITH DDG:

2011 to Present

PROFESSIONAL AFFILIATIONS:

- American Society of Landscape Architects (ASLA)
- Council of Landscape Architects Registration Board (CLARB)
- Louisiana Urban Forestry Council (LUFC)
- Irrigation Association (IA)

LICENSES AND CERTIFICATES

Landscape Architecture -
Louisiana #21-0432

Landscape Horticulturist -
Louisiana #21-3203

CONTACT INFO

T: 225.751.4490

E: cdanos@ddgpc.com

Chad has collaborated on several award-winning designs including Iberville Parks & Recreation Framework Guide - Louisiana Chapter ASLA Merit Award Lafourche Parish Multiuse Path Master Plan - Louisiana Chapter ASLA Merit Award Episcopal High School Rain Garden - Louisiana Chapter ASLA Merit Award North Boulevard Town Square - Louisiana Chapter ASLA Honor Award East Baton Rouge Stormwater BMP Manual - Louisiana Chapter ASLA Merit Award Louisiana Speaks: Regional Plan - Louisiana Chapter ASLA Award of Excellence

AREAS OF EXPERTISE

- Project Management
- Master Planning & Design
- Sustainable Design
- Grant Writing / Alternative Funding

RELEVANT & RELATED PROJECT EXPERIENCE

Disaster Recovery Projects

Iberville Parks & Recreation Assessment, Outreach, and Guidance

Louisiana SCORP (State-wide Comprehensive Outdoor Recreation Plan)

Louisiana SPEAKS: Regional Vision (Hurricanes Katrina/Rita)

Louisiana SPEAKS: Planning Toolkit (Hurricanes Katrina/Rita)

FEMA Assessment Teams: Palm Beach & Dade Counties, Florida
(Hurricane Andrew)

FEMA Partnership Opportunities Summit (Hurricanes Katrina/Rita)

FEMA Long Term Community Recovery Team's Parish Planning Meetings
(Hurricanes Katrina/Rita)

FEMA's Public Assistance Program

City of Crowley Urban Forestry Management Plan

City of Lockport Urban Forestry Management Plan

Community Design:

Assumption Community Center - Napoleonville, LA

Lafourche Parish Community Center - Lockport, LA

John Alario Jr Sports Complex - Westwego, LA

Moncus Park - Lafayette, LA

Bayou-Side Park - Napoleonville, LA

Nicholls State University Bayou-Side Park - Thibodaux, LA

MARK BARRILLEAUX

PROJECT ROLE: SENIOR CAD



As a civil 3D designer and CAD standards manager, Mr. Barrilleaux works on many municipal projects for numerous jurisdictions. He has been involved in the civil 3D design of hundreds of infrastructure design and commercial site design jobs, including CDBG-funded projects.

RELEVANT PROJECT EXPERIENCE

CDBG REHABILITATION OF DRAINAGE STRUCTURES

City of Thibodaux- Thibodaux, LA

Mayor Tommy Eschete, teschete@ci.thibodaux.la.us, 985.446.7218

CAD Manager. The scope of this project involved the rehabilitation of drainage structures and sidewalks located within the target area identified as the "Thibodaux Housing Authority Area" (Eagle Drive, Pelican Street, Dove Lane, South Barbier Street, Bobby Street, Louis Streams Circle) of Thibodaux. The cost of construction for this project was approximately \$350,000.

CDBG REHABILITATION OF ROADS

City of Thibodaux- Thibodaux, LA

Mayor Tommy Eschete, teschete@ci.thibodaux.la.us, 985.446.7218

CAD Manager. The scope of this project involved the rehabilitation of the roads (Ridgefield Road, Washington Street, General Nichols, Lawrence Street, Bradford Street, Caroline Street, Josephine Street and Henderson Street) located within the target area identified as the "Annex Area" of Thibodaux. The cost of construction for this project was approximately \$270,000.

LAFORCHE PARISH GOVERNMENT (CDBG)

Delta Woods Drainage Improvements

CAD Designer. The scope of this project was to improve the hydraulic capacity of the Delta Woods Drainage Ditch located in Lockport, LA. Improvements included the placement of approximately 2,000 linear feet of subsurface culverts and multiple catch basins beginning at the point of the existing drainage system and ending at the Forty Arpent Canal. This project was funded through the CDBG-DRU program. The total cost of this system was approximately \$517,000.

JUVENILE JUSTICE COMPLEX (CDBG)

Terrebonne Consolidated Government - Gray LA

Greg Bush, LTC USA, Ret., 985.873.6735

CAD Designer. This project is a new 32-bed juvenile detention facility for Terrebonne Parish. The facility includes beds, a full kitchen and dining area, indoor gymnasium, classrooms, separate eight bed wings equipped with a day room, shower, full time monitoring station, restrooms, and an outdoor recreation yard. The project also includes concrete pavement with associated curb and gutter, and subsurface drainage for parking spaces, landscaping and irrigation plans, and security fencing. In addition to the above, a sewer service (including the design of an in-line sewer grinder), water, gas and other necessary utility services to the building were designed and coordinated with the local utility companies. Erosion control plans and a site specific storm water pollution prevention plan were also prepared for the project, in compliance with state NPDES regulations. Matt also helped with interviewing and payroll certifications for this project.

PUBLIC WORKS ADMINISTRATION BUILDING (CDBG)

Terrebonne Parish Consolidated Government, Gray, LA

Jeanne Bray, PE, 985.873.6841

CAD Designer. This project consists of a new campus for the Terrebonne Parish Consolidated Government's Public Works Department. Multiple buildings are currently being constructed on a site consisting of a 16,630 square foot fleet maintenance building for the repair and maintenance of parish-owned vehicles. Two other modular office buildings will be provided for Gravity and Forced Drainage departments, and Public Works Administration Department. An additional 3,600 square foot central training room building, vehicle wash rack and fueling station will also be provided on site.

EDUCATION

Associate of Applied Science, 2005
L.E. Fletcher Technical College

WITH DDG

2005 to Present

EXPERIENCE

16 Years

CORY MACMENAMIN

PROJECT ROLE: SURVEYOR



AVAILABILITY

Throughout duration of Project

EDUCATION

Associates in Land Surveying, 2008,
Community College of Southern
Nevada

Bachelors in Business Management,
2019, Southeastern University

Survey and Mapping, Fall 2020,
University of Wyoming

EXPERIENCE

20 + Years

WITH DDG

2019 to Present

LICENSES AND CERTIFICATES

107 Pilot

CONTACT INFO

T: 985.249.6180

E: cmacmenamin@ddgpc.com

The DDG Surveying Division is managed from DDG's Covington office by Cory MacMenamin. Having surveyed with his father since he was a boy, he has experienced many different facets of the industry, and he appreciates the historical significance of the survey profession and the challenges it faces as technological advancements shape its future. He has performed many different types of surveys ranging across multiple states and specialties. He has also worked on master planning, industrial, commercial, and residential projects throughout the state of Louisiana as well as projects in Mississippi, Alabama, Florida and Nevada.

Providing a leading-edge approach, Cory specializes in sUAS (small Unmanned Aircraft Systems) survey technology solutions. By utilizing the power of drone technologies, he provides a significant benefit to his clients by providing accurate and efficient site evaluations and insights, which can assist with quick and informed decision making during the planning phase. Cory believes in utilizing the latest and most efficient methods for collecting and staking data points for property and topographic surveys. The surveying division lead is committed to staying at the forefront of technology and using the latest GPS, Remote Sensing, Robotic Total Station, and Scanning Stations to ensure that our clients receive accurate and precise data. With 20+ years of experience and a passion for surveying, Cory provides the highest level of client satisfaction on every project.

AREAS OF EXPERTISE

- Topographic Surveying
- Hydrographic Surveys
- Drone Licensed Pilot

RELEVANT PROJECT EXPERIENCE

RIENZI DRAINAGE STUDY

North Lafourche Conservation Levee District

Survey Crew Lead. DDG's survey team completed a topographic survey of drainage canals and structures for a drainage basin outside of Thibodaux.

NICHOLLS STATE UNIVERSITY DRAINAGE STUDY

North Lafourche Conservation Levee District

Survey Crew Lead. DDG's survey team located and determined inverts and pipe sizes for the Nichols State Campus underground drainage system. Drainage ditches were also cross sectioned at critical locations.

LEIGHTON DRAINAGE STUDY

North Lafourche Conservation Levee District

Survey Crew Lead. DDG's survey team completed a topographic survey of drainage canals and structures for a drainage basin southwest of Thibodaux.

BAYOU LAFOURCHE WEIR REMOVAL

Lafourche Parish Fresh Water District

Survey Crew Lead. DDG completed a hydro survey of a section of Bayou Lafourche for the Weir Removal Project. DDG mobilized a drone survey boat to collect accurate readings of water bottom elevations; because it is unmanned, our operators can safely and quickly survey a body of water without the need of a launch or ramp to enter the water. Used in combination with our laser scanning capabilities, DDG provided a fully integrated three-dimensional map of the site both above ground and under water.

HIGHWAY TRANSPORT FACILITY

Highway Transport - Geismar, LA

Survey Crew Lead. Survey team completed ALTA and topographic survey for this new 33,665 sq ft facility and warehouse utilizing a combination of R.T.K GPS and Robotic Total stations to complete within the required time frame and to accuracy standards required for ALTA surveys.

JEFFERSON ISLAND SUBSIDENCE MONITORING

Survey Crew Lead. DDG's survey team is in the process of creating a high accuracy reference network (H.A.R.N.) around Lake Peigneur in Iberia and Vermilion Parishes in order to monitor potential subsidence of the salt dome under the lake.

DENNIS GOWIN, PLS

PROJECT ROLE: PROFESSIONAL LAND SURVEYOR



Mr. Gowin is a Professional Land Surveyor with over 40 years' experience in the surveying profession and nearly 30 years as a licensed Surveyor. Experience with all aspects of subdivision development from zoning and preliminary plat approval to construction layout and final platting. Supervising professional and project manager for numerous boundary, topographic and ALTA/NSPS surveys. Supervised and calculated the construction layout for a number of commercial projects. He is familiar with the Louisiana Standards of Practice and ALTA/NSPS requirements and is proficient in many software programs such as AutoCAD and Carlson and vast experience using RTK and static GPS.

AREAS OF EXPERTISE

- Topographic Surveys
- Title Review
- Processing GPS Data

RELEVANT PROJECT EXPERIENCE

RIENZI DRAINAGE STUDY

North Lafourche Conservation Levee District

Supervising Surveyor. DDG's survey team completed a topographic survey of drainage canals and structures for a drainage basin outside of Thibodaux.

LEIGHTON DRAINAGE STUDY

North Lafourche Conservation Levee District

Supervising Surveyor. DDG's survey team completed a topographic survey of drainage canals and structures for a drainage basin southwest of Thibodaux.

NICHOLLS STATE UNIVERSITY DRAINAGE STUDY

North Lafourche Conservation Levee District

Supervising Surveyor. DDG's survey team located and determined inverts and pipe sizes for the Nichols State Campus underground drainage system. Drainage ditches were also cross sectioned at critical locations.

BAYOU LAFOURCHE WEIR REMOVAL

Lafourche Parish Fresh Water District

Supervising Surveyor. For this project DDG's survey team completed a topographic survey of Bayou Lafourche through downtown Thibodaux. A combination of traditional survey methods, bathymetric and terrestrial scanning were used.

ST. MARTIN DRAINAGE IMPROVEMENTS

St. Martin Parish Government

Supervising Surveyor. DDG's surveying team has completed the topographic survey of approximately 13 miles of drainage path-ways spanning from Bayou Teche to Leed Champagne Road. This data collection included areas of culverts, open channels, bulkheads and numerous tributary channel interfaces with the main coulee.

LAFAYETTE CONSOLIDATED GOVERNMENT DRAINAGE INITIATIVE

Lafayette Consolidated Government

Supervising Surveyor. DDG was tasked with providing surveying services for detailed topographic/cross section/normal water surface surveys for four (4) drainage laterals within the boundaries of Lafayette Parish. These were IVC Lateral 4a Upper, IVC Lateral 11, Lateral 4a Anselm Coulee and Queue De Tortue Lateral No. 6. In addition, to cross sections along the channel alignments, this entailed locations (horizontal and vertical) of existing lateral drains and roadway crossings with the survey reaches.

AVAILABILITY

Throughout duration of Project

EXPERIENCE

40+ Years

WITH DDG

2019 to Present

LICENSES AND CERTIFICATES

Professional Land Surveyor - Louisiana

CONTACT

Phone: 985.249.6180

E-mail: dgowin@ddgpc.com



CRAIG CAMPBELL, PE, LEED AP

PROJECT ROLE: LEAD MECHANICAL ENGINEER



Craig is the Chief Operating Officer and is Lead Mechanical Engineer for the Corporate Office. He has been an integral part of our operations since 1997. Craig has been a principal with our firm since 2003. He oversees the design and construction management of the Lafayette office and also manages day-to-day operations of the corporate office. His experience includes complete design and construction administration of heating, ventilating, air conditioning, plumbing, and sprinkler systems for health care, educational, industrial and commercial facilities. He is also knowledgeable in Computer Aided Design (CAD) Systems.

RELEVANT PROJECT EXPERIENCE

South Cameron High School

This project consisted of the design of a new replacement facility for Cameron High School that was destroyed during Hurricane Rita. The replacement facility included approximately 102,000 square feet of classrooms, offices, kitchen, cafeteria, and library areas elevated approximately 14 feet above grade level. HVAC system design included air conditioning all areas, general restroom exhaust, science lab fume hood exhaust, and kitchen ventilation design. The air conditioning system was composed of several variable volume split system direct expansion air handling units supplying air through medium pressure duct work to VAV boxes in each classroom and constant volume split system direct expansion air handling units for the administration areas. All mechanical equipment was controlled by a DDC temperature controls system. Plumbing design included domestic water piping, sanitary sewer and vent piping, natural gas piping for the kitchen equipment and natural gas generator. Fire protection design included a wet pipe system throughout the facility served by a dedicated fire pump. The parking area and commons areas below first floor level were served by a corrosion resistant dry pipe sprinkler system.

McNeese University Hurricane Laura Repairs

McNeese University was devastated by Hurricane Laura in 2020 so the State of Louisiana's Office of Facility Planning and Control issued an Emergency Request for Qualifications for design firms to provide assessments and construction documents to rebuild the entire campus. Due to the need to get the campus back in operation in less than five months, the design firms were challenged to provide facility assessments and construction documents in less than one month. ADG Engineering was selected as the mechanical, electrical and fire protection engineering firm for 75% of the main campus buildings in addition to all of the athletic facilities. ADG Engineering provided MEP/FP construction documents for 65 buildings totaling 1,400,000 square feet of buildings in less than 30 days. The total construction cost of these projects was in excess of \$60,000,000.

Calcasieu Parish School Board Hurricane Laura Repairs

CPSB facilities were devastated by Hurricane Laura in 2020 so CPSB and their program manager CSRS solicited design firms to provide assessments and construction documents to rebuild each school board facility. Due to the need to get the campus back in operation, the design firms were challenged to provide facility assessments and construction documents as soon as possible. ADG Engineering was selected by the successful architectural firms as the mechanical, electrical and fire protection engineering firm for approximately half of the school board facilities. Due to ADG Engineering's hurricane recovery experience and capacity to perform quickly, we provided MEP/FP assessments and/or construction documents for 32 schools.

LeBlanc Elementary School

Construction of a new 14 million dollar, 100,000 square foot elementary school which replaced a hurricane damaged facility. Construction of the project was completed in less than 20 months. The school was built with state of the art information technology systems, including interactive projection screens in each classroom, and the latest intercom technology providing distribution of video and Internet data.

FEMA Temporary Housing Facilities

ADG designed over forty (40) temporary housing facilities for FEMA at various locations, including the design of the Perry Street Wharf, and other group sites located at universities, hospitals, airports, commercial areas, etc. working closely with FEMA, local authorities having jurisdiction, Department of Health and Hospitals, utility companies, etc. Plumbing design included providing potable domestic water and sanitary sewer for each RV trailer and ancillary buildings and connecting to local utilities or providing sewer treatment plants as required. Sites included design of public restroom facilities, office facilities, Laundromats, guard shacks, etc.

AVAILABILITY

Throughout duration of Project

EDUCATION

B.S. Mechanical Engineering, 1996
University of Louisiana at Lafayette

EXPERIENCE

25 Years of Experience

Licenses & CERTIFICATES

Professional Engineer
Louisiana P.E. (0041488)



DAVID STELLY, PE

PROJECT ROLE: LEAD ELECTRICAL ENGINEER



David has used his experience as an electrical engineer to meet the challenges of many noteworthy and complex projects. David has thirty (30) years experience in design, construction administration and code analysis. In regard to electrical systems for buildings, he has designed systems varying from lighting (interior, exterior, and specialty), power (normal, generator, UPS, computer grade), fire alarm systems, and special systems (telephone, data, CATV, media retrieval, intercom, nurse call, etc.) for commercial, educational, health care facilities and laboratories.

Outside of the building arena, David served as the electrical engineer for the City of St. Martinville for ten (10) years and has designed several high voltage distribution systems.

RELEVANT PROJECT EXPERIENCE

McNeese University Hurricane Laura Repairs

McNeese University was devastated by Hurricane Laura in 2020 so the State of Louisiana's Office of Facility Planning and Control issued an Emergency Request for Qualifications for design firms to provide assessments and construction documents to rebuild the entire campus. Due to the need to get the campus back in operation in less than five months, the design firms were challenged to provide facility assessments and construction documents in less than one month. ADG Engineering was selected as the mechanical, electrical and fire protection engineering firm for 75% of the main campus buildings in addition to all of the athletic facilities. ADG Engineering provided MEP/FP construction documents for 65 buildings totaling 1,400,000 square feet of buildings in less than 30 days. The total construction cost of these projects was in excess of \$60,000,000.

Calcasieu Parish School Board Hurricane Laura Repairs

CPSB facilities were devastated by Hurricane Laura in 2020 so CPSB and their program manager CSRS solicited design firms to provide assessments and construction documents to rebuild each school board facility. Due to the need to get the campus back in operation, the design firms were challenged to provide facility assessments and construction documents as soon as possible. ADG Engineering was selected by the successful architectural firms as the mechanical, electrical and fire protection engineering firm for approximately half of the school boards facilities. Due to ADG Engineering's hurricane recovery experience and capacity to perform quickly, we provided MEP/FP assessments and/or construction documents for 32 schools.

Superdome Renovation Facility Up-grade Hurricane Katrina Assessment / Repairs

Following Hurricane Katrina in 2005, the Superdome facility needed significant repairs related to the hurricane, together with repairs associated with being a shelter for evacuees. Facility enhancements were also developed to bring the facility to current NFL standards for stadiums. Repair costs were approximately \$158 million dollars. Enhancement costs were approximately \$100 million dollars.

NOAA Atlantic Oceanographic And Meteorological Lab Hurricane Irma Assessment / Repairs

Associated Design Group, Inc. served as the consultant to Ahtna, Inc. to provide MEP design services for repairs resulting from damage associated with Hurricane Irma. ADG has recently been involved with multiple projects on the site in addition to the hurricane renovations. The projects include the upgrade of the existing chiller for the facility, to 1st floor office renovations and 1st laboratory upgrades and renovations.

FEMA Temporary Housing Facilities

ADG designed over forty (40) temporary housing facilities for FEMA at various locations, including the design of the Perry Street Wharf, and other group sites located at universities, hospitals, airports, commercial areas, etc. working closely with FEMA, local authorities having jurisdiction, Department of Health and Hospitals, utility companies, etc. Plumbing design included providing potable domestic water and sanitary sewer for each RV trailer and ancillary buildings and connecting to local utilities or providing sewer treatment plants as required. Sites included design of public restroom facilities, office facilities, Laundromats, guard shacks, etc.

AVAILABILITY

Throughout duration of Project

EDUCATION

B.S. Electrical Engineering
University of Louisiana at Lafayette

YEARS OF EXPERIENCE

30 Years

LICENSES & CERTIFICATES

Professional Engineer
Louisiana P.E. (26070)



H. STEPHAN BERNICK, P.E., M.S.E.
PROJECT ROLE: PRINCIPAL STRUCTURAL ENGINEER



Mr. Bernick began his career with Morphy, Makofsky, Inc. in 1999. He has been responsible for the design and production of construction documents for buildings and structures ranging in size from large residential homes to mid-rise hotel towers. Utilizing his geotechnical background, Mr. Bernick is an expert designing both deep and shallow foundations. Past projects have employed pipe piles, precast concrete piles, timber piles, composite timber-concrete piles, auger cast piles, helical piles and drilled shafts.

As a senior engineer, Mr. Bernick headed-up our team of engineers conducting inspections post-Katrina.

RELEVANT PROJECT EXPERIENCE

Royal Crescent Hotel Wall Stabilization, 535 Gravier St.
 NOCCA Addition and Historic Renovation
 2020 St. Charles Envelope Improvements
 Fairfield Inn & Suites – 346 Baronne Historic Renovation
 Church of the King St. Charles
 2600 St. Claude Historic Redevelopment
 Holy Cross Development

AVAILABILITY

Throughout duration of Project

EDUCATION

Bachelor of Science, Civil Engineering
 Tulane University, 1994

Master of Science, Civil Engineering
 Tulane University, 1998

YEARS OF EXPERIENCE

27 Years

LICENSES & CERTIFICATES

Professional Engineer
 Louisiana P.E. (29015)



JAMIE L. SAXON, P.E.
PROJECT ROLE: STRUCTURAL ENGINEER



Jamie Saxon has worked with Morphy, Makofsky, Inc. as an engineer since 1993. He has been responsible for foundation and structural design as well as analysis on residential, commercial, military, industrial, levee structures, and drainage pump stations.

Mr. Saxon's past structural and civil engineering design has included many complex and unique foundation systems including pile mat footings and mono-pile foundations. He has also designed temporary and permanent cantilevered and anchored sheet pile bulkheads and cofferdams as part of the Hurricane Protection systems in the post Katrina landscape.

He has worked extensively on renovation projects over the last twenty-five years. This has included the initial inspection and assessment of the conditions and the production of contract documents for the repairs and rehabilitation to restore the buildings. Many of the buildings have been registered on the Federal Historic preservation list and which has dictated that the repairs used use materials and techniques that match the original construction of the buildings.

AVAILABILITY

Throughout duration of Project

EDUCATION

Bachelor of Science, Civil Engineering
 University of Adelaide, Australia, 1992

YEARS OF EXPERIENCE

30 Years

LICENSES & CERTIFICATES

Professional Engineer
 Louisiana P.E. (30529)

RELEVANT PROJECT EXPERIENCE

Sazerac House Historic Renovation

Bell Artspace Campus Historic Renovation

Country Inn & Suites Renovation & Preservation of Historic Wall

1423 N. Claiborne Historic Renovation

Crossman School Wall Stabilization for Termite Remediation



SECTION 2 | RELEVANT EXPERIENCE + REFERENCES



HURRICANE RECOVERY PROJECTS

HURRICANE ASSESSMENTS AND REPAIRS

Lafourche Parish School Board

Assessment and Repair of 18 Schools: The Lafourche Parish School Board contracted with DDG to assess damages caused by Hurricanes Gustav and Ike at eighteen (18) sites across northern Lafourche Parish and in the City of Thibodaux. DDG worked closely with LPSB staff and FEMA personnel to conduct site visits and prepare detailed damage descriptions in accordance with FEMA Project Worksheet (PW) documenting requirements. Once all sites were documented, DDG proceeded with plans and specifications to repair the scopes of work identified in the FEMA PW's. Several separate projects were completed following the initial assessment. Renovations included roofing repair/replacement, exterior door and window repair, interior flooring, plaster repair, painting, ceiling repair/replacement, a new portable classroom building at one site, asbestos abatement, and miscellaneous additional items. This project was coordinated with FEMA for reimbursement of LPSB monies.

Emergency Repairs to E.D. White and Vanderbilt Catholic High Schools

Diocese of Houma-Thibodaux

The Diocese of Houma-Thibodaux contracted with DDG to facilitate repairs to their gymnasiums as a result of Hurricane Gustav. DDG presented multiple options to the diocese along with the costs for each scenario. Once the scope of work was established, DDG assisted in "fast-tracking" the design and construction of the repairs. The final part of this project involved documentation of the repairs and costs to FEMA in order for schools to be reimbursed for the cost of repairs. This project was funded in 2009 and were completed in July 2009. The repairs did not have an initial budget since it was emergency repairs. The costs were documented by labor and materials and were then reimbursed by FEMA.

DISASTER DEBRIS MONITORING PROJECT

Bayou Lafourche Fresh Water District

DDG assisted the Bayou Lafourche Fresh Water District with disaster debris removal services relative to the removal of storm debris from Bayou Lafourche. The services provided were contract compliance supervision, inspection, work documentation and identification. The contact with the district also required DDG to provide project management to oversee debris monitoring activities in the field. DDG provided field monitor personnel to check and verify information on debris removal which including the monitoring of collection activity. DDG personnel also issued manifest load tickets at each site for each load and recorded the performance and productivity of the debris removal crew. DDG personnel also measured and computed debris volume in cubic yard and prepared a master log book of all equipment employed by the District's debris removal contractor.

PARISH FACILITY HURRICANE DAMAGE ASSESSMENT

Lafourche Parish Government

The Lafourche Parish Government contracted with DDG to assess damages caused by Hurricane Gustav to the parish office in Raceland, LA. DDG worked closely with parish staff and FEMA personnel to conduct site visits and prepare detailed damage descriptions in accordance with FEMA Project Worksheet (PW) documenting requirements. Once all information was documented, DDG represented the parish in negotiating damage settlements with their private insurance carrier and FEMA.

BAYOU TOWERS AND SENATOR CIRCLE HURRICANE DAMAGE ASSESSMENTS/INDEPENDENT COST VERIFICATION

Terrebonne Parish Government

It was DDG's responsibility to verify quantities and costs that were reflected in a previous report prepared by the Houma-Terrebonne Housing Authority for HUD's use to document damages sustained during hurricanes Gustav and Ike in Summer 2008. Material quantities in the Houma-Terrebonne Housing Authority reports were verified for both the Bayou Towers and Senator Circle sites, along with unit costs and recommendations for additional items as observed. The assessment was completed in a timely manner in order for the Houma-Terrebonne Housing Authority to pursue necessary HUD funding/reimbursement.

BAYOU TOWERS ROOF REPAIRS

Terrebonne Parish Government

The project consisted of the repair/replacement of temporary roof patching and associated flashing with new modified bitumen roofing and prefinished metal flashing, along with the repair of the existing lightning protection system. The project was budgeted at \$148,500, but came in under budget during bidding at \$101,532. This project was completed in September 2009.



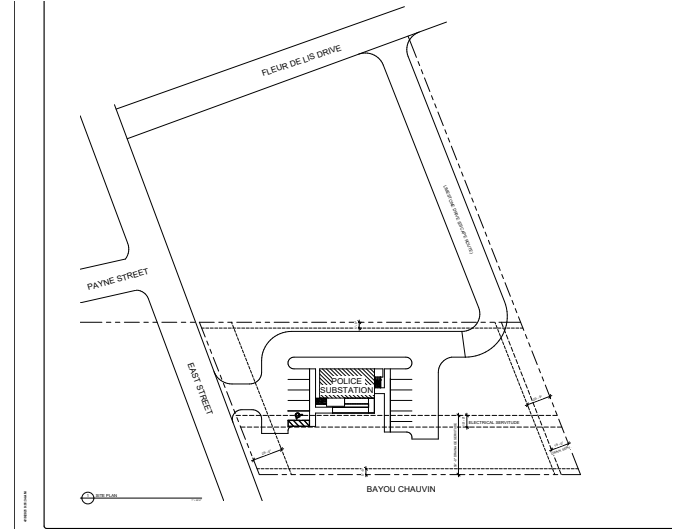


PUBLIC BUILDINGS & CONTENTS

EASTSIDE PUBLIC SAFETY POLICE SUBSTATION Terrebonne Parish Consolidated Government

Terrebonne Parish Consolidated Government was been awarded \$145,000,000 from the Department of Housing and Urban Development Louisiana as Community Development Block Grant (CDBG) funding through the Louisiana Office of Community Development as a result of hurricanes Gustav and Ike in 2008. The Parish adopted the Gustav/Ike Recovery Plan in 2009, which was focused on the reduction of flood risk, wind risk, and providing redundant power, resilient government serviced, and affordable housing throughout the parish.

DDG was recently selected to provide architectural, engineering, and all other necessary consulting services to design the site plan, infrastructure, and foundation for a new modular public safety building in accordance with the (CDBG) application. The project will include all necessary infrastructure design services for the placement of a new modular Eastside Public Safety Police Substation



LAFOURCHE PARISH CORRECTIONAL COMPLEX Lafourche Parish Law Enforcement District

As a Joint Venture, Duplantis Design Group, PC + GraceHebert Architects, APAC were selected to design a state-of-the-art, 128,000 square foot, 600 bed correctional complex in Thibodaux, LA, for the Lafourche Parish Sheriff's Office. In addition to housing units ranging from maximum security to dormitory-style layouts, the facility also includes intake/processing functions, property storage, video and contact visitation, medical services, full commercial kitchen and dining area, commercial laundry area, maintenance, and administrative areas. Another important aspect of this facility is the numerous program spaces, classroom, and meeting spaces designed to offer rehabilitation programs to inmates awaiting trial. Site features include separate public and staff access/parking, secure sallyport, and on-site sewer treatment plant. The project was delivered via the construction Manager-At-Risk (CMAR) method with Yates Construction and construction was completed in December 2018.



ASSUMPTION PARISH JAIL ADDITIONS Assumption Parish Police Jury

Duplantis Design Group completed an 80 bed addition to the existing Assumption Parish Jail. The dormitory is divided into two separate dormitory pods each containing 40 beds for work release inmates. The site layout also allows for the addition of another dorm building in the future. The building is equipped with an emergency generator capable of running the dormitory addition, as well as any future buildings. This project was administered by the Louisiana Recovery Authority and was subject to CDBG regulations, including Davis Bacon and Buy America





PUBLIC BUILDINGS & CONTENTS

LAFOURCHE PARISH COMMUNITY CENTER Lafourche Parish Government

Project Highlights

- Louisiana Recovery Authority Funded

DDG was contracted by Lafourche Parish Government for full architectural design and site civil to design a new community and recreation center in Lockport, LA. The building is a 15,000 square foot multipurpose facility which is currently under construction with a budget of \$4 million. The main gym space can accommodate high school regulation volleyball and basketball with seating for 300 people. In a cross court arrangement there will be two regulation volleyball courts with seating for 150 people and two practice basketball courts without seating. A full service catering kitchen will also be provided, and the structure will have emergency power to run the entire facility. The center will be able to handle local club meetings as well. This project is being funded by the Louisiana Recovery Authority as a result of Hurricane Gustav.



ADMINISTRATION BUILDING Assumption Parish Police Jury

Project Highlights

- Louisiana Recovery Authority Funded

The Assumption Parish Police Jury contracted with DDG for the civil engineering and architectural design of a 10,800 square foot administration building in Napoleonville, LA. The center was designed to accommodate the governmental functions for Assumption Parish. The first floor of the building houses the police jury meeting room, executive conference room, the mayor's office, and support spaces. The second floor houses office space for all remaining parish departments (administration, accounting, economic development, etc.). The building also has an air conditioned second floor cross walk to the existing courthouse building. This project was funded by the Louisiana Recovery Authority.



TERREBONNE JUVENILE JUSTICE COMPLEX Terrebonne Parish Consolidated Government

This is a LCDBG funded project, consisting of a new 32-bed juvenile detention facility for Terrebonne Parish Consolidated government. The facility includes 24 beds for boys and 8 beds for girls, a full kitchen and dining area, indoor gymnasium, 3 classrooms, 4 separate 8 bed wings equipped with a day room, shower, full time monitoring station, restrooms, and an outdoor recreation yard.

As part of the scope of this project, DDG was also responsible for completing and assisting Terrebonne Parish with the submittal of the required LCDBG applications for the funding of the project, and the subsequent coordination with OCD during the application review and subsequent design and construction.





PUBLIC BUILDINGS & CONTENTS

MULTI-USE GOVERNMENT COMPLEX Terrebonne Port Commission

Project Highlights

- Capital Outlay & FEMA Funded
- Emergency Generator

This project consists of the renovation of an existing building for the Terrebonne Port Commission. Demountable Partitions were used to create three offices, a kitchen, a conference room, and a Board Room for the Commission to meet in. Some design features include: Lobby feature wall using Carved MDF wall panels mimicking the look of water, a custom reception desk that mimics the common materials that are used around the Port, and wood panels walls in the Board room.



LDWF QUONSET HUT REPLACEMENT Montegut, LA

Project Highlights

- Capital Outlay & FEMA Funded

DDG's architecture team prepared plans for the repairs/replacement of a building that was damaged in Hurricane Gustav storm surge. DDG worked closely with Wildlife and Fisheries and FEMA personnel to conduct site visits and prepare detailed damage descriptions in accordance with FEMA Project Worksheet (PW) documenting requirements. Once all information was documented, DDG proceeded with plans and specifications to repair the scopes of work identified by FEMA. The Quonset Hut was replaced with a new prefabricated metal structure and elevated on an engineered structure with two ramps and a stair to protect from future storm surge.

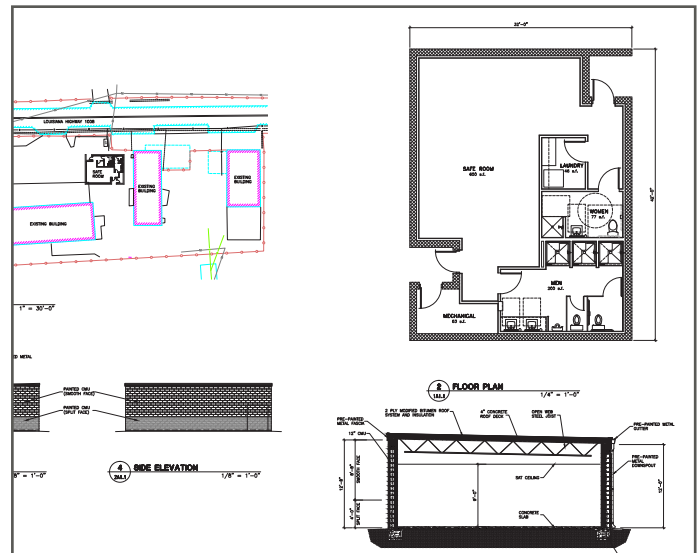


HURRICANE SAFE ROOM Assumption Parish

Project Highlights

- Designed in accordance FEMA 361
- Grant funded

DDG assisted Assumption Parish with the design of a new Hurricane Safe Room for Assumption Parish. The building is designed in accordance with FEMA 361 and will be able to withstand 200 mph winds. The building will be located adjacent to the existing public works building. The total square footage of the building is 1,344 square feet and includes a bunk room, restroom/showers and laundry room for 22 occupants. The project is grant-funded with a construction cost of \$450,000. Construction was completed in December 2016.





WATER CONTROL FACILITIES & PUBLIC UTILITIES

JESSE DUFRENE PUMP STATION

Lafourche Parish Government

DDG is responsible for the design and preparation of the plans and specifications for a new 200 cfs stormwater pumping station. This pumping station is located at the end of Cypress Villa Lane within the community of Gheens and is an integral part of the Jesse Dufrene Drainage System. This pump station is responsible for maintaining the water elevation in an area in excess of 900 acres. The station is constructed of concrete to support the three vertical lift diesel driven pumps. The engines are housed within an engineered metal building which protects them from the environment but allows for easy operation and maintenance of the equipment. The station is equipped with trash screens which prevents vegetation and large debris from entering the concrete pump station and possibly damaging the pumps. The construction cost for this project is \$1,577,421.

TIMBERLAND PUMP STATION

Lafourche Parish Government

DDG is responsible for the design and preparation of the plans and specifications for a new 200 cfs stormwater pumping station. EMA DR-1603 Hazard Mitigation Grant Program for the proposed improvements to the Timberland Pump Station. Upon approval of the application, DDG prepared the phase I deliverables, which included a hydraulics and hydrology investigation for the proposed pump station improvements, along with the design and preparation of the construction plans and specifications for the a new 20 inch hydraulic drainage pump station, located in Pointe-aux-Chenes. The pump station was designed utilizing five and three foot diameter steel casings with bar screens for the pump and intake pipe. The design of the new pump station also includes a metal building located on an elevated, pile supported, concrete slab for protection of the new pump station. As part of the scope of work for this project, DDG worked closely with Lafourche Parish staff and the team at GOHSEP through the application and design process to provide all information necessary to get the project funding approved for phase II, which is the construction portion of the project. The project's cost was \$451,000.

LEIGHTON PUMP STATION IMPROVEMENTS

Lafourche Parish Government

The Leighton Pump Station Improvement project is a Hazard Mitigation Grant Program (HMGP) project which includes improvements to the stormwater pump station site and the existing drainage conveyance system. The pump station site improvements include wind hardening of the existing metal building, addition of a new 48" diameter storm water pump, installation of a new bulkhead, and installation of a new automated trash rake assembly. Conveyance system improvements include the removal of existing undersized drainage culverts and replacement with new larger culverts.

ST. CHARLES BY-PASS PUMP STATION

Lafourche Parish Government

The scope of work covered under this proposal includes the design of a new package pump system at the southern-most end of the recently constructed St. Charles By-pass Rd central ditch (approximate 29°44'0.62"N; 90°44'6.84"W). The package pump station is expected to include one 12" pump, either natural gas or bi-fuel, (if available), with fixed suction and discharge piping, and a permanent raceway for flexible lines in the event that a second mobile pump needs to be brought in for major storm events. Also included in the design will be a fixed trash screen on the existing concrete sump, elevation gauge, automatic float system, watertight slide gate, and coordination of gas service to the pump site. DDG will finalize design and specifications sufficient for soliciting proposals.

WALLS & MIRE SEWER LIFT STATION RENOVATIONS

Terrebonne Parish Consolidated Government

This project was completed in October of 2016 and included the rehabilitation of two existing sewer lift stations in Terrebonne Parish. The improvements to both of the pump stations included the removal of all of the existing pumps, force main piping and control panels, demolition of the existing pump houses, addition of a second wet well at each station for added control volume, installation of new duplex submersible pumping systems, force main manifolds, control panels, concrete slabs, and decorative fencing with brick columns. The existing and new concrete wet wells were all coated with a polymer based coating system to further extend the service life of the stations.





WATER CONTROL FACILITIES & PUBLIC UTILITIES

DRAINAGE PROGRAM MANAGEMENT St. Tammany Parish Government

Following the receipt of CDBG-OCD Hurricanes Katrina and Rita related funds in 2009, St. Tammany Parish selected DDG to design and oversee an effective drainage improvement program. The resulting program led to the design and implementation of 10 large-scale regional drainage improvement projects.

Since the initial receipt of CDBG-OCD funds, DDG has continued to provide on-call assistance for St. Tammany Parish's drainage improvement program and coastal management program. Activities supported by DDG include capital planning, project development, funding support, grant application support, benefit cost analysis, and H&H modeling support to augment the Parish's in-house staff. As a subconsultant to DDG, CE Hydro conducted DFIRM coordination with FEMA including review of surge models, LAMP for non-accredited levees, review and analysis of WHAFIS modeling results, and general FEMA coordination.



PARISHWIDE PUMP STATION MITIGATION Lafourche Parish Government

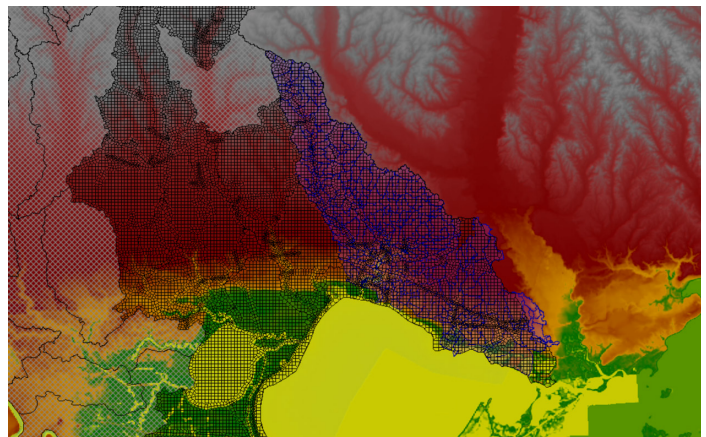
DDG was responsible for assisting Lafourche Parish Government with the initial HMGP applications for funding of improvements to various pump stations throughout the parish. Upon approval of the initial application, DDG prepared the phase I deliverables, which included a hydraulics and hydrology investigation for the proposed pump station improvements, along with the design and preparation of the construction plans and specifications for the proposed improvements to the Lil Al, Butch Hill, Rita, Al Robichaux, Old Valentine, Edgar Guidry, and Yankee Canal pump stations.

As part of the scope of work for this project, DDG worked closely with Lafourche Parish Government staff and the team at GOHSEP through the application and design process to provide all information necessary to get the project funding approved for phase II, which is the construction portion of the project.



FLOOD RISK AWARENESS & PROTECTION STUDY St. Tammany Parish Government

Following the extreme flooding that occurred in March and August of 2016, St. Tammany Parish identified the need for better flood risk products to support planning of regional drainage improvement projects and to improve emergency response during extreme weather events. Since January of 2017, Duplantier Design Group with support from CE Hydro, has provided planning and modeling services to St. Tammany Parish to improve flood risk awareness and reduce flood risk in the Tchefuncte River Basin. Through a comprehensive inventory of existing H&H models in St. Tammany Parish, DDG identified an existing regional 2D HEC-RAS 5 model originally developed by USACE to evaluate impacts following the 2016 storms. The model was significantly improved by integrating channel geometry from previous basin-wide studies including the most recent models completed in support of FEMA's Flood Insurance Study for St. Tammany Parish. The model was calibrated for multiple events.





WATER CONTROL FACILITIES & PUBLIC UTILITIES

DERBY HEIGHTS DRAINAGE IMPROVEMENTS Lafayette Consolidated Government

Located in Lafayette, Louisiana, Derby Heights Subdivision experienced significant flooding during and after the major precipitation event that occurred between August 11 and August 13, 2016. During that event, storm water overflowed from Webb Coulee (north of Derby Heights) and was trapped in a large portion of the subdivision for weeks following the event. The subdivision retained 2 feet of standing water and was unable to drain. The Lafayette Consolidated Government (LCG) requested that DDG prepare a H&H study to understand the cause of flooding, identify possible solutions.

Two solutions were identified for construction as described below:

The first improvement will consist of restoring the roadside ditches in the subdivision by removal of accumulated silt and replacement of driveway culverts adversely affecting drainage for normally occurring storm events. This project design is complete with bids set to be received on September 20, 2020.

The second proposed improvement will consist of construction of a floodwall to prevent the overflow from Webb Coulee from inundating the neighborhood during larger storm events. While this solution may not prevent the catastrophic flooding experienced during the 2016 flood event, this wall is intended to relieve flooding in the neighborhood in lesser storm events.



W-14 DRAINAGE IMPROVEMENTS Lafourche Parish Government

In conjunction with the development of the Summit Fremaux project, DDG developed and prepared a comprehensive HEC-HMS drainage study for the W-14 Basin in order to address the drainage impacts and concerns. The recommendation of the study resulted in the widening with the W-14 Canal to a 40 foot wide bottom with 3:1 slopes for a length of 6,700 linear feet. In addition, the relocation and upgrades made to the Lakewood Ditch consisted of modeling several alternatives of box culvert crossings in order to minimize the head losses through the system. In addition to the W-14 widening improvements, the scope of the project also involved the construction of approximately 9,700 linear feet of 10 inch diameter waterline and aerial crossing along the west side of Summit Boulevard. Furthermore, the project consisted of approximately 6,700 linear feet of 10 inch diameter gravity sewer lines, sewer lift station, and encasing approximately 120 linear feet of an existing 18 inch diameter gravity line. This project was funded through the CDBG program.



LINDBERG DRIVE SEWER IMPROVEMENTS City of Slidell

DDG provided civil engineering design and permitting services and assisted the City of Slidell with bid and limited construction administration services for the construction of a sanitary sewer lift station and wet well, 268 LF of sanitary sewer main extension, and 790 LF of sanitary sewer force main, including all manholes and air release valves.





PUBLIC BUILDINGS & CONTENTS

INDEPENDENT COST VERIFICATION AT MULTIPLE SITES

HOUSING AUTHORITY OF LAFOURCHE PARISH

The project included independent cost verifications of hurricane damaged sites at five locations (Thibodaux, Chackbay, Raceland, Larose and Cut Off/Galliano) throughout Lafourche Parish. The assessment included reporting and cost estimation for all five locations. The assessment was completed in a timely manner in order for the Housing Authority of Lafourche Parish to pursue necessary HUD funding/reimbursement. This project was completed in June 2009.

RENOVATIONS AND DEMOLITIONS TO 15 BUILDINGS

MORGAN CITY HOUSING AUTHORITY

Starting in 2010 until present, DDG has renovated 40 units in seven buildings and demolished 24 units in eight buildings for a total construction cost of \$2,054,850. The projects on the Morgan City Brownell Site included mainly interior renovations, as well as complete mechanical, electrical and plumbing renovations.

2009 AND 2010 CAPITAL FUNDS PROGRAM RENOVATIONS TO HOUSING UNITS

ST. CHARLES HOUSING AUTHORITY

In February 2011, the St. Charles Parish Housing Authority contracted with DDG to provide architectural design services to renovate the interior of approximately five dwelling units. The scope of work included completely or partially gutting and renovating unit interiors, including electrical service upgrades, HVAC and plumbing upgrades. The scope also included replacing exterior doors and windows. The project cost was \$230,000 and was completed in February 2012.

AFFORDABLE HOUSING COMPLEX

START CORPORATION

The project consisted of a new two story, eight unit affordable housing complex located adjacent to the Start Corporation office in Houma, LA. There are four units on the ground floor and four units on the second floor. All eight units are studio type units and are approximately 420 square feet each. All ground floor units are handicap accessible. The units interiors consist of combined living/bedroom/dining room area, a small kitchen and bathroom area. The building is wood frame construction with plaster and brick veneer exterior walls and a hipped asphalt shingle roof. Site work included new concrete parking to accommodate residents of the housing complex, as well as additional parking to accommodate the Start Corporation staff. The project cost was \$657,000 and was completed in August 2014.

RE-ROOFING OF BARKER HALL & CHABERT HALL

NICHOLLS STATE UNIVERSITY

Facility Planning and Control contracted with DDG to replace the roofs on Barker and Chabert Hall on the NSU campus. The scope of work was to replace approximately 25,000 square feet of existing built up roof with a 2 ply modified bitumen roof system. The project was completed in Spring of 2011 with a total construction cost of \$275,000.

AGNES L. BAUDUIT ELEMENTARY SCHOOL REFURBISHMENT

NEW ORLEANS RECOVERY SCHOOL DISTRICT

This project involves the renovation of a historic structure built in 1912. The scope of this project includes the repair and restoration of existing masonry and plaster, refurbishment of existing windows, replacement of exterior doors and frames, replacement of existing roof, new chilled water HVAC system and ductwork, replacement of existing lights, renovations to the existing kitchen area, a new dumpster enclosure, and minor modifications to the existing sprinkler system.

ALBERT CAMMON MIDDLE SCHOOL RENOVATIONS

ST. CHARLES PARISH PUBLIC SCHOOLS

This project consists of a major interior renovation of a classroom wing at Albert Cammon Middle School. All architectural, mechanical and electrical work are being redesigned to accommodate new classroom layouts.



HIGHWAY 21 / BREWSTER ROAD WIDENING ST. TAMMANY PARISH GOVERNMENT

DDG worked with St. Tammany Parish Government in order to meet the demands of the traffic needs of the parish with the extension of Brewster Road. DDG was responsible for the design of roughly 3,000 linear feet of a four lane, divided boulevard that connects the new interchange on Interstate 12 to Hwy 21. The project was awarded with an aggressive schedule and multiple design constraints that required various coordination activities such as wetlands permits, drainage studies and overall coordination with other consultants in this traffic corridor.

RIVER CHASE DRIVE ST. TAMMANY PARISH GOVERNMENT

River Chase Drive included a roundabout that was routed from the south side of Brewster Road to approximately 12,000 linear feet south. The north portion of roadway was designed as a two lane divided roadway whereas the south portion was an undivided two lane road. The purpose of the road was to connect a future 200 plus lot residential subdivision to Brewster Road and to provide several key access points to undeveloped portions of the River Chase Development.

Part of DDG's scope of work included permitting the plans for construction, as well as soliciting plans for bids to various contractors. DDG performed various site inspections, reviewed testing reports, and advised of testing results that did not meet project specifications. Other improvements included in the roadway design plans were public water lines, sanitary sewer lines, and a lift station for future developments

2020 CITY OF THIBODAUX ROADWAY IMPROVEMENTS CITY OF THIBODAUX

This project included the evaluation and subsequent rehabilitation of six streets, approximately 6,500 linear feet of roadway, within the limits of the City of Thibodaux. DDG's services included evaluating the deficiencies of the existing streets, coordinating with the geotechnical sub-consultant for core samples within the existing streets to determine the subsurface characteristics of the roadways, making recommendations for improvements to the streets based on the initial evaluation and the information obtained from the geotechnical report, coordinating with the survey sub-consultant for the required topographic survey, preparing the construction drawings and specifications for the project, bidding and construction administration services

The improvements included full-depth patching, milling, and asphalt overlay of E 7th St, Isabelle Place, Harrison St, and W 10th St; full removal and replacement of Plater Court which was a severely deteriorated concrete curb and gutter roadway; and installation of subsurface drainage along the west side of Audubon Ave near Nicholls campus.

DDG assisted the owner with bids in accordance with Louisiana public bid law, conducted the pre-bid meeting, answered any pertinent RFIs, issued necessary addenda, and conducted the bid opening. Upon receipt of bids, DDG reviewed all of the bids, evaluated for completeness, made a recommendation to the owner on the lowest responsive and responsible bidder, and coordinated contract execution.

Construction administration services included project representation, preparation of daily field reports, in-office construction administration including shop drawing review, review of contractor RFI's, and review of contractor pay requests.



HURRICANE RECOVERY PROJECTS

MCNEESE STATE UNIVERSITY

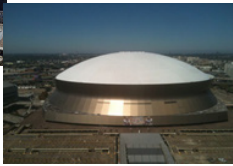
HURRICANE RITA ASSESSMENT / REPAIRS LAKE CHARLES, LOUISIANA

ADG responded to Environmental Remediation needs at McNeese State University in Lake Charles following Hurricane Rita bringing the campus on-line in an extremely short time period by preparing over 25 bid packages in a month for multiple buildings throughout the MSU campus as a prime designer for the State of Louisiana. Design included creating plans for the removal or cleaning of contaminated materials in a manner that prevents the emissions of fungi and/or dust contaminated with fungal products from leaving a work area and entering an occupied or non-abatement area, while also protecting the health of workers performing the abatement.

MCNEESE STATE UNIVERSITY

HURRICANE LAURA ASSESSMENT / REPAIRS

McNeese University was devastated by Hurricane Laura in 2020 so the State of Louisiana's Office of Facility Planning and Control issued an Emergency Request for Qualifications for design firms to provide assessments and construction documents to rebuild the entire campus. Due to the need to get the campus back in operation in less than five months, the design firms were challenged to provide facility assessments and construction documents in less than one month. ADG Engineering was selected as the mechanical, electrical and fire protection engineering firm for 75% of the main campus buildings in addition to all of the athletic facilities. ADG Engineering provided MEP/FP construction documents for 65 buildings totaling 1,400,000 square feet of buildings in less than 30 days. The total construction cost of these projects was in excess of \$60,000,000.



SUPERDOME RENOVATION FACILITY UP-GRADE

HURRICANE KATRINA ASSESSMENT / REPAIRS NEW ORLEANS, LA

Following Hurricane Katrina in 2005, the Superdome facility needed significant repairs related to the hurricane, together with repairs associated with being a shelter for evacuees. Facility enhancements were also developed to bring the facility to current NFL standards for stadiums. Repair costs were approximately \$158 million dollars. Enhancement costs were approximately \$100 million dollars.



NOAA ATLANTIC OCEANOGRAPHIC AND METEOROLOGICAL LAB

HURRICANE IRMA ASSESSMENT / REPAIRS

MIAMI, FLORIDA

Associated Design Group, Inc. served as the consultant to Ahtna, Inc. to provide MEP design services for repairs resulting from damage associated with Hurricane Irma. ADG has recently been involved with multiple projects on the site in addition to the hurricane renovations. The projects include the upgrade of the existing chiller for the facility, to 1st floor office renovations and 1st laboratory upgrades and renovations.



NOAA FLORIDA KEYS NATIONAL MARINE SANCTUARIES

HURRICANE IRMA BUILDING ASSESSMENT

KEY LARGO, FLORIDA

On September 10, 2017 the referenced facility was damaged by Hurricane Irma and the associated rain, wind (gusts between 73 mph to 93 mph) and associated wind driven rain water. The team of Associated Design Group, Inc. (ADG Engineering) and Structure Architecture APAC were asked to make a site visit/assessment of the buildings on site to document current conditions and effects of the storm damage, as well as development of Rough Order of Magnitude (ROM) costs of repairs related to the identified issues.



ADG HURRICANE RECOVERY PROJECTS



SOUTH CAMERON HIGH SCHOOL HURRICANE RITA GRAND CHENIER LOUISIANA

This project consisted of the design of a new replacement facility for Cameron High School that was destroyed during Hurricane Rita. The replacement facility included approximately 102,000 square feet of classrooms, offices, kitchen, cafetorium, and library areas elevated approximately 14 feet above grade level. HVAC system design included air conditioning all areas, general restroom exhaust, science lab fume hood exhaust, and kitchen ventilation design. The air conditioning system was composed of several variable volume split system direct expansion air handling units supplying air through medium pressure duct work to VAV boxes in each classroom and constant volume split system direct expansion air handling units for the administration areas. All mechanical equipment was controlled by a DDC temperature controls system. Plumbing design included domestic water piping, sanitary sewer and vent piping, natural gas piping for the kitchen equipment and natural gas generator. Fire protection design included a wet pipe system throughout the facility served by a dedicated fire pump. The parking area and commons areas below first floor level were served by a corrosion resistant dry pipe sprinkler system.

CALCASIEU PARISH SCHOOL BOARD HURRICANE LAURA REPAIRS

CPSB facilities were devastated by Hurricane Laura in 2020 so CPSB and their program manager CSRS solicited design firms to provide assessments and construction documents to rebuild each school board facility. Due to the need to get the campus back in operation, the design firms were challenged to provide facility assessments and construction documents as soon as possible. ADG Engineering was selected by the successful architectural firms as the mechanical, electrical and fire protection engineering firm for approximately half of the school boards facilities. Due to ADG Engineering's hurricane recovery experience and capacity to perform quickly, we provided MEP/FP assessments and/or construction documents for 32 schools.

Barbe High School Bell City
Chennault Maintenance Dept
College Oaks Elementary
Dolby Elementary School
Frasch Elementary
Gillis Elementary
Iowa Middle & High Schools
J. Watson Middle/Elementary
LaGrange High
Lake Charles-Boston Academy
Lebleu Settlement Elementary
Maplewood Elementary & Middle Schools
Moss Bluff Elementary
Moss Bluff Middle

Oak Park Elementary Oak Park Middle
Positive Connections Alternative Elem
R.W. Vincent Elementary
S.J. Welsh Elementary School
Sam Houston High
St. John Elementary
Sulphur High 9th Grade
Sulphur High
T & I Center
T.H. Watkins Elementary
T.S. Cooley Elementary School
Technology Center Operations
Technology Training Center
Vincent Settlement Elementary
W.T. Henning Elementary
Washington Marion High

ADG HURRICANE RECOVERY PROJECTS



FEMA TEMPORARY HOUSING FACILITIES

ADG designed over 40 temporary housing facilities for FEMA at various locations including universities, hospitals, airports, commercial areas, etc. working closely with FEMA, local authorities having jurisdiction, Department of Health and Hospitals, utility companies, etc.

FEMA Airport Baton Rouge Site #1	FEMA Trailer Park - Monroe at Olive
FEMA Airport Baton Rouge Site #2	FEMA Trailer Park - Mt. Carmel Baptist
FEMA Airport Baton Rouge Site #2A	FEMA Trailer Park - Old J.C. Penny
FEMA Airport Baton Rouge Site #2B	FEMA Trailer Park - Tulane University
FEMA Airport Baton Rouge Site #3	FEMA Trailer Park - Westbank Expressway
FEMA RV Emergency Trailer Park - Groom Road	FEMA Trailer Park - Xavier
FEMA RV Emergency Trailer Park - Lobdell Road	FEMA Trailer Park Audubon Park
FEMA RV Trailers - Buckhorn Street - Monroe	FEMA Trailer Park Delgado Community College
FEMA RV Trailers - Robinson Road - Monroe	FEMA Trailer Park Mt. Olive Baptist
FEMA Trailer Park - 3131 Bienville	FEMA Trailer Park Woldenberg Nursing Home
FEMA Trailer Park - Carondelet & Harmony	FEMA Trailers – DOTD - Bridge City
FEMA Trailer Park - Central Congregational	FEMA Trailers - Claiborne - Jackson Avenue
FEMA Trailer Park - Charles Riley Site	FEMA Trailers - Ft. Knox - Marrero, LA
FEMA Trailer Park - City Park	FEMA Trailers - Jefferson Flea Market Site
FEMA Trailer Park - Ephesus	FEMA Trailers - Perry Street Wharf Site
FEMA Trailer Park - Frey Plant Site	FEMA Trailers - Poydras St. at Galvez
FEMA Trailer Park - Gideons Church	FEMA Trailers - Shepard Creek
FEMA Trailer Park - God's House	FEMA Trailers - West Minister Park Site
FEMA Trailer Park - Kingsley House	FEMA Trailers Kenner Regional Hospital
FEMA Trailer Park - Monroe at Edinburgh	FEMA Trailers Louis Armstrong Airport
FEMA Trailer Park – Lake Charles Memorial Hos.	FEMA Trailers Stirling Property - Marrero, LA
FEMA Trailers Treme Center	FEMA Trailers Progressive Baptist - Marrero



ADG HURRICANE RECOVERY PROJECTS

McNeese State University
General Mold Remediation
Lake Charles, Louisiana

Department Health and Hospitals Briscoe
Center
General Mold Remediation
Lake Charles, Louisiana

Department Health and Hospitals
J. Bennett Johnston Center
General Mold Remediation
Lake Charles, Louisiana

Office of Motor Vehicles
General Mold Remediation
Lake Charles, Louisiana

The Louisiana Universities Marine Consortium
(LUMCON)
General Mold Remediation
Cocodrie, Louisiana

East Broussard / Forked Island School
Hurricane Repairs
Forked Island, Louisiana

Henry Gymnasium and Classrooms
Repairs and Renovations
Henry, Louisiana

Opelousas High School
Hurricane Repairs
Opelousas, Louisiana

5500 Veterans Boulevard
Hurricane Katrina Assessment
New Orleans, Louisiana

Jennings American Legion Hospital
Hurricane Rita Assessment Jennings,
Louisiana

Captain Morgan's Rum Visitor Center
Hurricane Maria Repairs
St. Croix, USVI

Jackson Barracks
Joint Force Headquarters
New Orleans, Louisiana

Louisiana Superdome
New Orleans, Louisiana
Hurricane Related Assessment and Repairs

Dillard University
New Orleans, Louisiana
Hurricane Related Assessment and Repairs

Regional Transit Authority
Repairs and Renovations
New Orleans, Louisiana

Hyatt Regency Hotel
Repairs and Renovations
New Orleans, Louisiana

NOAA Pascagoula Lab
Hurricane Assessment/Repairs
Pascagoula, Mississippi

NOAA Galveston Lab Hurricane
Assessment/Repairs Galveston,
Texas

NOAA Estuarine Habitat & Coastal Fisheries Ctr Hurricane
Assessment/Repairs
Lafayette, Louisiana

NOAA OAR - AOML
Hurricane Assessment/Repairs
Miami, Florida

NOAA Florida Keys / NMS/NOS
Hurricane Assessment/Repairs
Florida Keys, Florida

NOAA Dr. Nancy Foster Center
Hurricane Assessment/Repairs
Key West, Florida

Total Administration Building
Hurricane Maria Repairs
St. Thomas, USVI



ADG HURRICANE RECOVERY PROJECTS

Burton Coliseum New Arena
Hurricane Repairs
Lake Charles, Louisiana

Burton Coliseum
Hurricane Repairs
Lake Charles, Louisiana

Burton Coliseum Livestock Barn
Hurricane Repairs
Lake Charles, Louisiana

Plaquemines Parish School Board
Hurricane Katrina Damage Assessment
Plaquemines, Louisiana

Hercules Drilling Hurricane
Rita Assessment New
Orleans, Louisiana

Phoenix High School Hurricane
Katrina Renovations
Plaquemines, Louisiana

Belle Chase Library
Hurricane Katrina Renovations
New Orleans, Louisiana

St. Maria Goretti Church
Hurricane Katrina Repairs
New Orleans, Louisiana

Mallard Cove Clubhouse Repairs
Lake Charles, Louisiana

Lake Charles Racquet Club Repairs
Lake Charles, Louisiana

Lake Charles Memorial Hospital
Hurricane Rita Assessment MEP
Infrastructure Mitigation Lake
Charles, Louisiana

Lake Charles Memorial Hospital
Hurricane Laura Assessment
Lake Charles, Louisiana

Celebration Church
Hurricane Katrina Repairs
Metairie, Louisiana

United States Custom House
Hurricane Katrina Repairs Survey
New Orleans, Louisiana

Rockefeller Wildlife Refuge Residences
Hurricane Repairs
Cameron Parish, Louisiana

Rockefeller Wildlife Refuge West End Dorm
Hurricane Repairs
Cameron Parish, Louisiana

Williams Administration Building
Johnson Bayou, Louisiana

Calcasieu Parish Juvenile Detention Center
Hurricane Repairs
Lake Charles, Louisiana

Calcasieu Parish Police Jury
Magnolia Building Window/Wall Replacement Hurricane
Repairs

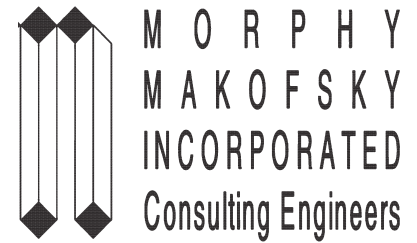
Calcasieu Parish Police Jury
901 Lakeshore Drive
Hurricane Laura Repairs

Calcasieu Parish Police Jury
Courthouse Emergency Cooling
Hurricane Laura Repairs

Calcasieu Parish Police Jury
Burton Coliseum Emergency Cooling
Hurricane Laura Repairs

South Cameron High School
New Facility
Cameron, Louisiana

Louisiana State Wildlife Management Area
Hurricane Rita Repairs
Intracoastal City, Louisiana



NOTABLE PROJECT EXPERIENCE

THE ROOSEVELT HOTEL

This historic hotel in New Orleans had its basement flooding and its roof damaged during Hurricane Katrina. MMI made the initial assessment of the damage four weeks after the storm. In the next few months, we conducted more in-depth inspections to successfully complete repair documents. Among other design tasks, chillers were relocated from the basement and redesigned, the interior basement walls were inspected to determine if they could be repaired or had to be demolished, and loads were calculated to support the relocation and replacement of several large pieces of mechanical equipment.

CHARITY HOSPITAL ASSESSMENT

The extent of our evaluation included site investigations and observations, and a computer analysis of the existing structure, as informed by the original structural drawings. After completing our review, we completed an assessment of the existing conditions, based upon our observations and our evaluation of the analysis. A structural analysis of the 3-dimensional building model was undergone. This analysis reviewed the existing structure, both from a global and a localized standpoint. The global analysis focused on the structure as a whole and its load carrying capabilities under current wind and seismic loads, along with code required gravity loading due to anticipated dead loads and code required live loads. The localized analysis observed these same loading scenarios and the effects that this loading would have on typical bays, given the existing framing in place. In addition to our structural analysis and in order to inform our recommendations, site investigations were undergone. Our primary concern in these investigations was to observe anomalies and deficiencies in the original construction, subsequent structural modifications and damages which may have occurred during the life of the building. Additional time was spent to observe the condition of the exterior façade and its backup materials. Upon completing our structural analysis and site investigations, time was taken to review the results of these efforts and to review the project as a whole.



OHR O-KEEFE MUSEUM

MMI is the Engineer of Record for the Ohr O'Keefe Museum in Biloxi, MS. The separate buildings that comprise the museum were in various stages of construction when Hurricane Katrina hit the area in August of 2005. We were tasked with assessing and repairing the seven main buildings. The Center for Ceramics was the most damaged structure as it was in a delicate stage of construction at the time of the storm. It was later determined that the roof structure along with most of the framing should be replaced because of the corrosion that resulted from prolonged exposure to the elements. MMI redesigned the building to account for the museum's changing needs and to replace/repair areas that needed attention.



ST. MARTIN MANOR

Morphy Makofsky, Inc. provided structural and civil engineering services for the renovation and addition of the historic building. The existing historic facility was built in 1872, with additions made in 1879 and 1920. The two ancillary structures appear to have been constructed during the original 1872 construction. The scope of work for the existing facilities included an extensive demolition and repair program, with removal of all non-load bearing elements and finishes and replacement of many of the load carrying elements as well. Stabilization of existing deteriorated masonry was also a substantial portion of the work effort involved. Prior to Hurricane Katrina, this campus served as an assisted living facility for the elderly. This is the same use which the restored facility will serve. The new building is a 5 story concrete building, consisting of concrete construction with post-tension floor slabs and a light gage metal truss roof.

Additionally, because the value of repairs and improvements triggered Code compliance requirements as stated in the IBC, the existing building was also required to be compliant with the IBC in general, including the current wind code requirements. This required the retrofitting of uplift connections and an effective lateral resisting system, such that the existing building's framing elements could properly transfer wind forces through the building to the foundation.



DISASTER RELATED PROJECT EXPERIENCE

PARKS AND PARKWAYS

MMI assisted the architectural design team in an in-depth verification of FEMA Project Worksheets for all buildings in the Parkways complex. This included field verification of damage extents, quantities and magnitudes, as well as extensive reporting of his findings. This also included direct interaction with City and FEMA officials to debate modification of the FEMA worksheets and to expedite the review process for these modifications. Successful negotiations with FEMA resulted in the addition of complete building replacement for one building which originally included only nominal repairs. Through in-depth structural review, using advanced computer modeling, the building was found to be structurally unsound by modern standards. This was a direct result of code related research, understanding of the FEMA PW process and a persistent approach to presenting results to FEMA. The final results of this analysis were composed into a comprehensive document, with full appendices, which was eventually presented to FEMA.

OAKWOOD SHOPPING CENTER FIRE DAMAGE INSPECTION

The purpose of our inspection was to view fire damage, resulting from purported looting that took place after Hurricane Katrina, and make a structural assessment of the damage caused by the fire in order to define boundaries and determine what areas are undamaged and can be salvaged or should be demolished. Our inspection was primarily focused on the areas outside of the heavily fire damaged area where damage to the integrity of the framing was not readily apparent. This was based on our assumption that the most heavily damaged area would be required to be demolished and rebuilt. MMI then prepared repair documents and performed contract administration services until the renovation was completed.

FEDERALLY DECLARED NATURAL DISASTER EXPERIENCE

Condition Assessments for RSD and OPSB:

Edgar P. Harney Elementary	Henry C. Schaumburg Elementary
Village de L'est Elementary	Julius Rosenwald Elementary
Albert Wicker Elementary	Thurgood Marshall Elementary
Gaudet/Lake Forest Charter	William J. Fischer Elementary
James Johnson Elementary	Edna Karr High School & Gym
Lusher Fortier Charter	Warren Easton
Lusher Elementary	Bethune
Audubon	McDonough 35
Agnes L. Baudit Elementary	Laurel Elementary
Sylvanie F. Williams Elementary	McDonough 28 Middle School
Schwarz Alternative School	McDonough 7 Elementary School
Martin Luther King Charter School	Samuel J. Green Middle School
Crossman Elementary	Henry Allen Elementary
Andrew Jackson Elementary	Dwight D. Eisenhower Elementary
Sarah T. Reed High School	O. Perry Walker High School
Gentilly Terrace Elementary	McDonough 32
Live Oak Elementary	Lafayette Elementary
Murray Henderson	McDonough 28 Lightning Strike
Clark High School	Langston Hughes Masonry Wall
Benjamin Banneker Elementary	Magnolia School Whitehall
John McDonough Gym	

Community Development Block Grant (CDBG):

B.W. Cooper/Marrero Commons
 Crescent Club Apartments
 Civic Lofts Apartments
 930 Poydras Development
 St. Martin Manor Renovation and New Construction



DISASTER RELATED PROJECT EXPERIENCE

FEDERALLY DECLARED NATURAL DISASTER EXPERIENCE (cont)

Major Renovation or New Construction

Andrew Wilson Elementary (LEED Gold)
 Lake Area High School
 Joseph A. Craig Elementary
 William Frantz Elementary
 Little Woods Elementary
 Booker T. Washington
 Carter G. Woodson Elementary School
 Livingston High School (Design only)
 Carver High School (Design/Build)
 Paul L. Dunbar Elementary
 Fisk-Howard Elementary
 Paul B. Habans Elementary (Design/Build)
 Sherwood Forest Elementary (Design/Build)
 Drew Elementary School
 James Audubon School
 Eleanor McMain Gymnasium Facade Repair
 PK-8 at Kenilworth Park
 West St. John Elementary
 Patrick Taylor Academy
 Lyon Elementary School Addition
 St. Martin's IDEA Lab
 O.W. Dillon Elementary
 Phoenix High School
 Archbishop Hannan Library and Classroom
 South Plaquemines High School
 South Plaquemines Elementary
 Belle Chasse Middle School Addition
 Pontchartrain ES/Tchefuncte MS
 Live Oak High School
 John Quincy Adams Middle School
 Fontainebleau Jr. High
 Harry Hurst Middle School
 Lusher Fortier High Renovation

REFERENCES

Respect. Integrity. Client Satisfaction. Excellence. Duplantis Design Group's (DDG) philosophy is simple — maximize employee potential, and it will lead to maximized customer satisfaction. In order to achieve this goal, the firm provides a challenging work environment fostering a sense of accountability into each employee. This in turn fuels the passion that has driven DDG to become a leader in the industry, enabling the firm to maintain long-term client relationships. The firm's reputation for personal and professional integrity and competence is proven through a repeat business rate of over 90%.



ST. TAMMANY PARISH GOVERNMENT

Kelly Rabalais; Chief Administrative Officer
21454 Koop Drive; Suite 2F; Mandeville, LA 70471
985.898.2445

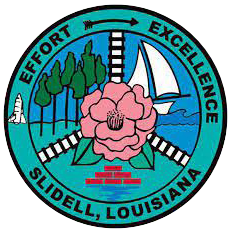
Services provided: Providing services since 2008 - civil engineering, water resources, modeling, project administration and/or construction administration for projects included, but not limited to watershed management, master plans, drainage studies and design, coastal & flood risk reduction planning & marsh creation



LAFOURCHE PARISH GOVERNMENT

James Barnes; Deputy Public Works Department
402 Green Street; Thibodaux, LA 70301
985.637.5245

Services provided: DDG has worked with Lafourche Parish on several projects such as 2012 FEMA/HMGP Project Management Services, Delta Woods Drainage Improvements, Jesse Dufrene Storm Drainage Pump Station, Industrial Bulkhead, Timberland Storm Drainage Pump Station, hurricane damage assistance, road drainage improvements and many other projects.



CITY OF SLIDELL

Blaine Clancy; Engineering Department
2055 Second Street; Slidell, LA 70458
985.646.4270

Services provided: DDG has worked with the City of Slidell on many projects such as the CDBG W-14 Drainage Lateral and Water Sewerage Improvements and Rufus Viner Community.

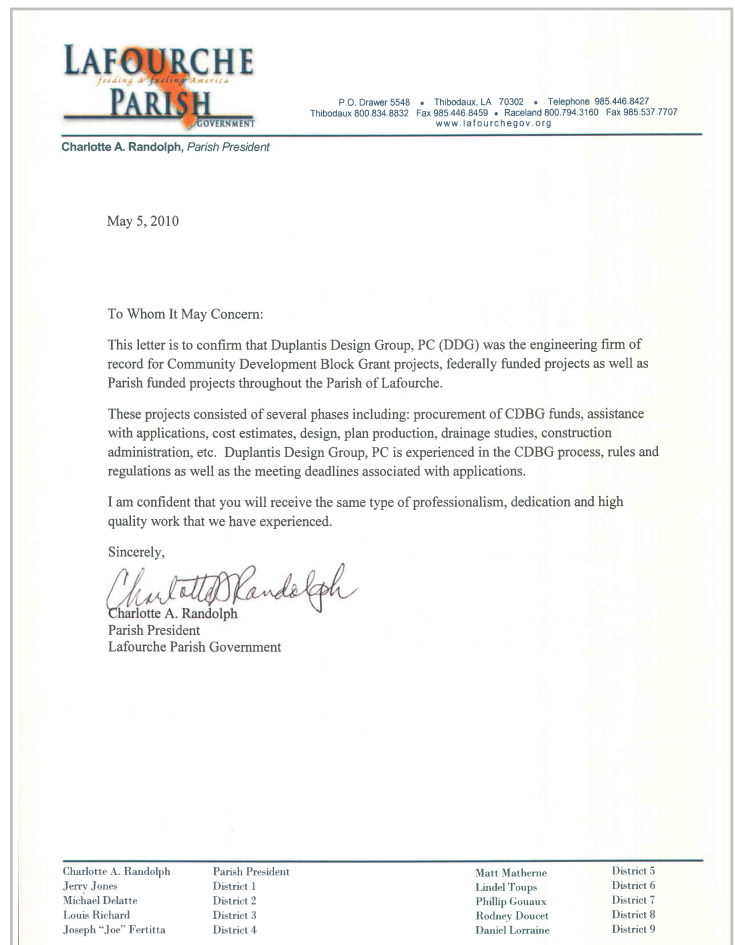
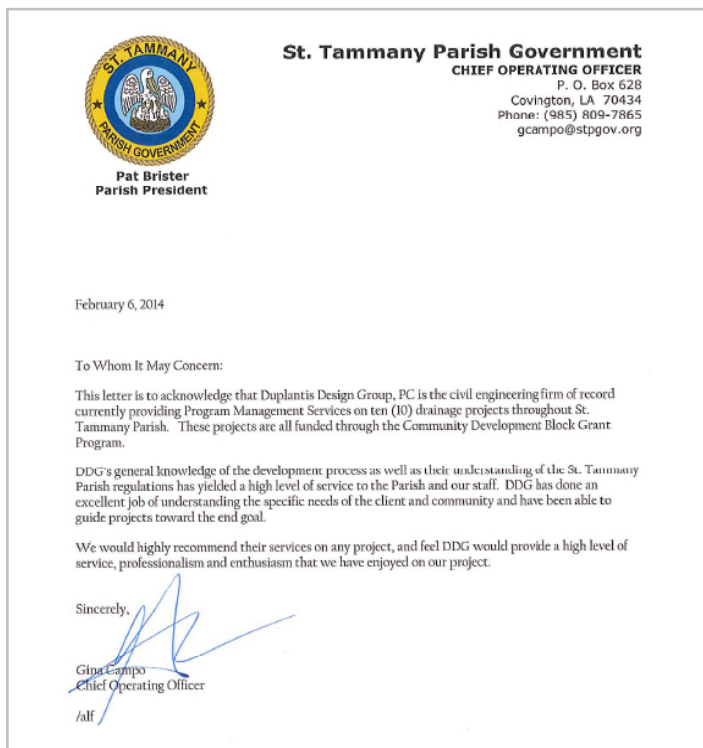
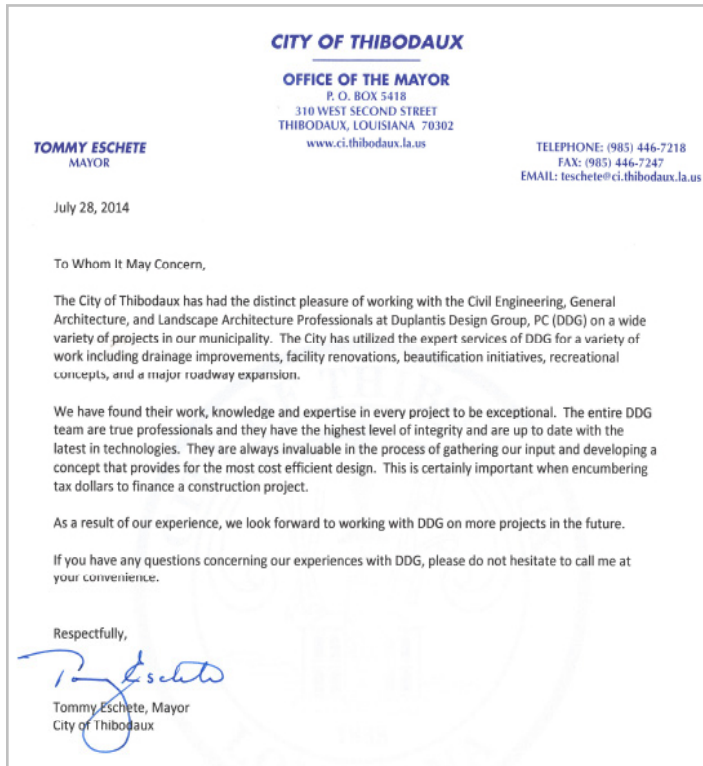


TERREBONNE PARISH GOVERNMENT

Greg Bush and David Rome; Public Works Department
P.O. Box 2768; Houma, LA 70361
985.873.6735

Services provided: DDG has worked with Terrebonne Parish on projects such as the Department of Public Works Administration Building, hurricane damage assistance, road drainage improvements and many other projects.

LETTERS OF RECOMMENDATION



COMPLIANCE WITH POLICIES, PROCEDURES AND REQUIREMENTS



1. At least one professional civil engineer registered in the State of LA shall have a minimum of ten years of experience in Hurricane Disaster Recovery A/E Services and Damage Assessment.



2. At least one professional electrical engineer registered in the State of LA shall have a minimum of ten years of experience in working on public infrastructure.



3. At least one professional land surveyor registered in the State of LA shall have a minimum of ten years of experience in surveying public infrastructure and subsurface utility engineering.



4. At least one licensed professional architect shall have a minimum of ten years' experience in public building and facilities infrastructure.



5. Proposed personnel shall have the ability to prepare damage assessments and FEMA project worksheets related to public infrastructure.



6. Proposed personnel shall have the ability to perform detailed cost estimating related to damage assessment, mitigation, resilience and flood proofing for public infrastructure.

DDG is committed to providing quality service and takes pride in developing long standing relationships with our clients. Our extensive diversified public sector experience along with our flexible resources allows us the opportunity to extend quality service and timely contract completion. At DDG, we recognize that our clients' schedules are a fundamental and critical success factor for their projects - particularly when it involves grant monies with time constraints for expenditure. To provide the highest level of service to our clients, our firm keeps up with the most recent state and local codes, local ordinances, and the Louisiana Public Bid Law. This knowledge, along with our design philosophy of providing the highest level of professional design services, maximizes the opportunity for our projects to be built correctly, on time, and within budget.

36

LICENSED
PROFESSIONALS

24

YEARS
OF GRANT
MANAGEMENT
EXPERIENCE

42

COMPLETED
GRANT
FUNDED
PROJECTS

35⁺

STATE,
PARISH &
FEDERAL
CLIENTS



SECTION 3 | UNDERSTANDING OF PROJECT / FAMILIARITY

APPROACH & METHODOLOGY

DDG has a strong reputation of successfully implementing program management and design of local projects through federal funds, including FEMA, LA Recovery Funding, Community Development Block Grant (CDBG), CDBG-DR or FEMA Hazard Mitigation Grant Program (HMGP). Our professionals are well-versed in the guidelines, regulations, compliance requirements and documentation requirements of the National Flood Insurance Program (NFIP), National Fire Protection Association (NFPA), Americans with Disabilities Act Accessibility Guidelines (ADAAG), and International Building Codes during the pre-design, design, and construction phases; specifically as it relates to the assessment of storm damage and the subsequent process of reimbursement.

For example, DDG has worked with FEMA on the design of multiple temporary trailer site developments as part of a design-build team immediately after Hurricane Katrina. In 2008, after Hurricanes Gustav and Ike, DDG began working with Lafourche Parish Government on HMGP applications for 18 pump station improvements throughout Lafourche Parish. DDG attended several meetings with FEMA and GOHSEP personnel to discuss the additional project applications and provided subsequent information needed for FEMA to complete the benefit cost analysis. DDG also assisted the parish with responding to several request for information letters obtained from FEMA and GOHSEP throughout their respective review of the project applications.

DDG is dedicated to providing the highest level of design services that fully considers each client's needs. We operate a technologically-sophisticated practice that is expertly equipped to meet complex project-specific and regulatory requirements. We are experienced in addressing the unique challenges and opportunities presented by governmental regulations, neighborhood considerations, environmental issues, site conditions, project scope and budget. We design projects to meet unique situational standards and adapt our planning to individual projects. In working with clients that include public entities to Fortune 500 companies, we incorporate our expertise into the process to design a functional and aesthetically pleasing product that exceeds the clients' expectations. No matter where we work, our team is consistently creative, productive and collectively focused on exceeding client expectations.

At DDG, we pride ourselves on timely service and recognize that our clients' schedules are a fundamental and critical success factor for their projects – particularly when it involves grant monies with time constraints for expenditure. As a result, we realize it is important for all parties to understand the time schedule from day one, and we utilize our staff size, experience and workload to best suit the project schedule.

To provide the highest level of service to our public sector clients, our firm has a thorough knowledge of state and local codes, local ordinances and the Louisiana Public Bid Law. This knowledge, along with our design philosophy of providing the highest level of professional design services, maximizes the opportunity for our projects to be built correctly, on time and within budget.

Next, we recognize that in order for our clients' projects to be successful, communication is of the utmost importance. We truly believe that communication is a "team sport" from understanding and communicating your goals and ideas during the project, to sharing design input with all parties involved, to working together with the contractor during construction. As a result, effective and abundant communication is what keeps the team's interests aligned.

Lastly, implementing a thorough quality control process is critical to a project's success. Our firm's quality assurance and quality control procedures ensure that each phase of the project, and the drawings and documentation associated with it, will be reviewed by principal-level professionals. These periodic reviews take place not only to ensure accuracy and thoroughness of our documents, but also for adherence to the project goals and parameters; which, in turn, results in fewer design-related change orders during construction. Quality control continues through the construction phase with periodic site visits and thorough completion inspections by professional-level staff members to ensure that the project is being constructed according to the documents and in accordance with governmental requirements.

Architecture Design

Over the years DDG has responded on numerous occasions to the challenges presented by communities facing the daunting tasks associated with hurricane recovery. Whenever faced with these unfortunate situations, DDG has worked diligently to provide effective design solutions that can be implemented quickly, inexpensively and with minimal disruption to existing community operations and other recovery efforts. DDG has extensive experience working with various federal, state and local agencies coordinating solutions during the recovery phase.

Civil Engineering Design

We routinely prepare project scopes, collect and manipulate data for design purposes using GIS and AutoCAD, perform conceptual designs, and prepare deliverables requested by our clients whether they be project reports, drawings, technical specifications, or cost estimates. From the retrofit of local drainage infrastructure to the design of regional detention facilities, to conveyance improvements in major waterways, to complete drainage designs for thousands of acres of development, we have done it all.

Surveying

DDG raises the bar by utilizing the latest and most efficient methods for collecting and staking data points for property and topographic surveys. DDG is committed to staying at the forefront of technology and uses the latest GPS, Remote Sensing, Robotic Total Station, and Scanning Stations to ensure that our clients receive accurate and precise data. Manual. Our team is particularly efficient with pre-processing model input data such as LiDAR and topographic survey data using both CAD and GIS tools.

Benefit Cost Analyses

DDG has experience with development of Benefit Cost Analyses (BCA) for flood damage reduction projects. DDG can assist with quantifying risk to the public through inventory of structures, assigning valuations, selecting and applying damage-depth relationships, and quantifying total damages based on the probability of flooding. We have developed customized tools to determine Benefit Cost Ratios in accordance with FEMA standards which will be similar to those required through the HMGP program. We are also capable of using standard software for risk reduction analysis such as HEC-FDA.

Environmental Permitting

DDG has significant experience with permitting services including preliminary design, data consolidation, application preparation and submittal, and facilitating correspondence with appropriate agencies and stakeholders. Previous permitting experience includes USACE Section 404, LDEQ, LDWF, OCM and LDNR. Additionally, DDG can provide wetland permitting services for submission for an approved or preliminary jurisdictional determination from the USACE.

Public Engagement

DDG is extremely experienced with public engagement for a client and their project, including administering the logistics of any public meeting, to coordinating and running the meeting to solicit input from stakeholders. DDG has undertaken some innovative community engagement techniques including community conversations, round table discussions on restoration priorities, and formal public comment solicitation opportunities in order to make sure that any project moves forward has solicited significant public input, accounts for concerns of stakeholders, and is transparent to its adoption.

Bidding & Construction Management

DDG has provided bidding assistance and construction administration services on a wide array of drainage and flood protection projects including contractor supervision, owner representation, work in remote locations, keeping the client closely informed of project status, development of all necessary documents and notices, verification of pay estimates and closeout. These experiences help to assure clients of construction progress, foresee any challenges, and engage on the clients behalf on construction administration issues given our experience with understanding contractor negotiations.

FEDERAL & STATE FUNDED PROJECT EXPERIENCE

Since inception, DDG has compiled a large list of successfully completed federally funded projects for numerous governmental and public facilities, which is demonstrated below. This knowledge, along with a design philosophy of providing the highest level of professional services, maximizes the opportunity for projects to be built correctly, on time, and within budget. A summary of DDG's federally funded projects are provided below.

2020 - City of Baker - Bayou Brushy Drainage Improvements (HMGP)
 2019 - Lafayette Consolidated Government - Derby Heights Drainage (CDBG)
 2016 - St. Tammany Parish Government, W-14 Widening and Fritchie Marsh Creation (HMGP)
 2014 - City of Broussard; Street Construction (CDBG)
 2014 - City of Broussard; Water & Sewer Lift Station Service for IPT Global (CDBG)
 2013 - Terrebonne Parish Consolidated Government, Department of Public Works Administration Building (CDBG)
 2013 - St. Charles Parish Government, Emergency Operations Center (CDBG)
 2013 - Lafourche Parish Government, Elevation Program Project (HMGP)
 2013 - Assumption Parish Police Jury, Administrative Building (CDBG)
 2012 - Terrebonne Parish Consolidated Government, Juvenile Justice Complex (CDBG)
 2012 - Assumption Parish Police Jury, Community Center (CDBG/DRU)
 2012 - Assumption Parish Police Jury, Bayou L'Ourse Community Center (CDBG/DRU)
 2011 - City of Slidell, Rufus Viner Community Center (CDBG)
 2011 - Lafourche Parish School Board, Thibodaux Elementary School Classroom Addition (CDBG)
 2011 - St. Tammany Parish Government, Drainage Improvements (LRA/CDBG)
 2011 - Lafourche Parish Government, Timberland Pump Station Phase I (HMGP)
 2011 - Lafourche Parish Government, Pointe-aux-Chenes Pump Station Improvements Phase I (HMGP)
 2010 - St. Tammany Parish Government, Lower 15 Drainage Improvements (CDBG)
 2010 - Plaquemines Parish Government, East Bank Sewer Improvements (CDBG)
 2010 - Morgan City Housing Authority, Brownell Renovations Phases I, II, & III (ARRA/HUD)
 2010 - St. Charles Parish Housing Authority, Renovations (HUD)
 2010 - Lafourche Parish Government, Jesse Dufrene Pump Station/Gheens Area Drainage Improvements (HMGP)
 2009 - City of Slidell, Drainage Projects (CDBG)
 2009 - Lafourche Parish Government, Various Turn Lane Improvements (ARRA)
 2009 - Terrebonne Economic Development Authority, Bayou Region Cold Storage Facility (OCD)
 2009 - St. Tammany Parish Government, Program Management Services Drainage Project (LRA/CDBG)
 2009 - City of Thibodaux, Beautification Projects (ARRA)
 2009 - Lafourche Parish Housing Authority, Independent Cost Verification at Multiple Sites (HUD)
 2009 - Lafourche Parish Government, Sewer Rehabilitation to Marydale/Lewistown/Rita Communities (HMGP)
 2009 - Diocese of Houma-Thibodaux, Emergency Repairs to High Schools (FEMA)
 2009 - Terrebonne Parish Consolidated Government, Government Tower Re-Roofing (FEMA)
 2009 - Lafourche Parish Government, Alidore Water System Waterline Improvements (CDBG)
 2008 - Lafourche Parish Government, Parishwide Pump Station Mitigation (HMGP)
 2008 - Lafourche Parish Government, Parish Facility Hurricane Damage Assessment (HMGP)
 2008 - Lafourche Parish School Board, Hurricane Repairs to 13 Schools (HMGP)
 2002 - 2008 - Houma-Terrebonne Housing Authority, 100% Physical Needs Assessment at Bayou Towers and Senator Circle (HUD)
 2008 - 2013 - St. Martin Parish Government; Street Improvements (CDBG)*
 2007 - Terrebonne Parish Consolidated Government, Transit Office and Bus Maintenance Facility (FTA)
 2005 - Diocese of Houma-Thibodaux, Emergency Repairs (FEMA)
 2005 - Houma-Terrebonne Housing Authority, Hurricane Damage Assessments and Independent Cost Verification at Bayou Towers and Senator Circle (HUD)
 2004 - Lafourche Parish Government, Drainage Improvement Project (CDBG)
 2002 - City of Thibodaux, Road Rehabilitation (CDBG)
 2000 - City of Thibodaux, Drainage Rehabilitation (CDBG)
 1999 - City of Thibodaux, Rehabilitation of Water and Gas Distribution Systems (CDBG)



SECTION 4 | AGENCY PROJECT EXPERIENCE &
CURRENT WORKLOAD

AGENCY PROJECT EXPERIENCE

Per the RFQ, this section includes report listings of DDG's past performance with governmental entities, and similar type projects with local private, industrial, and commercial clients. With both our public and private sector clients, DDG's quality of work, compliance with project schedules, and overall client satisfaction are always our top priority.

GOVERNMENTAL CLIENTS (include, but not limited to)

- * St. John the Baptist Parish Government
- * Coastal Protection and Restoration Authority
- * Louisiana Stadium and Expedition District
- * Facility Planning and Control
- * Department of Transportation Development
- * Terrebonne Parish Consolidated Government
- * Lafourche Parish Government
- * City of Thibodaux
- * Lafourche Parish Water District No. 1
- * South Central Planning and Development Commission
- * Regional Planning Commission
- * Assumption Parish Police Jury
- * St. Tammany Parish Government
- * St. Tammany Parish Gravity District No. 5
- * City of Covington
- * City of Slidell
- * St. Mary Parish Government
- * St. John the Baptist Parish Government
- * St. Charles Parish Government
- * Lafayette Consolidated Government
- * City of Broussard
- * St. Martin Parish Government
- * Iberia Parish Government
- * North Lafourche Levee District
- * BREC - Parks and Recreation in East Baton Rouge Parish
- * City of Ponchatoula
- * Iberville Parish Government

CURRENT WORKLOAD + CAPACITY

In over 24 years since our founding, our unwavering commitment to excellent client service has allowed DDG to grow into a multi-disciplinary regional firm with six offices and nearly 100 full time employees. DDG's team members span Baton Rouge, Covington, Lafayette, New Orleans, Mobile, Thibodaux, and Houston. DDG's staff has the ability to handle projects of all types and sizes.

Fully leveraging the capacity of DDG's staff will be achieved on an understanding of each individual's expertise, communication of roles and responsibilities, clear assignments, and establishing attainable project milestones. With the key individuals who are assigned to this project backed by resources who are all Louisiana-based, we are dedicated to providing reliable, responsive service on this project. With a total Louisiana staff of 92 individuals, annual revenues of over \$13M, and with the ability to execute hundreds of projects each year, DDG will provide the leadership necessary to ensure the work is delivered on time, on budget, and to the quality expected by St. John the Baptist Parish.

DDG has the staff resources available to assign team members to various projects and begin work immediately. At DDG, we pride ourselves on timely service and recognize that our clients' schedules are a fundamental and critical success factor for their projects – particularly when it involves grant monies with time constraints for expenditure. As a result, we realize it is important for all parties to understand the time schedule from day one, and we utilize our staff size, experience and workload to best suit the project schedule.



SECTION 5 | CORPORATE RESOLUTION

CORPORATE RESOLUTION

(For Corporations Only)

EXCERPT FROM MINUTES OF MEETING OF THE BOARD OF DIRECTORS OF
Duplantis Design Group, PC, INCORPORATED.

AT THE MEETING OF DIRECTORS OF Duplantis Design Group, PC,
INCORPORATED, DULY NOTICED AND HELD ON July 12, 2021,
A QUORUM BEING THERE PRESENT, ON MOTION DULY MADE AND SECONDED. IT WAS:

RESOLVED. THAT Matthew K. Newchurch, PE, MBA, BE AND IS HEREBY APPOINTED, CONSTITUTED
AND DESIGNATED AS AGENT AND ATTORNEY-IN-FACT OF THE CORPORATION WITH FULL POWER AND
AUTHORITY TO ACT ON BEHALF OF THIS CORPORATION IN ALL NEGOTIATIONS, BIDDING, CONCERNS
AND TRANSACTIONS WITH THE PARISH OF ST. JOHN THE BAPTIST OR ANY OF ITS AGENCIES,
DEPARTMENTS, EMPLOYEES OR AGENTS, INCLUDING BUT NOT LIMITED TO THE EXECUTION OF ALL BIDS,
PAPERS, DOCUMENTS, AFFIDAVITS, BONDS, SURETIES, CONTRACTS AND ACTS AND TO RECEIVE AND
RECEIPT THEREFOR ALL PURCHASE ORDERS AND NOTICES ISSUED PURSUANT TO THE PROVISIONS OF
ANY SUCH BID OR CONTRACT, THIS CORPORATION HEREBY RATIFYING, APPROVING, CONFIRMING AND
ACCEPTING EACH AND EVERY SUCH ACT PERFORMED BY SAID AGENT AND ATTORNEY-IN-FACT.

I HEREBY CERTIFY THE FOREGOING TO BE A TRUE AND CORRECT COPY OF AN EXCERPT OF THE MINUTES
OF THE ABOVE DATED MEETING OF THE BOARD OF DIRECTORS OF SAID CORPORATION, AND THE SAME
HAS NOT BE REVOKED OR RESCINDED.



President

Signature

Title

09-27-2021

DATE