

DATE: 7/26/2018
BID NO.: 50-00123751

INVITATION TO BID
THIS IS NOT AN ORDER

Page: 4

JEFFERSON PARISH

PURCHASING DEPARTMENT
P.O. BOX 9
GRETNA, LA. 70054-0009
504-364-2678

VENDOR: 27118 BLANK BID COPY VENDOR

BUYER: CGASPER

As per LSA-RS 47:301 et seq., all governmental bodies are excluded from payment of sales taxes to any Louisiana taxing body. Quotations shall be based on F.O.B. Agency warehouse or jobsite, anywhere within the Parish as designated by the Purchasing Department.

JEFFERSON PARISH reserves the right to cancel all or any part of an order if not shipped promptly. No charges will be allowed for parking or cartage unless specified in quotation. The order must not be filled at a higher price than quoted. JEFFERSON PARISH reserves the right to cancel at any time and for any reason by issuing a THIRTY (30) day written notice to the contractor.

JEFFERSON PARISH is expecting all products to be new and all work to be done in workman-like manner, according to standard practices. Any deviations or alteration from the specifications must be indicated on the bid form for each item and upon request, product data for same must be submitted by the time specified by the Purchasing Department.

DELIVERY: FOB JEFFERSON PARISH

INDICATE DELIVERY DATE ON EQUIPMENT AND SUPPLIES

3 weeks

INDICATE STARTING TIME (IN DAYS) FOR CONSTRUCTION WORK

INDICATE COMPLETION TIME (IN DAYS) FOR CONSTRUCTION WORK

In the event that addenda are issued with this bid, bidders MUST acknowledge all addenda on the bid form. Bidder must acknowledge receipt of an addendum on the bid form as indicated. Failure to acknowledge any addendum on the bid form will result in bid rejection.

Acknowledge Receipt of Addenda: NUMBER: _____
NUMBER: _____
NUMBER: _____
NUMBER: _____

LOUISIANA CONTRACTOR'S LICENSE NO.: (if applicable) _____

*** ALL BIDDERS MUST COMPLETE SECTION BELOW ***	
FIRM NAME: <u>Cinisco</u>	
SIGNATURE: (Must be signed here)	TITLE: <u>SALES</u>
PRINT OR TYPE NAME: <u>JEFF DEVILIERA</u>	
ADDRESS: <u>1840 LTA RD</u>	
CITY, STATE: <u>METairie, LA</u>	ZIP: <u>70001</u>
TELEPHONE: <u>(504) 835 7319</u>	FAX: <u>(504) 832 0820</u>
EMAIL ADDRESS: <u>JEFF@Cinisco.com</u>	

TOTAL PRICE OF ALL BID ITEMS: \$ 3523'

INVITATION TO BID FROM JEFFERSON PARISH - continued

BID NO.: 50-00123751

SEALED BID

ITEM NUMBER	QUANTITY	U/M	DESCRIPTION OF ARTICLES	UNIT PRICE QUOTED	TOTALS
1	1.00	EA	<p>16" SER 20 KNIFE GATE VALVE PART NUMBER ACP-20-3434R(E) FOR JEFFERSON PARISH PUMP STATION 3 ELMWOOD.</p> <p>0010 - 16" SER 20 Knife Gate Valve Part #: ACP-20-3434R(E)-16.0-HW</p> <p>Body: Cast Stainless Steel Gate: ANSI 316 SS Uni-Directional Handwheel EPDM Seat Rising Stem</p> <p>One-time purchase with freight included. No labor or installation involved. Part needed for a valve to isolate a pump at the Sauve Pump Station; item is to be delivered to: Elmwood#3 P/S 5400 Caryota Drive Metairie, LA 70003</p> <p>Contact Person: Ben Lepine Phone #: (504)736-6759</p>	3523 -	3523 -
2	1.00	EA	0020 - Freight Charge	 	



Submittal Data Sheet

Date: 07/27/2018

USA

QUOTE NUMBER 114901

I.D. (Rep. Use) 487

REV

PROJ. 16" Knife Gate

Fact. ITEM	Cust. ITEM	QTY	DESCRIPTION
1		1	KGC,16,ES,F1,S2,SMP,S2-EPDM*MN-HD20-CS
Style		KGC	Cast Knife Gate Valve
Size		16	16 Inch (400mm)
Body Style		ES	Extended Service Valve
End Connection		F1	Flanged Drilling; ASME Class 150
Body Material		S2	316 Stainless Steel Cast
Packing		SMP	PTFE Braided Packing to 500° F. (260° C.); (pH Range 0-14)
Gate Material		S2	316 Stainless Steel
Seat Material		EPDM	Terpolymer Of Ethylene Propylene and A Diene to 250° F. (122° C.)
Coating or Paint		4G0	3 mils minimum (non-stainless steel parts) of Blue DeZURIK Enamel on Exterior and Standard (SP10) surface prep
Actuator Type		MN-HD20-CS	Handwheel; 20 In Dia; Carbon Steel Yoke

RELATED DOCUMENTS

A059095	DWG INST KGC ES MN-HD20 14-24"
A046357	DWG VALVE ASSY 2-24" 150 FL KGV
A047224	DWG ACT HDWHL/CHWHL KGC 14-36"
D010411	IM VALVE KGC ES/HD 2-24
D010079	IM ACT MANUAL C&L GV

VALVE SIZE		DIMENSIONS												
INCH	MM	A	B	C	D	E	F	G	H	J	K	L	M	N
14	350	18.75 476	1-8 UNC	8	4	.38 10	10.50 267	.81 21	3.00 76	8.25 210	21.00 533	54.75 1391	40.82 1037	20.00 508
16	400	21.25 540	1-8 UNC	10	6	.38 10	11.75 298	.88 22	3.50 89	8.69 221	24.50 622	58.44 1484	42.38 1076	20.00 508
18	450	22.75 578	1-1/8-7 UNC	10	6	.43 11	12.50 318	.94 24	3.50 89	9.06 230	25.50 648	67.75 1721	49.69 1262	20.00 508
20	500	25.00 635	1-1/8-7 UNC	12	8	.43 11	13.75 349	1.00 25	4.50 114	9.19 233	28.50 724	71.31 1811	51.25 1302	20.00 508
22	550	27.25 692	1-1/4-7 UNC	12	8	.43 11	15.5 394	1.00 25	4.50 114	9.19 233	31.00 787	77.22 1961	55.36 1406	20.00 508
24	600	29.50 749	1-1/4-7 UNC	12	8	.43 11	16.00 406	1.00 25	4.50 114	9.19 233	33.50 851	83.29 2116	59.22 1504	20.00 508

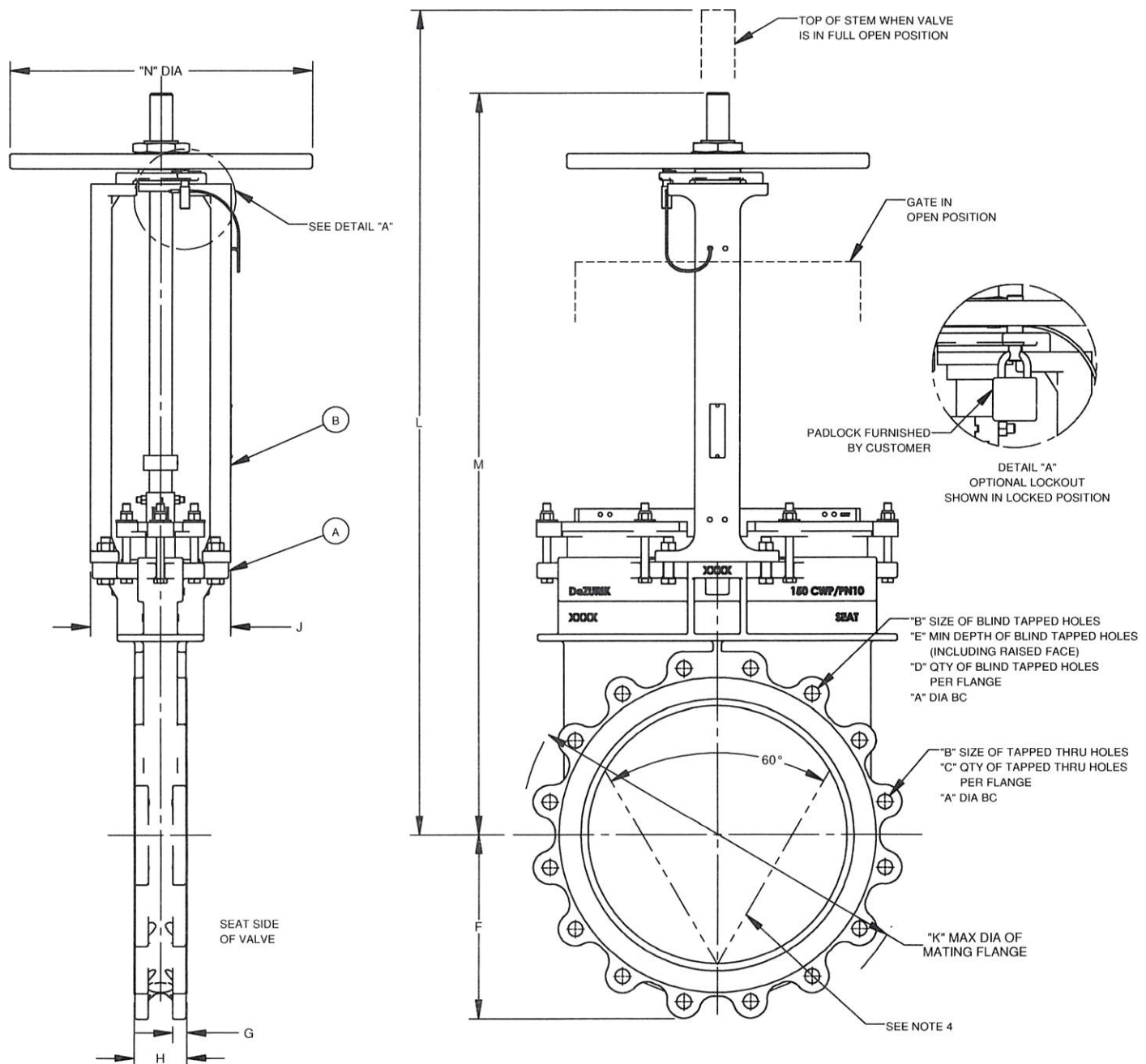
A	VALVE
B	ACTUATOR

NOTE:

1. VALVE IS SHOWN IN CLOSED POSITION.
2. VALVE ORDERED WITH THRU BOLTING HAVE ALL HOLES, EXCEPT THOSE THAT ARE BLIND TAPPED, DRILLED TO ANSI STANDARDS CLASS 125 & 150.
3. DRAWING SHOWS FLANGES TAPPED FOR THE USE WITH ANSI FLANGES, FOR USE WITH OTHER THAN ANSI FLANGES SEE A-52587.
4. VEE ORIFICE OPTION IS SHOWN ON DRAWING WITH PHANTOM LINES.
5. INSTALL THE VALVE WITH THE HIGHER PRESSURE AGAINST THE SIDE OPPOSITE THE SEAT WHEN THE VALVE IS CLOSED; EXCEPT AT THE BOTTOM OF DRY MATERIAL STORAGE VESSELS WHERE THE VALVE SHOULD BE INSTALLED WITH THE SEAT UPWARD.

NOTICE

THIS DRAWING DOES NOT SHOW ACTUATOR ACCESSORIES, IF ACCESSORIES ARE REQUIRED, REFER TO THE APPROPRIATE ACCESSORY INSTALLATION DRAWING FOR DIMENSIONS AND OTHER RELATED INFORMATION.



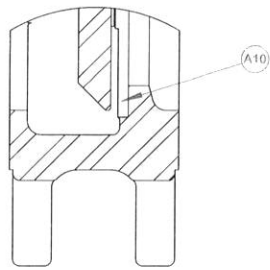
C	PCN# 62561	8/5/2015	SW	AB
B	PCN 62474	03/22/13	SW	DN
A	P.C.N. 62428	1/17/2013	SW	WL
REV.	DESCRIPTION	DATE	APPROVED	DRAWN
REVISIONS				

DeZURIK
Sartell, MN USA 56377
www.dezurik.com

KGC ES KNIFE GATE VALVES SIZE 14 - 24
MN-HD20 HANDWHEEL ACTUATED

DOCT CODE	DRAWN	FHH	APPROVED	RT
C1	CHECKED	RT	DATE	4/20/12

A59095

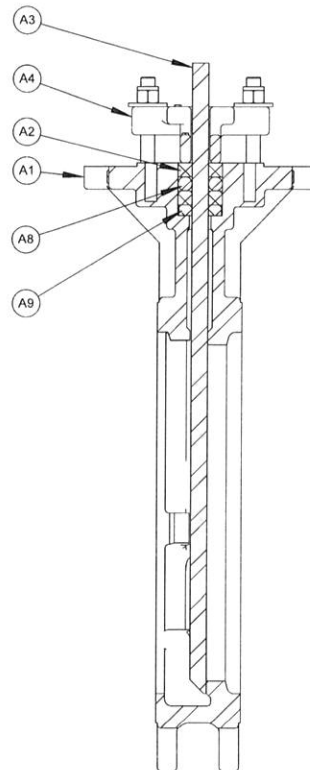
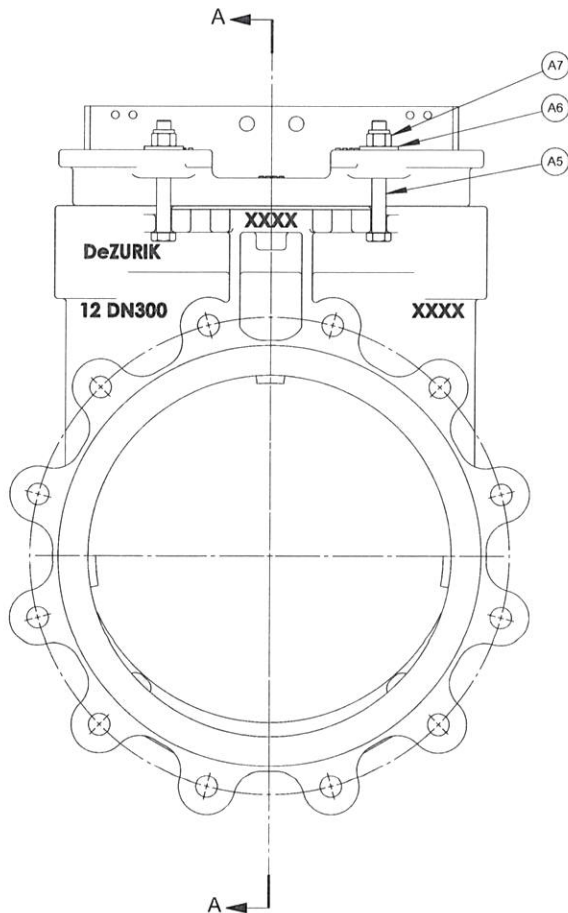


RUBBER SEATED OPTION

NO.	PART NAME	QTY.
A1	BODY	1
A2	PACKING	-
A3	GATE	1
A4	GLAND	1
A5	SCREW (2" - 6" VALVE)	2
A5	SCREW (8" - 12" VALVE)	4
A5	SCREW (14" - 24" VALVE)	6
A6	WASHER (2" - 6" VALVE)	2
A6	WASHER (8" - 12" VALVE)	4
A6	WASHER (14" - 24" VALVE)	6
A7	NUT (2" - 6" VALVE)	2
A7	NUT (8" - 12" VALVE)	4
A7	NUT (14" - 24" VALVE)	6
A8	PACKING CORD	-
A9	ANTI-EXTRUSION RING	1
A10	REMOVABLE SEAT	1

NOTE:

1. WHEN ORDERING PARTS, SPECIFY VALVE SIZE AND MODEL NUMBER FROM DATA PLATE, ALSO GIVE DRAWING NUMBER WITH PART NAME, ITEM NUMBER AND QUANTITY.
2. RECOMMENDED SPARE PARTS ARE ITEMS NO. A2, A8, A9 AND A10.



SECTION A-A

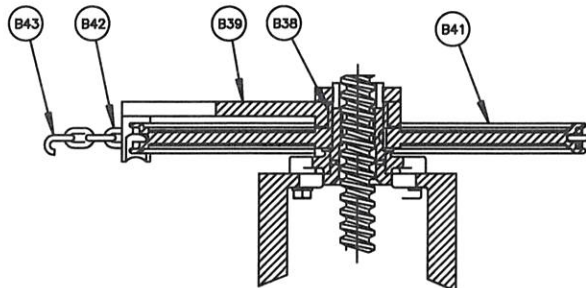
G
 F
 E
 D
 C
 B 62250 9/24/13
 A 61935 6/15/10

DeZURIK
APCO | HILTON
 www.dezurik.com

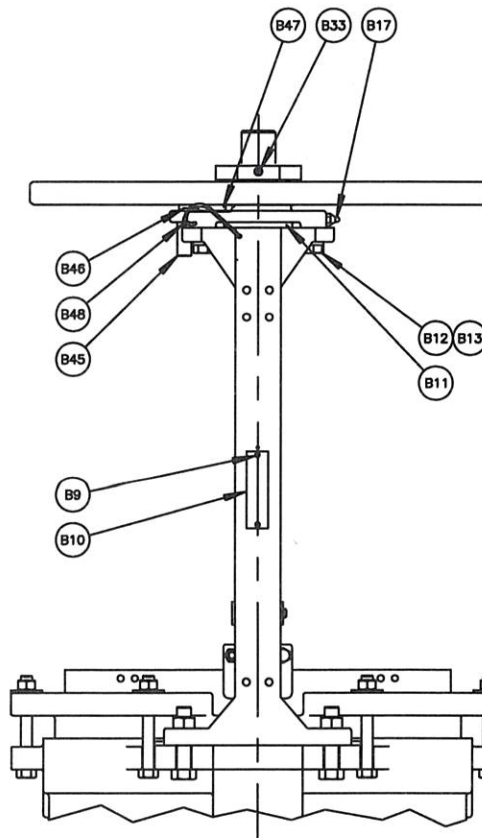
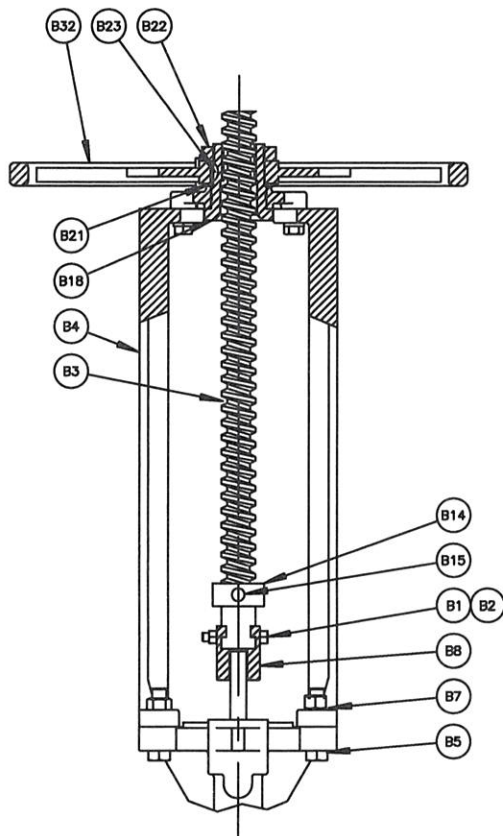
DOCT. CODE C1
 DRAWN CMW
 CHECKED CS
 APPROVED DLT
 DATE 6/18/02

KGC ES VALVE ASSEMBLY 2" - 24"
 FLANGED KNIFE GATE VALVE

A46357



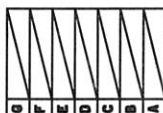
MN-CW_ CHAINWHEEL ACTUATOR
14" THRU 20" VALVES ONLY



NO.	PART NAME	QTY.
B1	SCREW	2
B2	LOCK NUT	2
B3	STEM	1
B4	LEG	2
B5	SCREW	4
B7	NUT	4
B8	CLIP	2
B9	POP RIVET	2
B10	DATA PLATE	1
B11	MANUAL ADAPTOR	1
B12	SCREW	4
B13	LOCKWASHER	4
B14	STOP COLLAR	1
B15	SET SCREW	1
B17	GREASE FITTING	1
B18	YOKE SLEEVE	1
B21	THRUST WASHER	1
B22	NUT	1
B23	KEY	1
B32	HANDWHEEL	1
B33	SET SCREW	1
B38	BEARING	1
B39	CHAIN GUIDE	1
B41	CHAINWHEEL	1
B42	CHAIN	-
B43	CLOSING LINK	1
B45	LOCKOUT PIN (MN-HD_ ONLY)	1
B46	PIN (MN-HD_ ONLY)	1
B47	CABLE (MN-HD_ ONLY)	-
B48	CABLE CLAMP (MN-HD_ ONLY)	2

NOTE:

1. WHEN ORDERING PARTS, SPECIFY VALVE SIZE AND MODEL NUMBER FROM DATA PLATE, ALSO GIVE DRAWING NUMBER WITH PART NAME, ITEM NUMBER AND QUANTITY.
2. RECOMMENDED SPARE PARTS ARE ITEMS NO. B21.
3. OPTIONAL LOCKOUT PARTS B45, B46, B47 & B48 ARE FURNISHED WHEN LK(LOCKOUT) ACCESSORIES ORDERED.



DeZURIK
Sartell, MN USA 56377
www.dezurik.com

MN-HD_ HANDWHEEL ACT'R & MN-CW_ CHAINWHEEL ACT'R
AND OPTIONAL LOCKOUT FLW 14 - 24 KGC KNIFE GATE VALVES

DOCT. CODE	DRAWN	APPROVED
C1	CHECKED	DATE 06/18/02

A-47224

PDF