

DATE: 2/16/2017

INVITATION TO BID
THIS IS NOT AN ORDER

Page: 4

BID NO.: 50-00119042

JEFFERSON PARISH

PURCHASING DEPARTMENT
P.O. BOX 9
GRETN, LA. 70054-0009
504-364-2678

VENDOR:

BUYER: SFOLSE

As per LSA-RS 47:301 et seq., all governmental bodies are excluded from payment of sales taxes to any Louisiana taxing body. Quotations shall be based on F.O.B. Agency warehouse or jobsite, anywhere within the Parish as designated by the Purchasing Department.

JEFFERSON PARISH reserves the right to cancel all or any part of an order if not shipped promptly. No charges will be allowed for parking or cartage unless specified in quotation. The order must not be filled at a higher price than quoted. JEFFERSON PARISH reserves the right to cancel at any time and for any reason by issuing a THIRTY (30) day written notice to the contractor.

JEFFERSON PARISH is expecting all products to be new and all work is to be done in a workman-like manner, according to standard practices. Any deviations or alterations from the specifications must be indicated and backup documentation supplied with your quotation.

DELIVERY: FOB JEFFERSON PARISH

INDICATE DELIVERY DATE ON EQUIPMENT AND SUPPLIES

5-7 DAYS

INDICATE STARTING TIME (IN DAYS) FOR CONSTRUCTION WORK

INDICATE COMPLETION TIME (IN DAYS) FOR CONSTRUCTION WORK

In the event that addenda are issued with this bid, bidders MUST acknowledge all addenda on the bid form. Bidder must acknowledge receipt of an addendum on the bid form as indicated. Failure to acknowledge any addendum on the bid form will result in bid rejection.

Acknowledge Receipt of Addenda: NUMBER: _____
NUMBER: _____
NUMBER: _____
NUMBER: _____

LOUISIANA CONTRACTOR'S LICENSE NO.: (if applicable) _____

*** ALL BIDDERS MUST COMPLETE SECTION BELOW ***	
FIRM NAME: <u>Cinisco</u>	
SIGNATURE: (Must be signed here)	TITLE: <u>SALES</u>
PRINT OR TYPE NAME: <u>JEFF DELVIER</u>	
ADDRESS: <u>1840 L&A RD</u>	
CITY, STATE: <u>METairie, LA</u>	ZIP: <u>70001</u>
TELEPHONE: <u>504) 835 7319</u>	FAX: <u>504) 832 0820</u>
EMAIL ADDRESS: <u>JEFF@Cinisco.com</u>	

TOTAL PRICE OF ALL BID ITEMS: \$ 13476.00

DATE: 2/16/2017

INVITATION TO BID FROM JEFFERSON PARISH - continued

Page: 5

BID NO.: 50-00119042

SEALED BID

ITEM NUMBER	QUANTITY	U/M	DESCRIPTION OF ARTICLES	UNIT PRICE QUOTED	TOTALS
			SUPPLIES NEEDED FOR THE JEFFERSON PARISH PUBLIC WORKS CENTRAL WAREHOUSE		
1	1.00	EA	0010 ELBOW, 45 DEGREE, 6 INCH, CLASS 150 C-900 PVC, PUSH-ON, GASKETED SK# 00-0130930	93 ⁰⁰	93 ⁰⁰
2	36.00	EA	0020 SADDLE, DOUBLE STRAP, 6 INCH X 3/4 INCH CC TAP, O.D. RANGE 06.45 - 07.75 ALL STAINLESS STEEL, DOMESTIC, POWERSEAL MODEL 3422AS SK# 00-0160850 <i>FORD FAS202-760-CC3</i>	78.75	2835 ⁰⁰
3	36.00	EA	0030 SADDLE, SERVICE, DOUBLE STRAP, 8 IN X 2 IN CC TAP, 8 IN WIDTH, 2 IN WIDE STRAPS, ALL STAINLESS STEEL, O.D. RANGE 08.52 - 09.82, DOMESTIC, CASCADE #CS22-0982-2CC SK# 00-0161450	93 ⁰⁰	3348 ⁰⁰
4	4.00	EA	0040 SADDLE, DOUBLE STRAP, 24 INCH X 2 INCH CC TAP, 8 INCH WIDTH, 2 INCH STRAPS, ALL STAINLESS STEEL, O.D. RANGE 25.70 - 27.00, DOMESTIC, CASCADE #CS22-27.00-2 IN CC SK# 00-016305A	164 ⁰⁰	656 ⁰⁰
5	12.00	EA	0050 CLAMP, PIPE REPAIR, 4 INCH X 15 INCH LONG, SINGLE BAND, ALL STAINLESS STEEL, O.D. RANGE 04.45 - 04.73, BUNA FULL FACED GASKET, DOMESTIC, FORD #FS1-473 X 15-N SK# 00-0164940	68 ⁰⁰	816 ⁰⁰
6	12.00	EA	0060 CLAMP, PIPE REPAIR, 8 INCH X 1 INCH CC TAP X 15 INCH LONG, ALL STAINLESS, 9.40 - 9.80 RANGE, SINGLE BAND, FULL GASKET, DOMESTIC, FORD #FS1-980-15-CC4 SK# 00-0170440	151 ⁰⁰	1812 ⁰⁰
7	16.00	EA	0070 SPOOL, VALVE, 4 INCH X 24 INCH LONG FLANGED X PLAIN END, PRIME COATED, CLASS 52 OR 53 DUCTILE IRON PIPE SK# 00-0500520	80 ⁰⁰	1280 ⁰⁰
8	4.00	EA	0080 SPOOL, VALVE, 4 INCH X 48 INCH LONG FLANGED X PLAIN END, PRIME COATED,	123 ⁰⁰	492 ⁰⁰

DATE: 2/16/2017

INVITATION TO BID FROM JEFFERSON PARISH - continued

Page: 6

BID NO.: 50-00119042

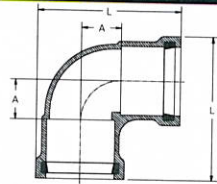
SEALED BID

ITEM NUMBER	QUANTITY	U/M	DESCRIPTION OF ARTICLES	UNIT PRICE QUOTED	TOTALS
9	16.00	EA	CLASS 52 OR 53 DUCTILE IRON PIPE SK# 00-050052B 0090 HARNESS, BELL RESTRAINT, 12 IN, FOR C-900, SERRATED RESTRAINT RING AND NON-SERRATED BACKUP RING, TEFLON COATED SIDE BOLTS, TIE BOLTS AND NUTS, DOMESTIC EBAA #1612 SK# 00-0512490 <i>UFR 1355-C - 12-RB-U</i>	<i>134⁰⁰</i>	<i>2144⁰⁰</i>

HARCO PVC C-900 GASKETED FITTINGS

DESIGN DATA

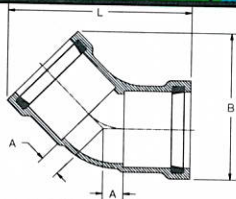
90° BEND (BxB)



(Molded fitting shown)

SIZE	PART No.	STYLE	A	L	WT. (approx.)
4	318-040	Molded	2.8	10.3	6.0
6	318-060	Molded	3.9	13.1	12.0
8	318-080	Molded	5.1	16.0	23.0
10	318-100	Fab	12.0	28.5	52.0
12	318-120	Fab	14.0	34.5	80.0

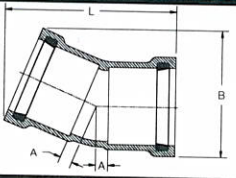
45° BEND (BxB)



(Molded fitting shown)

SIZE	PART No.	STYLE	A	B	L	WT. (approx.)
4	322-040	Molded	1.3	9.9	11.5	4.1
6	322-060	Molded	1.8	12.6	14.0	8.2
8	322-080	Molded	2.2	14.8	16.8	16.1
10	322-100	Fab	8.8	22.5	26.0	42.0
12	322-120	Fab	8.9	23.0	29.0	68.0

22½° BEND (BxB)



(Molded fitting shown)

SIZE	PART No.	STYLE	A	B	L	WT. (approx.)
4	324-040	Molded	0.8	8.0	11.0	4.0
6	324-060	Molded	1.1	10.3	13.0	8.0
8	324-080	Molded	1.3	13.3	15.0	15.0
10	324-100	Fab	6.6	16.0	26.8	36.0
12	324-120	Fab	7.8	19.3	28.5	60.0

CALL FOR OTHER SIZES, CONFIGURATIONS & GASKET MATERIALS.

NOTES:

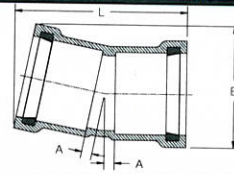
- All lay lengths & weights are approximate and are subject to change without notice.
- Fabricated fitting configurations may vary.

STYLE LEGEND:

Molded - Molded fittings are Pressure Class 150 unless otherwise noted.

Fab ----- Fabricated fittings are made from sections of C-900 pipe and are not pressure rated.

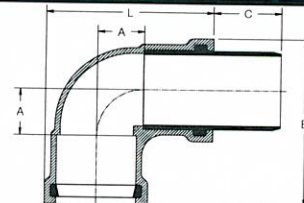
11¼° BEND (BxB)



(Molded fitting shown)

SIZE	PART No.	STYLE	A	B	L	WT. (approx.)
4	326-040	Molded	0.6	7.3	10.5	3.8
6	326-060	Molded	0.8	9.3	12.0	7.5
8	326-080	Molded	0.9	11.8	13.5	13.1
10	326-100	Fab	1.0	14.0	26.0	34.0
12	326-120	Fab	1.0	15.5	28.5	55.0

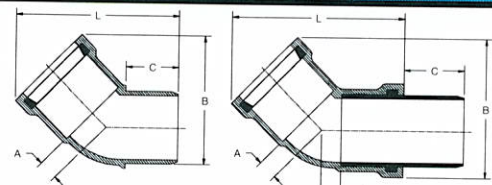
90° BEND (BxS)



(Molded fitting shown)

SIZE	PART No.	STYLE	A	B	C	L	WT. (approx.)
4	369-040	Molded	2.8	10.3	4.3	10.3	6.0
6	369-060	Molded	3.9	13.1	4.5	13.1	12.0
8	369-080	Molded	5.1	16.0	4.8	16.0	23.0
10	369-100	Fab	12.0	28.5	10.5	28.5	45.0
12	369-120	Fab	14.0	34.5	10.5	34.5	70.0

45° BEND (BxS)



STYLE A

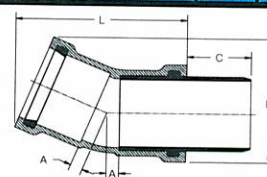
STYLE B

4" & 6" Non-Pressure

(Molded fitting shown)

SIZE	PART No.	STYLE	A	B	C	L	WT. (approx.)
4	373-040	(A) Molded*	1.3	9.9	3.6	11.5	3.5
6	373-060	(A) Molded*	1.8	12.6	3.8	14.0	7.7
8	373-080	(B) Molded	2.2	14.8	4.8	16.8	16.1
10	373-100	Fab	8.8	22.5	10.5	26.0	35.0
12	373-120	Fab	8.9	23.0	10.5	29.0	58.0

22½° BEND (BxS)



(Molded fitting shown)

SIZE	PART No.	STYLE	A	B	C	L	WT. (approx.)
4	375-040	Molded	0.8	8.0	4.3	11.0	4.0
6	375-060	Molded	1.1	10.3	4.5	13.0	8.0
8	375-080	Molded	1.3	13.3	4.8	15.0	15.0
10	375-100	Fab	6.6	15.5	10.5	26.8	35.0
12	375-120	Fab	7.8	19.5	10.5	28.5	58.0

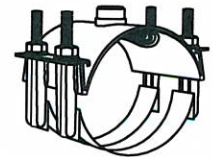


THE HARRINGTON CORPORATION

P.O. BOX 10335 • LYNCHBURG VIRGINIA 24506 • PLANT 3721 COHEN PLACE • LYNCHBURG VIRGINIA 24501
PHONE: (434) 845-7094 • FAX: (434) 845-8562 • E-mail: sales@harcofittings.com

SUBMITTAL INFORMATION

Stainless Steel Saddle- (FRS202-xxx-xxx style)



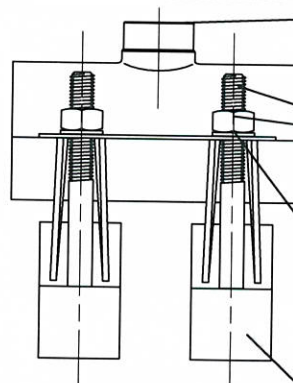
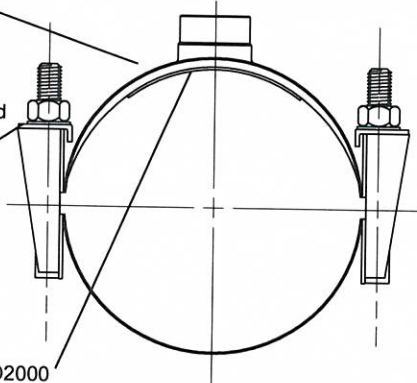
STAINLESS STEEL DOUBLE BAND REPAIR SADDLES

Body - 7-1/2" wide
ASTM A240 Type 304
stainless steel for total
corrosion control. All
welds are fully passivated
to restore stainless steel
characteristics.

Lifter Bar - ASTM A240
Type 304 stainless steel
provides a heavy surface
for nuts

Gasket - Buna-N ASTM D2000
rubber with circular grid.

Nylatron GS* is a
registered trademark
of the Polymer
Corporation.



Taps - ASTM A240
Type 304 stainless steel
available in 3/4" through 2"
FIP, AWWA or BSP threads.

Studs and Nuts -
ASTM A240 Type 304
stainless steel 5/8"
UNC threads Heavy
Hex Nuts are coated to
prevent galling.

Washers - Special
Nylatron GS* washers
are also provided for
added lubrication.

Bands - Heavy gage
ASTM A240 Type 304
stainless steel.

NOM. PIPE SIZE	O.D. RANGE	APPROX. WT. LBS.	CATALOG NUMBER	✓ SUBMITTED ITEM(S)
4"	4.75 - 5.35	7.4	FRS202-535-Tap	
6"	6.85 - 7.60	7.8	FRS202-760-Tap	
8"	9.00 - 9.79	8.3	FRS202-979-Tap	
10"	11.00 - 11.80	8.8	FRS202-1180-Tap	
	11.50 - 12.25	8.9	FRS202-1225-Tap	
12"	13.10 - 13.90	9.2	FRS202-1390-Tap	
	13.60 - 14.40	9.3	FRS202-1440-Tap	
14"	15.20 - 16.00	9.4	FRS202-1600-Tap	
16"	17.20 - 18.00	10.0	FRS202-1800-Tap	
18"	19.20 - 20.00	12.5	FRS202-2000-Tap	
20"	21.40 - 22.20	13.1	FRS202-2220-Tap	
24"	23.20 - 24.00	13.6	FRS202-2400-Tap	
	25.60 - 26.40	15.7	FRS202-2640-Tap	
30"	31.30 - 32.00	16.2	FRS202-3200-Tap	
	32.00 - 32.80	17.4	FRS202-3280-Tap	
36"	35.40 - 36.20	18.8	FRS202-3520-Tap	
	37.50 - 38.30	19.7	FRS202-3830-Tap	

OUTLET TAP CODE

CC (AWWA) THREAD		
THREAD	CODE NUMBER	✓ SUBMITTED ITEM(S)
3/4" CC	CC3	
1" CC	CC4	
1-1/4" CC	CC5	
1-1/2" CC	CC6	
2" CC	CC7	

IP THREAD		
THREAD	CODE NUMBER	✓ SUBMITTED ITEM(S)
3/4" IP	IP3	
1" IP	IP4	
1-1/4" IP	IP5	
1-1/2" IP	IP6	
2" IP	IP7	

BSP THREAD		
THREAD	CODE NUMBER	✓ SUBMITTED ITEM(S)
3/4" IP	BSP3	
1" IP	BSP4	
1-1/4" IP	BSP5	
1-1/2" IP	BSP6	
2" IP	BSP7	

To Order: Select the catalog number for the desired pipe range and complete the catalog number by adding the outlet thread tap code. Example: A double band repair saddle for 9.79 O.D. pipe with a 3/4" CC thread would be FRS202-979-CC3.

FEATURES

- 7-1/2" Wide Body, Bands and 5/8" NC threaded studs are made of ASTM A240 Type 304 stainless steel. All welds are fully passivated for corrosion resistance
- Gasket is tapered Buna-N rubber (ASTM D2000) with circular grid

The Ford Meter Box Company considers the information in this submittal form to be correct at the time of publication. Item and option availability, including specifications, are subject to change without notice. Please verify that your product information is current.



The Ford Meter Box Company, Inc.
P.O. Box 443, Wabash, Indiana U.S.A. 46992-0443
Phone: 260-563-3171 / Fax: 800-826-3487
Overseas Fax: 260-563-0167
<http://www.fordmeterbox.com>

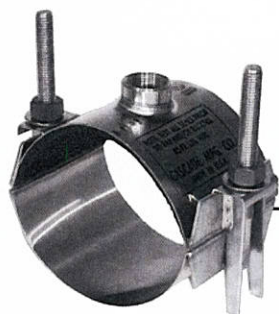
01/20/11

Submitted By:

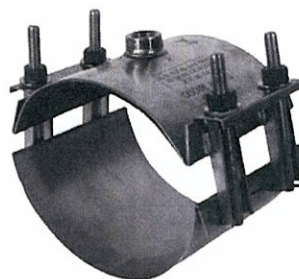


"The Standard
of Excellence in
the Industry"

TAPPING & SERVICE SADDLES



**STYLE
CS12**

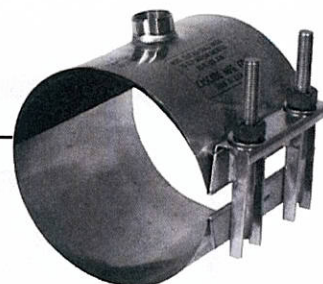


**STYLE
CS22**

**STYLE
CSC1**



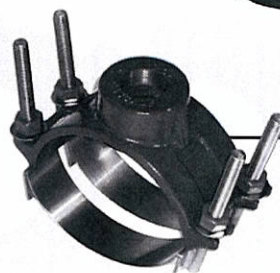
**STYLE
CSC2**



**STYLE
CNS1**



**STYLE
CNS2**



**STYLE
CDS1**



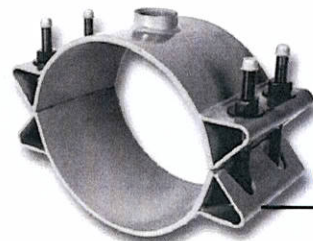
**STYLE
CDS2**



**STYLE
CFS**



**STYLE
CFT-TO**



1213 BADGER STREET • YORKVILLE, ILLINOIS 60560
(630) 553-0840 • (800) 426-4301 • FAX (630) 553-0181
www.cascademfg.com

FEATURES

- Widest Range Saddle Available
- Fits All Standard Diameters for Pipes in Nominal Sizes
- Full Hoop Support - Saddle Body Conforms to Pipe O.D.
- Certified ANSI/NSF-61

MATERIAL SPECIFICATIONS

Body T-304 Stainless Steel

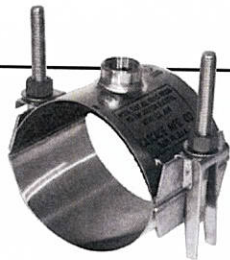
Outlet T-304 Stainless Steel

Gasket Triple O-Ring surrounded by full grid matt — SBR, Patent 6,588,767B2



Fasteners T-304 Stainless Steel 5/8-11, NC Rolled Thread; Xylan Coated Heavy Hex Nut

One saddle fits all types of pipe (AC, PVC, DI, Steel, CI)

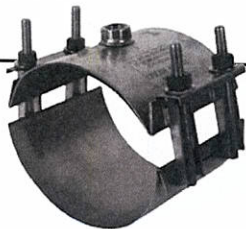


SHELL WIDTH 5"
MAXI-STRETCH
(RANGE - APPROX. 1.30")

STYLE CS12 • 5" WIDE DOUBLE BAND SADDLE

¾", 1", 1¼", 1½" AND 2" C.C. OR I.P.

Nominal Pipe Size (inches)	O.D. Range (inches)	Catalog Number	Weight Each (lbs.)
4	4.36–5.66	CS12-0566-TAP	3.5
5	5.40–6.70	CS12-0670-TAP	3.7
6	6.43–7.73	CS12-0773-TAP	4.0
8	8.52–9.82	CS12-0982-TAP	4.4
10	10.65–11.95	CS12-1195-TAP	4.8
12	12.30–13.60	CS12-1360-TAP	5.0
	13.14–14.44	CS12-1444-TAP	



SHELL WIDTH 8"
MAXI-STRETCH
(RANGE - APPROX. 1.30")

STYLE CS22 • 8" WIDE DOUBLE BAND SADDLE

¾", 1", 1¼", 1½" AND 2" C.C. OR I.P.

Nominal Pipe Size (inches)	O.D. Range (inches)	Catalog Number	Weight Each (lbs.)
4	4.36–5.66	CS22-0566-TAP	6.1
5	5.40–6.70	CS22-0670-TAP	6.6
6	6.43–7.73	CS22-0773-TAP	7.1
8	8.52–9.82	CS22-0982-TAP	8.0
10	10.65–11.95	CS22-1195-TAP	8.1
12	12.70–14.00	CS22-1400-TAP	9.1
	13.10–14.40	CS22-1440-TAP	
14	14.00–15.30	CS22-1530-TAP	9.6
	15.40–16.70	CS22-1670-TAP	
16	16.20–17.50	CS22-1750-TAP	10.6
	17.90–19.20	CS22-1920-TAP	
18	19.20–20.40	CS22-2040-TAP	11.0
20	21.50–22.80	CS22-2280-TAP	11.6
24	25.70–27.00	CS22-2700-TAP	12.6

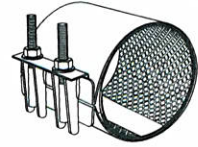
TO ORDER: Select desired catalog number and add tap size.

EXAMPLE: An 8" wide double band saddle for 6" pipe with a 2" iron pipe tap would be CS22-0773-2" IP.

NOTE: Other ranges and tap sizes available upon request.

SUBMITTAL INFORMATION

Repair Clamps - (FS1-xxx-Length style)



2" TO 4" ALL STAINLESS STEEL CIRCLE REPAIR CLAMPS

Optional Stainless Taps

ASTM A240 type 304 stainless steel tig welded to band. Available with AWWA or I.P. threads.

Band

ASTM A240 type 304 stainless steel

Lifter Bar

ASTM A240 type 304 heavy gauge stainless steel

Sidebar

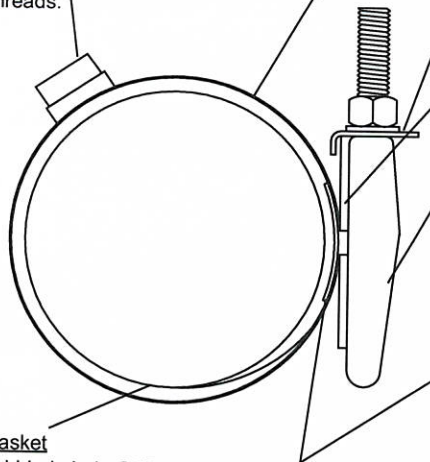
ASTM A240 type 304 heavy gauge stainless steel

Lug

ASTM A240 type 304 heavy gauge stainless steel

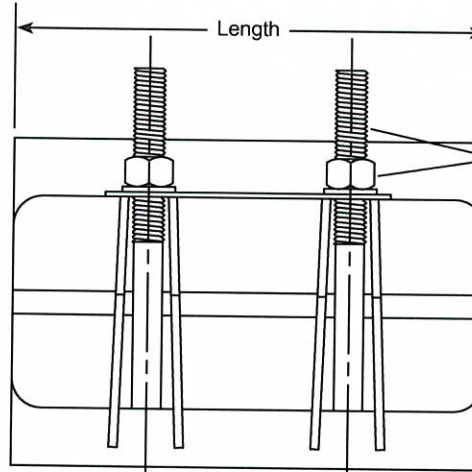
Armor

ASTM A240 type 304 heavy gauge stainless steel, mold bonded into the gasket to ensure uniform compression against the pipe



Gasket

Gridded virgin SBR compounded for water service, per ASTM D2000. Buna-N Nitrile is optional.



Bolts & Nuts
ASTM A240 type 304 stainless steel nuts and washers. Nuts are coated to prevent galling.

OUTLET THREAD TAP CODE

CC (AWWA) Thread			IP Thread		
THREAD	CODE NUMBER	MIN. CLAMP SZ.	THREAD	CODE NUMBER	MIN. CLAMP SZ.
3/4" CC	-CC3	2.63	3/4" IP	-IP3	2.63
1" CC	-CC4	2.63	1" IP	-IP4	2.63
1-1/4" CC	-CC5	3.70	1-1/4" IP	-IP5	3.70
1-1/2" CC	-CC6	4.25	1-1/2" IP	-IP6	3.70
2" CC	-CC7	4.73	2" IP	-IP7	4.25

Note: Tapped clamps are non-returnable

Note: Tapped clamps are non-returnable														
NOM. PIPE SIZE	PIPE O.D. RANGE	LENGTH AND APPROXIMATE WEIGHT (LBS.)									BOLT SIZE	BAND THICKNESS	CATALOG NUMBER FS1-XXX-LENGTH	✓ SUBMITTED ITEM(S)
		4"	6"	7.5"	10"	12.5"	15"	20"	24"	30"				
2"	2.05 - 2.25	3	4	4	5	5	8	n/a	n/a	n/a	1/2" 13 UNC	24 GA.	FS1-225-	
	2.35 - 2.63	N/A	4	4	5	5	8	n/a	n/a	n/a			FS1-263-	
2-1/4" - 2-1/2"	2.70 - 3.00	N/A	4	5	5	6	8	n/a	n/a	n/a			FS1-300-	
3"	2.97 - 3.25	N/A	4	5	5	6	9	n/a	n/a	n/a			FS1-325-	
	3.42 - 3.66												FS1-366-	
	3.46 - 3.70												FS1-370-	
	3.73 - 4.00												FS1-400-	
3" - 4"	3.96 - 4.25	N/A	5	5	6	7	9	n/a	n/a	n/a			FS1-425-	
	4.06 - 4.35												FS1-435-	
	4.37 - 4.65												FS1-465-	
	4.45 - 4.73												FS1-473-	
4"	4.74 - 5.14	N/A	5	6	7	8	10	14	16	21			5/8" 11 UNC	24 GA.
	4.95 - 5.35										FS1-535-			
	5.22 - 5.62										FS1-562-			
Number of Bolts		1	2	2	3	3	4	6	6	9				

FEATURES

- Buna-N gasket and conductivity strips are available
- Also available in two-and three-section clamps for a wider range of pipe sizes and tolerances
- Optional outlet taps are available for repair of service line pull-outs. Add tapping code to catalog number
- All welds are fully passivated to restore corrosion resistant characteristics of stainless steel
- UL classified to ANSI/NSF Standard 61

The Ford Meter Box Company considers the information in this submittal form to be correct at the time of publication. Item and option availability, including specifications, are subject to change without notice. Please verify that your product information is current.



The Ford Meter Box Company, Inc.

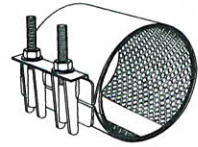
P.O. Box 443, Wabash, Indiana U.S.A. 46992-0443
Phone: 260-563-3171 / Fax: 800-826-3487
Overseas Fax: 260-563-0167
www.fordmeterbox.com

05/12/14

Submitted By:

SUBMITTAL INFORMATION

Repair Clamps - (FS1-xxx-Length style)



6" AND 8" ALL STAINLESS STEEL CIRCLE REPAIR CLAMPS

Optional Stainless Taps

ASTM A240 type 304 stainless steel tig welded to band. Available with AWWA or I.P. threads.

Band

ASTM A240 type 304 stainless steel

Lifter Bar

ASTM A240 type 304 heavy gauge stainless steel

Sidebar

ASTM A240 type 304 heavy gauge stainless steel

Lug

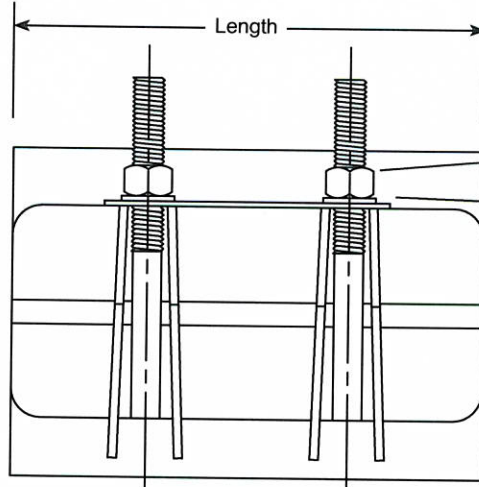
ASTM A240 type 304 heavy gauge stainless steel

Gasket

Gridded virgin SBR compounded for water service, per ASTM D2000. Buna-N Nitrile is optional.

Armor

ASTM A240 type 304 heavy gauge stainless steel, mold bonded into the gasket to ensure uniform compression against the pipe



Bolts & Nuts
ASTM A240 type 304 stainless steel nuts and washers. Nuts are coated to prevent galling.

OUTLET THREAD TAP CODE

CC (AWWA) THREAD		IP THREAD	
THREAD	CODE NUMBER	THREAD	CODE NO.
3/4" CC	-CC3	3/4" IP	-IP3
1" CC	-CC4	1" IP	-IP4
1-1/4" CC	-CC5	1-1/4" IP	-IP5
1-1/2" CC	-CC6	1-1/2" IP	-IP6
2" CC	-CC7	2" IP	-IP7

Note: Tapped clamps are non-returnable

NOM. PIPE SIZE	PIPE O.D. RANGE	LENGTH AND APPROXIMATE WEIGHT (LBS.)								BOLT SIZE	BAND THICKNESS	CATALOG NUMBER FS1-xxx-LENGTH	✓ SUBMITTED ITEM(S)
		7.5"	10"	12.5"	15"	20"	24"	30"	36"				
6"	5.95 - 6.35	7	9	10	14	17	21	27	34	5/8" 11 UNC	20 GA.	FS1-635-	
	6.56 - 6.96											FS1-696-	
	6.84 - 7.24											FS1-724-	
	7.05 - 7.45											FS1-745-	
	7.25 - 7.65											FS1-765-	
	7.45 - 7.85											FS1-785-	
8"	7.95 - 8.35	8	10	11	15	19	24	30	39			FS1-835-	
	8.54 - 8.94											FS1-894-	
	8.99 - 9.39											FS1-939-	
	9.27 - 9.67											FS1-967-	
Number of Bolts		2	3	3	4	6	7	9	10				

FEATURES

- Buna-N gasket and conductivity strips are available
- Also available in two-and three-section clamps for a wider range of pipe sizes and tolerances
- Optional outlet taps are available for repair of service line pull-outs. Add tapping code to catalog number
- All welds are fully passivated to restore corrosion resistant characteristics of stainless steel
- UL classified to ANSI/NSF Standard 61

The Ford Meter Box Company considers the information in this submittal form to be correct at the time of publication. Item and option availability, including specifications, are subject to change without notice. Please verify that your product information is current.



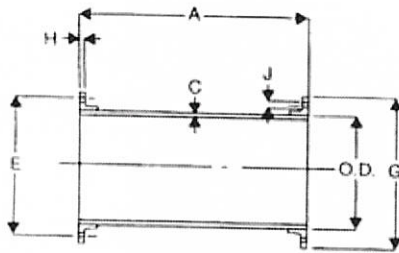
The Ford Meter Box Company, Inc.

P.O. Box 443, Wabash, Indiana U.S.A. 46992-0443
Phone: 260-563-3171 / Fax: 800-826-3487
Overseas Fax: 260-563-0167
www.fordmeterbox.com

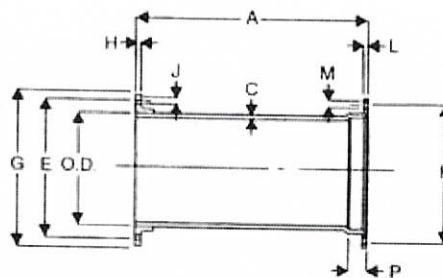
05/12/14

Submitted By:

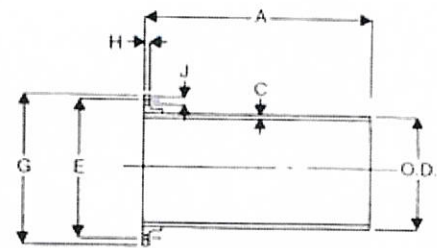
FABRICATED FLANGE PIPES



FLG. x FLG.



FLG. x M.J.

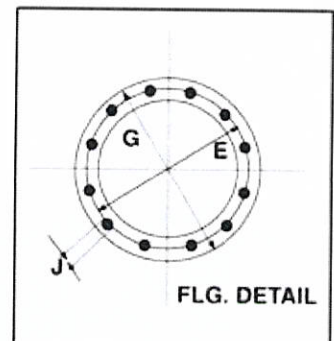


FLG. x P.E.

SIZE	A	B	C	O.D.		E	G	H		NO. OF FLG'D BOLT HOLES	J	K		L		NO. OF M.J. BOLT HOLES	M		P
				MIN.	MAX.			MIN.	MAX.			MIN.	MAX.	MIN.	MAX.		MIN.	MAX.	
3	•	•	0.31	3.90	4.02	6.00	7.50	0.63	0.87	4	0.75	6.13	6.25	0.88	0.94	4	0.75	0.81	2.50
4	A	A	0.32	4.74	4.86	7.50	9.00	0.82	1.06	8	0.75	7.44	7.56	0.94	1.00	4	0.875	0.935	2.50
6	S	S	0.34	6.84	6.96	9.50	11.00	0.88	1.12	8	0.875	9.44	9.56	1.00	1.06	6	0.875	0.935	2.50
8	•	•	0.36	8.99	9.11	11.75	13.50	1.00	1.24	8	0.875	11.69	11.81	1.04	1.12	6	0.875	0.935	2.50
10	•	•	0.38	11.04	11.16	14.25	16.00	1.07	1.31	12	1.00	13.94	14.06	1.11	1.19	8	0.875	0.935	2.50
12	R	R	0.40	13.14	13.26	17.00	19.00	1.13	1.37	12	1.00	16.19	16.31	1.17	1.25	8	0.875	0.935	2.50
14	E	E	0.42	15.22	15.35	18.75	21.00	1.19	1.57	12	1.125	18.69	18.81	1.19	1.31	10	0.875	0.935	3.50
16	Q	Q	0.43	17.32	17.45	21.25	23.50	1.25	1.63	16	1.125	20.94	21.06	1.26	1.38	12	0.875	0.935	3.50
18	U	U	0.44	19.42	19.55	22.75	25.00	1.37	1.75	16	1.25	23.19	23.31	1.32	1.44	12	0.875	0.935	3.50
20	I	I	0.45	21.52	21.65	25.00	27.50	1.50	1.88	20	1.25	25.44	25.56	1.38	1.50	14	0.875	0.935	3.50
24	R	R	0.47	25.72	25.85	29.50	32.00	1.69	2.07	20	1.375	29.94	30.06	1.50	1.62	16	0.875	0.935	3.50
30	E	E	0.51	31.94	32.08	36.00	38.75	1.87	2.37	28	1.375	36.82	36.94	1.69	1.81	20	1.125	1.185	4.00
36	D	D	0.58	38.24	38.38	42.75	46.00	2.13	2.63	32	1.625	43.69	43.81	1.88	2.00	24	1.125	1.185	4.00
42	•	•	0.65	44.44	44.58	49.50	53.00	2.37	2.87	36	1.625	50.56	50.68	1.88	2.00	28	1.375	1.435	4.00
48	•	•	0.72	50.74	50.88	56.00	59.50	2.50	3.00	44	1.625	57.44	57.56	1.88	2.00	32	1.375	1.435	4.00
54	•	•	0.81	57.40	57.64	62.75	62.75	2.75	3.25	44	1.875	N/A	N/A	N/A	N/A	N/A	N/A	N/A	N/A
60	•	•	0.83	61.51	61.65	69.25	73.00	2.87	3.37	52	2.00	N/A	N/A	N/A	N/A	N/A	N/A	N/A	N/A
64	•	•	0.87	65.57	65.71	76.00	80.00	3.13	3.63	52	2.00	N/A	N/A	N/A	N/A	N/A	N/A	N/A	N/A

1. Tolerance on length of FLG. x FLG. and FLG. x M.J. pipe shall be $\pm 0.125"$.
2. Tolerance on length of FLG. x P.E. shall be $\pm 0.25"$.
3. Above material shall meet all applicable sections of ANSI A21.10, A21.15, A21.51, B2.1, B16.1/ AWWA, C110, C115, C150, C151, and all revisions thereto.
4. Flanged pipe shall be ductile iron pipe with ductile iron flanges threaded on.
5. Flange pipe is provided with cement lining per AWWA C204/A21.4. If other linings are required, contact your local sales representative.
6. The mechanical joint bell for 30" & 36" sizes of ductile iron pipe have thicknesses different from those shown in ANSI A21.11, which are based on gray iron pipe. These reduced thicknesses provide a lighter-weight bell which is compatible with the wall thickness of ductile iron pipe.
7. Submitted material only. Consult engineer for application.
8. 250 lb. faced and drilled flanges available upon request.

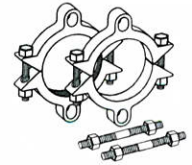
PRIME COATING



U.S. PIPE FABRICATION, LLC

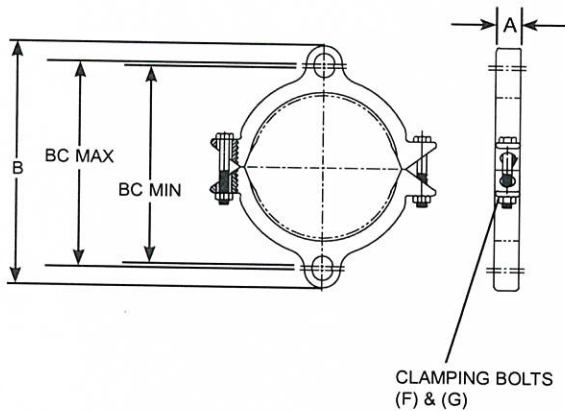
SUBMITTAL INFORMATION

Uni-Flange Restraint (UFR1355-C-x-U style)

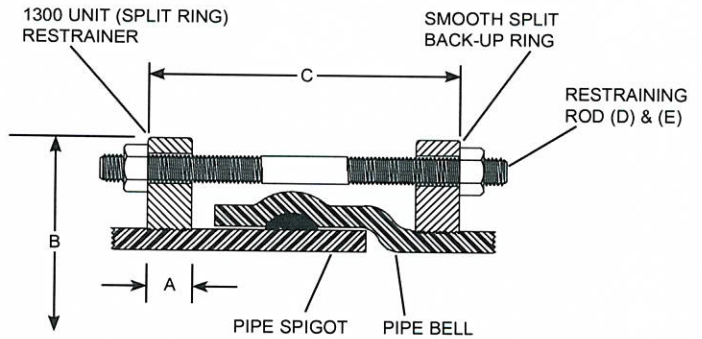


SERIES 1355-C RESTRAINT DEVICE FOR C900 PVC PIPE BELL JOINTS,
HAVING DUCTILE IRON PIPE O.D. CAST SIZES 4" - 12"

1300 SPLIT RESTRAINER



1355 ASSEMBLY



NOM PIPE SIZE	PVC PIPE WITH DI PIPE OD STYLE 1355-C		A	B APPROX	C MAX	RESTRAINING RODS		CLAMPING BOLTS		BC MAX	BC MIN	✓ SUBMITTED ITEMS
	OD	CATALOG No.				No. D	SIZE E	No. F	SIZE G			
4"	4.80	UFR1355-C-4-U	1-1/8"	9-1/8"	12"	2	3/4" x 17"	4	5/8" x 3-1/2"	7.50"	7.14"	
6"	6.90	UFR1355-C-6-U	1-1/8"	11-1/8"	13"	2	3/4" x 17"	4	5/8" x 3-1/2"	9.50"	9.14"	
8"	9.05	UFR1355-C-8-U	1-1/4"	14-5/8"	15"	2	3/4" x 17"	4	3/4" x 4"	12.98"	11.36"	
10"	11.10	UFR1355-C-10-U	1-3/8"	16-5/8"	16"	4	3/4" x 24"	4	7/8" x 5"	15.00"	13.50"	
12"	13.20	UFR1355-C-12-U	1-3/8"	19-1/4"	18"	4	3/4" x 24"	4	7/8" x 5"	17.62"	15.62"	

FEATURES

- 4" - 12" Sizes: Cast Ductile Iron per ASTM A536 Grade 65-45-12.
- 360° contact and support of the pipe wall.
- Restraining rods are high strength, low alloy steel per ANSI / AWWA C111 / A21.11.
- Rated at full rated pressure of any class of PVC Pipe, minimum 2:1 safety factor.
- Castings are manufactured in the United States of America.

TEFLON BOLTS/
NUTS/TIE BOLTS

The Ford Meter Box Company considers the information in this submittal form to be correct at the time of publication. Item and option availability, including specifications, are subject to change without notice. Please verify that your product information is current.



The Ford Meter Box Company, Inc.
P.O. Box 443, Wabash, Indiana U.S.A. 46992-0443
Phone: 260-563-3171 / Fax: 800-826-3487
Overseas Fax: 260-563-0167
<http://www.fordmeterbox.com>



07/25/13

Submitted By: