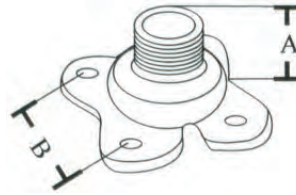


Malleable Crows Foot Fixture Hanger

- Crows Foot Fixture Hanger
- Malleable Iron

DIMENSIONS = INCHES

CAT. NO.	THREAD SIZE	DIMENSIONS		INNER BOX	OUTER BOX
		A	B		
18096	1/4"-20	1.00	1.10	25	250

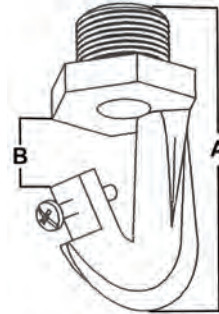


Fixture Hook

- High bay fixture hooks are used to hang light fixtures from multiple structural members
- Pre-installed set screw helps prevent vibratory loosening in high-abuse areas
- 3/4" NPT Threads
- Malleable Iron

DIMENSIONS = INCHES

CAT. NO.	THREAD SIZE	DIMENSIONS		BOX QTY
		A	B	
18095	1/2"	3.40	.95	50
18092	3/4"	3.40	.95	50



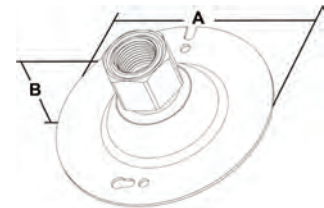
Swivel Pendant - Malleable Round Fixture Hanger



- Swivel pendant mount allows high bays and other hanging fixtures to be mounted on a sloped ceiling
- Pivot ball that allows the installed fixture and pipe stem to swing 20° from vertical when subjected to occasional bumps or vibration
- Fits 3/4" conduit
- Includes reducer bushing to 1/2" with set screw
- Fits standard 4" Octagon electrical boxes
- Rated for 50lbs Maximum

DIMENSIONS = INCHES

CAT. NO.	DIMENSIONS		BOX QTY
	A	B	
18094	4.21	2.02	25



Swivel Pendant - Malleable Square Fixture Hanger



- Used to support light fixtures, security cameras, exit signs, and a variety of electrical and electronic devices installed in industrial settings
- Pivot ball that allows the installed fixture and pipe stem to swing 20° from vertical when subjected to occasional bumps or vibration
- Fits 3/4" conduit
- Includes reducer bushing to 1/2" with set screw
- Fits standard 4" Square electrical boxes
- Rated for 50lbs Maximum

DIMENSIONS = INCHES

CAT. NO.	DIMENSIONS		BOX QTY
	A	B	
18093	4.21	2.02	25

