

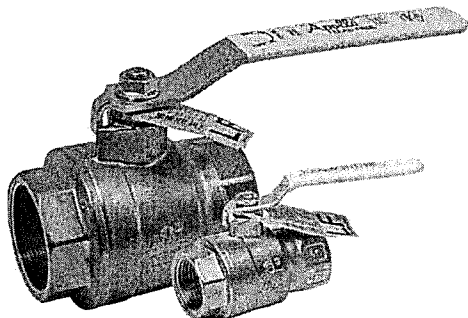


SUBMITTAL  
SHEET

# 77FLF-100 Series

Full Port Threaded End Brass Ball Valve

**LEAD FREE**



Job Name:	
Job Location:	
Engineer:	
Contractor:	
Tag:	
PO#:	
Rep:	
Wholesale Dist.:	

## DESCRIPTION

The Apollo 77FLF-100 Series is a lead free, full port forged brass ball valve suitable for a wide range of plumbing and heating applications, including potable water. These NPT threaded, 2-piece valves combine reliable operation with maximum economy. Valves include most pertinent agency approvals. Proudly Made in the USA.

## FEATURES

- Lead Free\* Materials and Approvals
- Heavy Pattern Forged Design
- Full-Port Flow
- Superior RPTFE Seats and Packing
- Adjustable Stem Packing
- Blowout-Proof Stem
- 2-1/2" - 4" Sizes Now Feature 316SS Ball and Stem (Standard)
- Dezincification Resistant Materials
- 100% Factory Tested
- Silicone Free Assembly
- **Made in USA, ARRA Compliant**

## PERFORMANCE RATING

- Rating: 600 CWP (1/4" - 2")
- Rating: 400 CWP (2-1/2" - 4")
- Steam Rating: 150 psi SWP
- Temperature Range: 0°F - 400°F
- Vacuum Service to 29 in. Hg

## OPTIONS

- (-01) Standard Lever
- (-04) 2-1/4" Stem Extension
- (-07) Tee Handle
- (-10) Stainless Steel Lever & Nut
- (-11) Thermo-Seal™ Insulating Tee Handle
- (-27) Locking Handle SS
- (77F140 Series) - SS Ball & Stem

1/4" - 2-1/2"  
1/4" - 2"  
1/4" - 2"  
1/4" - 2"  
1/4" - 2-1/2"

## STANDARD MATERIALS LIST

<b>BODY</b>	Lead Free Brass, C27451
<b>SEAT</b>	RPTFE
<b>BALL</b>	Lead Free Brass, C27451, Chrome Plated 316 SS (2-1/2" - 4")
<b>STEM PACKING</b>	RPTFE
<b>NUT</b>	Corrosion Resistant Plated Steel
<b>STEM</b>	Lead Free Brass, C27451 316 SS (2-1/2" - 4")
<b>RETAINER</b>	Lead Free Brass, C27451
<b>HANDLE</b>	Plated Steel / Insulated Polyvinyl
<b>GLAND</b>	Brass, ASTM B16, C36000

## APPROVALS

- MSS SP-110
- IAPMO/ANSI Z1157
- NSF/ANSI/CAN 61 - Water Quality
- NSF/ANSI 372 - Lead Free

## CSA LISTED

- CGA CR91-002 (5 PSI)
- ANSI Z21.15/CSA 9.1 (1/2 PSI)
- ASME B16.44 (5 PSI)
- ASME B16.33 (125 PSI) (1/2" - 2")

## UL LISTED

- UL 125 - Flow Control Valves for LP-Gas, Guide YSDT to 250 psi max
- UL 258 - Fire Protection Trim & Drain, Guide VQGU to 175psi max (1/4" - 2")
- UL 842 - Valves for Flammable Fluids, Guides YRBX, YRPV, and MHKZ to 250 psi max. (1/4" - 4" NPT only)
- UL 1477 - Compressed Gas Shutoff Valves, Guide YQNZ to 250 psi max (1/4" - 4" NPT only)

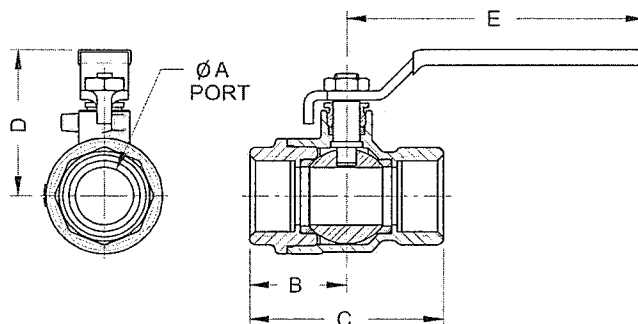
\*Gas approvals apply to NPT models only

## FM LISTED

- FM 1140 (-175 PSI) (1/4" - 2")

## DIMENSIONS

PART NUMBER	SIZE (IN.)	DIMENSIONS (IN.)					WT. (LB.)
		A	B	C	D	E	
77FLF-101-01	1/4"	0.38	0.81	1.62	1.61	2.85	0.3
77FLF-102-01	3/8"	0.38	0.95	1.70	1.61	2.85	0.3
77FLF-103-01	1/2"	0.50	1.14	2.25	1.66	2.85	0.5
77FLF-104-01	3/4"	0.75	1.29	2.57	1.91	3.86	0.8
77FLF-105-01	1"	1.00	1.60	3.20	2.11	3.86	1.3
77FLF-106-01	1-1/4"	1.25	1.73	3.46	2.44	4.75	2.1
77FLF-107-01	1-1/2"	1.50	2.00	4.00	2.91	5.42	3.2
77FLF-108-01	2"	2.00	2.37	4.74	3.69	7.77	5.6
77FLF-149-01	2-1/2"	2.50	2.99	5.98	4.14	7.77	12.8
77FLF-140-01	3"	3.00	3.52	7.05	5.03	9.92	19.7
77FLF-14A-01	4"	4.00	3.83	7.65	5.70	14.78	25.5



\*LEAD FREE: The wetted surfaces of this product shall contain no more than 0.25% lead by weighted average. Complies with Federal Public Law 111-380, ANSI 3rd party approved and listed.

(704) 841-6000  
apollovalves.com

SS1348 © 01/21 Page 1 of 1

This specification is provided for reference only. Apollo reserves the right to change any portion of this specification without notice and without incurring obligation to make such changes to Apollo products previously or subsequently sold. Most current information available at apollovalves.com.

**A** integrated  
aallberts piping systems