



CENTRALBIDDING
FROM CENTRAL AUCTION HOUSE

5000120417 ONE TIME PURCHASE OF CEMENT MORTAR MIX
Jefferson Parish Government

Project documents obtained from www.CentralBidding.com

21-Jul-2017 01:19:34 PM

DATE: 7/20/2017

INVITATION TO BID
THIS IS NOT AN ORDER

Page: 1

BID NO.: 50-00120417

JEFFERSON PARISH
PURCHASING DEPARTMENT
P.O. BOX 9
GRETNA, LA. 70054-0009
504-364-2678

VENDOR: 27118 BLANK BID COPY VENDOR

BUYER: DMEVANS@jeffparish.net

Bids will be received until 11:00 AM, 7/26/2017 via online at www.jeffparishbids.net or by hand delivery, USPS mail or other courier service to Purchasing Department, 200 Derbigny Street (General Government Building), Suite 4400, Gretna, LA 70053. For convenience, bidders may also submit bids in the East Bank Purchasing Department, Suite 404, Jefferson Parish Joseph S. Yenni Building, 1221 Elmwood Park Blvd., Jefferson LA 70123. However, if submitting bids on the day of bid opening, bidders must submit at the West Bank location only.

All bids submitted are subject to these instructions and general conditions and any special conditions and specifications contained herein, all of which are made part of this bid proposal reference. By submitting a bid, vendor agrees to comply with all provisions of Louisiana Law, as well be in compliance with the Jefferson Parish Code of Ordinances, Louisiana Code of Ethics, applicable Jefferson Parish ethical standards and Jefferson Parish Resolution No. 113646 and/or Resolution No. 113647. A copy of these resolutions may be obtained from the Office of the Parish Clerk, Suite 6700, Jefferson Parish General Government Building, 200 Derbigny Street, Gretna, LA 70053. You may also obtain a copy by visiting the Purchasing Department webpage at purchasing.jeffparish.net and clicking on On-line forms.

All vendors submitting bids should register as a Jefferson Parish vendor if not already yet registered. Registration forms may be downloaded from <http://purchasing.jeffparish.net> and by clicking on Vendor Information. Current W-9 forms with respective Tax Identification numbers and vendor applications may be submitted at any time; however, if your company is not registered and/or a current W-9 form is not on file, vendor registration is mandatory. Further, a current W-9 form and respective Tax Identification number must be supplied upon contract execution, should you be awarded a contract and/or issued purchase order. Failure to do so may result in delay of payment.

As per LSA-RS 47:301 et seq., all governmental bodies are excluded from payment of sales taxes to any Louisiana taxing body. Quotations shall be based on F.O.B. Delivered, anywhere within the Parish as designated by the Purchasing Department. JEFFERSON PARISH WILL ACCEPT ONE BID ONLY FROM EACH VENDOR. Items bid must meet specifications. JEFFERSON PARISH will accept one price for each item unless otherwise indicated. Two or more prices for one item will result in bid rejection. Bidders are required to complete, sign and return the bid form and/or complete and return the associated line item pricing forms as indicated. The price quoted for work shall be stated in figures. In the event there is a difference in unit prices and totals, the unit prices shall prevail.

JEFFERSON PARISH reserves the right to award contracts or place orders on a lump sum or individual item basis, or such combination, as shall in its judgment be in the best interest of JEFFERSON PARISH. Every contract or order shall be awarded to the LOWEST RESPONSIVE and RESPONSIBLE BIDDER, taking into consideration the CONFORMITY WITH THE SPECIFICATIONS and the DELIVERY AND/OR COMPLETION DATE

PROTESTS: Only those vendors that submitted a bid in response to this solicitation may submit a protest in writing to the Director of the Purchasing within 48 hours of bid opening. The Purchasing Director will review it in connection with the Parish Attorney's Office as appropriate and a written response will be provided as soon as possible.

JEFFERSON PARISH reserves the right to cancel all or any part of an order if not shipped promptly. No charges will be allowed for parking or cartage unless specified in the quotation. The order must not be filled at a higher price than quoted. JEFFERSON PARISH reserves the right to cancel at any time and for any reason by issuing a THIRTY (30) day written notice to the contractor.

JEFFERSON PARISH requires all products to be new (current) and all work must be performed according to standard practices for the project. Unless otherwise specified, no aftermarket parts will be accepted. Unless otherwise specified, all workmanship and materials must have at least one (1) year guaranty, in writing, from the date of delivery and/or acceptance of the project. Any deviations or alteration from the specifications must be indicated on the bid form for each item and upon request, product data for same must be submitted by the time specified by the Purchasing Department.

If this bid requires a pre-bid conference (see Additional Requirements section), bidders are advised that such conference will be held to allow bidders the opportunity to identify any discrepancies in the bid specifications and seek further clarification regarding instructions. The Purchasing Department will issue a written response to bidders' questions in the form of an Addendum.

All formal Addenda require written acknowledgment on the bid form by the bidder. Failure to acknowledge an Addendum on the bid form shall cause the bid to be rejected; JEFFERSON PARISH reserves the right to award bid to next lowest responsive and responsible bidder in this event.

USE OF BRAND NAMES AND STOCK NUMBERS: Where brand names and stock numbers are specified, it is for the purpose of establishing certain minimum standards of quality. Bids may be submitted for products of equal quality, provided brand names and stock numbers are specified. Complete product data may be required prior to award.

Quantities listed are for bidding purposes only. Actual requirements may be more or less than quantities listed.

Bidders are not to exclude from participation in, deny the benefits of, or subject to discrimination under any program or activity, any person in the United States on the grounds of race, color, national origin, or sex; nor discriminate on the basis of age under the Age Discrimination Act of 1975, or with respect to an otherwise qualified handicapped individual as provided in Section 504 of the Rehabilitation Act of 1973, or on the basis of religion, except that any exemption from such prohibition against discrimination on the basis of religion as provided in the Civil Rights Act of 1964, or Title VI and VII of the Act of April 11, 1968, shall also apply. This assurance includes compliance with the administrative requirements of the Revenue Sharing final handicapped discrimination provisions contained in Section 51.55 (c), (d), (e), and (k)(5) of the Regulations. New construction or renovation projects must comply with Section 504 of the 1973 Rehabilitation Act, as amended, in accordance with the American National Standard Institute's specifications (ANSI A117.1-1961).

Jefferson Parish and its partners as the recipients of federal funds are fully committed to awarding a contract(s) to firm(s) that will provide high quality services and that are dedicated to diversity and to containing costs. Thus, Jefferson Parish strongly encourages the involvement of minority and/or woman-owned business enterprises (DBE's, including MBE's, WBE's and SBE's) to stimulate participation in procurement and assistance programs.

INSTRUCTIONS FOR BIDDERS AND GENERAL CONDITIONS**IN ACCORDANCE WITH STATE REGULATIONS JEFFERSON PARISH OFFERS ELECTRONIC PROCUREMENT TO ALL VENDORS**

This electronic procurement system allows vendors the convenience of reviewing and submitting bids online.

This is a secure site and authorized personnel have limited read access only. Bidders are encouraged to submit electronically using this free service; while the website accepts various file types, one single PDF file containing all appropriate and required bid documents is preferred. Bidders submitting uploaded images of bid responses are solely responsible for clarity. If uploaded images/documents are not legible, then bidder's submission will be rejected. Please note all requirements contained in this bid package for electronic bid submission.

Please visit our E-Procurement Page at www.jeffparishbids.net to register and view Jefferson Parish solicitations. For more information, please visit the Purchasing Department page at <http://purchasing.jeffparish.net>.

ADDITIONAL REQUIREMENTS FOR THIS BID

PLEASE MATCH THE NUMBERS PRINTED IN THIS BOX WITH THE CORRESPONDING INSTRUCTIONS BELOW.

13

1. All bidders must attend the MANDATORY pre-bid conference and will be required to sign in and out as evidence of attendance. In accordance with LSA R.S. 38:2212(I), all prospective bidders shall be present at the beginning of the MANDATORY pre-bid conference and shall remain in attendance for the duration of the conference. Any prospective bidder who fails to attend the conference or remain for the duration shall be prohibited from submitting a bid for the project.
2. Attendance to this pre-bid conference is optional. However, failure to attend the pre-bid conference shall not relieve the bidder of responsibility for information discussed at the conference. Furthermore, failure to attend the pre-bid conference and inspection does not relieve the successful bidder from the necessity of furnishing materials or performing any work that may be required to complete the work in accordance with the specification with no additional cost to the owner.
3. Contractor must hold current applicable JEFFERSON PARISH licenses with the Department of Inspection and Code Enforcement. Contractor shall obtain any and all permits required by the JEFFERSON PARISH Department of Inspection and Code Enforcement. The contractor shall be responsible for the payment of these permits. All permits must be obtained prior to the start of the project. Contractor must also hold any and all applicable Federal and State licenses. Contractor shall be responsible for the payment of these permits and shall obtain them prior to the start of the project.
4. A LA State Contractor's License will be required in accordance with LSA R.S. 37-2150 et. seq. and such license number will be shown on the outside of the bid envelope. Failure to comply will cause the bid to be rejected. Additionally if submitting the bid electronically, then the license number must be entered in the appropriate field in the Electronic Procurement system. Failure to comply will cause the bid to be rejected.
5. It is the bidder's responsibility to visit the job site and evaluate the job before submitting a bid.
6. Job site must be clean and free of all litter and debris daily and upon completion of the contract. Passageways must be kept clean and free of material, equipment, and debris at all times. Flammable material must be removed from the job site daily because storage will not be permitted on the premises. Precautions must be exercised at all times to safeguard the welfare of JEFFERSON PARISH and the general public.

INSTRUCTIONS FOR BIDDERS AND GENERAL CONDITIONS

7. **PUBLIC WORKS BIDS:** All awards for public works in excess of \$5,000.00 will be reduced to a formal contract which shall be recorded at the contractor's expense with the Clerk of Court and Ex-Officio Recorder of Mortgages for the Parish of Jefferson. A price list of recordation costs may be obtained from the Clerk of Court and Ex-Officio Recorder of Mortgages for the Parish of Jefferson. All awards in excess of \$25,000.00 will require both a performance and a payment bond. Unless otherwise stated in the bid specifications, the performance bond requirements shall be 100% of the contract price. Unless otherwise state in the bid specifications, the payment bond requirements shall be 100% of the contract price. Both bonds shall be supplied at the signing of the contract.
8. **NON-PUBLIC WORKS BIDS:** A performance bond will be required for this bid. The amount of the bond will be 100% of the contract price unless otherwise indicated in the specifications. The performance bond shall be supplied at the signing of the contract.
9. **NON-PUBLIC WORKS BIDS:** A payment bond will be required for this bid. The amount of the bond will be 100% of the contract price unless otherwise indicated in the specifications. The payment bond shall be supplied at the signing of the contract.
10. Unless otherwise stated in the bid specifications, the successful bidder will be required to procure standard insurance policies evidencing Parish-mandated insurance requirements as indicated on the attached "insurance requirements" sheet. All bidders must comply with the instructions in this sheet. Failure to comply will cause bid to be rejected.
11. A bid bond will be required with bid submission in the amount of 5% of the total bid, unless otherwise stated in the bid specifications. Acceptable forms shall be limited to cashier's check, certified check, or surety bid bond. All sureties must be in original format (no copies). If submitting a bid online, vendors must submit an electronic bid bond through the respective online clearinghouse bond management system(s) as indicated in the electronic bid solicitation on Central Auction House. No scanned paper copies of any bid bond will be accepted as part of the electronic bid submission.
12. This is a requirements contract to be provided on an as needed basis. JEFFERSON PARISH makes no representations on warranties with regard to minimum guaranteed quantities unless otherwise stated in the bid specifications.
13. Freight charges should be included in total cost when quoting. If not quoted FOB DELIVERED, freight must be quoted as a separate item. Bid may be rejected if not quoted FOB DELIVERED or if freight charges are not indicated on bid form.
14. **PUBLIC WORKS BIDS - Completed, Signed and Properly Notarized Affidavits Required;** This applies to all solicitations for construction, alteration or demolition of public buildings or projects, in conformity with the provisions contained in LSA-RS 38:2212.9, LSA-RS 38:2212.10, LSA-RS 38:2224, and Sec 2-923.1 of the Jefferson Parish Code of Ordinances. For bidding purposes, all bidders must submit with bid submission COMPLETED, SIGNED and PROPERLY NOTARIZED Affidavits, including: Non-Conviction Affidavit, Non-Collusion Affidavit, Campaign Contribution Affidavit, Debt Disclosures Affidavit and E-Verify Affidavit. For the convenience of vendors, all affidavits have been combined into one form entitled PUBLIC WORKS BID AFFIDAVIT. This affidavit must be submitted in its original format, and without material alteration, in order to be compliant and for the bid to be considered responsive. A scanned copy of the completed, signed and properly notarized affidavit may be submitted with the bid, however, the successful bidder must submit the original affidavit in its original format and without material alteration upon contract execution. Failure to comply will result in the bid submission being rejected as non-responsive. The Parish reserves the right to award bid to the next lowest responsive and responsible bidder in this event.
15. **NON PUBLIC WORK BIDS - Completed, Signed and Properly Notarized Affidavits Required** in conformity with the provisions contained in LSA – RS 38:2224 and Sec 2-923.1 of the Jefferson Parish Code of Ordinances. For bidding purposes, all bidders must submit with bid submission COMPLETED, SIGNED and PROPERLY NOTARIZED Affidavits, including: Non-Collusion Affidavit, Debt Disclosures Affidavit and Campaign Contribution Affidavit. For the convenience of vendors, all affidavits have been combined into one form entitled NON PUBLIC WORKS BID AFFIDAVIT. This affidavit must be submitted in its original format, and without material alteration, in order to be compliant and for the bid to be considered responsive. A scanned copy of the completed, signed and properly notarized affidavit may be submitted with the bid, however, the successful bidder must submit the original affidavit in its original format and without material alteration upon contract execution. Failure to comply will result in the bid submission being rejected as non-responsive. The Parish reserves the right to award bid to the next lowest responsive and responsible bidder in this event.
16. The ensuing contract for this bid solicitation may be eligible for FEMA reimbursement and/or Federal funding/reimbursement. As such, the referenced appendix will be applicable accordingly and shall be considered a part of the bid documents. All applicable certifications must be duly completed, signed and submitted with bid submission. Failure to submit applicable certifications with bid submission will result in bid rejection.

It shall be the duty of every parish officer, employee, department, agency, special district, board, and commission: and the duty of every contractor, subcontractor, and licensee of the parish, and the duty of every applicant for certification of eligibility for a parish contract or program, to cooperate with the Inspector General in any investigation, audit, inspection, performance review, or hearing pursuant to Jefferson Parish Code of Ordinances Section 2-155.10(19). By submitting a bid, vendor acknowledges this and will abide by all provisions of the referenced Jefferson Parish Code of Ordinances.

DATE: 7/20/2017

INVITATION TO BID
THIS IS NOT AN ORDER

Page: 4

BID NO.: 50-00120417

JEFFERSON PARISH

PURCHASING DEPARTMENT
P.O. BOX 9
GRETNA, LA. 70054-0009
504-364-2678

VENDOR: 27118 BLANK BID COPY VENDOR Coburn's Supply

BUYER: DMEVANS

As per LSA-RS 47:301 et seq., all governmental bodies are excluded from payment of sales taxes to any Louisiana taxing body. Quotations shall be based on F.O.B. Agency warehouse or jobsite, anywhere within the Parish as designated by the Purchasing Department.

JEFFERSON PARISH reserves the right to cancel all or any part of an order if not shipped promptly. No charges will be allowed for parking or cartage unless specified in quotation. The order must not be filled at a higher price than quoted. JEFFERSON PARISH reserves the right to cancel at any time and for any reason by issuing a THIRTY (30) day written notice to the contractor.

JEFFERSON PARISH is expecting all products to be new and all work to be done in workman-like manner, according to standard practices. Any deviations or alteration from the specifications must be indicated on the bid form for each item and upon request, product data for same must be submitted by the time specified by the Purchasing Department.

DELIVERY: FOB JEFFERSON PARISH

INDICATE DELIVERY DATE ON EQUIPMENT AND SUPPLIES

10-14 days

INDICATE STARTING TIME (IN DAYS) FOR CONSTRUCTION WORK

INDICATE COMPLETION TIME (IN DAYS) FOR CONSTRUCTION WORK

In the event that addenda are issued with this bid, bidders MUST acknowledge all addenda on the bid form. Bidder must acknowledge receipt of an addendum on the bid form as indicated. Failure to acknowledge any addendum on the bid form will result in bid rejection.

Acknowledge Receipt of Addenda: NUMBER: _____

NUMBER: _____

NUMBER: _____

NUMBER: _____

LOUISIANA CONTRACTOR'S LICENSE NO.: (if applicable) _____

*** ALL BIDDERS MUST COMPLETE SECTION BELOW ***	
FIRM NAME: Coburn's Supply Company	
SIGNATURE: (Must be signed here)	TITLE: OSR
PRINT OR TYPE NAME: Michael Self	
ADDRESS: 1849 Commercial Drive	
CITY, STATE: Harvey, La	ZIP: 70058
TELEPHONE: (225) 369-3395	FAX: (504) 348-1095
EMAIL ADDRESS: msself@coburns.com	

TOTAL PRICE OF ALL BID ITEMS: \$ 4,956.00

DATE: 7/20/2017

Page: 5

INVITATION TO BID FROM JEFFERSON PARISH - continued

BID NO.: 50-00120417

SEALED BID

ITEM NUMBER	QUANTITY	U/M	DESCRIPTION OF ARTICLES	UNIT PRICE QUOTED	TOTALS
1	840.00	EA	<p>ONE TIME PURCHASE OF CEMENT MORTAR MIX</p> <p>0010 CEMENT MORTAR MIX / 80 LB BAGS / QUIKRETE #1102, SK #00-0481790 Quoting Ash Grove/ Sakrete Mortar Mix 80# FOR: EB WAREHOUSE ATTN: MARK BUTTERY</p> <p>PLEASE INCLUDE IF EXTRA DELIVERY CHARGES</p> <p>DELIVERY/INVOICE TO: JEFFERSON PARISH EASTBANK WAREHOUSE ATTN: MARK BUTTERY 4901 JEFFERSON HWY. JEFFERSON, LA 70121</p>	5.90	4,956.00



JEFFERSON PARISH

Department of Purchasing

Michael S. Yenni
Parish President

Brenda C. Patel
Director

CHANGES TO JEFFERSON PARISH BIDDING PROCEDURES

The East bank Office of Purchasing is now open! We are located in the Joseph S. Yenni Building, 1221 Elmwood Park Blvd., Suite 404, Jefferson, LA 70123. Bidders may submit bid responses at this location, pending authorization in each bid package. **Bidders should carefully read and must respond accordingly per the requirements of the bid packages. NOTE: Bidders submitting bids on the day of bid opening, bidders must submit at the West Bank location only.**

Other Changes Continued:

- For all advertised sealed bids, written evidence of signature authority must be included with bid submission.
- Current W9 Forms and vendor applications may be submitted at any time; however, if your company is not registered and/or a current W-9 form is not on file, a current W-9 form must be supplied upon contract execution, should you be awarded a contract and/or issued a purchase order.
- Upon contract execution, successful bidder must produce final insurance certificates per standard Jefferson Parish insurance requirements. Proof of insurance is required for bidding purposes. Bidders must read the insurance requirements attachment included in each bid package for specific instructions.

Bidders should reference the "Additional Requirements" section of the bid instructions and/or the "Important Notice to Bidders" included in the bid package for specific requirements to respond accordingly.

For more information, please call Jefferson Parish Purchasing at 504-364-2678.

General Government Bldg. – 200 Derbigny St – Suite 4400 – Gretna, LA 70053

Office 504.364.2678 – Fax 504.364.2693

Email: Purchasing@jeffparish.net Website: www.jeffparish.net

Client#: 2492

COBSUP

ACORD™**CERTIFICATE OF LIABILITY INSURANCE**

DATE (MM/DD/YYYY)

11/10/2016

THIS CERTIFICATE IS ISSUED AS A MATTER OF INFORMATION ONLY AND CONFERS NO RIGHTS UPON THE CERTIFICATE HOLDER. THIS CERTIFICATE DOES NOT AFFIRMATIVELY OR NEGATIVELY AMEND, EXTEND OR ALTER THE COVERAGE AFFORDED BY THE POLICIES BELOW. THIS CERTIFICATE OF INSURANCE DOES NOT CONSTITUTE A CONTRACT BETWEEN THE ISSUING INSURER(S), AUTHORIZED REPRESENTATIVE OR PRODUCER, AND THE CERTIFICATE HOLDER.

IMPORTANT: If the certificate holder is an ADDITIONAL INSURED, the policy(ies) must be endorsed. If SUBROGATION IS WAIVED, subject to the terms and conditions of the policy, certain policies may require an endorsement. A statement on this certificate does not confer rights to the certificate holder in lieu of such endorsement(s).

PRODUCER J. S. Edwards & Sherlock Insurance Agency, LLP P. O. 22237 Beaumont, TX 77720	CONTACT NAME: Ginny Johnson PHONE (A/C, No, Ext): 409 832-7736 FAX (A/C, No): 409-833-1721 E-MAIL ADDRESS: ginnys@edwardsandsherlock.com																					
INSURED Coburn Supply Co Inc P O Box 2177 Beaumont, TX 77704	<table border="1"> <tr> <th colspan="2">INSURER(S) AFFORDING COVERAGE</th><th>NAIC #</th></tr> <tr> <td>INSURER A:</td><td>Liberty Insurance Corporation</td><td>42404</td></tr> <tr> <td>INSURER B:</td><td>Liberty Mutual Fire Insurance C</td><td>23035</td></tr> <tr> <td>INSURER C:</td><td></td><td></td></tr> <tr> <td>INSURER D:</td><td></td><td></td></tr> <tr> <td>INSURER E:</td><td></td><td></td></tr> <tr> <td>INSURER F:</td><td></td><td></td></tr> </table>	INSURER(S) AFFORDING COVERAGE		NAIC #	INSURER A:	Liberty Insurance Corporation	42404	INSURER B:	Liberty Mutual Fire Insurance C	23035	INSURER C:			INSURER D:			INSURER E:			INSURER F:		
INSURER(S) AFFORDING COVERAGE		NAIC #																				
INSURER A:	Liberty Insurance Corporation	42404																				
INSURER B:	Liberty Mutual Fire Insurance C	23035																				
INSURER C:																						
INSURER D:																						
INSURER E:																						
INSURER F:																						

COVERAGES**CERTIFICATE NUMBER:****REVISION NUMBER:**

THIS IS TO CERTIFY THAT THE POLICIES OF INSURANCE LISTED BELOW HAVE BEEN ISSUED TO THE INSURED NAMED ABOVE FOR THE POLICY PERIOD INDICATED. NOTWITHSTANDING ANY REQUIREMENT, TERM OR CONDITION OF ANY CONTRACT OR OTHER DOCUMENT WITH RESPECT TO WHICH THIS CERTIFICATE MAY BE ISSUED OR MAY PERTAIN, THE INSURANCE AFFORDED BY THE POLICIES DESCRIBED HEREIN IS SUBJECT TO ALL THE TERMS, EXCLUSIONS AND CONDITIONS OF SUCH POLICIES. LIMITS SHOWN MAY HAVE BEEN REDUCED BY PAID CLAIMS.

INSR LTR	TYPE OF INSURANCE	ADDL SUBR INSR WVD	POLICY NUMBER	POLICY EFF (MM/DD/YYYY)	POLICY EXP (MM/DD/YYYY)	LIMITS
A	GENERAL LIABILITY <input checked="" type="checkbox"/> COMMERCIAL GENERAL LIABILITY <input type="checkbox"/> CLAIMS-MADE <input checked="" type="checkbox"/> OCCUR GEN'L AGGREGATE LIMIT APPLIES PER: <input type="checkbox"/> POLICY <input type="checkbox"/> PRO-JECT <input type="checkbox"/> LOC		TB7691460237036	11/01/2016	11/01/2017	EACH OCCURRENCE \$1,000,000 DAMAGE TO RENTED PREMISES (Ea occurrence) \$100,000 MED EXP (Any one person) \$5,000 PERSONAL & ADV INJURY \$1,000,000 GENERAL AGGREGATE \$2,000,000 PRODUCTS - COMP/OP AGG \$2,000,000 \$
B	AUTOMOBILE LIABILITY <input checked="" type="checkbox"/> ANY AUTO <input type="checkbox"/> ALL OWNED AUTOS <input type="checkbox"/> SCHEDULED AUTOS <input checked="" type="checkbox"/> HIRED AUTOS <input checked="" type="checkbox"/> NON-OWNED AUTOS		AS2691460237026	11/01/2016	11/01/2017	COMBINED SINGLE LIMIT (Ea accident) \$1,000,000 BODILY INJURY (Per person) \$ BODILY INJURY (Per accident) \$ PROPERTY DAMAGE (Per accident) \$ \$
A	<input checked="" type="checkbox"/> UMBRELLA LIAB <input checked="" type="checkbox"/> OCCUR <input type="checkbox"/> EXCESS LIAB <input type="checkbox"/> CLAIMS-MADE <input type="checkbox"/> DED <input checked="" type="checkbox"/> RETENTION \$10000		TH7691460237056	11/01/2016	11/01/2017	EACH OCCURRENCE \$15,000,000 AGGREGATE \$15,000,000 \$
A	WORKERS COMPENSATION AND EMPLOYERS' LIABILITY ANY PROPRIETOR/PARTNER/EXECUTIVE OFFICER/MEMBER EXCLUDED? <input checked="" type="checkbox"/> Y <input checked="" type="checkbox"/> N (Mandatory in NH) If yes, describe under DESCRIPTION OF OPERATIONS below	N/A	WA769D460237016	11/01/2016	11/01/2017	<input checked="" type="checkbox"/> WC STATU-TORY LIMITS <input type="checkbox"/> OTH-ER E.L. EACH ACCIDENT \$1,000,000 E.L. DISEASE - EA EMPLOYEE \$1,000,000 E.L. DISEASE - POLICY LIMIT \$1,000,000

DESCRIPTION OF OPERATIONS / LOCATIONS / VEHICLES (Attach ACORD 101, Additional Remarks Schedule, if more space is required)

Certificate Holder Continued: Its Districts, Departments, Agencies under the direction of the Parish

President and Parish Council Engineering Department

Resolution NO.: 125223

The General Liability & Auto Liability policies include a blanket automatic additional insured endorsement that provides additional insured status only when there is a written contract that requires such status.

(See Attached Descriptions)

CERTIFICATE HOLDER**CANCELLATION**

The Parish of Jefferson,
 1221 Elmwood Park Blvd.,
 Ste. 802
 New Orleans, LA 70123

SHOULD ANY OF THE ABOVE DESCRIBED POLICIES BE CANCELLED BEFORE THE EXPIRATION DATE THEREOF, NOTICE WILL BE DELIVERED IN ACCORDANCE WITH THE POLICY PROVISIONS.

AUTHORIZED REPRESENTATIVE

Craig Sherlock

© 1988-2010 ACORD CORPORATION. All rights reserved.

DESCRIPTIONS (Continued from Page 1)

Primary & Non-Contributory coverage is provided on a blanket basis when there is a written contract that requires such status with respects to the General Liability coverage. A Walver of Subrogation is included on blanket basis with respects to the Workers' Compensation, General Liability & Auto Liability status only when there is a written contract that requires such status. Umbrella is written on follow form.

Same Product Different
Packaging. Manufacturer
Sends Product in 2
Different Bags.



packaging mortar mix



1. Product Name

ASH GROVE® Mortar Mix
Product Number: 350

2. Manufacturer

ASH GROVE PACKAGING GROUP
10809 Executive Center Drive, Ste. 321
Little Rock, AR 72211
Phone: (888) 289.1117
Fax: (501) 224.3882
www.ashgrovepkg.com

3. Product Description

ASH GROVE® Mortar Mix is ideal for laying brick, block and stone or repairing masonry walls. ASH GROVE® Mortar Mix is thoroughly pre-mixed to ensure maximum strength and workability.

BASIC USE:

Recommended for laying brick, block or stone and for repairing masonry walls of:

- Fireplaces
- Chimneys
- Stucco
- Tuck-pointing

COMPOSITION & MATERIALS:

ASH GROVE® Mortar Mix is a uniformly blended and ready to use mixture of cement, graded sand and other approved ingredients specifically formulated for masonry applications.

4. Advantages/Benefits

ASH GROVE® Mortar Mix has several advantages and features including:

- High durability and impact resistant
- Easy to finish and cure
- Strong, durable and long-lasting mortar bond
- Uniform aggregate sizes ensure easier mixing
- Thoroughly pre-blended mixture requires no dry mixing

5. Preparation

All surfaces that will be in contact with ASH GROVE® Mortar Mix must be entirely free from oil, grease, or any other foreign substances which may interfere with the bond and chemical actions of the material.

Prior to laying brick, block or stone dampen the exposed surfaces and clean thoroughly with water. Make sure that all supportive footings are substantial to hold the stress load.

For mortar repairs chisel out mortar joints to ¾" depth. Remove all loose mortar and sand and dampen the

cleaned joint with water prior to application of masonry mortar mix.

6. Mixing Instructions

Pour the dry contents into a wet mixing container such as a mortar box or wheelbarrow. Form a crater in middle of dry mix for adding water. Add water slowly, mixing thoroughly until mortar reaches a 'plastic-like' consistency. Avoid a 'soupy' mix; too much water will weaken the mortar.

For large projects a concrete mixer is recommended. If a mixer is used, mix dry contents thoroughly with water for 6 minutes to achieve 'plastic-like' consistency.

For colored mortar, ASH GROVE® Cement Color can be added and mixed thoroughly into the dry cement-based material prior to adding water to achieve decorative and creative colors. Available colors are red, black, buff and brown.

7. Placement

For laying brick, block or stone:

Starting in a corner, apply a ½" thick bed of ASH GROVE® Mortar Mix onto the footing. Set corner brick or block into the mortar bed and tap into place. Lay successive masonry units into position after first applying mortar to the head joint and tap into place, maintaining at least 3/8" thick mortar joint. Not recommended for walkways/paths.

For mortar repairs:

Use a tuck-point trowel or jointing tool to apply mortar on the brick, block or stone and compact.

8. Curing

Clean all excess mortar off the brick and block faces as soon as possible. Use a jointing tool to smooth and seal the mortar joints after the joint becomes thumbprint hard. Doing so will make the joint watertight and provide a neat appearance. In very hot and dry weather conditions, spray water onto joints to prevent premature drying of the mortar.

9. Technical Information

ASTM SPECIFICATIONS:

- Meets requirements of ASTM C270 specifications for Type N mortar and ASTM C387 specifications when used as directed.

COMPRESSIVE STRENGTH:

- 28 days 750 psi (5.16 Mpa)

10. Limitations

Adhering to recommended water additions is very important. Exceeding the maximum recommended water content per bag will result in inferior physical properties.



packaging
mortar mix (cont.)

Mortar will not bond well to wood, asphalt, exposed walkways or any other foreign substances.

Do not place when temperatures are below 40° F. In cold weather, use warm water and protect from freezing for 48 hours.

11. Coverage

One 80 lb. bag (36.29 kg) lays approximately 40 standard bricks or 15 eight-inch blocks.

40 bricks or 15 - 8" blocks	80 lb. bag (36.29 kg)
30 bricks or 9 - 8" blocks	60 lb. bag (27.22 kg)
5 bricks or 2 - 8" blocks	10 lb. box (4.54 kg)

12. Warning

ASH GROVE® Mortar Mix contains cement and sand. Normal safety wear such as protective clothing, boots, rubber gloves, dust masks, eye safety glasses should be worn while handling cement-based products. Material Safety Data Sheets are available upon request or at www.ashgrovepkg.com.

13. Limited Warranty

This product meets or exceeds applicable ASTM C270 and ASTM C387 standards in force at the time of packaging. Packager, having no control over the use of the material, does not guarantee finished work. Replacement of any defective product or refund of the purchase price of defective product shall be the buyer's sole remedy under this warranty.

THIS LIMITED WARRANTY EXCLUDES ANY LIABILITY FOR ANY CONSEQUENTIAL, INCIDENTAL, INDIRECT OR SPECIAL DAMAGES.

EXCEPT FOR THE LIMITED WARRANTY MADE ABOVE, PACKAGER SPECIFICALLY DISCLAIMS AND EXCLUDES ANY OTHER EXPRESS WARRANTY, ANY IMPLIED WARRANTY OF MERCHANTABILITY OF GOODS AND ANY IMPLIED WARRANTY OF FITNESS OF GOODS FOR ANY PARTICULAR PURPOSE.

Ash Grove Packaging reserves the right to change specifications without notice.

Mortars Group 1

Safety Data Sheet

according to the Hazard Communication Standard (CFR29 1910.1200) HazCom 2012

Date of issue: 03/25/2015

Revision date: 03/25/2015

Version: 1.0

SECTION 1: Identification of the substance/mixture and of the company/undertaking

1.1. Product identifier

Product name : Granite Setting Mortar - Grey
Mortar Mix
PLM
PL (PRS)
Pro Mix PLO
Pro Mix Stone Veneer Mortar PM
Pro Mix Stucco
Portland Lime Mortar Type N (PLN)
Portland Lime Mortar Type S (PLS)
Rock Mud
Stone Veneer Mortar
Tile Mortar
White Mortar

Product code : Not available

1.2. Relevant identified uses of the substance or mixture and uses advised against

Use of the substance/mixture : Mortar mixes for construction use.

1.3. Details of the supplier of the safety data sheet

Precision Packaging Inc. or Materials Packaging Corporation
10809 Executive Center, Suite 321
Little Rock, AR 72211 - USA
T 501-224-3882

1.4. Emergency telephone number

Emergency number : CHEMTREC (800) 424-9300

SECTION 2: Hazards identification

2.1. Classification of the substance or mixture

GHS-US classification

Skin corrosion 1B

Serious Eye Damage 1

Skin Sensitization 1

Carcinogenicity 1A

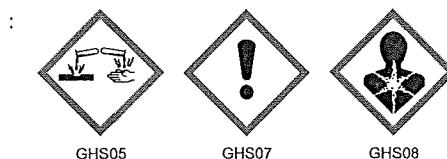
Specific Target Organ Toxicity After Single Exposure 3

Specific Target Organ Toxicity After Repeated Exposure 1

2.2. Label elements

GHS-US labelling

Hazard pictograms (GHS-US)



Signal word (GHS-US) : Danger

Hazard statements (GHS-US) : Causes severe skin burns and eye damage. May cause an allergic skin reaction. May cause cancer. May cause respiratory irritation. Causes damage to lungs through prolonged or repeated exposure.

Prevention statements (GHS-US) : Read label before use. Keep out of reach of children. Do not get in eyes, on skin or on clothing. Do not breathe dust. Use the proper respirator, when necessary, to avoid injury. Wash exposed skin thoroughly after handling. Wear protective gloves, clothing, and eye and face protection.

Response statements (GHS-US) : If exposed or concerned: Get medical attention. If swallowed or in eyes: Immediately call a doctor. Rinse mouth. Do NOT induce vomiting. If on skin (or hair): Take off immediately all contaminated clothing and wash before reuse. Wash exposed skin with plenty of clean water and mild soap. If inhaled: Remove person to fresh air and keep comfortable for breathing. Use only outdoors or in a well-ventilated area.

Storage statements (GHS-US)

Disposal statements (GHS-US)

Supplemental Information

Dispose of contents and container in accordance with all local, state, and federal regulations.
Read and Follow all precautions listed in the Safety Data Sheet available on request or at

Mortars Group 1

Safety Data Sheet

according to the Hazard Communication Standard (CFR29 1910.1200) HazCom 2012

Ashgrovepkg.com. Additional information on the selection and use of respirators can be found in the *NIOSH Respirator Selection Logic* (DHHS [NIOSH] Publication No. 2005-100) and the *NIOSH Guide to Industrial Respiratory Protection* (DHHS [NIOSH] Publication No. 87-116) available at <http://www.cdc.gov/niosh/docs/87-116/>.

This product contains greater than 0.1% crystalline silica. Crystalline silica has been linked to cancer, silicosis, and other lung problems in conditions of prolonged airborne over-exposure.

Keep product dry until use. Avoid contact with bleed water from wet product. Clothing saturated with wet product can result in delayed, serious alkali skin burns.

2.3. Other hazards

Other hazards not contributing to the classification : Not applicable.

2.4. Unknown acute toxicity (GHS US)

Pro Mix PLO: 11 % of the mixture consists of ingredient(s) of unknown acute toxicity.

Pro Mix Stucco: 19 % of the mixture consists of ingredient(s) of unknown acute toxicity.

Tile Mortar: 20 % of the mixture consists of ingredient(s) of unknown acute toxicity.

Mortar Mix: 21 % of the mixture consists of ingredient(s) of unknown acute toxicity.

Pro Mix Stone Veneer Mortar PM: 22 % of the mixture consists of ingredient(s) of unknown acute toxicity.

Granite Setting Mortar - Grey, White Mortar: 23 % of the mixture consists of ingredient(s) of unknown acute toxicity.

PL (PRS), Portland Lime Mortar Type N (PLN), Rock Mud: 24 % of the mixture consists of ingredient(s) of unknown acute toxicity.

PLM: 25 % of the mixture consists of ingredient(s) of unknown acute toxicity.

Portland Lime Mortar Type S (PLS), Stone Veneer Mortar: 27 % of the mixture consists of ingredient(s) of unknown acute toxicity.

SECTION 3: Composition/information on ingredients

3.1. Substance

Not applicable.

3.2. Mixture

Name	Product identifier	%	GHS-US classification
Quartz	(CAS No) 14808-60-7	72.5 - 79	Carc. 1A STOT RE 1
Cement, portland, chemicals	(CAS No) 65997-15-1	9 - 22	Skin Irrit. 2 Eye Dam. 1 Skin Sens. 1 STOT SE 3
Calcium magnesium hydroxide (CaMg(OH) ₄)	(CAS No) 39445-23-3	4 - 10 ¹	Skin Irrit. 2 Eye Dam. 1 STOT SE 3
Calcium hydroxide	(CAS No) 1305-62-0	2 - 7	Skin Irrit. 2 Eye Dam. 1 STOT SE 3
Iron oxide (Fe ₂ O ₃)	(CAS No) 1309-37-1	1 - 7 ²	Not classified.
Magnesium oxide (MgO)	(CAS No) 1309-48-4	1 - 5.5	Not classified.
Limestone	(CAS No) 1317-65-3	0.5 - 3.5	Not classified.
Gypsum (Ca(SO ₄).2H ₂ O)	(CAS No) 13397-24-5	0.9 - 1.9	Not classified.
Calcium oxide	(CAS No) 1305-78-8	0.4 - 1	Skin Corr. 1C
Flue dust, portland cement	(CAS No) 68475-76-3	0.3 - 0.6 ³	Skin Irrit. 2 Eye Dam. 1 Skin Sens. 1 STOT SE 3

¹ Granite Setting Mortar - Grey, Mortar Mix, PLM, PL (PRS), Portland Lime Mortar Type N (PLN), Portland Lime Mortar Type S (PLS), Rock Mud, Stone Veneer Mortar, Tile Mortar

² PLM, Portland Lime Mortar Type N (PLN), Portland Lime Mortar Type S (PLS), Pro Mix PLO, Pro Mix Stone Veneer Mortar PM, Stone Veneer Mortar

³ Pro Mix PLO, Pro Mix Stone Veneer Mortar PM, Pro Mix Stucco, White Mortar

SECTION 4: First aid measures

4.1. Description of first aid measures

First-aid measures after inhalation	: If breathing is difficult, remove victim to fresh air and keep at rest in a position comfortable for breathing. Get immediate medical advice/attention.
First-aid measures after skin contact	: In case of contact, immediately flush skin with plenty of water. Remove contaminated clothing. Wash contaminated clothing before reuse. Get immediate medical advice/attention.
First-aid measures after eye contact	: In case of contact, immediately flush eyes with plenty of water for at least 15 minutes. If easy to do, remove contact lenses, if worn. Get medical attention immediately.
First-aid measures after ingestion	: If swallowed, do NOT induce vomiting unless directed to do so by medical personnel. Never give anything by mouth to an unconscious person. Get immediate medical advice/attention.

Mortars Group 1

Safety Data Sheet

according to the Hazard Communication Standard (CFR29 1910.1200) HazCom 2012

4.2. Most important symptoms and effects, both acute and delayed

Symptoms/injuries after inhalation	: May cause respiratory tract irritation.
Symptoms/injuries after skin contact	: Causes severe skin burns. Symptoms may include redness, pain, blisters. Do not allow product to harden around any body part or allow continuous, prolonged contact with skin. May cause sensitization by skin contact.
Symptoms/injuries after eye contact	: Causes serious eye damage. Symptoms may include discomfort or pain, excess blinking and tear production, with marked redness and swelling of the conjunctiva.
Symptoms/injuries after ingestion	: May be harmful if swallowed. May cause stomach distress, nausea or vomiting.

4.3. Indication of any immediate medical attention and special treatment needed

Symptoms may not appear immediately. In case of accident or if you feel unwell, seek medical advice immediately (show the label or SDS where possible).

SECTION 5: Firefighting measures

5.1. Extinguishing media

Suitable extinguishing media	: Treat for surrounding material.
Unsuitable extinguishing media	: None known.

5.2. Special hazards arising from the substance or mixture

Fire hazard	: Product does not burn; however its packaging may. Products of combustion may include, and are not limited to: oxides of carbon.
-------------	---

5.3. Advice for firefighters

Firefighting instructions	: Keep upwind of fire. Wear full fire fighting turn-out gear (full Bunker gear) and respiratory protection (SCBA).
---------------------------	--

SECTION 6: Accidental release measures

6.1. Personal precautions, protective equipment and emergency procedures

General measures	: Use personal protection recommended in Section 8. Isolate the hazard area and deny entry to unnecessary and unprotected personnel. Avoid contact with skin and eyes.
------------------	--

6.2. Methods and material for containment and cleaning up

For containment	: Contain spill, then place in a suitable container. Minimize dust generation. Do not flush to sewer or allow to enter waterways. Use appropriate Personal Protective Equipment (PPE).
Methods for cleaning up	: Vacuum or sweep material and place in a disposal container. Provide ventilation.

6.3. Reference to other sections

No additional information available.

SECTION 7: Handling and storage

7.1. Precautions for safe handling

Precautions for safe handling	: Avoid contact with skin and eyes. Avoid generating and breathing dust. Do not swallow. Good housekeeping is important to prevent accumulation of dust. The use of compressed air for cleaning clothing, equipment, etc, is not recommended. Handle and open container with care. When using do not eat, drink or smoke.
Hygiene measures	: Launder contaminated clothing before reuse. Wash hands before eating, drinking, or smoking.

7.2. Conditions for safe storage, including any incompatibilities

Storage conditions	: Keep out of the reach of children. Avoid any dust buildup by frequent cleaning and suitable construction of the storage area. Do not store in an area equipped with emergency water sprinklers. Clean up spilled material promptly.
--------------------	---

7.3. Specific end use(s)

No additional information available.

SECTION 8: Exposure controls/personal protection

8.1. Control parameters

Quartz (14808-60-7)		
ACGIH	ACGIH TWA (mg/m ³)	0.025 mg/m ³ (respirable fraction)
OSHA	OSHA PEL (TWA) (mg/m ³)	(30)/(%SiO ₂ + 2) mg/m ³ (total dust) ; (250)/(%SiO ₂ + 5) mppcf (respirable fraction) ; (10)/(%SiO ₂ + 2) mg/m ³ (respirable fraction)
Cement, portland, chemicals (65997-15-1)		
ACGIH	ACGIH TWA (mg/m ³)	1 mg/m ³ (respirable fraction)

Mortars Group 1

Safety Data Sheet

according to the Hazard Communication Standard (CFR29 1910.1200) HazCom 2012

Cement, portland, chemicals (65997-15-1)		
OSHA	OSHA PEL (TWA) (mg/m³)	15 mg/m³ (total dust) ; 5 mg/m³ (respirable fraction)
Calcium magnesium hydroxide (CaMg(OH)4) (39445-23-3)		
ACGIH	Not applicable	
OSHA	Not applicable	
Calcium hydroxide (1305-62-0)		
ACGIH	ACGIH TWA (mg/m³)	5 mg/m³
OSHA	OSHA PEL (TWA) (mg/m³)	15 mg/m³ (total dust) ; 5 mg/m³ (respirable fraction)
Iron oxide (Fe2O3) (1309-37-1)		
ACGIH	ACGIH TWA (mg/m³)	5 mg/m³ (respirable fraction)
OSHA	OSHA PEL (TWA) (mg/m³)	10 mg/m³ (fume) ; 15 mg/m³ (total dust) ; 5 mg/m³ (respirable fraction)
Magnesium oxide (MgO) (1309-48-4)		
ACGIH	ACGIH TWA (mg/m³)	10 mg/m³ (inhalable fraction)
OSHA	OSHA PEL (TWA) (mg/m³)	15 mg/m³ (fume, total particulate)
Limestone (1317-65-3)		
ACGIH	ACGIH TWA (mg/m³)	10 mg/m³ (total dust) ;
OSHA	OSHA PEL (TWA) (mg/m³)	15 mg/m³ (total dust) ; 5 mg/m³ (respirable fraction)
Gypsum (Ca(SO4).2H2O) (13397-24-5)		
ACGIH	ACGIH TWA (mg/m³)	10 mg/m³ (inhalable fraction)
OSHA	OSHA PEL (TWA) (mg/m³)	15 mg/m³ (total dust) ; 5 mg/m³ (respirable fraction)
Calcium oxide (1305-78-8)		
ACGIH	ACGIH TWA (mg/m³)	2 mg/m³
OSHA	OSHA PEL (TWA) (mg/m³)	5 mg/m³
Flue dust, portland cement (68475-76-3)		
ACGIH	Not applicable	10 mg/m³ (as inhalable fraction, PNOS) ; 3 mg/m³ (as respirable fraction, PNOS)
OSHA	Not applicable	15 mg/m³ (as total dust, PNOR) ; 5 mg/m³ (as respirable fraction, PNOR)

8.2. Exposure controls

Appropriate engineering controls	: Use ventilation adequate to keep exposures (airborne levels of dust, fume, vapor, etc.) below recommended exposure limits.
Hand protection	: Wear suitable gloves.
Eye protection	: Wear approved eye protection (properly fitted dust- or splash-proof chemical safety goggles) and face protection (face shield).
Skin and body protection	: Wear suitable clothing common to do-it-yourself projects.
Respiratory protection	: A NIOSH approved dust mask or filtering facepiece is recommended in poorly ventilated areas or when permissible exposure limits may be exceeded. Respirators should be selected by and used under the direction of a trained health and safety professional following requirements found in OSHA's respirator standard (29 CFR 1910.134) and ANSI's standard for respiratory protection (Z88.2).
Environmental exposure controls	: Maintain levels below Community environmental protection thresholds.
Other information	: Handle according to established industrial hygiene and safety practices. Do not eat, smoke or drink where material is handled, processed or stored. Wash hands carefully before eating or smoking.

Mortars Group 1

Safety Data Sheet

according to the Hazard Communication Standard (CFR29 1910.1200) HazCom 2012

SECTION 9: Physical and chemical properties

9.1. Information on basic physical and chemical properties

Physical state	: Solid
Appearance	: Powder
Colour	: Various
Odour	: No data available
Odour threshold	: No data available
pH	: Highly alkaline when wet
Melting point	: No data available
Freezing point	: No data available
Boiling point	: No data available
Flash point	: No data available
Relative evaporation rate (butylacetate=1)	: No data available
Flammability (solid, gas)	: Not flammable
Explosive limits	: No data available
Explosive properties	: No data available
Oxidising properties	: No data available
Vapour pressure	: No data available
Relative density	: No data available
Relative vapour density at 20 °C	: No data available
Solubility	: No data available
Partition coefficient: n-octanol/water	: No data available
Log Kow	: No data available
Auto-ignition temperature	: No data available
Decomposition temperature	: No data available
Viscosity	: No data available
Viscosity, kinematic	: No data available
Viscosity, dynamic	: No data available

9.2. Other information

VOC content	: No data available
-------------	---------------------

SECTION 10: Stability and reactivity

10.1. Reactivity

No dangerous reaction known under conditions of normal use. An alkali reaction from components of portland cement will corrode aluminum.

10.2. Chemical stability

Stable under normal storage conditions. Keep dry in storage.

10.3. Possibility of hazardous reactions

No dangerous reaction known under conditions of normal use. Do not mix with other chemicals.

10.4. Conditions to avoid

Moisture – product must be kept dry until ready to use.

10.5. Incompatible materials

None known.

10.6. Hazardous decomposition products

None known.

SECTION 11: Toxicological information

11.1. Information on toxicological effects

Acute toxicity	: Not classified.
----------------	-------------------

Mortars Group 1	
LD50 oral rat	> 2000 mg/kg
LD50 dermal rabbit	No data available.

Mortars Group 1

Safety Data Sheet

according to the Hazard Communication Standard (CFR29 1910.1200) HazCom 2012

Mortars Group 1	
LC50 inhalation rat	No data available.
Calcium hydroxide (1305-62-0)	
LD50 oral rat	7340 mg/kg
Iron oxide (Fe₂O₃) (1309-37-1)	
LD50 oral rat	> 10000 mg/kg
Magnesium oxide (MgO) (1309-48-4)	
LD50 oral rat	>5000 mg/kg
Limestone (1317-65-3)	
LD50 oral rat	6450 mg/kg
Calcium oxide (1305-78-8)	
LD50 oral rat	> 2000 mg/kg
Flue dust, portland cement (68475-76-3)	
LD50 oral rat	>1848 mg/kg, rat
LD50 dermal rabbit	> 2000 mg/kg
LC50 inhalation rat	>6.04 mg/l/4h

Skin corrosion/irritation	: Causes severe skin burns.
Serious eye damage/irritation	: Causes serious eye damage.
Respiratory or skin sensitisation	: May cause an allergic skin reaction.
Germ cell mutagenicity	: Based on available data, the classification criteria are not met.
Carcinogenicity	: May cause cancer.

Quartz (14808-60-7)	
IARC group	1 - Carcinogenic to humans
National Toxicology Program (NTP) Status	2 - Known Human Carcinogens

Iron oxide (Fe₂O₃) (1309-37-1)	
IARC group	3 - Not classifiable

Reproductive toxicity	: Based on available data, the classification criteria are not met.
Specific target organ toxicity (single exposure)	: May cause respiratory irritation.
Specific target organ toxicity (repeated exposure)	: Causes damage to organs through prolonged or repeated exposure. (Respirable crystalline silica in the form of quartz or cristobalite from occupational sources is listed by the International Agency for Research on Cancer (IARC) and National Toxicology Program (NTP) as a lung carcinogen. Prolonged exposure to respirable crystalline silica has been known to cause silicosis, a lung disease, which may be disabling. While there may be a factor of individual susceptibility to a given exposure to respirable silica dust, the risk of contracting silicosis and the severity of the disease is clearly related to the amount of dust exposure and the length of time (usually years) of exposure.)
Aspiration hazard	: Based on available data, the classification criteria are not met.
Symptoms/injuries after inhalation	: May cause respiratory tract irritation.
Symptoms/injuries after skin contact	: Causes severe skin burns. Symptoms may include redness, pain, blisters. Do not allow product to harden around any body part or allow continuous, prolonged contact with skin. May cause sensitization by skin contact.
Symptoms/injuries after eye contact	: Causes serious eye damage. Symptoms may include discomfort or pain, excess blinking and tear production, with marked redness and swelling of the conjunctiva.
Symptoms/injuries after ingestion	: May be harmful if swallowed. May cause stomach distress, nausea or vomiting.

SECTION 12: Ecological information

12.1. Toxicity	
Ecology - general	: No ecological consideration when used according to directions. . Do not flush to sewer or allow to enter waterways.

12.2. Persistence and degradability

Mortars Group 1	
Persistence and degradability	No data available.

Mortars Group 1

Safety Data Sheet

according to the Hazard Communication Standard (CFR29 1910.1200) HazCom 2012

12.3. Bioaccumulative potential

Mortars Group 1

Bioaccumulative potential	No data available.
---------------------------	--------------------

12.4. Mobility in soil

Mortars Group 1

Ecology - soil	No data available.
----------------	--------------------

12.5. Other adverse effects

Effect on the global warming : No known ecological damage caused by this product.

SECTION 13: Disposal considerations

13.1. Waste treatment methods

Waste disposal recommendations : This material must be disposed of in accordance with all local, state, provincial, and federal regulations.

SECTION 14: Transport information

In accordance with DOT

Not regulated for transport.

Additional information

Other information : No supplementary information available.

SECTION 15: Regulatory information

15.1. US Federal regulations

All components of this product are listed, or excluded from listing, on the United States Environmental Protection Agency Toxic Substances Control Act (TSCA) inventory except for:

Gypsum (Ca(SO ₄).2H ₂ O)	CAS No 13397-24-5
---	-------------------

15.2. US State regulations

Mortars Group 1

State or local regulations	This product contains Crystalline Silica, Quartz and may also contain trace amounts of other chemicals known to the State of California to cause cancer, birth defects or other reproductive harm.
----------------------------	--

SECTION 16: Other information

Date of issue : 03/25/2015

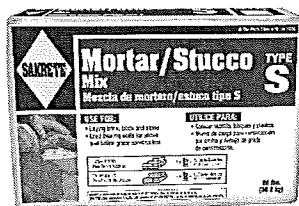
Other information : None.

Disclaimer: We believe the statements, technical information and recommendations contained herein are reliable, but they are given without warranty or guarantee of any kind. The information contained in this document applies to this specific material as supplied. It may not be valid for this material if it is used in combination with any other materials. It is the user's responsibility to satisfy oneself as to the suitability and completeness of this information for the user's own particular use.



MORTAR/STUCCO MIX TYPE S

➤ The Pro's Choice Since 1936



Sakrete® Type S Mortar/Stucco Mix is a preblended mixture of sand and masonry cement or sand, lime and portland cement. For laying brick, block and stone in load bearing walls and below grade applications. Build walls, planters, and chimneys. For tuck pointing or repairing existing mortar joints. Can also be used for scratch, brown and finish of walls. Meets property requirements of ASTM C270 and C1714.

Features:

- High Strength >1,800 psi
- Meets property requirements of ASTM C1714 and ASTM C270
- Ideal for projects requiring structural strength for brick and block foundations.
- Applications from 1/4" (6 mm) to 1/2" (12 mm)
- Can be color pigmented with the Sakrete Cement Colors

Use For:

- Laying brick or block
- Scratch and brown coat in stucco applications
- Above and below grade applications
- Masonry parge or finish coating
- Interior or exterior
- Brick and block tuck pointing

Yield/Water/Coverage:

Bag Size	Yield: For laying brick, block, or cultured stone	Yield: For stucco	Water
40 lb (18.1 kg)	Will lay 6 = 8" (200 mm) concrete block, 18 standard bricks or 5 ft ² (0.5 m ²) of cultured stone	Will cover 35 ft ² (3.3 m ²) at 1/8" (3.2 mm) thick	2.6 qt (2.5 L)
60 lb (27.2 kg)	Will lay 9 = 8" (200 mm) concrete block, 26 standard bricks or 7.5 ft ² (0.7 m ²) of cultured stone	Will cover 50 ft ² (4.3 m ²) at 1/8" (3.2 mm) thick	4.0 qt (3.8 L)
80 lb (36.3 kg)	Will lay 12 = 8" (200 mm) concrete block, 35 standard bricks or 10 ft ² (1.0 m ²) of cultured stone	Will cover 70 ft ² (6.4 m ²) at 1/8" (3.2 mm) thick	5.3 qt (5 L)

NOTE: Yield and water are approximate. The yield above does not allow for waste and spillage.

Technical Data:

Compressive Strength ASTM C270 28 day= >1800 psi
Water Retention >75%

Testing: Mortar should be tested in the field by ASTM C780, standard test method for preconstruction & construction evaluation for mortar for plain & reinforced unit masonry. Due to the procedure differences between ASTM C270 & ASTM C780, the compressive strength values resulting from field sampled mortar are not required nor expected to meet the minimum compressive

strengths of the property specifications of ASTM C270 as tested in controlled laboratory conditions.

DIVISION 4

Masonry Mortaring – 04 05 13

Color: Gray

Preparation/Application:

For best results all materials should be stored between 40°F (4°C) and 80°F (27°C) 24 hours prior to installation.

Refer to:

- ACI 530.1 Specification for Masonry Structures
- International Masonry Industry All-Weather Council (IMIAC)
 - Recommended Practices and Guild Specifications for Cold Weather Masonry Construction
 - Recommended Practices and Guide Specifications for Hot Weather Masonry Construction

New Construction:

When laying brick or block, construct a sound footing above grade. Consult with your local building codes before proceeding. For more information visit Sakrete.com

1. Apply a full bed of mortar onto the base where the brick or block will be placed.
2. When laying brick or block butter the end with mortar before placing into the full bed of mortar.
3. Tap into place while leveling.
4. Tool joints once the mortar has set up enough and is thumb print hard.

Tuck Pointing:

1. Place mortar into the joint with a tuck pointing trowel or grout bag.
2. Use the tuck pointing trowel to tool the joint and compact for a tight neat appearance.

Scratch/Brown/Stucco:

1. Application over masonry must follow ASTM C926 Standard Specification for Application of Portland Cement Based Plaster.
2. Applications over lath must follow ASTM C1063 Standard Specification for Installation of Lathing and Furring to receive interior and exterior Portland cement based plaster.
3. Apply material using a trowel and masonry hawk using enough pressure to compact the material.
4. Texture stucco to match the surrounding area using a plasterer's trowel or finish to desired texture.

NOTE: Check with local building code requirements for proper installation guidelines.

Mixing:

1. Empty contents of Sakrete Type S Mortar/Stucco Mix into a wheelbarrow or mortar pan forming a crater in the center of the dry mix for the addition of clean potable water. Projects requiring multiple bags are mixed much easier with a mechanical mixer.



MORTAR/STUCCO MIX TYPE S

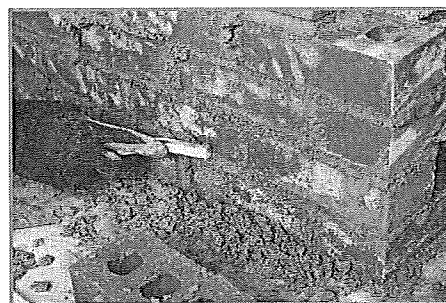
The Pro's Choice Since 1936

2. Add clean potable water (see table for water amounts) or enough to achieve a workable mix. Add additional water if needed. A SOUPY MIX MUST BE AVOIDED.
3. Excess water reduces strength and durability and can cause cracking, dusting or scaling.
4. Re-tempering impairs performance.

Curing:

1. Proper curing is critical for sound results. Curing means maintaining proper moisture and temperature. The material must be kept continuously moist for several days.
2. In hot or windy conditions keep the mortar/stucco damp to promote proper curing.
3. Drape plastic over the wall to help retain moisture.
4. If surface begins to appear dry remove the plastic moisten the surface and replace the plastic.

Can be painted: Using an alkali resistant lime proof paint usually after 7 days of the stucco application provided the masonry is dry. Contact paint manufacturer for application recommendations.



Precautions:

Air, mix and substrate temperatures should be between 40°F (4°C) and 90°F (32°C) and no rain in the forecast within 24 hours of application. For applications outside this range of temperatures and conditions, contact Sakrete Technical Service.

- Colder temperatures or higher humidity conditions will retard set times.
- Use only clean mixing container and tools.
- Do not over trowel.
- Do not overwater.
- Do not add any materials other than clean potable water or Sakrete Bonder and Fortifier. See Technical Data Sheet for mixing instructions.
- Protect from freezing for 24 hours.

NOTE: Proper application and installation of all Sakrete products are the responsibility of the end user.



Safety:

READ and UNDERSTAND the Safety Data Sheet (SDS) before using this product.
WARNING: Wear protective clothing and equipment. For emergency information, call CHEMTREC at 800-424-9300 or 703-527-3887 (outside USA).
KEEP OUT OF REACH OF CHILDREN.

Limited Product Warranty:

The manufacturer warrants that this product shall be of merchantable quality when used or applied in accordance with the manufacturer's instructions. This product is not warranted as suitable for any purpose other than the general purpose for which it is intended. This warranty runs for one (1) year from the dates the product is purchased. ANY IMPLIED WARRANTY OF MERCHANTABILITY OR FITNESS FOR A PARTICULAR PURPOSE ON THIS PRODUCT IS LIMITED TO THE DURATION OF THIS WARRANTY. Liability under this warranty is limited to replacement or defective products or, at the manufacturer's option, refund of the purchase price. CONSEQUENTIAL AND INCIDENTAL DAMAGES ARE NOT RECOVERABLE UNDER THIS WARRANTY.

SAKRETE® and the background design are registered trademarks of SAKRETE of North America LLC, Charlotte, NC 28217 • ©2006. SAKRETE® is manufactured under license from SAKRETE of North America LLC.

For current and complete product information, contact SAKRETE Technical Services toll-free at 866-725-7383 or visit Sakrete.com.



Sakrete Mortar/Stucco Mix Type S (Gray/White); Sakrete Surface Bonding Cement (Gray/White); Sakrete Non-Shrink Construction Grout; Sakrete Fast Setting Concrete Mix; Sakrete Stone Veneer Mortar; Sakrete Mortar Mix Type N; Sakrete Masonry Coating
Safety Data Sheet

according to the Hazard Communication Standard (CFR29 1910.1200) HazCom 2012.

Date of issue: 01/20/2014

Revision date: 02/24/2016

Version: 1.1

SECTION 1: Identification of the substance/mixture and of the company/undertaking

1.1. Product identifier

Product form : Mixture
Product name & code : Sakrete Mortar/Stucco Mix Type S
Sakrete Surface Bonding Cement
Sakrete Non-Shrink Construction Grout
Sakrete Fast Setting Concrete Mix
Sakrete Stone Veneer Mortar
Sakrete Mortar Mix Type N
Sakrete Masonry Coating

1.2. Relevant identified uses of the substance or mixture and uses advised against

Use of the substance/mixture : Various.

1.3. Details of the supplier of the safety data sheet

Sakrete of North America
625 Griffith Rd., Ste 100
28217 Charlotte, NC - USA
T 866-725-7383

1.4. Emergency telephone number

Emergency number : CHEMTREC (800) 424-9300
CHEMTREC International +1 (703) 527-3887 24 hr

SECTION 2: Hazards identification

2.1. Classification of the substance or mixture

GHS-US classification

Acute toxicity 4 (Oral)
Skin Irritation 2
Serious Eye Damage 1
Skin Sensitization 1
Carcinogenicity 1A
Specific Target Organ Toxicity After Single Exposure 3
Specific Target Organ Toxicity After Repeated Exposure 1

2.2. Label elements

GHS-US labelling

Hazard pictograms (GHS-US)



Signal word (GHS-US) : Danger

Hazard statements (GHS-US) : Harmful if swallowed. Causes skin irritation. Causes serious eye damage. May cause an allergic skin reaction. May cause cancer. May cause respiratory irritation. Causes damage to lungs through prolonged or repeated exposure.

Precautionary statements (GHS-US) : Wash hands thoroughly after handling. Do not eat, drink or smoke when using this product. Contaminated work clothing must not be allowed out of the workplace. Obtain special instructions before use. Do not handle until all safety precautions have been read and understood. Wear protective gloves/protective clothing/eye protection/face protection. Use only outdoors or in a well-ventilated area. Do not breathe dust. If exposed or concerned: Get medical advice/attention. If swallowed: Immediately call a poison center/doctor. Rinse mouth. If on skin: Wash with plenty of water. Take off contaminated clothing and wash it before reuse. If skin irritation or rash occurs: Get medical advice/attention. If in eyes: Rinse cautiously with water for several minutes. Remove contact lenses, if present and easy to do. Continue rinsing. Immediately call a poison center/doctor. If inhaled: Remove person to fresh air and keep comfortable for breathing. Call a poison center/doctor if you feel unwell. Store locked up. Store in a well-ventilated place. Keep container tightly closed. Dispose of contents and container in accordance with all local, regional, national and international regulations.

2.3. Other hazards

Other hazards not contributing to the classification : Not applicable.

Sakrete Mortar/Stucco Mix Type S (Gray/White); Sakrete Surface Bonding Cement (Gray/White); Sakrete Non-Shrink Construction Grout; Sakrete Fast Setting Concrete Mix; Sakrete Stone Veneer Mortar; Sakrete Mortar Mix Type N; Sakrete Masonry Coating
Safety Data Sheet

according to the Hazard Communication Standard (CFR29 1910.1200) HazCom 2012.

2.4. Unknown acute toxicity (GHS US)

Sakrete Masonry Coating: 34% of the mixture consists of ingredient(s) of unknown acute toxicity.
Sakrete Surface Bonding Cement (Gray/White): 25% of the mixture consists of ingredient(s) of unknown acute toxicity.
Sakrete Non-Shrink Construction Grout: 24% of the mixture consists of ingredient(s) of unknown acute toxicity.
Sakrete Stone Veneer Mortar: 18% of the mixture consists of ingredient(s) of unknown acute toxicity.
Sakrete Mortar-Stucco Mix Type S (Gray): 14% of the mixture consists of ingredient(s) of unknown acute toxicity.
Sakrete Mortar-Stucco Mix Type S (White): 12% of the mixture consists of ingredient(s) of unknown acute toxicity.
Sakrete Mortar Mix Type N: 13% of the mixture consists of ingredient(s) of unknown acute toxicity.
Sakrete Fast Setting Concrete Mix: 9% of the mixture consists of ingredient(s) of unknown acute toxicity.

SECTION 3: Composition/information on ingredients

3.1. Substances

Not applicable.

3.2. Mixture

Name	Product identifier	%	GHS-US classification
Quartz	(CAS No) 14808-60-7	30 - 85	Acute Tox. 4 (Oral), H302 Carc. 1A, H350 STOT RE 1, H372
Cement, portland, chemicals	(CAS No) 65997-15-1	5 - 55	Skin Irrit. 2, H315 Eye Dam. 1, H318 Skin Sens. 1, H317 STOT SE 3, H335
Limestone	(CAS No) 1317-65-3	0.5 - 17	Not classified
Calcium magnesium hydroxide (CaMg(OH)4)	(CAS No) 39445-23-3	1 - 5 ¹	Skin Irrit. 2, H315 Eye Dam. 1, H318 STOT SE 3, H335
Calcium magnesium hydroxide oxide (CaMg(OH)2O)	(CAS No) 58398-71-3	1 - 5 ¹	Not classified
Gypsum (Ca(SO4)2H2O)	(CAS No) 13397-24-5	0.5 - 5	Not classified
Calcium hydroxide	(CAS No) 1305-62-0	0.5 - 5 ¹	Skin Corr. 1B, H314 Eye Dam. 1, H318
Calcium sulfate	(CAS No) 7778-18-9	0.5 - 5	Not classified
Calcium oxide	(CAS No) 1305-78-8	0.5 - 2	Acute Tox. 4 (Oral), H302 Skin Irrit. 2, H315 Eye Dam. 1, H318 STOT SE 3, H335
Cement, alumina, chemicals	(CAS No) 65997-16-2	1 - 5 ²	Skin Irrit. 2, H315 Eye Dam. 1, H318
¹ Sakrete Mortar/Stucco Mix Type S (White); Sakrete Masonry Coating ² Sakrete Fast Setting Concrete Mix; Sakrete Non-Shrink Construction Grout			
The exact percentage (concentration) of composition has been withheld as a trade secret in accordance with paragraph (i) of §1910.1200.			

SECTION 4: First aid measures

4.1. Description of first aid measures

- First-aid measures after inhalation : If breathing is difficult, remove victim to fresh air and keep at rest in a position comfortable for breathing. Get medical advice/attention if you feel unwell.
- First-aid measures after skin contact : In case of contact, immediately flush skin with plenty of water. Remove contaminated clothing and shoes. Wash clothing before reuse. Call a physician if irritation develops and persists.
- First-aid measures after eye contact : In case of contact, immediately flush eyes with plenty of water for at least 15 minutes. If easy to do, remove contact lenses, if worn. Get medical attention immediately.
- First-aid measures after ingestion : If swallowed, do NOT induce vomiting unless directed to do so by medical personnel. Never give anything by mouth to an unconscious person. Immediately call a POISON CENTER or doctor/physician.

4.2. Most important symptoms and effects, both acute and delayed

- Symptoms/injuries after inhalation : May cause respiratory tract irritation.
- Symptoms/injuries after skin contact : Causes skin irritation. May cause burns in the presence of moisture. Skin contact during hydration may slowly develop sufficient heat that may cause severe burns possibly resulting in permanent injury. Do not allow product to harden around any body part or allow continuous, prolonged contact with skin. Handling can cause dry skin. May cause sensitization by skin contact.
- Symptoms/injuries after eye contact : Causes serious eye damage. May cause burns in the presence of moisture. Symptoms may include discomfort or pain, excess blinking and tear production, with possible redness and swelling.
- Symptoms/injuries after ingestion : Harmful if swallowed. May cause stomach distress, nausea or vomiting.

4.3. Indication of any immediate medical attention and special treatment needed

Symptoms may not appear immediately. In case of accident or if you feel unwell, seek medical advice immediately (show the label or SDS where possible).

Sakrete Mortar/Stucco Mix Type S (Gray/White); Sakrete Surface Bonding Cement (Gray/White); Sakrete Non-Shrink Construction Grout; Sakrete Fast Setting Concrete Mix; Sakrete Stone Veneer Mortar; Sakrete Mortar Mix Type N; Sakrete Masonry Coating
Safety Data Sheet

according to the Hazard Communication Standard (CFR29 1910.1200) HazCom 2012.

SECTION 5: Firefighting measures

5.1. Extinguishing media

Suitable extinguishing media : Treat for surrounding material.
 Unsuitable extinguishing media : Not available.

5.2. Special hazards arising from the substance or mixture

Fire hazard : Products of combustion may include, and are not limited to: oxides of carbon.

5.3. Advice for firefighters

Firefighting instructions : Keep upwind of fire. Wear full fire fighting turn-out gear (full Bunker gear) and respiratory protection (SCBA).

SECTION 6: Accidental release measures

6.1. Personal precautions, protective equipment and emergency procedures

General measures : Use personal protection recommended in Section 8. Isolate the hazard area and deny entry to unnecessary and unprotected personnel.

6.2. Methods and material for containment and cleaning up

For containment : Contain spill, then place in a suitable container. Do not flush to sewer or allow to enter waterways. Use appropriate Personal Protective Equipment (PPE).

Methods for cleaning up : Vacuum or sweep material and place in a disposal container.

6.3. Reference to other sections

No additional information available.

SECTION 7: Handling and storage

7.1. Precautions for safe handling

Precautions for safe handling : Avoid contact with skin and eyes. Avoid generating and breathing dust. Do not swallow. Good housekeeping is important to prevent accumulation of dust. The use of compressed air for cleaning clothing, equipment, etc, is not recommended. Handle and open container with care. When using do not eat, drink or smoke.

Hygiene measures : Launder contaminated clothing before reuse. Wash hands before eating, drinking, or smoking.

7.2. Conditions for safe storage, including any incompatibilities

Storage conditions : Keep out of the reach of children. Store in dust-tight, dry, labelled containers. Keep container tightly closed when not in use. Avoid any dust buildup by frequent cleaning and suitable construction of the storage area. Do not store in an area equipped with emergency water sprinklers.

7.3. Specific end use(s)

No additional information available.

SECTION 8: Exposure controls/personal protection

8.1. Control parameters

Quartz (14808-60-7)		
USA ACGIH	ACGIH TWA (mg/m ³)	0.025 mg/m ³
USA OSHA	OSHA PEL (TWA) (mg/m ³)	(30)/(%SiO ₂ + 2) mg/m ³ TWA, total dust (250)/(%SiO ₂ + 5) mppcf TWA, respirable fraction (10)/(%SiO ₂ + 2) mg/m ³ TWA, respirable fraction
Cement, portland, chemicals (65997-15-1)		
USA ACGIH	ACGIH TWA (mg/m ³)	1 mg/m ³
USA OSHA	OSHA PEL (TWA) (mg/m ³)	5 mg/m ³
Calcium sulfate (7778-18-9)		
USA ACGIH	ACGIH TWA (mg/m ³)	10 mg/m ³
USA OSHA	OSHA PEL (TWA) (mg/m ³)	5 mg/m ³
Gypsum (Ca(SO ₄).2H ₂ O) (13397-24-5)		
USA ACGIH	ACGIH TWA (mg/m ³)	10 mg/m ³
USA OSHA	OSHA PEL (TWA) (mg/m ³)	5 mg/m ³
Limestone (1317-65-3)		
USA ACGIH	ACGIH TWA (mg/m ³)	10 mg/m ³

Sakrete Mortar/Stucco Mix Type S (Gray/White); Sakrete Surface Bonding Cement (Gray/White); Sakrete Non-Shrink Construction Grout; Sakrete Fast Setting Concrete Mix; Sakrete Stone Veneer Mortar; Sakrete Mortar Mix Type N; Sakrete Masonry Coating
Safety Data Sheet

according to the Hazard Communication Standard (CFR29 1910.1200) HazCom 2012.

Limestone (1317-65-3)		
USA OSHA	OSHA PEL (TWA) (mg/m ³)	5 mg/m ³
Calcium oxide (1305-78-8)		
USA ACGIH	ACGIH TWA (mg/m ³)	2 mg/m ³
USA OSHA	OSHA PEL (TWA) (mg/m ³)	5 mg/m ³
Calcium hydroxide (1305-62-0)		
USA ACGIH	ACGIH TWA (mg/m ³)	5 mg/m ³
USA OSHA	OSHA PEL (TWA) (mg/m ³)	5 mg/m ³

8.2. Exposure controls

Appropriate engineering controls	: Use ventilation adequate to keep exposures (airborne levels of dust, fume, vapor, etc.) below recommended exposure limits.
Hand protection	: Wear suitable waterproof gloves.
Eye protection	: Wear approved eye protection (properly fitted dust- or splash-proof chemical safety goggles) and face protection (face shield).
Skin and body protection	: Wear suitable waterproof protective clothing.
Respiratory protection	: A NIOSH approved dust mask or filtering facepiece is recommended in poorly ventilated areas or when permissible exposure limits may be exceeded. Respirators should be selected by and used under the direction of a trained health and safety professional following requirements found in OSHA's respirator standard (29 CFR 1910.134) and ANSI's standard for respiratory protection (Z88.2).
Other information	: Handle according to established industrial hygiene and safety practices. Do not eat, smoke or drink where material is handled, processed or stored. Wash hands carefully before eating or smoking.

SECTION 9: Physical and chemical properties

9.1. Information on basic physical and chemical properties

Physical state	: Solid
Appearance	: Powder.
Colour	: Various.
Odour	: Characteristic.
Odour threshold	: No data available.
pH	: 10 - 12
Relative evaporation rate (butylacetate=1)	: No data available.
Melting point	: No data available.
Freezing point	: No data available.
Boiling point	: No data available.
Flash point	: No data available.
Self ignition temperature	: No data available.
Decomposition temperature	: No data available.
Flammability (solid, gas)	: Not Flammable.
Vapour pressure	: No data available.
Relative vapour density at 20 °C	: No data available.
Relative density	: No data available.
Solubility	: No data available.
Log Pow	: No data available.
Log Kow	: No data available.
Viscosity, kinematic	: No data available.
Viscosity, dynamic	: No data available.
Explosive properties	: No data available.
Oxidising properties	: No data available.
Explosive limits	: No data available.

9.2. Other information

VOC content	: 0%, Not applicable; 0 wt, Not applicable.
-------------	---

Sakrete Mortar/Stucco Mix Type S (Gray/White); Sakrete Surface Bonding Cement (Gray/White); Sakrete Non-Shrink Construction Grout; Sakrete Fast Setting Concrete Mix; Sakrete Stone Veneer Mortar; Sakrete Mortar Mix Type N; Sakrete Masonry Coating
Safety Data Sheet

according to the Hazard Communication Standard (CFR29 1910.1200) HazCom 2012.

SECTION 10: Stability and reactivity

10.1. Reactivity

No dangerous reaction known under conditions of normal use.

10.2. Chemical stability

Stable under normal storage conditions. Keep dry in storage.

10.3. Possibility of hazardous reactions

No dangerous reaction known under conditions of normal use.

10.4. Conditions to avoid

Incompatible materials. Moisture.

10.5. Incompatible materials

Wet cement is alkaline and incompatible with acid, ammonium salts and aluminum metal.

10.6. Hazardous decomposition products

May include, and are not limited to: oxides of carbon.

SECTION 11: Toxicological information

11.1. Information on toxicological effects

Acute toxicity : Harmful if swallowed.

Quartz (14808-60-7)	
LD50 oral rat	500 mg/kg
Calcium sulfate (7778-18-9)	
LD50 oral rat	> 3000 mg/kg
Calcium oxide (1305-78-8)	
LD50 oral rat	500 mg/kg
Calcium hydroxide (1305-62-0)	
LD50 oral rat	7340 mg/kg
Sakrete Mortar/Stucco Mix Type S (Gray/White); Sakrete Surface Bonding Cement (Gray/White); Sakrete Non-Shrink Construction Grout; Sakrete Fast Setting Concrete Mix ; Sakrete Stone Veneer Mortar; Sakrete Mortar Mix Type N; Sakrete Masonry Coating	
ATE (oral)	520 - 880 mg/kg, rat
ATE (dermal)	No data available.
ATE (inhalation)	No data available.

Skin corrosion/irritation : Causes skin irritation.
 Serious eye damage/irritation : Causes serious eye damage.
 Respiratory or skin sensitisation : May cause an allergic skin reaction.
 Germ cell mutagenicity : Based on available data, the classification criteria are not met.
 Carcinogenicity : May cause cancer.

Quartz (14808-60-7)	
IARC group	1
National Toxicity Program (NTP) Status	2

Reproductive toxicity : Based on available data, the classification criteria are not met.
 Specific target organ toxicity (single exposure) : May cause respiratory irritation.
 Specific target organ toxicity (repeated exposure) : Causes damage to lungs through prolonged or repeated exposure. (Respirable crystalline silica in the form of quartz or cristobalite from occupational sources is listed by the International Agency for Research on Cancer (IARC) and National Toxicology Program (NTP) as a lung carcinogen. Prolonged exposure to respirable crystalline silica has been known to cause silicosis, a lung disease, which may be disabling. While there may be a factor of individual susceptibility to a given exposure to respirable silica dust, the risk of contracting silicosis and the severity of the disease is clearly related to the amount of dust exposure and the length of time (usually years) of exposure.)
 Aspiration hazard : Based on available data, the classification criteria are not met.
 Symptoms/injuries after inhalation : May cause respiratory tract irritation.
 Symptoms/injuries after skin contact : Causes skin irritation. May cause burns in the presence of moisture. Skin contact during hydration may slowly develop sufficient heat that may cause severe burns possibly resulting in permanent injury. Do not allow product to harden around any body part or allow continuous, prolonged contact with skin. Handling can cause dry skin. May cause sensitization by skin contact.

Sakrete Mortar/Stucco Mix Type S (Gray/White); Sakrete Surface Bonding Cement (Gray/White); Sakrete Non-Shrink Construction Grout; Sakrete Fast Setting Concrete Mix; Sakrete Stone Veneer Mortar; Sakrete Mortar Mix Type N; Sakrete Masonry Coating
Safety Data Sheet

according to the Hazard Communication Standard (CFR29 1910.1200) HazCom 2012.

Symptoms/injuries after eye contact	: Causes serious eye damage. May cause burns in the presence of moisture. Symptoms may include discomfort or pain, excess blinking and tear production, with possible redness and swelling.
Symptoms/injuries after ingestion	: Harmful if swallowed. May cause stomach distress, nausea or vomiting.
Other information	: Likely routes of exposure: ingestion, inhalation, skin and eye.

SECTION 12: Ecological information

12.1. Toxicity

Ecology - general : No ecological consideration when used according to directions. Normal dilution of this product to drains, sewers, septic systems and treatment plants is not considered environmentally harmful.

Calcium sulfate (7778-18-9)	
LC50 fishes 1	2980 mg/l (96 h: Lepomis macrochirus [static])
LC50 fish 2	> 1970 mg/l (96 h: Pimephales promelas [static])
Calcium oxide (1305-78-8)	
LC50 fishes 1	1070 mg/l (96 h: Cyprinus carpio [static])

12.2. Persistence and degradability

Sakrete Mortar/Stucco Mix Type S (Gray/White); Sakrete Surface Bonding Cement (Gray/White); Sakrete Non-Shrink Construction Grout; Sakrete Fast Setting Concrete Mix ; Sakrete Stone Veneer Mortar; Sakrete Mortar Mix Type N; Sakrete Masonry Coating	
Persistence and degradability	No data available.

12.3. Bioaccumulative potential

Sakrete Mortar/Stucco Mix Type S (Gray/White); Sakrete Surface Bonding Cement (Gray/White); Sakrete Non-Shrink Construction Grout; Sakrete Fast Setting Concrete Mix ; Sakrete Stone Veneer Mortar; Sakrete Mortar Mix Type N; Sakrete Masonry Coating	
Bioaccumulative potential	No data available.

Calcium oxide (1305-78-8)	
BCF fish 1	(no bioaccumulation)
Calcium hydroxide (1305-62-0)	
BCF fish 1	(no bioaccumulation)

12.4. Mobility in soil

Sakrete Mortar/Stucco Mix Type S (Gray/White); Sakrete Surface Bonding Cement (Gray/White); Sakrete Non-Shrink Construction Grout; Sakrete Fast Setting Concrete Mix ; Sakrete Stone Veneer Mortar; Sakrete Mortar Mix Type N; Sakrete Masonry Coating	
Ecology - soil	No data available.

12.5. Other adverse effects

Other adverse effects : No data available.

SECTION 13: Disposal considerations

13.1. Waste treatment methods

Waste disposal recommendations : This material must be disposed of in accordance with all local, state, provincial, and federal regulations.

SECTION 14: Transport information

In accordance with DOT.

14.1. UN number

Not applicable.

14.2. UN proper shipping name

Not applicable.

14.3. Additional information

Other information : No supplementary information available.

Sakrete Mortar/Stucco Mix Type S (Gray/White); Sakrete Surface Bonding Cement (Gray/White); Sakrete Non-Shrink Construction Grout; Sakrete Fast Setting Concrete Mix; Sakrete Stone Veneer Mortar; Sakrete Mortar Mix Type N; Sakrete Masonry Coating
Safety Data Sheet

according to the Hazard Communication Standard (CFR29 1910.1200) HazCom 2012.

SECTION 15: Regulatory information

15.1. US Federal regulations

Quartz (14808-60-7)
Listed on the United States TSCA (Toxic Substances Control Act) inventory
Cement, portland, chemicals (65997-15-1)
Listed on the United States TSCA (Toxic Substances Control Act) inventory
Calcium sulfate (7778-18-9)
Listed on the United States TSCA (Toxic Substances Control Act) inventory
Limestone (1317-65-3)
Listed on the United States TSCA (Toxic Substances Control Act) inventory
Calcium oxide (1305-78-8)
Listed on the United States TSCA (Toxic Substances Control Act) inventory
Cement, alumina, chemicals (65997-16-2)
Listed on the United States TSCA (Toxic Substances Control Act) inventory
Calcium magnesium hydroxide (CaMg(OH)4) (39445-23-3)
Listed on the United States TSCA (Toxic Substances Control Act) inventory
Calcium magnesium hydroxide oxide (CaMg(OH)2O) (58398-71-3)
Listed on the United States TSCA (Toxic Substances Control Act) inventory
Calcium hydroxide (1305-62-0)
Listed on the United States TSCA (Toxic Substances Control Act) inventory

15.2. US State regulations

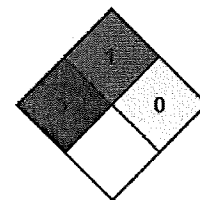
Sakrete Mortar/Stucco Mix Type S (Gray/White); Sakrete Surface Bonding Cement (Gray/White); Sakrete Non-Shrink Construction Grout; Sakrete Fast Setting Concrete Mix; Sakrete Stone Veneer Mortar; Sakrete Mortar Mix Type N; Sakrete Masonry Coating	
State or local regulations	This product contains Crystalline Silica, Quartz and may also contain other chemicals known to the State of California to cause cancer, birth defects or other reproductive harm.

SOURCE AGENCY CARCINOGEN CLASSIFICATIONS:

IARC (I)	International Agency for Research on Cancer.
	1 - Carcinogenic to humans; 2A - Probably carcinogenic to humans; 2B - Possibly carcinogenic to humans; 3 - Not classifiable; 4 - Probably not carcinogenic to humans.
NTP (N)	National Toxicology Program.
	1 - Evidence of Carcinogenicity; 2 - Known Human Carcinogens; 3 - Reasonably anticipated to be Human Carcinogen; 4 - Substances delisted from report on Carcinogens; 5 - Twelfth Report - Items under consideration.

SECTION 16: Other information

Data sources	: SDS prepared pursuant to the Hazard Communication Standard (CFR29 1910.1200) HazCom 2012.
Date of Issue:	01/20/2014
Revision Date:	05/29/2015
Version:	1.1
NFPA health hazard	: 3 - Short exposure could cause serious temporary or residual injury even though prompt medical attention was given.
NFPA fire hazard	: 1 - Must be preheated before ignition can occur.
NFPA reactivity	: 0 - Normally stable, even under fire exposure conditions, and are not reactive with water.



This information is based on our current knowledge and is intended to describe the product for the purposes of health, safety and environmental requirements only. It should not therefore be construed as guaranteeing any specific property of the product