

DATE: 5/18/2018
BID NO.: 50-00123126

INVITATION TO BID
THIS IS NOT AN ORDER

Page: 4

JEFFERSON PARISH

PURCHASING DEPARTMENT
P.O. BOX 9
GRETN, LA. 70054-0009
504-364-2678

VENDOR: BASIC SUPPLY, LLC

BUYER: DABRAHAM

As per LSA-RS 47:301 et seq., all governmental bodies are excluded from payment of sales taxes to any Louisiana taxing body. Quotations shall be based on F.O.B. Agency warehouse or jobsite, anywhere within the Parish as designated by the Purchasing Department.

JEFFERSON PARISH reserves the right to cancel all or any part of an order if not shipped promptly. No charges will be allowed for parking or cartage unless specified in quotation. The order must not be filled at a higher price than quoted. JEFFERSON PARISH reserves the right to cancel at any time and for any reason by issuing a THIRTY (30) day written notice to the contractor.

JEFFERSON PARISH is expecting all products to be new and all work to be done in workman-like manner, according to standard practices. Any deviations or alteration from the specifications must be indicated on the bid form for each item and upon request, product data for same must be submitted by the time specified by the Purchasing Department.

DELIVERY: FOB JEFFERSON PARISH

INDICATE DELIVERY DATE ON EQUIPMENT AND SUPPLIES

2-3 WEEKS

INDICATE STARTING TIME (IN DAYS) FOR CONSTRUCTION WORK

INDICATE COMPLETION TIME (IN DAYS) FOR CONSTRUCTION WORK

In the event that addenda are issued with this bid, bidders MUST acknowledge all addenda on the bid form. Bidder must acknowledge receipt of an addendum on the bid form as indicated. Failure to acknowledge any addendum on the bid form will result in bid rejection.

Acknowledge Receipt of Addenda: NUMBER: _____

NUMBER: _____

NUMBER: _____

NUMBER: _____

LOUISIANA CONTRACTOR'S LICENSE NO.: (if applicable) _____

*** ALL BIDDERS MUST COMPLETE SECTION BELOW ***	
FIRM NAME: BASIC SUPPLY, LLC	
SIGNATURE: (Must be signed here)	TITLE: MANAGER
PRINT OR TYPE NAME: JOHN ATKINSON	
ADDRESS: PO BOX 63066	
CITY, STATE: LAFAYTTE, LA	ZIP: 70596
TELEPHONE: () 337-769-0122	FAX: () 337-247-7699
EMAIL ADDRESS: charlotte@basicsupply.com	

TOTAL PRICE OF ALL BID ITEMS: \$ 2894.00

INVITATION TO BID FROM JEFFERSON PARISH - continued

BID NO.: 50-00123126

SEALED BID

ITEM NUMBER	QUANTITY	U/M	DESCRIPTION OF ARTICLES	UNIT PRICE QUOTED	TOTALS
1	5.00	EA	A purchase of industrial supplies for the Department of Sewerage 0001 - Applicator gun, EPX Plus II, for use with 50ml duo-pak Scotch DP100 Epoxy Grainger no. 4TY44 (032992A)	NO BID	
2	12.00	EA	0002 - Belt, no. B-58, Dayco super blue ribbon 6525788 (0040600)	6.20	74.40
3	20.00	EA	0003 - Belt, Gates Truflex no. 5L390 (0041360) 4478749	4.11	82.20
4	15.00	EA	0004 - Gauge, pressure, 0-60 p.s.i., 2-1/2 in face, 1/4 in npt bottom mount, liq-filled stainless steel case, Wika No. 9251626 (0695130) VALLE MOD 54	31.00	465.00
5	18.00	EA	0005 - Bushing hex, 2 inch x 1-1/2 inch, grade no. 316 stainless steel, 150 lb threaded fittings, Merit Brand or equal (029060A) 63531	16.80	302.40
6	1,500.00	EA	0006 - Washer, flat, 3/8 in, grade 316 stainless steel (0411320)	NO BID	NO BID
7	600.00	EA	0007 - Nut, hex, 5/8 in - 11, grade no. 316 stainless steel (0412350)	NO BID	NO BID
8	50.00	EA	0008 - Bolt, hex head, 7/8 in - 9 x 2-1/4 in long, grade 316 stainless steel (0413110)	NO BID	NO BID
9	120.00	EA	0009 - Padlock, combination, commercial, Master Lock brand no. 175DLH, Grainger No. 1U173 (0580030)	14.50	1740.00

INVITATION TO BID FROM JEFFERSON PARISH - continued

BID NO.: 50-00123126

SEALED BID

ITEM NUMBER	QUANTITY	U/M	DESCRIPTION OF ARTICLES	UNIT PRICE QUOTED	TOTALS
10	10.00	EA	0010 - Valve, safety, air compressor, brass, soft seat, 150 lb, Control Devices no. ST25-1A150, Grainger no. 5A709 (0621460)	23.00	230.00
11	5.00	EA	0011 - Coupling, Lovejoy no. L-110, blank, no bore (0632470)	NO BID	NO BID
12	24.00	EA	0012 - Coupling, PVC, schedule 80, 1-1/4 in, female socket x female socket, electrical conduit is not acceptable. (0690260)	NO BID	NO BID
13	60.00	EA	0013 - Coupling, PVC, schedule 80, 1-1/2 in, female socket x female socket, (electrical conduit fittings are not acceptable) (0690280)	NO BID	NO BID

6525778

PIX B58/5L610 Cut Edge V-Belt, 58 In Inside Circumference,
21/32 In W Top, Reinforced Rubber

Used for light-duty applications, such as those that transmit
less than 1 hp.

PRODUCT DETAILS

Depth: 13/32 In

Inside Circumference: 58 In

Material: Reinforced Rubber

Outside Circumference: 61 In

Section: 5L

Standards: RMA Specified, IP-23

Temperature Rating: -35 TO 100 Deg C

Thickness: 3/8 In

Top Width: 21/32 In

Type: Cut Edge, Fractional Horsepower, Molded Cog

Usage: For Light Duty Motors Utilizing Small Diameter

Pulleys, Lawn And Garden, Home, Farm Or Shop

Applications

Series: B

FEATURES

Used For Light-Duty Applications, Such As Those That
Transmit Less Than 1 Hp



4478749

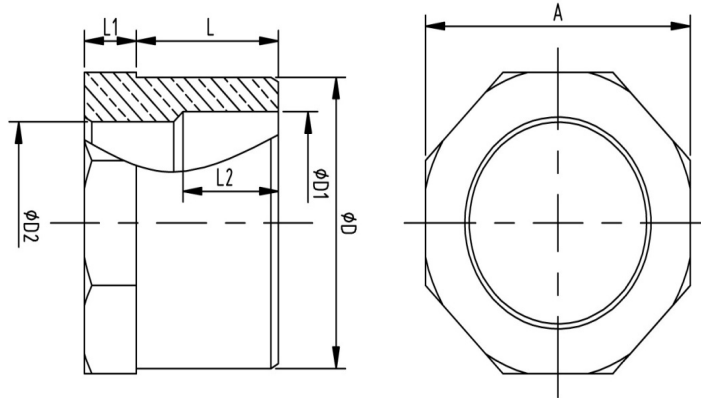
PIX B36/5L390 Cut Edge V-Belt, 36 In Inside
Circumference, 21/32 In W Top, Reinforced
Rubber

Used for light-duty applications, such as those that
transmit less than 1 hp.

PIX B36/5L390 Cut Edge V-Belt, 36 In Inside
Circumference, 21/32 In W Top, Reinforced
Rubber

Used for light-duty applications, such as those that
transmit less than 1 hp.





HEX BUSHING

Material		SIZE	DIMENSIONS							
304 S.S.	316 S.S.		A	D	D1	D2	L	L1	L2	SW
62501	63501	3/8" × 1/8"	0.75	0.67	0.46	0.35	0.47	0.24	0.33	0.31
62504	63504	1/2" × 1/4"	0.91	0.85	0.61	0.45	0.59	0.26	0.50	0.31
62507	63507	3/4" × 1/4"	1.09	1.07	0.81	0.45	0.72	0.28	0.67	0.31
62508	63508	3/4" × 3/8"	1.09	1.06	0.80	0.57	0.72	0.28	0.64	0.31
62509	63509	3/4" × 1/2"	1.10	1.08	0.81	0.72	0.72	0.28	0.63	0.31
62510	63510	1" × 1/4"	1.37	1.34	1.02	0.45	0.73	0.28	0.66	0.31
62511	63511	1" × 3/8"	1.38	1.34	1.02	0.57	0.74	0.28	0.67	0.31
62512	63512	1" × 1/2"	1.37	1.34	1.02	0.72	0.74	0.28	0.53	0.31
62513	63513	1" × 3/4"	1.39	1.34	1.02	0.93	0.74	0.27	0.50	0.31
		1 1/4" × 1/4"	1.69	1.67	1.36	0.44	0.85	0.30	1.00	0.31
62516	63516	1 1/4" × 1/2"	1.73	1.70	1.36	0.72	0.82	0.32	0.67	0.31
62518	63518	1 1/4" × 1"	1.73	1.69	1.36	1.17	0.81	0.33	0.56	0.31
		1 1/2" × 1/4"	1.93	1.91	1.59	0.43	0.87	0.33	1.05	0.31
		1 1/2" × 3/8"	1.94	1.91	1.59	0.57	0.87	0.32	0.99	0.31
62521	63521	1 1/2" × 1/2"	1.93	1.91	1.58	0.71	0.87	0.32	0.99	0.31
62532	63532	1 1/2" × 1"	1.98	1.93	1.58	1.16	0.85	0.31	0.58	0.31
62524	63524	1 1/2" × 1 1/4"	1.98	1.93	1.58	1.52	0.85	0.31	0.53	0.31
		2" × 1/4"	2.40	2.36	2.04	0.44	1.02	0.32	1.16	0.31
		2" × 3/8"	2.41	2.37	2.03	0.58	1.14	0.33	1.12	0.31
62527	63527	2" × 1/2"	2.40	2.36	2.04	0.71	1.02	0.33	1.13	0.31
62528	63528	2" × 3/4"	2.40	2.36	2.04	0.92	1.10	0.32	1.10	0.31
62529	63529	2" × 1"	2.40	2.36	2.04	1.15	1.02	0.33	1.02	0.31
62530	63530	2" × 1 1/4"	2.44	2.40	2.02	1.51	1.02	0.36	0.72	0.31
62531	63531	2" × 1 1/2"	2.44	2.40	2.03	1.75	1.00	0.36	0.72	0.31

GAUGES



Model 54

All Stainless OEM

Gauges

(Single Scale)

STANDARD RANGES*

Standard Gauge Scales - PSI Only.

STANDARD DIAL RANGES	AVAILABILITY		GRADUATION	
	2-1/2"	4"	Major	Minor
0-30" VAC	✓	✓	5	.5
0-30 psi	✓	✓	5	.5
0-60 psi	✓	✓	10	1
0-100 psi	✓	✓	20	2
0-160 psi	✓	✓	20	2
0-200 psi	✓	✓	50	5
0-300 psi	✓	✓	50	5
0-400 psi	✓	✓	100	10
0-600 psi	✓	✓	100	10
0-1000 psi	✓	✓	200	20
0-1500 psi	✓	✓	200	20
0-2000 psi	✓	✓	500	50
0-3000 psi	✓	✓	500	50
0-5000 psi	✓	✓	1000	100
0-6000 psi	✓	✓	1000	100
0-10000 psi	✓	✓	2000	200

*Limited availability on some sizes and ranges

2 1/2" or 4" Case

Center Back or Bottom Mount

These gauges are designed for use with any medium not corrosive to stainless steel. Liquid-filled gauges reduce shock caused by pressure fluctuations or vibration.


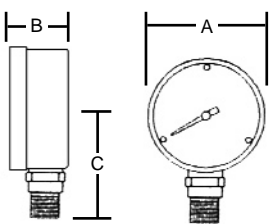

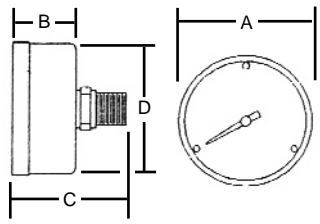

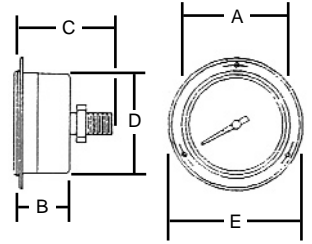

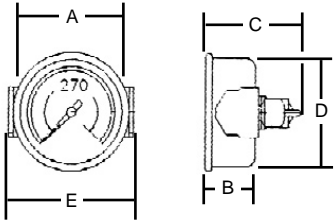
FEATURES

MOVEMENT:	Stainless Steel
BOURDON TUBE:	316 Stainless Steel
POINTER:	Black enameled aluminum
DIAL:	White aluminum
WINDOW:	Polycarbonate
CASE MATERIAL	304 Stainless steel
CONNECTION MATERIAL	316 Stainless steel
CONNECTION SIZE	1/4" MNPT Standard.
ACCURACY:	ASME/ANSI B40.1 Grade B (3-2-3%)

PRICING AND OPTIONS - (Stock)

2-1/2" CASE Call for Pricing
U-Clamp	2454-UC . . . Call for Pricing
Front Flange	2354-FF . . . Call for Pricing
4" CASE Call for Pricing
U-Clamp	4454-UC . . . Call for Pricing
Front Flange	4330/54-FF . Call for Pricing

CASE STYLES AND DIMENSIONS

BOTTOM MOUNT Style 1			SIZE	A	B	C	D	E
			2-1/2"	2.672"	1.109"	2.25"	2.460"	n/a
			4"	4.344"	1.828"	3.391"	3.970"	n/a
BACK MOUNT Style 2			SIZE	A	B	C	D	E
			2-1/2"	2.672"	1.109"	2.25"	2.460"	n/a
			4"	4.344"	1.828"	3.391"	3.970"	n/a
FRONT FLANGE Style 3			SIZE	A	B	C	D	E
			2-1/2"	2.672"	1.109"	2.25"	2.460"	3.343"
			4"	4.35"	1.91"	3.41"	3.970"	5.19"
PANEL MOUNT Style 4			SIZE	A	B	C	D	E
			2-1/2"	2.672"	1.109"	2.25"	2.460"	3.359"
			4"	n/a	n/a	n/a	n/a	n/a

ORDERING INFORMATION

To determine the ordering number, use the following information

Example - 4154GXX2000 = 4", 1/4" Btm Mt., All Stainless, Glycerin-filled, Stainless Case, 2000 PSI

4	1	50	G	X	X	2000	
1st Digit	2nd Digit	3rd & 4th Digits	5th Digit	6th Digit	7th Digit	Range	Suffix
Dial Size	Case Style	Model	Fill Material	Case Material	Wetted Parts	PSI	Options
2 = 2.5" 4 = 4"	1 = Bottom 2 = Back 3 = Front Flange 4 = Panel Mount	54 = Stainless	D = Dry G = Glycerin S = Silicone F = Florolube	X = Stainless	X = Stainless	SEE RANGE CHART	Custom Logo Color Dial Special Dial Etc.