

		Model Number:		GX3-AL-TF-213TC-6-B-D-3		
		MFG PN:		1086		
		List Price:				
All data shown at HIGH voltage setting				Format: STD 3 Phase		
Electrical Data				General Data		
Rated Motor Output Power		3.0	HP	Frame Size		213TC
Rated Motor Speed		1175	r/min 60Hz	Enclosure		TEFC
		975	r/min 50Hz	Mounting		Rigid/C-Flange
Rated Motor Voltage (3 Phase)		230/460	V/60Hz	NEMA Design		A
		190/380	V/50Hz	IP Rating		55
Rated Motor Current		8.58/4.29	A (In) @ 60Hz	Insulation Class		F
		10.1/5.05	A (In) @ 50Hz	Tropicalization		1
FL Current @ 208V		None	A (In) @ 60Hz	Duty		Cont. / S1
Service Factor		1.25	@ 60Hz	Cable Entry		1-NPT 1■
		1.25	@ 50Hz	Feet Removable		1
KVA Code		K	60Hz	Double Drilled		0
		J	50Hz	Frame Material		Cast Aluminum
Nominal Efficiency		89.5	% @ 60Hz	Shaft Material		1045
		88.1	% @ 50Hz	Coating		RAL
Nominal Power Factor		0.71	cosθ @ 60Hz			
Full Load Torque Ft-Lb		S		Mechanical Data		
Load Data	Trq Ft-Lb	Trq %FL	Current Amps	Bearing DE Side		6308ZZ
Locked Rotor				Bearing NDE Side		6208ZZ
Breakdown	20.22941209	154.0	-	Comp Ring (wavey washer)		None
Pull Up	21.7992	248.0	-	Weight		73.5 Lbs
Load Data	RPM	Eff %	Current Amps	Moment of Inertia		None kg.m3
125% of FL	3496.3	86.1	4.39	Site Conditions		
75% of FL	3541.2	86.43	2.79	Temp Rise @ Full Load °C		B @ 60Hz
50% of FL	3561.2	84.23	2.13	Ambient Temperature °C		40
No Load	1199.0	0	2.22	Altitude Above Sea Level (M)		1000
Brake Torque (N-M)		100.0	Loaded Torque Curves		None	
Brake Coil Voltage		None	P1 = Output Power (KW), S = Slip (% of Sync RPM), η = Efficiency (%), cosφ = Power Factor			

CT VFD Range																																					
Haz Loc Rating																																					
Options:																																					
UL File Number																																					
CSA File Number																																					
DOE File Number																																					
CE APPROVAL																																					
Wiring Diagram	NEMA-3-9-YY-Y																																				
<b>3 Phase - YY/Y - 9 Lead</b> 4,1 Blue / 5,2 White / 6,3 Org / 7 Yl / 8 Blk / 9 RD Cast Iron- 1,2,3 Top - 4,5,6,7,8,9 Bottom Aluminum - 4,5,6,8,9 Top - 1,2,3,7 Bottom																																					
<table border="1"> <tr> <th colspan="6">CONNECTIONS</th> </tr> <tr> <td>4</td><td>5</td><td>6</td> <td>4</td><td>5</td><td>6</td> </tr> <tr> <td>7</td><td>8</td><td>9</td> <td>7</td><td>8</td><td>9</td> </tr> <tr> <td>1</td><td>2</td><td>3</td> <td>1</td><td>2</td><td>3</td> </tr> <tr> <td>↑</td><td>↑</td><td>↑</td> <td>↑</td><td>↑</td><td>↑</td> </tr> <tr> <td colspan="3">LOW VOLTAGE</td> <td colspan="3">HIGH VOLTAGE</td> </tr> </table>		CONNECTIONS						4	5	6	4	5	6	7	8	9	7	8	9	1	2	3	1	2	3	↑	↑	↑	↑	↑	↑	LOW VOLTAGE			HIGH VOLTAGE		
CONNECTIONS																																					
4	5	6	4	5	6																																
7	8	9	7	8	9																																
1	2	3	1	2	3																																
↑	↑	↑	↑	↑	↑																																
LOW VOLTAGE			HIGH VOLTAGE																																		

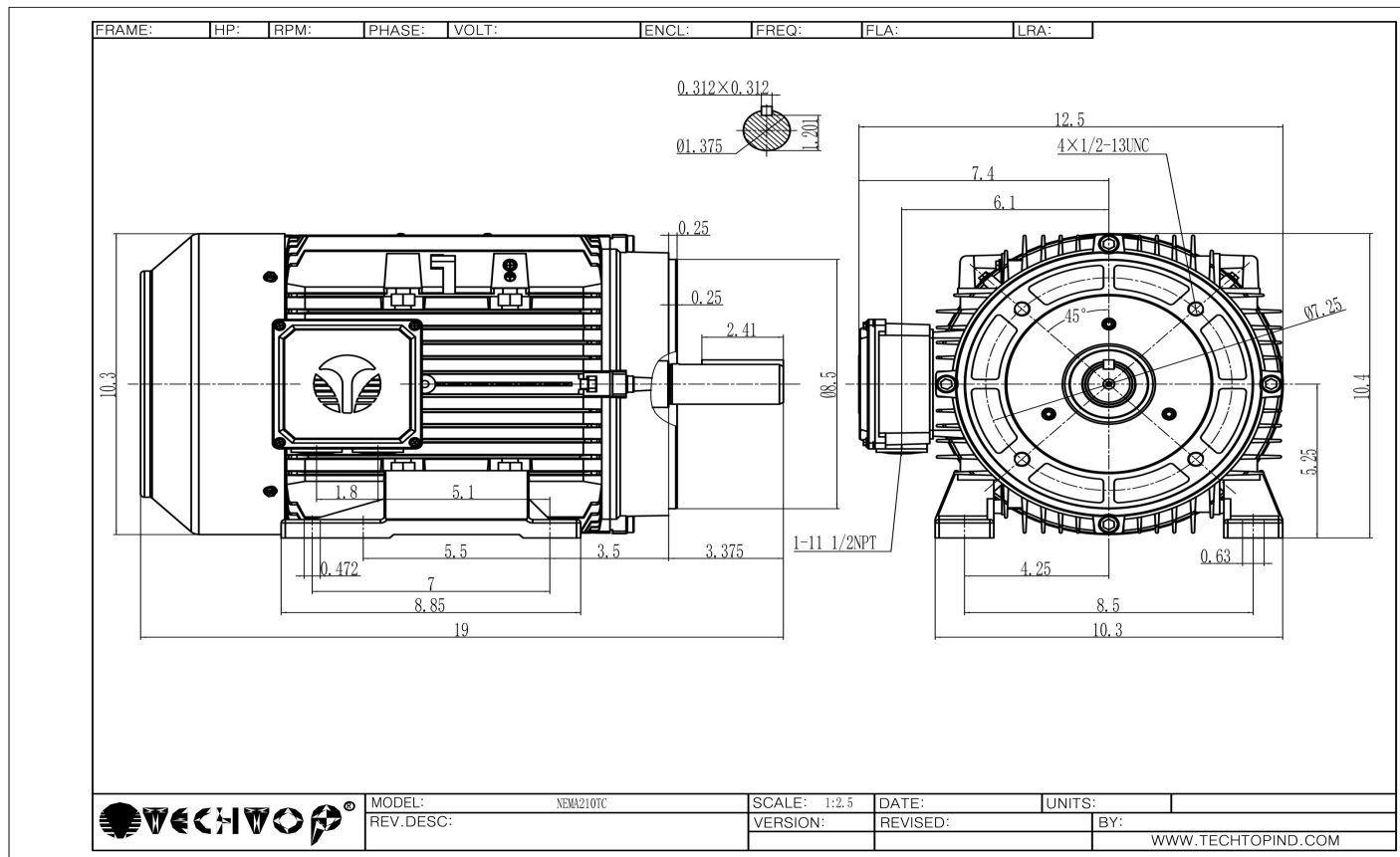
Techtop Industries -2815 Colonnades Court - Peachtree Corners, GA 30071 - Phone: (678) 436-5540



Model Number:	GX3-AL-TF-213TC-6-B-D-3
MFG PN:	
List Price:	1086

Dimensional Drawing (For Reference Only)

GX3-AL-TF-210TC-2D



Components

Item	Model	Description	List Price
C-Face Kit			

D-Flange Kit			
DE Endplate Kit			
NDE Endplate Kit			
Junction Box			
Cooling Fan Cover			
Cooling Fan			
Replacement Feet			
DE Bearing Retainer Kit			
NDE Bearing Retainer Kit			
Techtop Industries -2815 Colonnades Court - Peachtree Corners, GA 30071 - Phone: (678) 436-5540			