



Bid Number 50 – 00126978

**ONE YEAR CONTRACT FOR A SUPPLY OF DUCTILE IRON FITTINGS AND
ADAPTER KITS FOR PRICE BROTHERS PIPE FOR THE JEFFERSON PARISH
DEPARTMENT OF PUBLIC WORKS, WATERWORKS AND ALL JEFFERSON
PARISH AGENCIES AND MUNICIPALITIES**

JULY 11, 2019 AT 2:00 PM

ATTENTION VENDORS!!!

Please review all pages and respond accordingly, complying with all provisions
in the technical specifications and Jefferson Parish Instructions for Bidders and
General Terms and Conditions. All bids must be received in the Purchasing

Department by the bid due date and time.

**Jefferson Parish Purchasing Department
200 Derbigny Street
General Government Building, Suite 4400
Gretna, LA 70053
Donna M Evans
DMEvans@Jeffparish.net
504-364-2691**

DATE: 6/26/2019

BID NO.: 50-00126978

INVITATION TO BID
THIS IS NOT AN ORDER

Page: 1

JEFFERSON PARISH

PURCHASING DEPARTMENT
P.O. BOX 9
GRETN, LA. 70054-0009
504-364-2678

BUYER: DMEVANS@jeffparish.net

BIDS WILL BE RECEIVED IN THE WEST BANK PURCHASING DEPT, SUITE 4400, JEFFERSON PARISH GENERAL GOVERNMENT BUILDING, 200 DERBIGNY STREET, GRETN, LA 70053 UNTIL 2:00 PM, 7/11/2019 AND PUBLICLY OPENED THEREAFTER. For convenience, bidders may also submit bids in the East Bank Purchasing Department, Suite 404, Jefferson Parish Joseph S. Yenni Building, 1221 Elmwood Park Blvd., Jefferson LA 70123. However, if submitting bids on the day of bid opening, bidders must submit at the West Bank location only. All bids will be publicly opened at the West Bank location.

At no charge, bidders may also submit via Jefferson Parish's electronic procurement page by visiting www.jeffparishbids.net to register for this free site. Additional instructions are included in the text box highlighting electronic procurement.

LATE BIDS WILL NOT BE ACCEPTED

Unless submitting via online (see Page 3), each bid must be submitted in a sealed envelope bearing on the outside; the name of the Bidder, his address, and the name of the project for which the bid is submitted and the bid number.

NOTE: ONLY BIDS WRITTEN IN INK OR TYPEWRITTEN, AND PROPERLY SIGNED BY A MEMBER OF THE FIRM OR AUTHORIZED REPRESENTATIVE, WILL BE ACCEPTED. PENCIL AND/OR PHOTOSTATIC FIGURES OR SIGNATURES SHALL RESULT IN BID REJECTION.

INSTRUCTIONS FOR BIDDERS AND GENERAL CONDITIONS

THE FOLLOWING INSTRUCTIONS APPLY TO ALL BIDS

All bids submitted are subject to these instructions and general conditions and any special conditions and specifications contained herein, all of which are made part of this bid proposal reference. By submitting a bid, vendor agrees to comply with all provisions of Louisiana Law as well be in compliance with the Jefferson Parish Code of Ordinances, Louisiana Code of Ethics, applicable Jefferson Parish ethical standards and Jefferson Parish Resolution No. 113646 and/or Resolution No. 113647.

Jefferson Parish adheres to the Louisiana Code of Governmental Ethics, contained in Louisiana Revised Statutes Annotated, R.S. 42:1101, et seq. Vendor/Proposer by this submission, warrants that there are no "conflicts of interest" related to this procurement that would violate applicable Louisiana Law. Violation of the Louisiana Code of Governmental Ethics may result in rescission of contract, permit or licenses, and the imposition of fines and/or penalties, without contractual liability to the public in accordance with applicable law.

All vendors submitting bids should register as a Jefferson Parish vendor if not already yet registered. Registration forms may be downloaded from <http://purchasing.jeffparish.net> and by clicking on Vendor Information. Current W-9 forms with respective Tax Identification numbers and vendor applications may be submitted at any time; however, if your company is not registered and/or a current W-9 form is not on file, vendor registration is mandatory. Further, a current W-9 form and respective Tax Identification number must be supplied upon contract execution, should you be awarded a contract and/or issued purchase order. Failure to do so may result in delay of payment.

All quotations shall be based on F.O.B. Agency warehouse or job site, anywhere within the Parish as designated by the Purchasing Department. This provision does not apply to public works projects

JEFFERSON PARISH requires all products to be new (current) and all work must be performed according to standard practices for the project. Unless otherwise specified, no aftermarket parts will be accepted. Unless otherwise specified, all workmanship and materials must have at least one (1) year guaranty, in writing, from the date of delivery and/or acceptance of the project. Any deviations or alterations from the specifications must be indicated and/or supporting documentation supplied with bid submission.

Bidders should submit all questions in writing via email to the buyer's email address as indicated above, no later than Five (5) working days prior to the bid opening. Bid numbers should be mentioned in all requests. If submitting online, vendors may send questions via the E-Procurement site no later than Five (5) working days prior to the bid opening.

If this bid requires a pre-bid conference (see Additional Requirements section), bidders are advised that such conference will be held to allow bidders the opportunity to identify any discrepancies in the bid specifications and seek further clarification regarding instructions. The Purchasing Department will issue a written response to bidders' questions in the form of an Addendum. Please note that all official communication will be expressed in the form of an addendum.

Visit our website at [HTTP://PURCHASING.JEFFPARISH.NET](http://purchasing.jeffparish.net)

All formal Addenda require written acknowledgement on the bid form by the bidder. Failure to acknowledge an Addendum on the bid form shall cause the bid to be rejected. JEFFERSON PARISH reserves the right to award bid to next lowest responsive and responsible bidder in this event.

JEFFERSON PARISH will accept one price for each item unless otherwise indicated. Two or more prices for one item will result in bid rejection. Bidders are required to complete, sign and return the bid form and/or complete and return the associated line item pricing forms as indicated. Vendors must not alter the bid forms. Doing so will cause the bid to be rejected.

A corporate resolution or written evidence of the individual signing the bid having such authority must be submitted with the bid. Failure to comply will cause bid to be rejected. For corporate entities, such written evidence may be a printout of the Louisiana Secretary of State's website listing the signatory as an officer. Such printout shall be included with the bid submission. Bids submitted by Owners or Sole Proprietors must include certification that he or she owns the entity for which the bid is signed. This documentation must be submitted with the bid. Failure to do so will result in bid rejection.

NOTE: A sample corporate resolution can be downloaded from our website <http://purchasing.jeffparish.net> or you may provide your own document. A sample certification of sole proprietorship can also be downloaded from our website <http://purchasing.jeffparish.net> or you may provide your own document.

INSTRUCTIONS FOR BIDDERS AND GENERAL CONDITIONS

A. AWARD OF CONTRACT: JEFFERSON PARISH reserves the right to award contracts or place orders on a lump sum or individual item basis, or such combination, as shall in its judgment be in the best interest of JEFFERSON PARISH. Every contract or order shall be awarded to the LOWEST RESPONSIVE and RESPONSIBLE BIDDER, taking into consideration the CONFORMITY WITH THE SPECIFICATIONS and the DELIVERY AND/OR COMPLETION DATE. SPLIT AWARDS MADE TO SEVERAL VENDORS WILL ONLY BE GRANTED TO THOSE DEEMED RESPONSIVE AND RESPONSIBLE.

All bid prices shall remain valid for 45 days. Jefferson Parish and the lowest responsive and responsible bidder(s) by mutual written consent may mutually agree to extend the deadline for award by one (1) or more extensions of thirty (30) calendar days.

PROTESTS: Only those vendors that submit bids in response to this solicitation may protest any element of the procurement, in writing to the Director of the Purchasing Department. Written protest must be received within 48 hours of the release of the bid tabulation by the Purchasing Department. After consultation, the Parish Attorney's Office will then respond to protests in writing. (For more information, please see Chapter 2, Article VII, Division 2, Sec. 2-914.1 of the Jefferson Parish Code of Ordinances.)

PREFERENCE: Unless federal funding is directly spent by Jefferson Parish for this purchase, preference is hereby given to materials, supplies, and provisions produced, manufactured or grown in Louisiana, quality being equal to articles offered by competitors outside the state. "LSA - R.S. 38:2251-2261"

B. USE OF BRAND NAMES AND STOCK NUMBERS: Where brand names and stock numbers are specified, it is for the purpose of establishing certain minimum standards of quality. Bids may be submitted for products of equal quality, provided brand names and stock numbers are specified. Complete product data may be required prior to award.

C. CANCELLATION OF CONTRACT: JEFFERSON PARISH reserves the right to cancel all or any part if not shipped promptly. No charges will be allowed for parking or cartage unless specified in quotation. The order must not be filled at a higher price than quoted. JEFFERSON PARISH reserves the right to cancel any contract at anytime and for any reason by issuing a THIRTY (30) day written notice to the contractor.

For good cause and as consideration for executing a contract with Jefferson Parish, vendor conveys, sells, assigns, and transfers to Jefferson Parish or its assigns all rights, title and interest in and to all causes of action it may now or hereafter acquire under the antitrust laws of the United States and the State of Louisiana, relating to the particular good or services purchased or acquired by Jefferson Parish.

D. PRICES: Jefferson Parish is exempt from paying sales tax under LSA-R.S. 47:301 (8)(c). All prices for purchases by Jefferson Parish of supplies and materials shall be quoted in the unit of measure specified and unless otherwise specified, shall be exclusive of state and Parish taxes. The price quoted for work shall be stated in figures. In the event there is a difference in unit prices and totals, the unit price shall prevail.

Quantities listed are for bidding purposes only. Actual requirements may be more or less than quantities listed.

Bidders are not to exclude from participation in, deny the benefits of, or subject to discrimination under any program or activity, any person in the United States on the grounds of race, color, national origin, or sex; nor discriminate on the basis of age under the Age Discrimination Act of 1975, or with respect to an otherwise qualified handicapped individual as provided in Section 504 of the Rehabilitation Act of 1973, or on the basis of religion, except that any exemption from such prohibition against discrimination on the basis of religion as provided in the Civil Rights Act of 1964, or Title VI and VII of the Act of April 11, 1968, shall also apply. This assurance includes compliance with the administrative requirements of the Revenue Sharing final handicapped discrimination provisions contained in Section 51.55 (c), (d), (e), and (k)(5) of the Regulations. New construction or renovation projects must comply with Section 504 of the 1973 Rehabilitation Act, as amended, in accordance with the American National Standard Institute's specifications (ANSI A17.1-1961).

Jefferson Parish and its partners as the recipients of federal funds are fully committed to awarding a contract(s) to firm(s) that will provide high quality services and that are dedicated to diversity and to containing costs. Thus, Jefferson Parish strongly encourages the involvement of minority and/or woman-owned business enterprises (DBE's, including MBE's and SBE's) to stimulate participation in procurement and assistance programs.

DATE: 6/26/2019

BID NO.: 50-00126978

INSTRUCTIONS FOR BIDDERS AND GENERAL CONDITIONS

Page: 3

The purpose and intention of this invitation to bid is to afford all suppliers an equal opportunity to bid on all construction, maintenance, repair, operating supplies and/or equipment listed in this bid proposal. JEFFERSON PARISH WILL ACCEPT ONE BID ONLY FROM EACH VENDOR. Items bid must meet specifications.

Advertised bids will be tabulated and a copy of the tabulation will be forwarded to each responding bidder.

IN ACCORDANCE WITH STATE REGULATIONS JEFFERSON PARISH OFFERS ELECTRONIC PROCUREMENT TO ALL VENDORS

This electronic procurement system allows vendors the convenience of reviewing and submitting bids online. This is a secure site and authorized personnel have limited read access only. Bidders are encouraged to submit electronically using this free service; while the website accepts various file types, one single PDF file containing all appropriate and required bid documents is preferred. Bidders submitting uploaded images of bid responses are solely responsible for clarity. If uploaded images/documents are not legible, then bidder's submission will be rejected. Please note all requirements contained in this bid package for electronic bid submission.

Please visit our E-Procurement Page at www.jeffparishbids.net to register and view Jefferson Parish solicitations. For more information, please visit the Purchasing Department page at <http://purchasing.jeffparish.net>.

The general specifications for construction projects and the purchase of materials, services and/or supplies are those adopted by the JEFFERSON PARISH Council by Resolution No. 113646 or 113647 dated 12/09/09. The general conditions adopted by this resolution shall be considered as much a part of this document as if they were written wholly herein. A copy may be obtained from the Office of the Parish Clerk, Suite 6700, Jefferson Parish General Government Building, 200 Derbigny Street, Gretna, LA 70053. You may also obtain a copy by visiting the Purchasing Department webpage at <http://purchasing.jeffparish.net> and clicking on Online Forms.

ADDITIONAL REQUIREMENTS FOR THIS BID

PLEASE MATCH THE NUMBERS PRINTED IN THIS BOX WITH THE CORRESPONDING INSTRUCTIONS BELOW.

10, 12, 13, 15

1. All bidders must attend the MANDATORY pre-bid conference and will be required to sign in and out as evidence of attendance. In accordance with LSA R.S. 38:2212(I), all prospective bidders shall be present at the beginning of the MANDATORY pre-bid conference and shall remain in attendance for the duration of the conference. Any prospective bidder who fails to attend the conference or remain for the duration shall be prohibited from submitting a bid for the project.
2. Attendance to this pre-bid conference is optional. However, failure to attend the pre-bid conference shall not relieve the bidder of responsibility for information discussed at the conference. Furthermore, failure to attend the pre-bid conference and inspection does not relieve the successful bidder from the necessity of furnishing materials or performing any work that may be required to complete the work in accordance with the specification with no additional cost to the owner.
3. Contractor must hold current applicable JEFFERSON PARISH licenses with the Department of Inspection and Code Enforcement. Contractor shall obtain any and all permits required by the JEFFERSON PARISH Department of Inspection and Code Enforcement. The contractor shall be responsible for the payment of these permits. All permits must be obtained prior to the start of the project. Contractor must also hold any and all applicable Federal and State licenses. Contractor shall be responsible for the payment of these permits and shall obtain them prior to the start of the project.
4. A LA State Contractor's License will be required in accordance with LSA R.S. 37:2150 et. seq. and such license number will be shown on the outside of the bid envelope. Failure to comply will cause the bid to be rejected. Additionally if submitting the bid electronically, then the license number must be entered in the appropriate field in the Electronic Procurement system. Failure to comply will cause the bid to be rejected.
5. It is the bidder's responsibility to visit the job site and evaluate the job before submitting a bid.
6. Job site must be clean and free of all litter and debris daily and upon completion of the contract. Passageways must be kept clean and free of material, equipment, and debris at all times. Flammable material must be removed from the job site daily because storage will not be permitted on the premises. Precautions must be exercised at all times to safeguard the welfare of JEFFERSON PARISH and the general public.

INSTRUCTIONS FOR BIDDERS AND GENERAL CONDITIONS

7. **PUBLIC WORKS BIDS:** All awards for public works in excess of \$5,000.00 will be reduced to a formal contract which shall be recorded at the contractor's expense with the Clerk of Court and Ex-Officio Recorder of Mortgages for the Parish of Jefferson. A price list of recordation costs may be obtained from the Clerk of Court and Ex-Officio Recorder of Mortgages for the Parish of Jefferson. All awards in excess of \$25,000.00 will require both a performance and a payment bond. Unless otherwise stated in the bid specifications, the performance bond requirements shall be 100% of the contract price. Unless otherwise stated in the bid specifications, the payment bond requirements shall be 100% of the contract price. Both bonds shall be supplied at the signing of the contract.
8. **NON-PUBLIC WORKS BIDS:** A performance bond will be required for this bid. The amount of the bond will be 100% of the contract price unless otherwise indicated in the specifications. The performance bond shall be supplied at the signing of the contract.
9. **NON-PUBLIC WORKS BIDS:** A payment bond will be required for this bid. The amount of the bond will be 100% of the contract price unless otherwise indicated in the specifications. The payment bond shall be supplied at the signing of the contract.
10. All bidders must comply with the requirements stated in the attached "Standard Insurance Requirements" sheet attached to this bid solicitation. Prior to contract executions/purchase order issuance, the successful bidder will be required to provide final insurance certificates which shall name Jefferson Parish as an additional insured in accordance with the instructions in the aforementioned "Standard Insurance Requirements" sheet.
11. A bid bond will be required with bid submission in the amount of 5% of the total bid, unless otherwise stated in the bid specifications. Acceptable forms shall be limited to cashier's check, certified check, or surety bid bond. All sureties must be in original format (no copies). If submitting a bid online, vendors must submit an electronic bid bond through the respective online clearinghouse bond management system(s) as indicated in the electronic bid solicitation on Central Auction House. No scanned paper copies of any bid bond will be accepted as part of the electronic bid submission.
12. This is a requirements contract to be provided on an as needed basis. JEFFERSON PARISH makes no representations on warranties with regard to minimum guaranteed quantities unless otherwise stated in the bid specifications.
13. Freight charges should be included in total cost when quoting. If not quoted FOB DELIVERED, freight must be quoted as a separate item. Bid may be rejected if not quoted FOB DELIVERED or if freight charges are not indicated on bid form.
14. **PUBLIC WORKS BIDS - Completed, Signed and Properly Notarized Affidavits Required;** This applies to all solicitations for construction, alteration or demolition of public buildings or projects, in conformity with the provisions contained in LSA-RS 38:2212.9, LSA-RS 38:2212.10, LSA-RS 38:2224, and Sec 2-923.1 of the Jefferson Parish Code of Ordinances. For bidding purposes, all bidders must submit with bid submission COMPLETED, SIGNED and PROPERLY NOTARIZED Affidavits, including: Non-Conviction Affidavit, Non-Collusion Affidavit, Campaign Contribution Affidavit, Debt Disclosures Affidavit and E-Verify Affidavit. For the convenience of vendors, all affidavits have been combined into one form entitled PUBLIC WORKS BID AFFIDAVIT. This affidavit must be submitted in its original format, and without material alteration, in order to be compliant and for the bid to be considered responsive. A scanned copy of the completed, signed and properly notarized affidavit may be submitted with the bid, however, the successful bidder must submit the original affidavit in its original format and without material alteration upon contract execution. Failure to comply will result in the bid submission being rejected as non-responsive. The Parish reserves the right to award bid to the next lowest responsive and responsible bidder in this event.
15. **NON PUBLIC WORK BIDS - Completed, Signed and Properly Notarized Affidavits Required** in conformity with the provisions contained in LSA – RS 38:2224 and Sec 2-923.1 of the Jefferson Parish Code of Ordinances. For bidding purposes, all bidders must submit with bid submission COMPLETED, SIGNED and PROPERLY NOTARIZED Affidavits, including: Non-Collusion Affidavit, Debt Disclosures Affidavit and Campaign Contribution Affidavit. For the convenience of vendors, all affidavits have been combined into one form entitled NON PUBLIC WORKS BID AFFIDAVIT. This affidavit must be submitted in its original format, and without material alteration, in order to be compliant and for the bid to be considered responsive. A scanned copy of the completed, signed and properly notarized affidavit may be submitted with the bid, however, the successful bidder must submit the original affidavit in its original format and without material alteration upon contract execution. Failure to comply will result in the bid submission being rejected as non-responsive. The Parish reserves the right to award bid to the next lowest responsive and responsible bidder in this event.
16. The ensuing contract for this bid solicitation may be eligible for FEMA reimbursement and/or Federal funding/reimbursement. As such, the referenced appendix will be applicable accordingly and shall be considered a part of the bid documents. All applicable certifications must be duly completed, signed and submitted with bid submission. Failure to submit applicable certifications with bid submission will result in bid rejection.
17. For this project, the Contractor shall not pay any state or local sales or use taxes on materials and equipment which are affixed and made part of the immovable property of the project or which permanently incorporated in the project (hereinafter referred to as "applicable materials and equipment"). All purchases of applicable materials or equipment shall be made by the contractor on behalf of and as the agent of Jefferson Parish (Owner), a political subdivision of the State of Louisiana. No state and local sales and use taxes are owned on applicable materials and equipment under the provisions of Act 1029 of the 1991 Regular Session – Louisiana Revised Statute 47:301 (8)(c). Owner will furnish contractor a certificate form which certifies that Owner is not required to pay such state or local sales and use taxes, and contractor shall furnish a copy of such certificate to all vendors or suppliers of the applicable materials and equipment.

It shall be the duty of every parish officer, employee, department, agency, special district, board, and commission: and the duty of every contractor, subcontractor, and licensee of the parish, and the duty of every applicant for certification of eligibility for a parish contract or program, to cooperate with the Inspector General in any investigation, audit, inspection, performance review, or hearing pursuant to Jefferson Parish Code of Ordinances Section 2-155.10(19). By submitting a bid, vendor acknowledges this and will abide by all provisions of the referenced Jefferson Parish Code of Ordinances.

DATE: 6/26/2019

Page: 5

BID NO.: 50-00126978

BID FORM
Non Public Works

All Public Work Projects are required to use the Louisiana Uniform Public Work Bid Form

All prices must be held firm unless an escalation provision is requested in this bid. Jefferson Parish will allow one escalation during the term of the contract, which may not exceed the U.S. Bureau of Labor Statistics National Index for all Urban Consumers, unadjusted 12 month figure. The most recently published figure issued at the time an adjustment is requested will be used. A request must be made in writing by the vendor, and the escalation will only be applied to purchases made after the request is made.

Are you requesting an escalation provision?

YES ☒ NO ☐

MAXIMUM ESCALATION PERCENTAGE REQUESTED N/A %

INITIAL BID PRICES WILL REMAIN FIRM THROUGH THE DATE OF 7-24-2020

For the purposes of comparison of bids when an escalation provision is requested, Jefferson Parish will apply the maximum escalation percentage quoted by the bidder to the period to which it is applied in the bid. The initial price and the escalation will be used to calculate the total bid price. It will be assumed, for comparison of prices only, that an equal amount of material or labor is purchased each month throughout the entire contract.

DELIVERY: FOB JEFFERSON PARISH

INDICATE DELIVERY DATE ON EQUIPMENT AND SUPPLIES

7-10 Days ARO

LOUISIANA CONTRACTOR'S LICENSE NO.: (if applicable) N/A

THIS SECTION MUST BE COMPLETED BY BIDDER:

FIRM NAME: Cimisco Inc.
ADDRESS: 1840 LGA Road
CITY, STATE: Metairie LA ZIP: 70001
TELEPHONE: () 504-835-17319 FAX: () 504-833-0820
EMAIL ADDRESS: Aaron@cimiscoinc.com

In the event that addenda are issued with this bid, bidders MUST acknowledge all addenda on the bid form. Bidder must acknowledge receipt of an addendum on the bid form as indicated. Failure to acknowledge any addendum on the bid form will result in bid rejection.

Acknowledge Receipt of Addenda: NUMBER: #1 7-10-19 see ATTACHED
NUMBER: AMR
NUMBER:
NUMBER:

TOTAL PRICE OF ALL BID ITEMS: \$ 151,168.83
AUTHORIZED SIGNATURE: Aaron Roorel Printed Name
TITLE: Sales

SIGNING INDICATES YOU HAVE READ AND COMPLY WITH THE INSTRUCTIONS AND CONDITIONS.

NOTE: All bids should be returned with the BID NUMBER and BID OPENING DATE indicated on the outside of the envelope submitted to the Purchasing Department.



JEFFERSON PARISH

Department of Purchasing

Michael S. Yenni
Parish President

Renny Simno
Director

July 10, 2019

ADDENDUM # 1

Bid No. 50-00126978

Bid Opening Date: July 11, 2019
Bid Postponed to: July 25, 2019

For: ONE YEAR CONTRACT FOR A SUPPLY OF DUCTILE IRON FITTINGS AND ADAPTER KITS FOR PRICE BROTHERS PIPE FOR THE JEFFERSON PARISH DEPARTMENT OF PUBLIC WORKS, WATERWORKS AND ALL JEFFERSON PARISH AGENCIES AND MUNICIPALITIES

Due to All Jefferson Parish Departments closing at noon on Thursday, July 11, 2019 and will remain closed through Friday, July 12, 2019 due to the possible severe tropical weather reported by the National Weather Service. The bid opening scheduled for July 11, 2019 at 2 pm is cancelled.

Please note bid has been postponed to July 25, 2019

Sincerely,

DONNA M EVANS, Buyer II
Jefferson Parish Purchasing Department

Bidders must acknowledge all addenda on the bid form. Bidder acknowledges receipt of
This addendum on the bid form as indicated. Failure to do so will result in bid rejection.

This addendum is a part of the contract documents and modifies the original bidding documents and specifications. The contents of this addendum shall be included in the contract documents. Changes made by this addendum shall take precedence over the documents of earlier date.

INVITATION TO BID FROM JEFFERSON PARISH - continued

BID NO.: 50-00126978

SEALED BID

ITEM NUMBER	QUANTITY	U/M	DESCRIPTION OF ARTICLES	UNIT PRICE QUOTED	TOTALS
1	1.00	ONLY	ONE YEAR CONTRACT FOR A SUPPLY OF DUCTILE IRON FITTINGS AND ADAPTER KITS FOR PRICE BROTHERS PIPE FOR THE JEFFERSON PARISH DEPARTMENT OF PUBLIC WORKS, WATERWORKS AND ALL PAR AGENCIES 0010 MECHANICAL JOINT SOLID REPAIR SLEEVES 3 INCH (LONG BODY) GROUP 1	31.00	31.00
2	1.00	ONLY	ONE (1) YEAR CONTRACT FOR A SUPPLY OF DUCTILE IRON FITTINGS AND ADAPTER KITS FOR THE JEFFERSON PARISH DEPARTMENT OF PUBLIC WORKS - WATER AND ALL JEFFERSON PARISH AGENCIES AND MUNICIPALITIES 0030 MECHANICAL JOINT SOLID REPAIR SLEEVES 4 INCH (LONG BODY) (10001A) GROUP 1	34.00	34.00
3	1.00	ONLY	0040 MECHANICAL JOINT SOLID REPAIR SLEEVES 4 INCH (COMPACT BODY) (10001) GROUP 1	24.50	24.50
4	1.00	ONLY	0050 MECHANICAL JOINT SOLID REPAIR SLEEVES 6 INCH (LONG BODY) GROUP 1	92.00	92.00
5	1.00	ONLY	0060 MECHANICAL JOINT SOLID REPAIR SLEEVES 6 INCH (COMPACT BODY) (10002) GROUP 1	45.50	45.50
6	1.00	ONLY	0070 MECHANICAL JOINT SOLID REPAIR SLEEVES 8 INCH (LONG BODY) GROUP 1	95.00	95.00
7	1.00	ONLY	0080 MECHANICAL JOINT SOLID REPAIR SLEEVES 8 INCH (COMPACT BODY) (10003) GROUP 1	78.24	78.24
8	1.00	ONLY	0090 MECHANICAL JOINT SOLID REPAIR SLEEVES 10 INCH (LONG BODY) (10004A) GROUP 1	92.00	92.00

INVITATION TO BID FROM JEFFERSON PARISH - continued

BID NO.: 50-00126978

SEALED BID

ITEM NUMBER	QUANTITY	U/M	DESCRIPTION OF ARTICLES	UNIT PRICE QUOTED	TOTALS
9	1.00	ONLY	GROUP 1 0100 MECHANICAL JOINT SOLID REPAIR SLEEVES 10 INCH (COMPACT BODY) (10004)	8900	8900
10	1.00	ONLY	GROUP 1 0110 MECHANICAL JOINT SOLID REPAIR SLEEVES 12 INCH (LONG BODY) (10005A)	19104	19104
11	1.00	ONLY	GROUP 1 0120 MECHANICAL JOINT SOLID REPAIR SLEEVES 12 INCH (COMPACT BODY) (10005)	12300	12300
12	1.00	ONLY	GROUP 1 0130 MECHANICAL JOINT SOLID REPAIR SLEEVES 14 INCH (LONG BODY)	19100	19100
13	1.00	ONLY	GROUP 1 0145 MECHANICAL JOINT SOLID REPAIR SLEEVES 16 INCH (LONG BODY) (10007A)	34156	34156
14	1.00	ONLY	GROUP 1 0150 MECHANICAL JOINT SOLID REPAIR SLEEVES 16 INCH (COMPACT BODY) (10007)	25900	25900
15	1.00	ONLY	GROUP 1 0160 MECHANICAL JOINT SOLID REPAIR SLEEVES 18 INCH (LONG BODY) (10008A)	36100	36100
16	1.00	ONLY	GROUP 1 0170 MECHANICAL JOINT SOLID REPAIR SLEEVES 18 INCH (COMPACT BODY) (10008)	30000	30000
17	1.00	ONLY	GROUP 1 0195 MECHANICAL JOINT SOLID REPAIR SLEEVES 24 INCH (LONG BODY) (10010A)	69071	69071

INVITATION TO BID FROM JEFFERSON PARISH - continued

BID NO.: 50-00126978

SEALED BID

ITEM NUMBER	QUANTITY	U/M	DESCRIPTION OF ARTICLES	UNIT PRICE QUOTED	TOTALS
18	1.00	ONLY	GROUP 1 0200 MECHANICAL JOINT SOLID REPAIR SLEEVES 24 INCH (COMPACT BODY) (10010)	505 ⁰⁰	505 ⁰⁰
19	1.00	ONLY	GROUP 1 0210 MECHANICAL JOINT SOLID REPAIR SLEEVES 30 INCH (LONG BODY) (10011A)	1400 ⁰⁰	1400 ⁰⁰
20	1.00	ONLY	GROUP 1 0220 MECHANICAL JOINT SOLID REPAIR SLEEVES 30 INCH (COMPACT BODY) (10011)	1495 ⁰⁰	1495 ⁰⁰
21	1.00	ONLY	GROUP 1 0230 MECHANICAL JOINT SOLID REPAIR SLEEVES 36 INCH (LONG BODY) C-110 (10012A)	2300 ⁰⁰	2300 ⁰⁰
22	1.00	ONLY	GROUP 1 0240 MECHANICAL JOINT SOLID REPAIR SLEEVES 36 INCH (COMPACT BODY) C-110 (10012)	208 ⁰⁰	208 ⁰⁰
23	1.00	ONLY	GROUP 1 0250 MECHANICAL JOINT SOLID REPAIR SLEEVES 42 INCH (LONG BODY) C-110	2500 ⁰⁰	2500 ⁰⁰
24	1.00	ONLY	GROUP 1 0280 MECHANICAL JOINT SOLID REPAIR SLEEVES 48 INCH (COMPACT BODY) C-110 (10014)	3500 ⁰⁰	3500 ⁰⁰
25	1.00	ONLY	GROUP 1 0290 MECHANICAL JOINT, 90 DEGREE BENDS 3 INCH (06475)	36 ⁰⁰	36 ⁰⁰
			GROUP 2		

DATE: 6/26/2019

Page 9

INVITATION TO BID FROM JEFFERSON PARISH - continued

BID NO.: 50-00126978

SEALED BID

ITEM NUMBER	QUANTITY	U/M	DESCRIPTION OF ARTICLES	UNIT PRICE QUOTED	TOTALS
26	1.00	ONLY	0295 MECHANICAL JOINT, 90 DEGREE BENDS 4 INCH (06476) GROUP 2	3900	3900
27	1.00	ONLY	0300 MECHANICAL JOINT, 90 DEGREE BENDS 6 INCH (06477) GROUP 2	95.92	95.92
28	1.00	ONLY	0310 MECHANICAL JOINT, 90 DEGREE BENDS 8 INCH (06478) GROUP 2	9800	9800
29	1.00	ONLY	0330 MECHANICAL JOINT, 90 DEGREE BENDS 12 INCH (06480) GROUP 2	30500	30500
30	1.00	ONLY	0360 MECHANICAL JOINT, 90 DEGREE BENDS 18 INCH (06483) GROUP 2	53000	53000
31	1.00	ONLY	0390 MECHANICAL JOINT, 90 DEGREE BENDS 30 INCH C-110 GROUP 2	250000	250000
32	1.00	ONLY	0400 MECHANICAL JOINT, 90 DEGREE BENDS 36 INCH C-110 GROUP 2	400000	400000
33	1.00	ONLY	0410 MECHANICAL JOINT X FLANGE, 90 DEGREE BENDS, 3 INCH GROUP 3	4200	4200
34	1.00	ONLY	0420 MECHANICAL JOINT X FLANGE, 90 DEGREE BENDS, 4 INCH	6928	6928

INVITATION TO BID FROM JEFFERSON PARISH - continued

BID NO.: 50-00126978

SEALED BID

ITEM NUMBER	QUANTITY	U/M	DESCRIPTION OF ARTICLES	UNIT PRICE QUOTED	TOTALS
35	1.00	ONLY	GROUP 3 0430 MECHANICAL JOINT X FLANGE, 90 DEGREE BENDS, 6 INCH (06277)	132.00	132.00
36	1.00	ONLY	GROUP 3 <i>C-110 End Band</i> 0450 MECHANICAL JOINT X FLANGE, 90 DEGREE BENDS, 30 INCH C-110	2800.00	2800.00
37	1.00	ONLY	GROUP 3 <i>FULL C-110 Band</i> 0460 MECHANICAL JOINT X FLANGE, 90 DEGREE BENDS, 36 INCH C-110	2859.00	2859.00
38	1.00	ONLY	GROUP 3 0470 MECHANICAL JOINT, 45 DEGREE BENDS 3 INCH (06450)	35.00	35.00
39	1.00	ONLY	GROUP 4 0480 MECHANICAL JOINT, 45 DEGREE BENDS 4 INCH (06451)	43.00	43.00
40	1.00	ONLY	GROUP 4 0490 MECHANICAL JOINT, 45 DEGREE BENDS 6 INCH (06452)	154.08	154.08
41	1.00	ONLY	GROUP 4 0500 MECHANICAL JOINT, 45 DEGREE BENDS 8 INCH (06453)	159.00	159.00
42	1.00	ONLY	GROUP 4 0520 MECHANICAL JOINT, 45 DEGREE BENDS 12 INCH (06455)	177.00	177.00
43	1.00	ONLY	GROUP 4 0540 MECHANICAL JOINT, 45 DEGREE BENDS <i>16"</i>	290.00	290.00

INVITATION TO BID FROM JEFFERSON PARISH - continued

BID NO.: 50-00126978

SEALED BID

ITEM NUMBER	QUANTITY	U/M	DESCRIPTION OF ARTICLES	UNIT PRICE QUOTED	TOTALS
44	1.00	ONLY	16 INCH (06457) GROUP 4	690.00	690.00
45	1.00	ONLY	0570 MECHANICAL JOINT, 45 DEGREE BENDS 24 INCH (06460) GROUP 4	2100.00	2100.00
46	1.00	ONLY	0580 MECHANICAL JOINT, 45 DEGREE BENDS 30 INCH C-110 GROUP 4	4800.00	4800.00
47	1.00	ONLY	0600 MECHANICAL JOINT X FLANGE, 45 DEGREE BENDS, 3 INCH GROUP 5	59.00	59.00
48	1.00	ONLY	0620 MECHANICAL JOINT X FLANGE, 45 DEGREE BENDS, 6 INCH (06252) GROUP 5	136.00	136.00
49	1.00	ONLY	0630 MECHANICAL JOINT X FLANGE, 45 DEGREE BENDS, 8 INCH (06253) GROUP 5	170.00	170.00
50	1.00	ONLY	0640 MECHANICAL JOINT, 22-1/2 DEGREE BENDS, 3 INCH GROUP 6	290.00	290.00
51	1.00	ONLY	0650 MECHANICAL JOINT, 22-1/2 DEGREE BENDS, 4 INCH (06426) GROUP 6	41.28	41.28
52	1.00	ONLY	0660 MECHANICAL JOINT, 22-1/2 DEGREE BENDS, 6 INCH (06427) GROUP 6	780.00	780.00
			0670 MECHANICAL JOINT, 22-1/2 DEGREE BENDS, 8 INCH (06428) GROUP 6		

INVITATION TO BID FROM JEFFERSON PARISH - continued

BID NO.: 50-00126978

SEALED BID

ITEM NUMBER	QUANTITY	U/M	DESCRIPTION OF ARTICLES	UNIT PRICE QUOTED	TOTALS
53	1.00	ONLY	GROUP 6 0720 MECHANICAL JOINT, 22-1/2 DEGREE BENDS, 18 INCH (06433)	320 ⁰⁰ —	320 ⁰⁰ —
54	1.00	ONLY	GROUP 6 0730 MECHANICAL JOINT, 22-1/2 DEGREE BENDS, 20 INCH (06434)	440 ⁰⁰ —	440 ⁰⁰ —
55	1.00	ONLY	GROUP 6 0750 MECHANICAL JOINT, 11-1/4 DEGREE BENDS, 6 INCH (06502)	500 ⁰⁰ —	500 ⁰⁰ —
56	1.00	ONLY	GROUP 7 0760 MECHANICAL JOINT, 11-1/4 DEGREE BENDS, 8 INCH (06503)	67 ⁰⁰ —	67 ⁰⁰ —
57	1.00	ONLY	GROUP 7 0770 MECHANICAL JOINT, 11-1/4 DEGREE BENDS, 12 INCH (06505)	136 ⁰⁰ —	136 ⁰⁰ —
58	1.00	ONLY	GROUP 7 0780 MECHANICAL JOINT, 11-1/4 DEGREE BENDS, 20 INCH (06509)	449 ⁰⁰ —	449 ⁰⁰ —
59	1.00	ONLY	GROUP 7 0790 MECHANICAL JOINT TEES, 3 INCH BY 3 INCH	41 ⁰⁰ —	41 ⁰⁰ —
60	1.00	ONLY	GROUP 8 0800 MECHANICAL JOINT TEES, 4 INCH BY 4 INCH (10402)	82 ⁰⁰ —	82 ⁰⁰ —
61	1.00	ONLY	GROUP 8 0810 MECHANICAL JOINT TEES, 6 INCH BY 4 INCH (10403)	84 ⁰⁰ —	84 ⁰⁰ —

INVITATION TO BID FROM JEFFERSON PARISH - continued

BID NO.: 50-00126978

SEALED BID

ITEM NUMBER	QUANTITY	U/M	DESCRIPTION OF ARTICLES	UNIT PRICE QUOTED	TOTALS
62	1.00	ONLY	GROUP 8 0820 MECHANICAL JOINT TEES, 6 INCH BY 6 INCH (10404)	125 ⁰⁰ —	125 ⁰⁰ —
63	1.00	ONLY	GROUP 8 0830 MECHANICAL JOINT TEES, 8 INCH BY 6 INCH (10406)	169 ⁰⁰ —	169 ⁰⁰ —
64	1.00	ONLY	GROUP 8 0840 MECHANICAL JOINT TEES, 8 INCH BY 8 INCH (10407)	194 ⁰⁰ —	194 ⁰⁰ —
65	1.00	ONLY	GROUP 8 0850 MECHANICAL JOINT TEES, 10 INCH BY 6 INCH (10408)	125 ⁰⁰ —	125 ⁰⁰ —
66	1.00	ONLY	GROUP 8 0860 MECHANICAL JOINT TEES, 10 INCH BY 8 INCH (10409)	135 ⁰⁰ —	135 ⁰⁰ —
67	1.00	ONLY	GROUP 8 0870 MECHANICAL JOINT TEES, 10 INCH BY 10 INCH (10410)	195 ⁰⁰ —	195 ⁰⁰ —
68	1.00	ONLY	GROUP 8 0880 MECHANICAL JOINT TEES, 12 INCH BY 6 INCH (10411)	242 ⁰⁰ —	242 ⁰⁰ —
69	1.00	ONLY	GROUP 8 0890 MECHANICAL JOINT TEES, 12 INCH BY 8 INCH (10412)	222 ⁰⁰ —	222 ⁰⁰ —
70	1.00	ONLY	GROUP 8 0900 MECHANICAL JOINT TEES, 12 INCH BY 12 INCH (10414)	315 ⁰⁰ —	315 ⁰⁰ —

INVITATION TO BID FROM JEFFERSON PARISH - continued

BID NO.: 50-00126978

SEALED BID

ITEM NUMBER	QUANTITY	U/M	DESCRIPTION OF ARTICLES	UNIT PRICE QUOTED	TOTALS
71	1.00	ONLY	GROUP 8 0910 MECHANICAL JOINT TEES, 16 INCH BY 6 INCH	31900	31900
72	1.00	ONLY	GROUP 8 0920 MECHANICAL JOINT TEES, 16 INCH BY 8 INCH (10421)	409.76	409.76
73	1.00	ONLY	GROUP 8 0970 MECHANICAL JOINT X FLANGE TEES, 6 INCH BY 4 INCH	12600	12600
74	1.00	ONLY	GROUP 9 0980 MECHANICAL JOINT X FLANGE TEES, 6 INCH BY 6 INCH (10504)	17400	17400
75	1.00	ONLY	GROUP 9 0990 MECHANICAL JOINT X FLANGE TEES, 8 INCH BY 6 INCH (10506)	19600	19600
76	1.00	ONLY	GROUP 9 1000 MECHANICAL JOINT X FLANGE TEES, 10 INCH BY 6 INCH	17900	17900
77	1.00	ONLY	GROUP 9 1020 MECHANICAL JOINT X FLANGE TEES, 12 INCH BY 6 INCH (10511)	29500	29500
78	1.00	ONLY	GROUP 9 1025 MECHANICAL JOINT X FLANGE TEES, 14 INCH BY 6 INCH	30300	30300
79	1.00	ONLY	GROUP 9 1040 MECHANICAL JOINT X SWIVEL TEES, 6 INCH BY 6 INCH (10700)	14800	14800

INVITATION TO BID FROM JEFFERSON PARISH - continued

BID NO.: 50-00126978

SEALED BID

ITEM NUMBER	QUANTITY	U/M	DESCRIPTION OF ARTICLES	UNIT PRICE QUOTED	TOTALS
80	1.00	ONLY	GROUP 10 1050 MECHANICAL JOINT X SWIVEL TEES, 8 INCH BY 6 INCH (10701) GROUP 10	220 ⁰⁰ —	220 ⁰⁰ —
81	1.00	ONLY	1060 MECHANICAL JOINT X SWIVEL TEES, 8 INCH BY 8 INCH (10702) GROUP 10	259 ⁰⁰ —	259 ⁰⁰ —
82	1.00	ONLY	1070 MECHANICAL JOINT X SWIVEL TEES, 10 INCH BY 6 INCH (10703) GROUP 10	130 ⁰⁰ —	130 ⁰⁰ —
83	1.00	ONLY	1080 MECHANICAL JOINT X SWIVEL TEES, 12 INCH BY 6 INCH (10705) GROUP 10	198 ⁰⁰ —	198 ⁰⁰ —
84	1.00	ONLY	1090 MECHANICAL JOINT X SWIVEL TEES, 12 INCH BY 8 INCH (10706) GROUP 10	240 ⁰⁰ —	240 ⁰⁰ —
85	1.00	ONLY	1110 MECHANICAL JOINT X SWIVEL TEES, 16 INCH BY 6 INCH (10709) GROUP 10	289 ⁰⁰ —	289 ⁰⁰ —
86	1.00	ONLY	1130 MECHANICAL JOINT CROSSES, 4 INCH BY 4 INCH GROUP 11	110 ⁰⁰ —	110 ⁰⁰ —
87	1.00	ONLY	1140 MECHANICAL JOINT CROSSES, 4 INCH BY 6 INCH GROUP 11	101 ⁰⁰ —	101 ⁰⁰ —
88	1.00	ONLY	1150 MECHANICAL JOINT CROSSES, 6 INCH BY 6 INCH	148 ⁰⁰ —	148 ⁰⁰ —

INVITATION TO BID FROM JEFFERSON PARISH - continued

BID NO.: 50-00126978

SEALED BID

ITEM NUMBER	QUANTITY	U/M	DESCRIPTION OF ARTICLES	UNIT PRICE QUOTED	TOTALS
89	1.00	ONLY	GROUP 11 1160 MECHANICAL JOINT CONCENTRIC REDUCERS, 4 INCH BY 3 INCH (09401)	34.30	34.30
90	1.00	ONLY	GROUP 12 1170 MECHANICAL JOINT CONCENTRIC REDUCERS, 6 INCH BY 4 INCH (09402)	37.00	37.00
91	1.00	ONLY	GROUP 12 1180 MECHANICAL JOINT CONCENTRIC REDUCERS, 8 INCH BY 4 INCH (09403)	51.00	51.00
92	1.00	ONLY	GROUP 12 1190 MECHANICAL JOINT CONCENTRIC REDUCERS, 8 INCH BY 6 INCH (09404)	57.00	57.00
93	1.00	ONLY	GROUP 12 1210 MECHANICAL JOINT CONCENTRIC REDUCERS, 10 INCH BY 8 INCH (09406)	58.00	58.00
94	1.00	ONLY	GROUP 12 1220 MECHANICAL JOINT CONCENTRIC REDUCERS, 12 INCH BY 6 INCH (09407)	94.92	94.92
95	1.00	ONLY	GROUP 12 1230 MECHANICAL JOINT CONCENTRIC REDUCERS, 12 INCH BY 8 INCH (09408)	95.00	95.00
96	1.00	ONLY	GROUP 12 1240 MECHANICAL JOINT CONCENTRIC REDUCERS, 12 INCH BY 10 INCH (09409)	98.00	98.00
97	1.00	ONLY	GROUP 12 1250 MECHANICAL JOINT CONCENTRIC REDUCERS, 14 INCH BY 6 INCH (09410)	169.00	169.00

INVITATION TO BID FROM JEFFERSON PARISH - continued

BID NO.: 50-00126978

SEALED BID

ITEM NUMBER	QUANTITY	U/M	DESCRIPTION OF ARTICLES	UNIT PRICE QUOTED	TOTALS
98	1.00	ONLY	GROUP 12 1270 MECHANICAL JOINT X FLANGE ADAPTERS, 4 INCH (09900)	41 ⁰⁰ 41 ⁰⁰	
99	1.00	ONLY	GROUP 13 1280 MECHANICAL JOINT X FLANGE ADAPTERS, 6 INCH (09901)	51 ⁰⁰ 51 ⁰⁰	
100	1.00	ONLY	GROUP 13 1290 MECHANICAL JOINT X FLANGE ADAPTERS, 8 INCH (09902)	79 ⁰⁰ 79 ⁰⁰	
101	1.00	ONLY	GROUP 13 1310 MECHANICAL JOINT CAP, 4 INCH (06701)	29 ⁰⁰ 29 ⁰⁰	
102	1.00	ONLY	GROUP 14 1320 MECHANICAL JOINT CAP, 6 INCH (06702)	33 ⁰⁰ 33 ⁰⁰	
103	1.00	ONLY	GROUP 14 1330 MECHANICAL JOINT CAP, 8 INCH (06703)	43 ⁰⁰ 43 ⁰⁰	
104	1.00	ONLY	GROUP 14 1380 MECHANICAL JOINT PLUG, 4 INCH (09001)	17 ⁰⁰ 17 ⁰⁰	
105	1.00	ONLY	1390 MECHANICAL JOINT PLUG, 6 INCH (09002)	99 ⁰⁰ 99 ⁰⁰	
106	1.00	ONLY	GROUP 15 1400 MECHANICAL JOINT PLUG, 8 INCH (09003)	143 ⁰⁰ 143 ⁰⁰	

INVITATION TO BID FROM JEFFERSON PARISH - continued

BID NO.: 50-00126978

SEALED BID

ITEM NUMBER	QUANTITY	U/M	DESCRIPTION OF ARTICLES	UNIT PRICE QUOTED	TOTALS
107	1.00	ONLY	GROUP 15 1420 MECHANICAL JOINT PLUG, 12 INCH (09005)	88 ⁰⁰ —	88 ⁰⁰ —
108	1.00	ONLY	GROUP 15 1470 MECHANICAL JOINT OFFSET, 6 INCH BY 12 INCH (10778)	216 ⁰⁰ —	216 ⁰⁰ —
109	1.00	ONLY	GROUP 16 1480 MECHANICAL JOINT OFFSET, 8 INCH BY 12 INCH (10781)	264 ⁰⁰ —	264 ⁰⁰ —
110	1.00	ONLY	GROUP 16 1500 PRICE BROTHERS PIPE ADAPTER KITS, 16 INCH BY 24 INCH LENGTH (56760)	5900 ⁰⁰ —	5900 ⁰⁰ —
111	1.00	ONLY	GROUP 17 1510 PRICE BROTHERS PIPE ADAPTER KITS, 18 INCH BY 24 INCH LENGTH (56761)	5950 ⁰⁰ —	5950 ⁰⁰ —
112	1.00	ONLY	GROUP 17 1520 PRICE BROTHERS PIPE ADAPTER KITS, 20 INCH BY 24 INCH LENGTH (56762)	6010 ⁰⁰ —	6010 ⁰⁰ —
113	1.00	ONLY	GROUP 17 1530 PRICE BROTHERS PIPE ADAPTER KITS, 24 INCH BY 24 INCH LENGTH (56763)	7300 ⁰⁰ —	7300 ⁰⁰ —
114	1.00	ONLY	GROUP 17 1540 PRICE BROTHERS PIPE ADAPTER KITS, 30 INCH BY 24 INCH LENGTH (56764)	7600 ⁰⁰ —	7600 ⁰⁰ —
115	1.00	ONLY	GROUP 17 1550 PRICE BROTHERS PIPE ADAPTER KITS, 36 INCH BY 24 INCH LENGTH (56765)	9400 ⁰⁰ —	9400 ⁰⁰ —

INVITATION TO BID FROM JEFFERSON PARISH - continued

BID NO.: 50-00126978

SEALED BID

ITEM NUMBER	QUANTITY	U/M	DESCRIPTION OF ARTICLES	UNIT PRICE QUOTED	TOTALS
116	1.00	ONLY	GROUP 17 1560 PRICE BROTHERS PIPE ADAPTER KITS, 42 INCH BY 24 INCH LENGTH (56766)	10500 ⁰⁰	10,500 ⁰⁰
117	1.00	ONLY	GROUP 17 1570 PRICE BROTHERS PIPE ADAPTER KITS, 48 INCH BY 24 INCH LENGTH (56767)	11,900 ⁰⁰	11,900 ⁰⁰
118	1.00	ONLY	GROUP 17 1710 FLANGED JOINT, 45 DEGREE BEND (PROTECTO 401 CERAMIC INTERIOR LINING) 10 INCH Group 20	490 ⁰⁰	490 ⁰⁰
119	1.00	ONLY	1715 FLANGED JOINT, 45 DEGREE BEND (PROTECTO 401 CERAMIC INTERIOR LINING) 12 INCH (06155) Group 20	680 ⁰⁰	680 ⁰⁰
120	1.00	ONLY	1770 FLANGED JOINT, 90 DEGREE BEND (PROTECTO 401 CERAMIC INTERIOR LINING) 3 INCH (06175) Group 21	165 ⁰⁰	165 ⁰⁰
121	1.00	ONLY	1780 FLANGED JOINT, 90 DEGREE BEND (PROTECTO 401 CERAMIC INTERIOR LINING) 4 INCH (06176)A Group 21	205 ⁰⁰	205 ⁰⁰
122	1.00	ONLY	1790 FLANGED JOINT, 90 DEGREE BEND (PROTECTO 401 CERAMIC INTERIOR LINING) 6 INCH (06177) Group 21	297 ⁰⁰	297 ⁰⁰
123	1.00	ONLY	1800 FLANGED JOINT, 90 DEGREE BEND (PROTECTO 401 CERAMIC INTERIOR LINING)	394 ⁰⁰	394 ⁰⁰

INVITATION TO BID FROM JEFFERSON PARISH - continued

BID NO.: 50-00126978

SEALED BID

ITEM NUMBER	QUANTITY	U/M	DESCRIPTION OF ARTICLES	UNIT PRICE QUOTED	TOTALS
124	1.00	ONLY	8 INCH (06178) Group 21 1820 FLANGED JOINT, 90 DEGREE BEND (PROTECTO 401 CERAMIC INTERIOR LINING) 12 INCH (06180) Group 21	699.00	699.00
125	1.00	ONLY	1870 FLANGED JOINT, 90 DEGREE BEND REDUCING (PROTECTO 401 CERAMIC INTERIOR LINING) 12 INCH BY 10 INCH (06200)A Group 22	628.00	628.00
126	1.00	ONLY	1880 FLANGED JOINT, 90 DEGREE BEND REDUCING (PROTECTO 401 CERAMIC INTERIOR LINING) 14 INCH BY 10 INCH (06203)A Group 22	509.00	509.00
127	1.00	ONLY	1890 FLANGED JOINT, CROSSES (PROTECTO 401 CERAMIC INTERIOR LINING) 4 INCH BY 4 INCH (07202)A Group 23	249.00	249.00
128	1.00	ONLY	1900 FLANGED JOINT, CROSSES (PROTECTO 401 CERAMIC INTERIOR LINING) 6 INCH BY 6 INCH (07203) A Group 23	408.00	408.00
129	1.00	ONLY	1930 FLANGED JOINT, CROSSES (PROTECTO 401 CERAMIC INTERIOR LINING) 12 INCH BY 12 INCH (07206)A Group 23	1100.00	1100.00
130	1.00	ONLY	1940 FLANGED JOINT, CROSSES (PROTECTO 401 CERAMIC INTERIOR LINING) 12 INCH BY 6 INCH (07209) A Group 23	1044.00	1044.00
131	1.00	ONLY	1950 FLANGED JOINT, CROSSES (PROTECTO 401 CERAMIC INTERIOR LINING)	1558.00	1558.00

DATE: 6/26/2019

Page 21

INVITATION TO BID FROM JEFFERSON PARISH - continued

BID NO.: 50-00126978

SEALED BID

ITEM NUMBER	QUANTITY	U/M	DESCRIPTION OF ARTICLES	UNIT PRICE QUOTED	TOTALS
132	1.00	ONLY	16 INCH BY 6 INCH (07212) A Group 23 1960 FLANGED JOINT, CONCENTRIC REDUCERS (PROTECTO 401 CERAMIC INTERIOR LINING) 4 INCH BY 3 INCH (09101) A Group 24	153 ⁰⁰	153 ⁰⁰
133	1.00	ONLY	1970 FLANGED JOINT, CONCENTRIC REDUCERS (PROTECTO 401 CERAMIC INTERIOR LINING) 6 INCH BY 3 INCH (09102) A Group 24	190 ⁰⁰	190 ⁰⁰
134	1.00	ONLY	1980 FLANGED JOINT, CONCENTRIC REDUCERS (PROTECTO 401 CERAMIC INTERIOR LINING) 6 INCH BY 4 INCH (09103) A Group 24	291 ⁰⁰	291 ⁰⁰
135	1.00	ONLY	1990 FLANGED JOINT, CONCENTRIC REDUCERS (PROTECTO 401 CERAMIC INTERIOR LINING) 8 INCH BY 6 INCH (09104) A Group 24	350 ⁰⁰	350 ⁰⁰
136	1.00	ONLY	2000 FLANGED JOINT, CONCENTRIC REDUCERS (PROTECTO 401 CERAMIC INTERIOR LINING) 10 INCH BY 6 INCH (09105) A Group 24	408 ⁰⁰	408 ⁰⁰
137	1.00	ONLY	2010 FLANGED JOINT, CONCENTRIC REDUCERS (PROTECTO 401 CERAMIC INTERIOR LINING) 10 INCH BY 8 INCH (09106) A Group 24	408 ⁰⁰	408 ⁰⁰
138	1.00	ONLY	2020 FLANGED JOINT, CONCENTRIC REDUCERS	518 ⁰⁰	518 ⁰⁰

DATE: 6/26/2019

INVITATION TO BID FROM JEFFERSON PARISH - continued

Page 22

BID NO.: 50-00126978

SEALED BID

ITEM NUMBER	QUANTITY	U/M	DESCRIPTION OF ARTICLES	UNIT PRICE QUOTED	TOTALS
139	1.00	ONLY	(PROTECTO 401 CERAMIC INTERIOR LINING) 12 INCH BY 6 INCH (09107) A Group 24 2030 FLANGED JOINT, CONCENTRIC REDUCERS	559.00	559.00
140	1.00	ONLY	(PROTECTO 401 CERAMIC INTERIOR LINING) 12 INCH BY 8 INCH (09108) A Group 24 2040 FLANGED JOINT, CONCENTRIC REDUCERS	605.00	605.00
141	1.00	ONLY	(PROTECTO 401 CERAMIC INTERIOR LINING) 12 INCH BY 10 INCH (09109) A Group 24 2050 FLANGED JOINT, CONCENTRIC REDUCERS	597.00	597.00
142	1.00	ONLY	(PROTECTO 401 CERAMIC INTERIOR LINING) 14 INCH BY 8 INCH (09110) A Group 24 2060 FLANGED JOINT, CONCENTRIC REDUCERS	649.00	649.00
143	1.00	ONLY	(PROTECTO 401 CERAMIC INTERIOR LINING) 14 INCH BY 10 INCH (09111) A Group 24 2070 FLANGED JOINT, CONCENTRIC REDUCERS	869.00	869.00
144	1.00	ONLY	(PROTECTO 401 CERAMIC INTERIOR LINING) 16 INCH BY 12 INCH (09112) A Group 24 2080 FLANGED JOINT, CONCENTRIC REDUCERS	749.58	749.58
145	1.00	ONLY	(PROTECTO 401 CERAMIC INTERIOR LINING) 16 INCH BY 10 INCH (09114) A Group 24 2090 FLANGED JOINT, TEES (PROTECTO 401 CERAMIC INTERIOR LINING)	289.04	289.04

INVITATION TO BID FROM JEFFERSON PARISH - continued

BID NO.: 50-00126978

SEALED BID

ITEM NUMBER	QUANTITY	U/M	DESCRIPTION OF ARTICLES	UNIT PRICE QUOTED	TOTALS
146	1.00	ONLY	4 INCH BY 4 INCH BY 4 INCH (10101)A Group 25	340 ⁰⁰ ==	340 ⁰⁰ ==
147	1.00	ONLY	2095 FLANGED JOINT, TEES (PROTECTO 401 CERAMIC INTERIOR LINING) 4 INCH BY 4 INCH BY 6 INCH (10102A) Group 25	398.56	398.56
148	1.00	ONLY	2100 FLANGED JOINT, TEES (PROTECTO 401 CERAMIC INTERIOR LINING) 6 INCH BY 6 INCH BY 4 INCH (10103) A Group 25	365 ⁰⁰ ==	365 ⁰⁰ ==
149	1.00	ONLY	2110 FLANGED JOINT, TEES (PROTECTO 401 CERAMIC INTERIOR LINING) 6 INCH BY 6 INCH BY 6 INCH (10104) A Group 25	450 ⁰⁰ ==	450 ⁰⁰ ==
150	1.00	ONLY	2120 FLANGED JOINT, TEES (PROTECTO 401 CERAMIC INTERIOR LINING) 8 INCH BY 8 INCH BY 6 INCH (10105) A Group 25	480 ⁰⁰ ==	480 ⁰⁰ ==
151	1.00	ONLY	2130 FLANGED JOINT, TEES (PROTECTO 401 CERAMIC INTERIOR LINING) 8 INCH BY 8 INCH BY 8 INCH (10106) A Group 25	604 ⁰⁰ ==	604 ⁰⁰ ==
152	1.00	ONLY	2140 FLANGED JOINT, TEES (PROTECTO 401 CERAMIC INTERIOR LINING) 10 INCH BY 10 INCH BY 6 INCH (10108) A Group 25	685 ⁰⁰ ==	685 ⁰⁰ ==

INVITATION TO BID FROM JEFFERSON PARISH - continued

BID NO.: 50-00126978

SEALED BID

ITEM NUMBER	QUANTITY	U/M	DESCRIPTION OF ARTICLES	UNIT PRICE QUOTED	TOTALS
153	1.00	ONLY	2160 FLANGED JOINT, TEES (PROTECTO 401 CERAMIC INTERIOR LINING) 12 INCH BY 12 INCH BY 6 INCH (10112) A Group 25	830 ⁰⁰ =	830 ⁰⁰ =
154	1.00	ONLY	2170 FLANGED JOINT, TEES (PROTECTO 401 CERAMIC INTERIOR LINING) 12 INCH BY 12 INCH BY 8 INCH (10113) A Group 25	862 ⁰⁰ =	862 ⁰⁰ =
155	1.00	ONLY	2180 FLANGED JOINT, TEES (PROTECTO 401 CERAMIC INTERIOR LINING) 12 INCH BY 12 INCH BY 12 INCH (10115) A Group 25	1095 ⁰⁰ =	1095 ⁰⁰ =
156	1.00	ONLY	2190 FLANGED JOINT, TEES (PROTECTO 401 CERAMIC INTERIOR LINING) 14 INCH BY 14 INCH BY 6 INCH (10117) A Group 25	900 ⁰⁰ =	900 ⁰⁰ =
157	1.00	ONLY	2200 FLANGED JOINT, TEES (PROTECTO 401 CERAMIC INTERIOR LINING) 14 INCH BY 14 INCH BY 10 INCH (10119) A Group 25	1000 ⁰⁰ =	1000 ⁰⁰ =
158	1.00	ONLY	2210 FLANGED JOINT, TEES (PROTECTO 401 CERAMIC INTERIOR LINING) 16 INCH BY 16 INCH BY 16 INCH (10121) A Group 25	1390 ⁰⁰ =	1390 ⁰⁰ =
159	1.00	ONLY	2220 FLANGED JOINT, TRUE WYES (PROTECTO 401 CERAMIC INTERIOR LINING) 4 INCH (10802) A Group 26	204 ⁰⁰ =	204 ⁰⁰ =
160	1.00	ONLY	2230 MECHANICAL JOINT, 11-1/4 DEGREE BEND	104 ⁰⁰ =	104 ⁰⁰ =

DATE: 6/26/2019

INVITATION TO BID FROM JEFFERSON PARISH - continued

Page 25

BID NO.: 50-00126978

SEALED BID

ITEM NUMBER	QUANTITY	U/M	DESCRIPTION OF ARTICLES	UNIT PRICE QUOTED	TOTALS
161	1.00	ONLY	PROTECTO 401 CERAMIC INTERIOR LINING) 4 INCH Group 27 2240 MECHANICAL JOINT, 11-1/4 DEGREE BEND (PROTECTO 401 CERAMIC INTERIOR LINING) 6 INCH Group 27	159 ⁰⁰ —	159 ⁰⁰ —
162	1.00	ONLY	2250 MECHANICAL JOINT, 22-1/2 DEGREE BEND (PROTECTO 401 CERAMIC INTERIOR LINING) 4 INCH Group 28	107. ⁰⁰ —	107. ⁰⁰ —
163	1.00	ONLY	2260 MECHANICAL JOINT, 22-1/2 DEGREE BEND (PROTECTO 401 CERAMIC INTERIOR LINING) 6 INCH Group 28	165 ⁰⁰ —	165 ⁰⁰ —
164	1.00	ONLY	2270 MECHANICAL JOINT, 22-1/2 DEGREE BEND (PROTECTO 401 CERAMIC INTERIOR LINING) 8 INCH Group 28	224. ⁰⁰ —	224. ⁰⁰ —
165	1.00	ONLY	2280 MECHANICAL JOINT, 22-1/2 DEGREE BEND (PROTECTO 401 CERAMIC INTERIOR LINING) 10 INCH Group 28	290. ⁰⁰ —	290. ⁰⁰ —
166	1.00	ONLY	2290 MECHANICAL JOINT, 22-1/2 DEGREE BEND (PROTECTO 401 CERAMIC INTERIOR LINING) 12 INCH Group 28	390. ⁰⁰ —	390. ⁰⁰ —
167	1.00	ONLY	2300 MECHANICAL JOINT, 22-1/2 DEGREE BEND	475. ⁰⁰ —	475. ⁰⁰ —

INVITATION TO BID FROM JEFFERSON PARISH - continued

BID NO.: 50-00126978

SEALED BID

ITEM NUMBER	QUANTITY	U/M	DESCRIPTION OF ARTICLES	UNIT PRICE QUOTED	TOTALS
168	1.00	ONLY	(PROTECTO 401 CERAMIC INTERIOR LINING) 14 INCH Group 28	121.00	121.00
169	1.00	ONLY	2310 MECHANICAL JOINT, 45 DEGREE BEND (PROTECTO 401 CERAMIC INTERIOR LINING) 4 INCH Group 29	198.00	198.00
170	1.00	ONLY	2320 MECHANICAL JOINT, 45 DEGREE BEND (PROTECTO 401 CERAMIC INTERIOR LINING) 6 INCH Group 29	248.00	248.00
171	1.00	ONLY	2330 MECHANICAL JOINT, 45 DEGREE BEND (PROTECTO 401 CERAMIC INTERIOR LINING) 8 INCH Group 29	329.00	329.00
172	1.00	ONLY	2340 MECHANICAL JOINT, 45 DEGREE BEND (PROTECTO 401 CERAMIC INTERIOR LINING) 10 INCH Group 29	398.00	398.00
173	1.00	ONLY	2350 MECHANICAL JOINT, 45 DEGREE BEND (PROTECTO 401 CERAMIC INTERIOR LINING) 12 INCH Group 29	462.00	462.00
174	1.00	ONLY	2360 MECHANICAL JOINT, 45 DEGREE BEND (PROTECTO 401 A CERAMIC INTERIOR LINING) 14 INCH Group 29	118.00	118.00
			2370 MECHANICAL JOINT, 90 DEGREE BEND (PROTECTO 401 A CERAMIC INTERIOR LINING) 4 INCH Group 30		

INVITATION TO BID FROM JEFFERSON PARISH - continued

BID NO.: 50-00126978

SEALED BID

ITEM NUMBER	QUANTITY	U/M	DESCRIPTION OF ARTICLES	UNIT PRICE QUOTED	TOTALS
175	1.00	ONLY	2380 MECHANICAL JOINT, 90 DEGREE BEND (PROTECTO 401A CERAMIC INTERIOR LINING) 6 INCH Group 30	257 ⁰⁰ =	257 ⁰⁰ =
176	1.00	ONLY	2390 MECHANICAL JOINT, 90 DEGREE BEND (PROTECTO 401A CERAMIC INTERIOR LINING) 8 INCH Group 30	253 ⁰⁰ =	253 ⁰⁰ =
177	1.00	ONLY	2400 MECHANICAL JOINT, 90 DEGREE BEND (PROTECTO 401A CERAMIC INTERIOR LINING) 10 INCH Group 30	307 ⁰⁰ =	307 ⁰⁰ =
178	1.00	ONLY	2410 MECHANICAL JOINT, 90 DEGREE BEND (PROTECTO 401A CERAMIC INTERIOR LINING) 12 INCH Group 30	455 ⁰⁰ =	455 ⁰⁰ =
179	1.00	ONLY	2420 MECHANICAL JOINT, 90 DEGREE BEND PROTECTO 401A CERAMIC INTERIOR LINING) 14 INCH Group 30	590 ⁰⁰ =	590 ⁰⁰ =
180	1.00	ONLY	2430 MECHANICAL JOINT, CROSSES (PROTECTO 401A CERAMIC INTERIOR LINING) 4 INCH BY 4 INCH Group 31	210 ⁰⁰ =	210 ⁰⁰ =
181	1.00	ONLY	2440 MECHANICAL JOINT, CROSSES (PROTECTO 401A CERAMIC INTERIOR LINING) 6 INCH BY 6 INCH Group 31	280 ⁰⁰ =	280 ⁰⁰ =
182	1.00	ONLY	2450 MECHANICAL JOINT, CROSSES (PROTECTO 401A CERAMIC INTERIOR LINING) 8 INCH BY 8 INCH	305 ⁰⁰ =	305 ⁰⁰ =

INVITATION TO BID FROM JEFFERSON PARISH - continued

BID NO.: 50-00126978

SEALED BID

ITEM NUMBER	QUANTITY	U/M	DESCRIPTION OF ARTICLES	UNIT PRICE QUOTED	TOTALS
183	1.00	ONLY	Group 31 2460 MECHANICAL JOINT, CROSSES (PROTECTO 401a CERAMIC INTERIOR LINING) 10 INCH BY 10 INCH Group 31	390.00	390.00
184	1.00	ONLY	2470 MECHANICAL JOINT, CROSSES (PROTECTO 401A CERAMIC INTERIOR LINING) 12 INCH BY 12 INCH Group 31	700.00	700.00
185	1.00	ONLY	2480 MECHANICAL JOINT, CROSSES (PROTECTO 401A CERAMIC INTERIOR LINING) 12 INCH BY 6 INCH Group 31	490.00	490.00
186	1.00	ONLY	2490 MECHANICAL JOINT, CONCENTRIC REDUCER (PROTECTO 401A CERAMIC INTERIOR LINING) 4 INCH BY 3 INCH Group 32	148.00	148.00
187	1.00	ONLY	2500 MECHANICAL JOINT, CONCENTRIC REDUCER (PROTECTO 401 CERAMIC INTERIOR LINING) 6 INCH BY 3 INCH Group 32	130.00	130.00
188	1.00	ONLY	2510 MECHANICAL JOINT, CONCENTRIC REDUCER (PROTECTO 401A CERAMIC INTERIOR LINING) 6 INCH BY 4 INCH Group 32	176.56	176.56
189	1.00	ONLY	2520 MECHANICAL JOINT, CONCENTRIC REDUCER (PROTECTO 401A CERAMIC INTERIOR LINING) 8 INCH BY 6 INCH Group 32	219.00	219.00

INVITATION TO BID FROM JEFFERSON PARISH - continued

BID NO.: 50-00126978

SEALED BID

ITEM NUMBER	QUANTITY	U/M	DESCRIPTION OF ARTICLES	UNIT PRICE QUOTED	TOTALS
190	1.00	ONLY	2530 MECHANICAL JOINT, CONCENTRIC REDUCER (PROTECTO 401ACERAMIC INTERIOR LINING) 10 INCH BY 6 INCH Group 32	239 ⁰⁰	239 ⁰⁰
191	1.00	ONLY	2540 MECHANICAL JOINT, CONCENTRIC REDUCER (PROTECTO 401ACERAMIC INTERIOR LINING) 10 INCH BY 8 INCH Group 32	255 ⁰⁰	255 ⁰⁰
192	1.00	ONLY	2550 MECHANICAL JOINT, CONCENTRIC REDUCER (PROTECTO 401ACERAMIC INTERIOR LINING) 12 INCH BY 6 INCH Group 32	318 ⁰⁰	318 ⁰⁰
193	1.00	ONLY	2560 MECHANICAL JOINT, CONCENTRIC REDUCER (PROTECTO 401ACERAMIC INTERIOR LINING) 12 INCH BY 8 INCH Group 32	320 ⁰⁰	320 ⁰⁰
194	1.00	ONLY	2570 MECHANICAL JOINT, CONCENTRIC REDUCER (PROTECTO 401ACERAMIC INTERIOR LINING) 12 INCH BY 10 INCH Group 32	335 ⁰⁰	335 ⁰⁰
195	1.00	ONLY	2580 MECHANICAL JOINT, CONCENTRIC REDUCER (PROTECTO 401ACERAMIC INTERIOR LINING) 14 INCH BY 8 INCH Group 32	470 ⁰⁰	470 ⁰⁰
196	1.00	ONLY	2590 MECHANICAL JOINT, TEES (PROTECTO 401ACERAMIC INTERIOR LINING) 4 INCH BY 4 INCH BY 4 INCH Group 33	190 ⁰⁰	190 ⁰⁰

INVITATION TO BID FROM JEFFERSON PARISH - continued

BID NO.: 50-00126978

SEALED BID

ITEM NUMBER	QUANTITY	U/M	DESCRIPTION OF ARTICLES	UNIT PRICE QUOTED	TOTALS
197	1.00	ONLY	2600 MECHANICAL JOINT, TEES (PROTECTO 401A CERAMIC INTERIOR LINING) 6 INCH BY 6 INCH BY 4 INCH Group 33	211 ⁰⁰	211 ⁰⁰
198	1.00	ONLY	2610 MECHANICAL JOINT, TEES (PROTECTO 401A CERAMIC INTERIOR LINING) 6 INCH BY 6 INCH BY 6 INCH Group 33	238 ⁰⁰	238 ⁰⁰
199	1.00	ONLY	2620 MECHANICAL JOINT, TEES (PROTECTO 401A CERAMIC INTERIOR LINING) 8 INCH BY 8 INCH BY 6 INCH Group 33	310 ⁰⁰	310 ⁰⁰
200	1.00	ONLY	2630 MECHANICAL JOINT, TEES (PROTECTO 401A CERAMIC INTERIOR LINING) 8 INCH BY 8 INCH BY 8 INCH Group 33	315 ⁰⁰	315 ⁰⁰
201	1.00	ONLY	2640 MECHANICAL JOINT, TEES (PROTECTO 401A CERAMIC INTERIOR LINING) 10 INCH BY 10 INCH BY 6 INCH Group 33	339 ⁰⁰	339 ⁰⁰
202	1.00	ONLY	2650 MECHANICAL JOINT, TEES (PROTECTO 401A CERAMIC INTERIOR LINING) 10 INCH BY 10 INCH BY 10 INCH Group 33	375 ⁰⁰	375 ⁰⁰
203	1.00	ONLY	2660 MECHANICAL JOINT, TEES (PROTECTO 401A CERAMIC INTERIOR LINING) 12 INCH BY 12 INCH BY 6 INCH Group 33	440 ⁰⁰	440 ⁰⁰
204	1.00	ONLY	2670 MECHANICAL JOINT, TEES (PROTECTO 401A CERAMIC INTERIOR LINING)	480 ⁰⁰	480 ⁰⁰

BID NO.: 50-00126978

SEALED BID

ITEM NUMBER	QUANTITY	U/M	DESCRIPTION OF ARTICLES	UNIT PRICE QUOTED	TOTALS
205	1.00	ONLY	LINING) 12 INCH BY 12 INCH BY 8 INCH Group 33 2680 MECHANICAL JOINT, TEES (PROTECTO 401 A CERAMIC INTERIOR LINING)	555 ⁰⁰ —	555 ⁰⁰ —
206	1.00	ONLY	12 INCH BY 12 INCH BY 12 INCH Group 33 2690 MECHANICAL JOINT, TEES (PROTECTO 401A CERAMIC INTERIOR LINING)	433 ⁰⁰ —	433 ⁰⁰ —
207	1.00	ONLY	14 INCH BY 14 INCH BY 6 INCH Group 33 2700 MECHANICAL JOINT, TEES (PROTECTO 401 A CERAMIC INTERIOR LINING)	590 ⁰⁰ —	590 ⁰⁰ —
208	1.00	ONLY	14 INCH BY 14 INCH BY 10 INCH Group 33 2710 - FLANGE JOINT, TEE, 4 IN X 4 IN X 4 IN, DUCTILE IRON, FLANGED, FUSION EPOXY COATED, NO ACCESSORIES, MUST HAVE AWWA, ASTM, OR ANSI APPROVAL AND WRITTEN PROOF OF ISO9001 CERTIFICATION (10102B)	230 ⁰⁰ —	230 ⁰⁰ —
209	1.00	ONLY	2720 - FLANGE JOINT, TEE, 6 INCH X 6 INCH X 4 INCH, DUCTILE IRON, FLANGED, FUSION EPOXY COATED, NO ACCESSORIES, MUST HAVE AWWA, ASTM, OR ANSI APPROVAL AND WRITTEN PROOF OF ISO9001 CERTIFICATION (101030)	198 ⁰⁰ —	198 ⁰⁰ —
210	1.00	ONLY	2730 - FLANGED JOINT, TEE 6 IN X 6 IN X 6 IN, DUCTILE IRON, FLANGED, FUSION EPOXY COATED, WITHOUT ACCESSORIES, MUST HAVE AWWA, ASTM, OR ANSI APPROVAL AND WRITTEN PROOF OF ISO9001 CERTIFICATION (101040)	225 ⁰⁰ —	225 ⁰⁰ —
211	1.00	ONLY	2740 - FLANGE JOINT, TEE, 8 INCH X 8 INCH X 6 INCH, DUCTILE IRON, FLANGED, FUSION EPOXY COATED, NO ACCESSORIES, MEETS AWWA,	275 ⁰⁰ —	275 ⁰⁰ —

INVITATION TO BID FROM JEFFERSON PARISH - continued

BID NO.: 50-00125978

SEALED BID

ITEM NUMBER	QUANTITY	U/M	DESCRIPTION OF ARTICLES	UNIT PRICE QUOTED	TOTALS
212	1.00	ONLY	ASTM, OR ANSI APPROVAL AND WRITTEN PROOF OF ISO 9000 CERTIFICATION (101050) 2750 - FLANGED JOINT, TEE, 8 INCH X 8 INCH X 8 INCH, DUCTILE IRON, FLANGED, FUSION EPOXY COATED IN, NO ACCESSORIES, MEETS AWWA, ASTM, OR ANSI AND WRITTEN PROOF OF ISO 9000 CERTIFICATION. (101060)	330 ⁰⁰ =	330 ⁰⁰ =
213	1.00	ONLY	2780 - FLANGED JOINT, TEE, 12 IN X 12 IN DUCTILE IRON, FLANGED, FUSION EPOXY COATED WITHOUT ACCESSORIES, MUST HAVE AWWA, ASTM OR ANSI APPROVAL AND WRITTEN PROOF OF ISO 9001 CERTIFICATION (101150)	600 ⁰⁰ =	600 ⁰⁰ =
214	1.00	ONLY	2790 - REDUCER, CONCENTRIC, 4 IN X 3 IN, DUCTILE IRON, FLANGED, FUSION EPOXY COATED, WITHOUT ACCESSORIES. 00-0091010	690 ⁰⁰ =	690 ⁰⁰ =
215	1.00	ONLY	2800 - PLUG, 6 IN, DUCTILE IRON, MECH JOINT, WITH 2 IN FEMALE PIPE THREAD TAP IN CENTER, EPOXY COATED IN AND OUT. 00-009002A	540 ⁰⁰ =	540 ⁰⁰ =
216	1.00	ONLY	2810 - PLUG, 8 IN, DUCTILE IRON, MECH JOINT, WITH 2 IN FEMALE PIPE THREAD TAP IN CENTER, EPOXY COATED IN AND OUT. 00-009003A	93 ⁰⁰ =	93 ⁰⁰ =
217	1.00	ONLY	2820 - PLUG, 12 IN DUCTILE IRON, MECH JOINT WITH 2 IN FEMALE PIPE THREAD TAP IN CENTER, EPOXY COATED IN AND OUT, DOMESTIC, NO ACCESSORIES 00-009005A	105 ⁰⁰ =	105 ⁰⁰ =
218	1.00	ONLY	2830 - REDUCER, CONCENTRIC, 6 IN X 4 IN, DUCTILE IRON, FLANGED, FUSION EPOXY COATED, WITHOUT ACCESSORIES 00-0091030	85 ⁰⁰ =	85 ⁰⁰ =
219	1.00	ONLY	2840 - REDUCER, CONCENTRIC, 8 IN X 6 IN, DUCTILE IRON, FLANGED EPOXY COATED IN	135 ⁰⁰ =	135 ⁰⁰ =

INVITATION TO BID FROM JEFFERSON PARISH - continued

BID NO.: 50-00126978

SEALED BID

ITEM NUMBER	QUANTITY	U/M	DESCRIPTION OF ARTICLES	UNIT PRICE QUOTED	TOTALS
220	1.00	ONLY	AND OUT DOMESTIC, MEETS AWWA 00-0091040 2850 - REDUCER, CONCENTRIC, 12 IN X 8 IN, DUCTILE IRON, FLANGED, FUSION EPOXY COATED, WITHOUT ACCESSORIES. 00-0091080	285.00	285.00
221	1.00	ONLY	2860 - BEND, 45 DEGREE, 6 INCH, DUCTILE IRON, FLANGED, FUSION EPOXY COATED WITHOUT ACCESSORIES 00-006152	202.00	202.00
222	1.00	ONLY	2870 - BEND, 90 DEGREE, 3 INCH, DUCTILE IRON, FLANGED, FUSION EPOXY COATED, WITHOUT ACCESSORIES 00-006175	178.00	178.00

Ductile Iron Fittings Contract

(Ductile Iron Fittings and Price Brothers' Pipe Adapter Kits)

ITEMS INCLUDED IN THIS CONTRACT:

- GROUP 1. Mechanical Joint Repair Sleeves (Lines 0010 thru 0280)
- GROUP 2. Mechanical Joint 90° Bends (Lines 0290 thru 0400)
- GROUP 3. Mechanical Joint x Flange 90° Bends (Lines 0410 thru 0460)
- GROUP 4. Mechanical Joint 45° Bends (Lines 0470 thru 0580)
- GROUP 5. Mechanical Joint x Flange 45° Bends (Lines 0600 thru 0630)
- GROUP 6. Mechanical Joint 22-½° Bends (Lines 0640 thru 0730)
- GROUP 7. Mechanical Joint 11-¼° Bends (Lines 0750 thru 0780)
- GROUP 8. Mechanical Joint Tees (Lines 0790 thru 0920)
- GROUP 9. Mechanical Joint x Flange Tees (Lines 0970 thru 1025)
- GROUP 10. Mechanical Joint Swivel Tees (Lines 1040 thru 1110)
- GROUP 11. Mechanical Joint Crosses (Lines 1130 thru 1150)
- GROUP 12. Mechanical Joint Concentric Reducers (Lines 1160 thru 1250)
- GROUP 13. Mechanical Joint x Flange Adapters (Lines 1270 thru 1290)
- GROUP 14. Mechanical Joint Caps (Lines 1310 thru 1330)
- GROUP 15. Mechanical Joint Plugs (Lines 1380 thru 1420)
- GROUP 16. Mechanical Joint Offsets (Lines 1470 thru 1480)
- GROUP 17. Price Brothers Adapter Kits (Lines 1500 thru 1570)
- GROUP 18. ~~Flanged Joint, 11-¼° Bend (Protecto 401 Ceramic Interior Lining) (Lines 1580 thru 1590) Not Used~~
- GROUP 19. ~~Flanged Joint, 22-½° Bend (Protecto 401 Ceramic Interior Lining) (Lines 1600 thru 1660) Not Used~~
- GROUP 20. Flanged Joint, 45° Bend (Protecto 401 Ceramic Interior Lining) (Lines 1710 thru 1715 and Line 2860)
- GROUP 21. Flanged Joint, 90° Bend (Protecto 401 Ceramic Interior Lining) (Lines 1770 thru 1820 and Line 2870)
- GROUP 22. Flanged Joint, 90° Bend, Reducing (Protecto 401 Ceramic Interior Lining) (Lines 1870 thru 1880)
- GROUP 23. Flanged Joint, Crosses (Protecto 401 Ceramic Interior Lining) (Lines 1890 thru 1950)
- GROUP 24. Flanged Joint, Concentric Reducers (Protecto 401 Ceramic Interior Lining) (Lines 1960 thru 2080)
- GROUP 25. Flanged Joint, Tees (Protecto 401 Ceramic Interior Lining) (Lines 2090 thru 2210)
- GROUP 26. Flanged Joint, True Wyes (Protecto 401 Ceramic Interior Lining) (Line 2220)
- GROUP 27. Mechanical Joint, 11-¼° Bend (Protecto 401 Ceramic Interior Lining) (Lines 2230 thru 2240)
- GROUP 28. Mechanical Joint, 22-½° Bend (Protecto 401 Ceramic Interior Lining) (Lines 2250 thru 2300)
- GROUP 29. Mechanical Joint, 45° Bend (Protecto 401 Ceramic Interior Lining) (Lines 2310 thru 2360)

- GROUP 30. Mechanical Joint, 90° Bend (Protecto 401 Ceramic Interior Lining) (Lines 2370 thru 2420)
- GROUP 31. Mechanical Joint, Crosses (Protecto 401 Ceramic Interior Lining) (Lines 2430 thru 2480)
- GROUP 32. Mechanical Joint, Concentric Reducers (Protecto 401 Ceramic Interior Lining) (Lines 2490 thru 2580)
- GROUP 33. Mechanical Joint, Tees (Protecto 401 Ceramic Interior Lining) (Lines 2590 thru 2700)
- GROUP 34. Flange Joint, Tees (Protecto 401 Ceramic Lining) (Lines 2710 thru 2780)
- GROUP 35. Flange Joint, Concentric Reducer (Protecto 401 Ceramic Lining) (Line 2790 and Lines 2830 thru 2850)
- GROUP 36. Mechanical Joint, Plugs (Protecto 401 Ceramic Lining) (Lines 2800 thru 2820)

***** Note: This contract may be awarded accordingly to the low bidder of each group mentioned above. *****

Contract Terms:

This is a one year contract for supply of Ductile Iron Fittings and Adapter Kits for Price Brothers pipe for the Department of Public Works, Waterworks, and all Jefferson Parish agencies and municipalities.

Warranty:

Products shall be warranted that they are manufactured in accordance with the applicable material specifications and are free from defects in workmanship and materials for one year after delivery. Any defective items sold under this contract shall be replaced at no cost to the purchaser.

General Specifications:

This specification is prepared for a one (1) year contract for a supply of Ductile Iron Fittings and Adapter Kits for Price Brothers pipe for the Parish of Jefferson, Department of Water, East and Westbank.

The quantities shown on the proposal guide are approximate quantities to be acquired by Jefferson Parish over a one (1) year period. Actual usage will be on an "as needed" basis.

Domestic as well as globally sourced (foreign) ductile iron fittings shall be allowed. All globally sourced (foreign) fittings shall also be manufactured at an ISO (International Organization for Standardization) registered manufacturer, which manufacturer shall have current ISO 9001 certification for standardization for fitting products. These manufacturing facilities must be covered under periodic audits by third party accreditation bodies for evaluations. These evaluations shall include manufacturing processes, quality control, corrective and preventive actions, and document control. In addition, distribution centers must be audited by third party approval agencies for periodic confirmation tests and surveillance audits. These periodic confirmation tests and surveillance audits shall document continuation of product approvals by auditing the entire quality systems including design, infrastructure, system implementation,

distribution, training, quality control and assurance, and document control. All fittings must be manufactured in accordance with NSF 61.

All technical literature containing the brand and part numbers that your company is bidding on must be submitted with the bid.

The manufacturer's name and the country of origin must be stamped on all fittings.

Bid delivery shall include all freight and delivery costs to Jefferson Parish warehouse locations on the East and West Banks of Jefferson Parish.

Technical Specifications:

I. Ductile Iron Fittings:

Fittings shall be available in 3" through 48" sizes and shall be cast from ductile iron in accordance with ANSI/AWWA C110/A21.10 and ANSI/AWWA C111/A21.11. Compact fittings shall be available in 3" through 24" and shall be cast from ductile iron in accordance with ANSI/AWWA C153/A21.53. All fittings shall have working pressure rating of 350 psi.

Ductile iron fittings shall have factory applied fusion bonded epoxy coating inside and out, in accordance with all applicable provisions of AWWA C-550 and ANSI/AWWA C116/A21.16-98 (protective fusion-bonded epoxy coatings for the interior and exterior surfaces of ductile iron fittings for water supply services).

II. Adapter Kits For Price Brothers Pipe (16" - 48"):

The purpose of these adapter kits is to connect Price Brothers pipe (Prestressed Concrete Cylinder Pipe, or PCCP) to valves, PVC C-900 or ductile iron pipe. Each kit shall include the following for each size:

- A) One each, price brother bell x mechanical joint spigot, minimum 18" long.
- B) One each, price brother spigot x mechanical joint spigot, minimum 18" long.
- C) Two each, PCCP O-ring gaskets.
- D) Two each, PCCP diaper (grout bands).

III. Ductile Iron Fittings (Protecto 401 Interior Lining):

Fittings shall be available in 3" through 48" sizes and shall be cast from ductile iron in accordance with ANSI/AWWA C110/A21.10 and ANSI/AWWA C111/A21.11. Compact fittings shall be available in 3" through 24" and shall be cast from ductile iron in accordance with ANSI/AWWA C153/A21.53. All fittings shall have working pressure rating of 350 psi.

Ductile iron fittings shall have a factory applied interior coating/lining of "Protecto 401" ceramic epoxy lining as per manufacturer's recommendations and requirements for sanitary sewer applications and factory asphaltic exterior coating.

Non-Public Works Bid

AFFIDAVIT

STATE OF LOUISIANA

PARISH/COUNTY OF Jefferson

BEFORE ME, the undersigned authority, personally came and appeared: Arvon

Rooney, (Affiant) who after being by me duly sworn, deposed and said that

he/she is the fully authorized AGENT of Cimseo Inc. (Entity),

the party who submitted a bid in response to Bid Number 50-0012-0978, to the Parish of

Jefferson.

Affiant further said:

Campaign Contribution Disclosures

(Choose A or B, if option A is indicated please include the required attachment):

Choice A _____

Attached hereto is a list of all campaign contributions, including the date and amount of each contribution, made to current or former elected officials of the Parish of Jefferson by Entity, Affiant, and/or officers, directors and owners, including employees, owning 25% or more of the Entity during the two-year period immediately preceding the date of this affidavit or the current term of the elected official, whichever is greater. Further, Entity, Affiant, and/or Entity Owners have not made any contributions to or in support of current or former members of the Jefferson Parish Council or the Jefferson Parish President through or in the name of another person or legal entity, either directly or indirectly.

Choice B _____

there are **NO** campaign contributions made which would require disclosure under Choice A of this section.

Debt Disclosures

(Choose A or B, if option A is indicated please include the required attachment):

Choice A _____

Attached hereto is a list of all debts owed by the affiant to any elected or appointed official of the Parish of Jefferson, and any and all debts owed by any elected or appointed official of the Parish to the Affiant.

Choice B _____

✓

There are NO debts which would require disclosure under Choice A of this section.

Affiant further said:

That Affiant has employed no person, corporation, firm, association, or other organization, either directly or indirectly, to secure the public contract under which he received payment, other than persons regularly employed by the Affiant whose services in connection with the construction, alteration or demolition of the public building or project or in securing the public contract were in the regular course of their duties for Affiant; and

[The remainder of this page is intentionally left blank.]

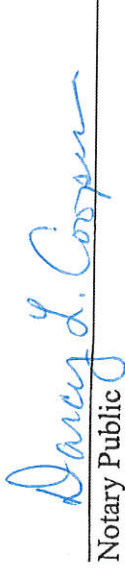
That no part of the contract price received by Affiant was paid or will be paid to any person, corporation, firm, association, or other organization for soliciting the contract, other than the payment of their normal compensation to persons regularly employed by the Affiant whose services in connection with the construction, alteration or demolition of the public building or project were in the regular course of their duties for Affiant.


Signature of Affiant

AARON ROONEY
Printed Name of Affiant

SWORN AND SUBSCRIBED TO BEFORE ME

ON THE 10th DAY OF July, 2019.


Notary Public

Darcy L. Cooper
Notary Public ID #87529
Printed Name of Notary Louisiana Statewide Jurisdiction
My Commission is for Life

Notary/Bar Roll Number _____

My commission expires _____.

CORPORATE RESOLUTION

EXCERPT FROM MINUTES OF MEETING OF THE BOARD OF DIRECTORS OF
CIMSCO, INC.
INCORPORATED.

AT THE MEETING OF DIRECTORS OF CIMSCO, INC.
INCORPORATED, DULY NOTICED AND HELD ON February 5, 2019,
A QUORUM BEING THERE PRESENT, ON MOTION DULY MADE AND SECONDED. IT
WAS:

RESOLVED THAT Aaron Rooney, BE AND IS HEREBY
APPOINTED, CONSTITUTED AND DESIGNATED AS AGENT AND ATTORNEY-IN-
FACT OF THE CORPORATION WITH FULL POWER AND AUTHORITY TO ACT ON
BEHALF OF THIS CORPORATION IN ALL NEGOTIATIONS, BIDDING, CONCERNS
AND TRANSACTIONS WITH THE PARISH OF JEFFERSON OR ANY OF ITS AGENCIES,
DEPARTMENTS, EMPLOYEES OR AGENTS, INCLUDING BUT NOT LIMITED TO, THE
EXECUTION OF ALL BIDS, PAPERS, DOCUMENTS, AFFIDAVITS, BONDS, SURETIES,
CONTRACTS AND ACTS AND TO RECEIVE ALL PURCHASE ORDERS AND NOTICES
ISSUED PURSUANT TO THE PROVISIONS OF ANY SUCH BID OR CONTRACT, THIS
CORPORATION HEREBY RATIFYING, APPROVING, CONFIRMING, AND ACCEPTING
EACH AND EVERY SUCH ACT PERFORMED BY SAID AGENT AND ATTORNEY-IN-
FACT.

I HEREBY CERTIFY THE FOREGOING TO BE
A TRUE AND CORRECT COPY OF AN
EXCERPT OF THE MINUTES OF THE ABOVE
DATED MEETING OF THE BOARD OF
DIRECTORS OF SAID CORPORATION, AND
THE SAME HAS NOT BEEN REVOKED OR
RESCINDED.

Ashley Ruane

SECRETARY-TREASURER

7/10/19
DATE



CERTIFICATE OF LIABILITY INSURANCE

DATE (MM/DD/YYYY)
8/28/2018

THIS CERTIFICATE IS ISSUED AS A MATTER OF INFORMATION ONLY AND CONFERS NO RIGHTS UPON THE CERTIFICATE HOLDER. THIS CERTIFICATE DOES NOT AFFIRMATIVELY OR NEGATIVELY AMEND, EXTEND OR ALTER THE COVERAGE AFFORDED BY THE POLICIES BELOW. THIS CERTIFICATE OF INSURANCE DOES NOT CONSTITUTE A CONTRACT BETWEEN THE ISSUING INSURER(S), AUTHORIZED REPRESENTATIVE OR PRODUCER, AND THE CERTIFICATE HOLDER.

IMPORTANT: If the certificate holder is an ADDITIONAL INSURED, the policy(ies) must be endorsed. If SUBROGATION IS WAIVED, subject to the terms and conditions of the policy, certain policies may require an endorsement. A statement on this certificate does not confer rights to the certificate holder in lieu of such endorsement(s).

PRODUCER		CONTACT NAME: Darly Oser	
E B Ducasse Insurance Agency, Inc		PHONE (A/C No. Ext): (504) 840-9883	FAX (A/C No.): (504) 840-9889
3200 Ridgelake Dr, Suite 401		E-MAIL ADDRESS: doser@ebducasse.com	
Metairie LA 70002		INSURER(S) AFFORDING COVERAGE	
INSURED		INSURER A: United Fire and Indemnity Co	NAIC # 19496
CIMSCO INC		INSURER B: Technology Insurance Co	42376
1840 L AND A ROAD		INSURER C:	
		INSURER D:	
		INSURER E:	
METAIRIE LA 70001-6237		INSURER F:	

COVERAGES	CERTIFICATE NUMBER: 18-19	REVISION NUMBER:
------------------	----------------------------------	-------------------------

THIS IS TO CERTIFY THAT THE POLICIES OF INSURANCE LISTED BELOW HAVE BEEN ISSUED TO THE INSURED NAMED ABOVE FOR THE POLICY PERIOD INDICATED. NOTWITHSTANDING ANY REQUIREMENT, TERM OR CONDITION OF ANY CONTRACT OR OTHER DOCUMENT WITH RESPECT TO WHICH THIS CERTIFICATE MAY BE ISSUED OR MAY PERTAIN. THE INSURANCE AFFORDED BY THE POLICIES DESCRIBED HEREIN IS SUBJECT TO ALL THE TERMS, EXCLUSIONS AND CONDITIONS OF SUCH POLICIES. LIMITS SHOWN MAY HAVE BEEN REDUCED BY PAID CLAIMS.

INSR LTR	TYPE OF INSURANCE	ADDL INSD	SUBR INSD	POLICY NUMBER	POLICY EFF (MM/DD/YYYY)	POLICY EXP (MM/DD/YYYY)	LIMITS
A	<input checked="" type="checkbox"/> COMMERCIAL GENERAL LIABILITY						
	<input type="checkbox"/> CLAIMS-MADE <input checked="" type="checkbox"/> OCCUR			60418952	9/1/2018	9/1/2019	EACH OCCURRENCE \$ 1,000,000
							DAMAGE TO RENTED PREMISES (Ea occurrence) \$ 100,000
							MED EXP (Any one person) \$ 5,000
	GENTL AGGREGATE LIMIT APPLIES PER:						
	<input checked="" type="checkbox"/> POLICY <input type="checkbox"/> PRO-JECT <input type="checkbox"/> LOC						PERSONAL & ADV INJURY \$ 1,000,000
	OTHER:						GENERAL AGGREGATE \$ 2,000,000
							PRODUCTS - COMP/OP AGG \$ 2,000,000
A	AUTOMOBILE LIABILITY						Liquor Liability Exclusion \$
	<input checked="" type="checkbox"/> ANY AUTO						COMBINED SINGLE LIMIT (Ea accident) \$ 1,000,000
	<input type="checkbox"/> ALL OWNED AUTOS			60418952	9/1/2018	9/1/2019	BODILY INJURY (Per person) \$
	<input type="checkbox"/> HIRED AUTOS						BODILY INJURY (Per accident) \$
A	<input checked="" type="checkbox"/> UMBRELLA LIAB						PROPERTY DAMAGE (Per accident) \$
	<input type="checkbox"/> EXCESS LIAB						
	<input type="checkbox"/> RETENTION \$ 10,000			60418952	9/1/2018	9/1/2019	EACH OCCURRENCE \$ 1,000,000
							AGGREGATE \$ 1,000,000
B	WORKERS COMPENSATION AND EMPLOYERS' LIABILITY						
	ANY PROPRIETOR/PARTNER/EXECUTIVE OFFICER/ MEMBER EXCLUDED? (Mandatory in NH)		N/A				PER STATUTE <input type="checkbox"/> OTH-ER <input type="checkbox"/>
	If yes, describe under DESCRIPTION OF OPERATIONS below						E.L. EACH ACCIDENT \$ 1,000,000
							E.L. DISEASE - EA EMPLOYEE \$ 1,000,000
							E.L. DISEASE - POLICY LIMIT \$ 1,000,000

DESCRIPTION OF OPERATIONS / LOCATIONS / VEHICLES (ACORD 101, Additional Remarks Schedule, may be attached if more space is required)

The Parish of Jefferson, its districts, departments, and agencies under the direction of the Parish President and Parish Council are named as additional insured on the general liability and auto liability policies when required by written contract. The general liability and workers comp insurers will have no right of recovery or subrogation against the Parish of Jefferson, its Districts, Departments and Agencies under the direction of the Parish President and Parish Council, it being the intention of the parties that the General Liability and Workers Compensation policies described above shall protect both parties and be primary coverage for any and all losses covered by the described insurance.

CERTIFICATE HOLDER	CANCELLATION
The Parish of Jefferson, its Districts, Department & Agencies under the direction the Parish President & the Parish Council Department of Engineering 1221 Elmwood Park Blvd Ste 802 Jefferson, LA 70123	SHOULD ANY OF THE ABOVE DESCRIBED POLICIES BE CANCELLED BEFORE THE EXPIRATION DATE THEREOF, NOTICE WILL BE DELIVERED IN ACCORDANCE WITH THE POLICY PROVISIONS.
	AUTHORIZED REPRESENTATIVE
	E Ducasse Sr./WAYNE <i>Edward B. Ducasse Sr.</i>



Flanged Fittings

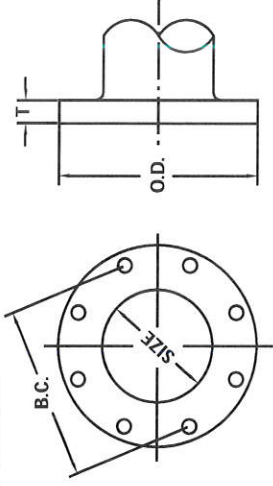
ANSI/AWWA C110/A21.10

1" - 64" DUCTILE IRON FLANGED FITTINGS

GENERAL SPECIFICATIONS

MATERIAL: Ductile iron per ASTM A536**PRESSURE:** 250 PSI rating for 1" - 48" sizes and 150 PSI rating for 54" - 64"**TESTING:** In accordance with ANSI/AWWA C110/A21.10, UL and FM requirements**LAYING LENGTH:** 2" - 48" sizes in accordance with ANSI/AWWA C110/A21.10 and ANSI B16.1 and 54" - 64" sizes in accordance with ANSI/AWWA C153/A21.53 (fittings not listed in ANSI/AWWA have dimensions per Star design as noted in the catalog)**WEIGHTS:** Are in pounds, unless noted otherwise and do not include accessories, cement lining and coatings**DRILLING:** In accordance with ANSI/AWWA C110/A21.10, ANSI/AWWA C153/A21.53 and ANSI B16.1 Class 125 Flanges**CEMENT LINING:** In accordance with ANSI/AWWA C104/A21.4 -- size 1" - 3" single thickness and sizes 4" - 64" double thickness. [Click here for a pressure jetting discussion](http://www.starpipeproducts.com/pressure_cleaning_guidelines.asp) or visit http://www.starpipeproducts.com/pressure_cleaning_guidelines.asp.**COATING:** ~~Asphatlic seal coat inside in accordance with ANSI/AWWA C104/A21.4 and prime coat outside~~**APPROVALS:** 2" - 12" Underwriters Laboratories and UL/C Listed and Factory Mutual approved for 300 PSI rating. Please consult factory for detail listing and approvals. 3" and greater are UL/ANSI/NSF Standards 61 and 372.**DIMENSIONS:** All dimensions are in inches unless noted otherwise.**INSTALLATION:** Per ANSI/AWWA C110 and C111

WATER QUALITY



FLANGE DETAILS

NOM. SIZE	O.D.	B.C.	T	BOLT HOLE DIA.	BOLTS	
					SIZE	NO.
1	4.25	3.12	0.44	0.62	1/2 x 2	4
1 1/2	5.00	3.88	0.56	0.62	1/2 x 2	4
2	6.00	4.75	0.62	0.75	5/8 x 2 1/4	4
2 1/2	7.00	5.50	0.69	0.75	5/8 x 2 1/2	4
3	7.50	6.00	0.75	0.75	5/8 x 2 1/2	4
4	9.00	7.50	0.94	0.75	5/8 x 3	8
5	10.00	8.50	0.94	0.88	3/4 x 3 1/2	8
6	11.00	9.50	1.00	0.88	3/4 x 3 1/2	8
8	13.50	11.75	1.12	0.88	3/4 x 3 1/2	8
10	16.00	14.25	1.19	1.00	7/8 x 4	12
12	19.00	17.00	1.25	1.00	7/8 x 4	12
14	21.00	18.75	1.38	1.13	1 x 4 1/2	12
16	23.50	21.25	1.44	1.13	1 x 4 1/2	16
18	25.00	22.75	1.56	1.25	1 1/8 x 5	16
20	27.50	25.00	1.69	1.25	1 1/8 x 5	20
24	32.00	29.50	1.88	1.38	1 1/4 x 5 1/2	20
30	38.75	36.00	2.12	1.38	1 1/4 x 6 1/2	28
36	46.00	42.75	2.38	1.63	1 1/2 x 7	32
42	53.00	49.50	2.62	1.63	1 1/2 x 7 1/2	36
48	59.50	56.00	2.75	1.63	1 1/2 x 8	44
54	66.25	62.75	3.00	2.00	1 3/4 x 8 1/2	44
60	73.00	69.25	3.12	2.00	1 3/4 x 9	52
64	80.00	76.00	3.38	2.00	1 3/4 x 9	52

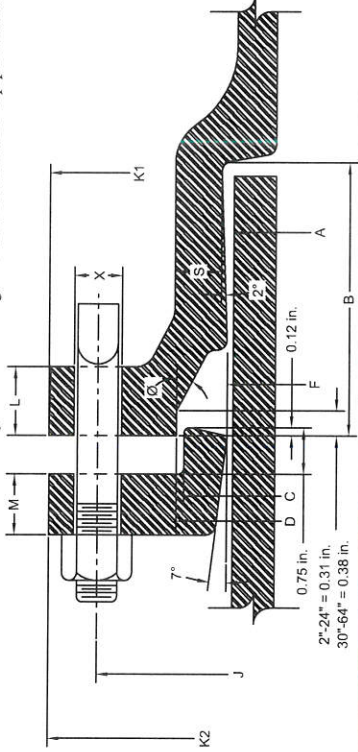


**3"-24" MJ C-153
Compact Body****Compact MJ Fittings**

ANSI/AWWA C153/A21.53

2" - 64" DUCTILE IRON MECHANICAL JOINT COMPACT FITTINGS

GENERAL SPECIFICATIONS

MATERIAL: Ductile Iron per ASTM A536**PRESSURE:** 350 PSI rating for 2" - 24" sizes, 250 PSI rating for 30" - 48" sizes and 150 PSI rating for 54" - 64" sizes**TESTING:** In accordance with ANSI/AWWA C153/A21.53, ANSI/AWWA C111/A21.11, UL and FM requirements**LAYING LENGTH:** In accordance with ANSI/AWWA C153/A21.53 (fittings not listed in ANSI/AWWA have dimensions per Star design as noted in the catalog)**DEFLECTION:** 2" - 4"=8° | 6"=7° | 8"-12"=5° | 14"-16"=3 1/2° | 18"-24"=3° | 30"-64"=2°**WEIGHTS:** Are in pounds, unless noted otherwise and do not include accessories, cement lining and coating**FLANGES:** Flanged ends on fittings match ANSI/AWWA C115/A21.15 and ANSI B16.1 class 125 flanges**CEMENT LINING:** In accordance with ANSI/AWWA C104/A21.4 - size 2" - 3" single thickness and sizes 4" - 64" double thickness. [Click here for pressure lining discussion or visit http://www.starpipeproducts.com/pressure_cleaning_guidelines.asp](http://www.starpipeproducts.com/pressure_cleaning_guidelines.asp).**COATING:** Asphaltic seal coat inside and out in accordance with ANSI/AWWA C104/A21.4 and referenced in ANSI/AWWA C153/A21.53**GASKETS:** SBR in accordance with ANSI/AWWA C111/A21.11 (see pg. 16)**T-BOLTS/NUTS:** Low alloy steel in accordance with ANSI/AWWA C111/A21.11 (see pg. 18)**APPROVALS:** 3" - 12" UL/ULC Listed | 2" and greater are UL/ANSI/NSF Standards 61 and 372 | 3" - 16" FM APPROVED. Please consult factory for detail listing and approvals.**DIMENSIONS:** All dimensions are in inches unless noted otherwise. [Click here for a short commentary on non-pressure sewer applications or visit http://www.starpipeproducts.com/non-pressure_sewer_applications.asp](http://www.starpipeproducts.com/non-pressure_sewer_applications.asp). Review commentary before ordering or installing fittings for this application.)**INSTALLATION:** Per ANSI/AWWA C600 and C111 using DIP conforming to C150/C151 and PVC pipe conforming to C900/C905

APPROVED

WATER QUALITY

MECHANICAL JOINT DIMENSIONS

NOM. SIZE	A DIA.	B	C DIA.	D DIA.	F DIA.	J DIA.	K1 DIA.	K2 DIA.	L	M	S	Ø	X DIA.	BOLTS	
														SIZE	NO.
2	2.50	2.50	3.39	3.50	2.61	4.75	6.19	6.25	0.58	0.62	0.36	28°	3/4	5/8 x 3	2
3	3.96	2.50	4.84	4.94	4.06	6.19	7.62	7.69	0.58	0.62	0.39	28°	3/4	5/8 x 3	4
4	4.80	2.50	5.92	6.02	4.90	7.50	9.06	9.12	0.60	0.75	0.39	28°	7/8	3/4 x 3 1/2	4
6	6.90	2.50	8.02	8.12	7.00	9.50	11.06	11.12	0.63	0.88	0.43	28°	7/8	3/4 x 3 1/2	6
8	9.05	2.50	10.17	10.27	9.15	11.75	13.31	13.37	0.66	1.00	0.45	28°	7/8	3/4 x 3 1/2	6
10	11.10	2.50	12.22	12.34	11.20	14.00	15.62	15.62	0.70	1.00	0.47	28°	7/8	3/4 x 3 1/2	8
12	13.20	2.50	14.32	14.44	13.30	16.25	17.88	17.88	0.73	1.00	0.49	28°	7/8	3/4 x 3 1/2	8
14	15.30	3.50	16.40	16.54	15.44	18.75	20.25	20.25	0.79	1.25	0.55	28°	7/8	3/4 x 4	10
16	17.40	3.50	18.50	18.64	17.54	21.00	22.50	22.50	0.85	1.31	0.58	28°	7/8	3/4 x 4	12
18	19.50	3.50	20.60	20.74	19.64	23.25	24.83	24.75	1.00	1.38	0.68	28°	7/8	3/4 x 4	12
20	21.60	3.50	22.70	22.84	21.74	25.50	27.08	27.00	1.02	1.44	0.69	28°	7/8	3/4 x 4	14
24	25.80	3.50	26.90	27.04	25.94	30.00	31.58	31.50	1.02	1.56	0.75	28°	7/8	3/4 x 4 1/2	16
30	32.00	4.00	33.29	33.46	32.17	36.88	39.12	39.12	1.31	2.00	0.82	20°	1 1/8	1 x 5 1/2	20
36	38.30	4.00	39.59	39.76	38.47	43.75	46.00	46.00	1.45	2.00	1.00	20°	1 1/8	1 x 5 1/2	24
42	44.50	4.00	45.79	45.96	44.67	50.62	53.12	53.12	1.45	2.00	1.25	20°	1 3/8	1 1/4 x 6	28
48	50.80	4.00	52.09	52.26	50.97	57.50	60.00	60.00	1.45	2.00	1.35	20°	1 3/8	1 1/4 x 6	32
54	57.56	4.00	58.82	59.02	57.73	63.20	65.70	65.70	1.88	2.00	1.50	20°	1 3/8	1 1/4 x 6 1/2	36
60	61.61	4.00	62.87	63.07	61.78	67.72	70.22	70.22	1.88	2.00	1.55	20°	1 3/8	1 1/4 x 6 1/2	36
64	65.67	4.00	66.96	67.13	65.84	71.86	74.36	74.36	1.88	2.00	1.62	20°	1 3/8	1 1/4 x 6 1/2	38



Full Body MJ Fittings

ANSI/AWWA C110/A21.10

30"-48" Full-
Body

2" - 64" DUCTILE IRON MECHANICAL JOINT FULL BODY FITTINGS

GENERAL SPECIFICATIONS

MATERIAL: Ductile iron per ASTM A536

PRESSURE: 350 PSI rating for 2" - 24" sizes, 250 PSI rating for 30" - 48" and 150 PSI for 54" - 64" or as noted

TESTING: In accordance with ANSI/AWWA C110/A21.10

LAYING LENGTH: In accordance with ANSI/AWWA C110/A21.10 (fittings not listed in ANSI/AWWA have dimensions per Star design as noted in the catalog)

WEIGHTS: Are in pounds, unless noted otherwise and do not include accessories, cement lining and coating

FLANGES: Flanged ends on fittings match ANSI/AWW C110/A21.10 and ANSI B16.1 class 125 flanges.

CEMENT LINING: In accordance with ANSI/AWWA C104/A21.4 size 2" - 2" single thickness and sizes 4" - 64" double thickness. [Click here for pressure letting discussion or visit http://www.starpipeproducts.com/pressure_cleaning_guidelines.asp](http://www.starpipeproducts.com/pressure_cleaning_guidelines.asp).

COATING: Asphaltic seal coat inside and out in accordance with ANSI/AWWA C104/A21.4 and referenced in ANSI/AWWA C110/A21.10

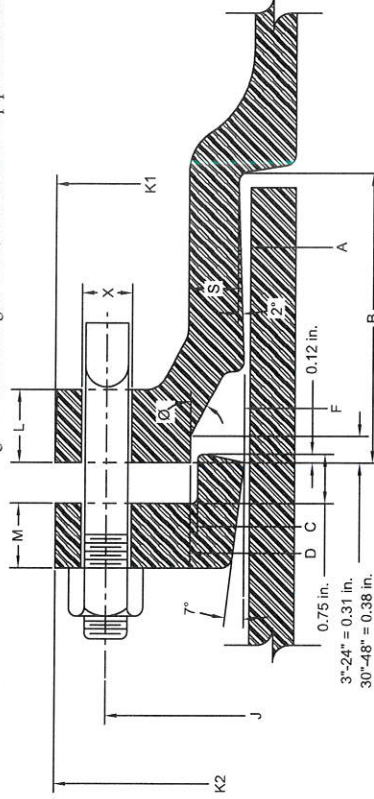
GASKETS: SBR in accordance with ANSI/AWWA C111/A21.11 (see pg. 16)

T-BOLTS/NUTS: Low alloy steel in accordance with ANSI/AWWA C11/A21.11 (see pg. 18)

APPROVALS: Sizes 2" and greater are UL/ANSI/NSF Standards 61 and 372

DIMENSIONS: All dimensions are in inches unless noted otherwise. [Click here for a short commentary on non-pressure sewer applications](http://www.starpipeproducts.com/non-pressure_sewer_applications.asp) or visit http://www.starpipeproducts.com/non-pressure_sewer_applications.asp. Review commentary before ordering or installing fittings for this application.)

INSTALLATION: Per ANSI/AWWA C600 and C111 using DIP conforming to C150/C151 and PVC pipe conforming to C900/C905



MECHANICAL JOINT DIMENSIONS

NOM. SIZE	A DIA.	B	C DIA.	D DIA.	F DIA.	J DIA.	K1 DIA.	K2 DIA.	L	M	S	Ø	X DIA.	BOLTS	
														SIZE	NO.
2	2.50	2.50	3.39	3.50	2.61	4.75	6.25	6.25	0.75	0.62	0.44	28°	¾	⅝ x 3	2
3	3.96	2.50	4.84	4.94	4.06	6.19	7.69	7.69	0.94	0.62	0.52	28°	¾	⅝ x 3	4
4	4.80	2.50	5.92	6.02	4.90	7.50	9.12	9.12	1.00	0.75	0.65	28°	7/8	¾ x 3 ½	4
6	6.90	2.50	8.02	8.12	7.00	9.50	11.12	11.12	1.06	0.88	0.70	28°	7/8	¾ x 3 ½	6
8	9.05	2.50	10.17	10.27	9.15	11.75	13.37	13.37	1.12	1.00	0.75	28°	7/8	¾ x 4	6
10	11.10	2.50	12.22	12.34	11.20	14.00	15.69	15.62	1.19	1.00	0.80	28°	7/8	¾ x 4	8
12	13.20	2.50	14.32	14.44	13.30	16.25	17.94	17.88	1.25	1.00	0.85	28°	7/8	¾ x 4	8
14	15.30	3.50	16.40	16.54	15.44	18.75	20.31	20.25	1.31	1.25	0.89	28°	7/8	¾ x 4 ½	10
16	17.40	3.50	18.50	18.64	17.54	21.00	22.56	22.50	1.38	1.31	0.97	28°	7/8	¾ x 4 ½	12
18	19.50	3.50	20.60	20.74	19.64	23.25	24.83	24.75	1.44	1.38	1.05	28°	7/8	¾ x 4 ½	12
20	21.60	3.50	22.70	22.84	21.74	25.50	27.08	27.00	1.50	1.44	1.12	28°	7/8	¾ x 4 ½	14
24	25.80	3.50	26.90	27.04	25.94	30.00	31.58	31.50	1.62	1.56	1.22	28°	7/8	¾ x 5	16
30	32.00	4.00	33.29	33.46	32.17	36.88	39.12	39.12	1.81	2.00	1.50	20°	1 ¼	1 x 6	20
36	38.30	4.00	39.59	39.76	38.47	43.75	46.00	46.00	2.00	2.00	1.80	20°	1 ¼	1 x 6	24
42	44.50	4.00	45.79	45.96	44.67	50.62	53.12	53.12	2.00	2.00	1.95	20°	1 ¾	1 ¼ x 6 ½	28
48	50.80	4.00	52.09	52.26	50.97	57.50	60.00	60.00	2.00	2.00	2.20	20°	1 ¾	1 ¼ x 6 ½	32

{ Fittings & Dimensions Available On Request }



PROTECTO 401™ LINING

CERAMIC EPOXY
FOR DUCTILE IRON PIPE & FITTINGS

Factory Applied P-401
Lined Fittings.
As needed Basis for JP
annual Contract

PRODUCT PROFILE

Protecto 401™ was created by Induron Protective Coatings.



FEATURES AND BENEFITS

- **Superior Internal Lining** for corrosion and abrasion resistance for sewer applications, resulting in an extended life of the system
- **Non-Hazardous and Safe for our Environment**, ensuring confidence in using a quality product that is safe
- **Non-Toxic Coating** (no volatile organic compounds)
- **Non-Flammable** (no solvents in its compound)
- **Exceptional Alternative** to other linings available in the market
- The application process **does NOT require OSHA regulation**
- **Re-Coatable**, Protecto 401™ joint compound shall be used for touch-up or repair in accordance with manufacturer's recommendations.

SUGGESTED SPECIFICATION FOR PROTECTO 401™ CERAMIC EPOXY FOR DUCTILE IRON PIPE & FITTINGS

All ductile iron pipe and fittings shall be internally lined with 40 mils. of Protecto 401™, an amine cured novolac epoxy manufactured by Induron Protective Coatings.

**PROTECTO 401™ LINING**

CERAMIC EPOXY FOR DUCTILE IRON PIPE & FITTINGS

LINING MATERIAL

Protecto 401™ is manufactured by Induron Protective Coatings and is an amine cured novolac epoxy, which contains, a minimum of 20% by volume of ceramic quartz pigment.

Protecto 401™ meets or exceeds the following criteria:

A. A permeability rating of 0.00 when tested according to Method A of ASTM E-96-66, Procedure A with a test duration of 30 days.

B. The following test must be run on coupons from factory lined ductile iron pipe:

- * ASTM B-117 Salt Spray (scribed panel) - Results to equal 0.0 undercutting after two years.
 - * ASTM G-95 Cathodic Disbondment 1.5 volts@ 77°F. Results to equal no more than 0.5 mm undercutting after 30 days.
 - * Immersion testing rated using ASTM D-714-87.
 - 20% Sulfuric acid-No effect after two years.
 - 140°F 25% Sodium Hydroxide- No effect after two years.
 - 160°F Distilled Water-No effect after two years.
 - 120°F Tap Water (scribed panel)- 0.0 undercutting after two years with no effect.
 - * ASTM G-22 90 Standard practice for determining resistance of Synthetic Polymeric materials to bacteria. The test should determine the resistance to growth of AcidithiobacillusBacteria and should be conducted at 30 degrees centigrade for a period of 7 days on a minimum of 4 panels. The growth must be limited only to trace amounts of bacteria.
- C.** An abrasion resistance of no more than 3 mils (.075 mm) loss after one million cycles using European Standard EN 598: 1994 Section 7.8 Abrasion Resistance.

APPLICATION METHOD**Applicator**

The lining shall be applied by a Protecto 401™ authorized applicator with a successful history of applying linings to the interior of Ductile iron Pipe and Fittings. All applicators must be independently inspected at least two times per year to insure compliance with the requirements of this specification. This inspection must be coordinated and reviewed by the manufacturer of the lining material and any deviation from the application and/or quality requirements shall be corrected by the applicator. All inspections shall be in writing and a permanent record maintained.

Surface Preparation

Prior to abrasive blasting, the entire area to receive the protective compound shall be inspected for oil, grease, etc. Any areas with oil, grease, or any substance that can be removed by solvent, shall be solvent cleaned to remove those substances. After the surface has been made free of grease, oil or other substances, all areas to receive the protective compounds shall be abrasive blasted using sand or grit abrasive media. The entire surface to be lined shall be struck with the blast media so that all rust, loose oxides, etc., are removed from the surface. Only slight stains and tightly adhering oxide may be left on the surface. Any area where rust reappears before lining must be re-blasted.

(continued on next page)

**PROTECTO 401™ LINING**

CERAMIC EPOXY FOR DUCTILE IRON PIPE & FITTINGS

APPLICATION METHOD (CONTINUED)**Lining**

After surface preparation and within 12 hours of surface preparation, the interior of the pipe shall receive 40 mils nominal dry film thickness. No lining shall take place when the substrate or ambient temperature is below 40°F. The surface also must be dry and dust free. If flange pipe or fittings are included in the project, the lining shall not be used on the face of the flange.

Coating of Bell Sockets and Spigot Ends

Due to the tolerances involved, the gasket area and spigot end up to 6 inches back from the end of the spigot end must be coated with 6 mils nominal, 10 mils maximum using Protecto 401™ Joint Compound. The Joint Compound shall be applied by brush to ensure coverage. Care should be taken that the Joint Compound is smooth without excess buildup in the gasket seat or on the spigot ends. Coating of the gasket seat and spigot ends shall be done after the application of the lining.

Number of Coats

The number of coats of lining material applied shall be as recommended by the lining manufacturer. However, in no case shall this material be applied above the dry thickness per coat recommended by the lining manufacturer in printed literature. The maximum or minimum time between coats shall be that time recommended by the lining material manufacturer. To prevent delamination between coats, no material shall be used for lining which is not indefinitely recoatable with itself without roughening of the surface.

Touch-Up and Repair

Protecto 401™ Joint Compound shall be used for touch-up or repair in accordance with manufacturer's recommendations.

INSPECTION AND CERTIFICATION**Inspection**

All ductile iron pipe and fitting linings shall be checked for thickness using a magnetic film thickness gauge. The thickness testing shall be done using the method outlined in SSPC PA-2 Film Thickness Rating.

The interior lining of all pipe barrels and fittings shall be tested for pinholes with a non-destructive 2,500 volt test. Any defects found shall be repaired prior to shipment.

Each pipe joint and fitting shall be marked with the date of application of the lining system along with its numerical sequence of application on that date and records maintained by the applicator of his work.

Certification

The pipe or fitting manufacturer must supply a certificate attesting to the fact that the applicator met the requirements of this specification, and that the material used was as specified.

Handling

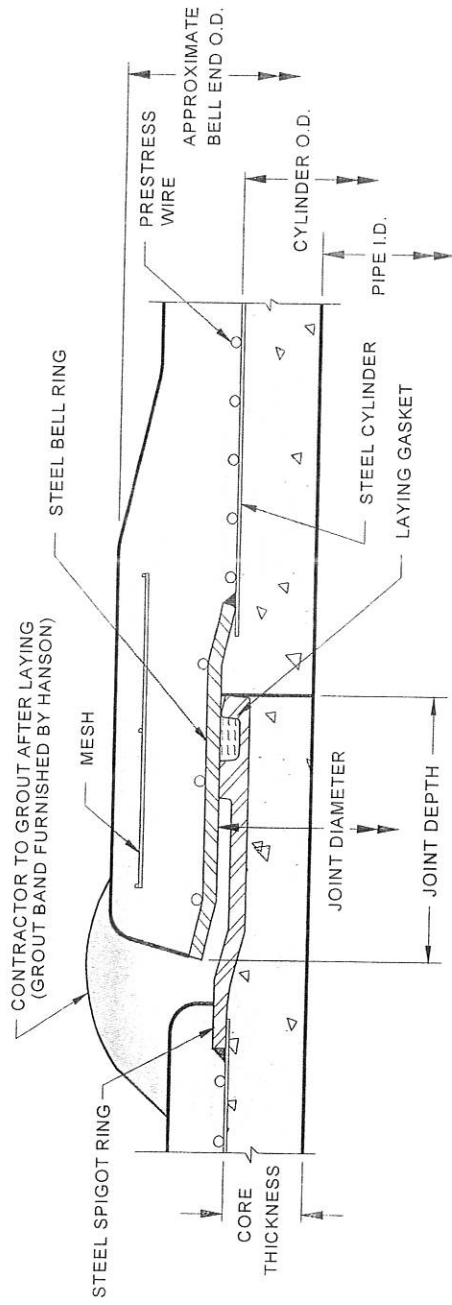
Lined pipe and fittings must be handled only from the outside of the pipe and fittings. No forks, chains, straps, hooks, etc. shall be placed inside the pipe and fittings for lifting, positioning, or laying. The pipe shall not be dropped or unloaded by rolling.

Care should be taken not to let the pipe strike sharp objects while swinging or being off loaded. Ductile iron pipe should never be placed on grade by use of hydraulic pressure from an excavator bucket or by banging with heavy hammers.

Connecting Ductile Iron Pipe to Existing Prestressed Concrete Steel Cylinder Pipe

Connections to Prestressed Concrete Steel Cylinder Pipe (PCCP) must be made at existing bell and spigot joints. The pipe cannot be cut in mid-barrel and a connection made. Hanson Pressure Pipe can supply a wide range of steel adapter fittings to effect connections between PCCP and many other different pipe types.

This brochure contains information for one of the most common connection types; new ductile iron pipe to existing PCCP. For instance, the techniques described herein can be used for the insertion of ductile iron pipe and a tee fitting or the insertion of a valve and related ductile iron fittings into a PCCP line.



PIPE INSIDE DIA.	CORE THICKNESS	JOINT DIAMETER	CYLINDER OUTSIDE DIA.	APPROXIMATE WEIGHT (#/L.F.)	APPROXIMATE BELL END OUTSIDE DIA.
16	1	18 1/2	18	140	22 1/2
18	1 1/8	20 3/4	20 1/4	155	24 3/4
20	1 1/4	23	22 1/2	185	27
24	1 1/2	27 1/2	27	240	31 1/2
30	1 7/8	34 1/4	33 3/4	350	38 1/4
36	2 1/4	41	40 1/2	475	45
42	2 5/8	47 1/4	47 1/4	590	51 1/4
48	3	54	54	760	58

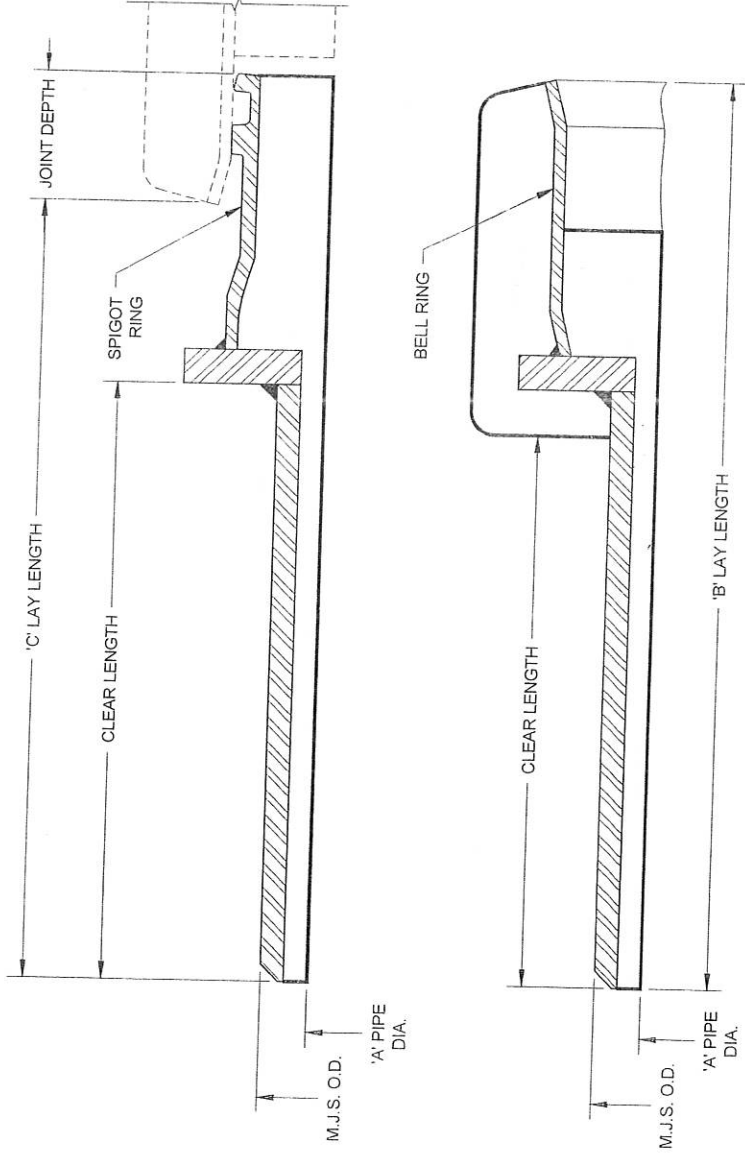
ALL DIMENSIONS IN INCHES EXCEPT AS SHOWN

Typical Cross Section of Prestressed Lined Cylinder Pipe



Hanson
HEIDELBERGCEMENT Group

Hanson Pressure Pipe
1003 North MacArthur Boulevard
Grand Prairie, TX 75050
Tel.: 972-262-3600 Fax: 972-266-7596
www.hansonpressurepipe.com



A	JOINT DEPTH	LAYING LENGTH			CLEAR LENGTH	M.J.S. O.D.
		B	C			
16"	3 1/4"	1.63'	1.35'		12" min.	17.40"
18"	3 1/4"	1.63'	1.35'		12" min.	19.50"
20"	3 1/4"	1.63'	1.35'		12" min.	21.60"
24"	3 1/4"	1.63'	1.35'		12" min.	25.80"
30"	3 1/4"	1.65'	1.38'		12" min.	32.00"
36"	3 3/8"	1.65'	1.36'		12" min.	38.30"
42"	3 3/4"	2.60'	2.29		24" min.	44.50"
48"	3 7/8"	2.60'	2.28		24" min.	50.80"

16" - 48" PCCP x MJS Adapter Fitting



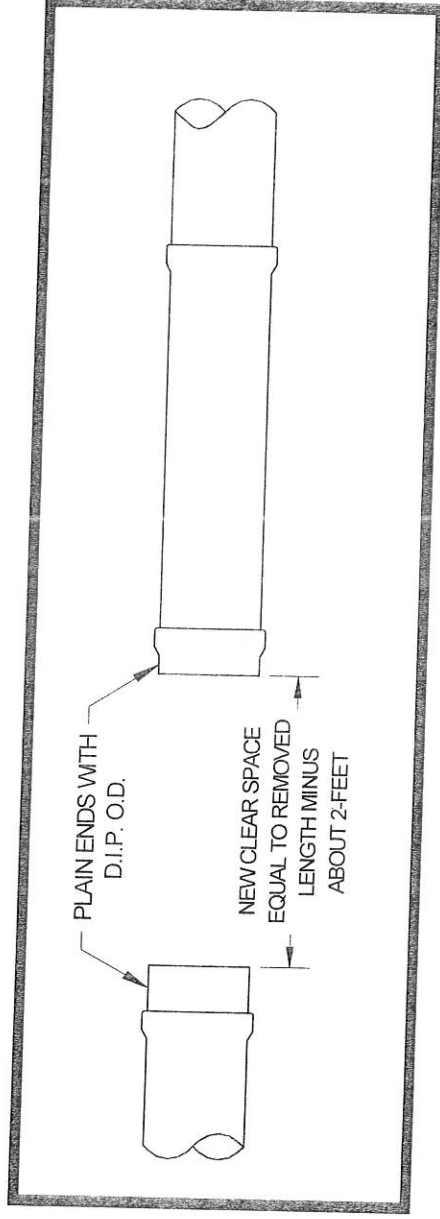
Hanson
HEIDELBERGCEMENT Group

Hanson Pressure Pipe
1003 North MacArthur Boulevard
Grand Prairie, TX 75050
Tel.: 972-262-3600 Fax: 972-266-7596
www.hansonpressurepipe.com

Each MJS adapter fitting is supplied with an o-ring rubber gasket for the PCCP joint and a grout band. After the existing PCCP joints have been exposed, the MJS adapter fittings can be installed. Carefully inspect and then clean the joint rings of all dirt and any other debris. Apply a thin layer of vegetable soap lubricant to the joint rings and to the o-ring rubber gasket. Exposed steel

on the MJS adapters are painted with a coating complying with the NSF 61 Standard for contact with potable water.

In order to keep the adapters in place while subsequent pipe installation continues, some contractors tack-weld the joints between the adapters and the existing pipe.



After the adapters have been installed, the exterior joint recesses between the adapters and the existing PCCP must be protected from corrosion by filling with portland cement grout.

The grout band for PCCP consists of a Typar synthetic fabric layer (gray in color) and a layer of closed cell foam. These layers are sewn together along with a pair of 5/8" wide steel bands at each edge which are used to secure the band to the pipe exterior. A stretching tool is used to tighten the steel bands. Once the bands are pulled tight, a steel clip is crimped around the band ends to hold them in position. It's important that the band be carefully placed against the exterior surface of the pipe to insure that it's flush with no gaps or gathers. The closed cell foam surface is to be

placed against the pipe exterior. The band must be centered on the joint.

The wet grout will flow down to the bottom of the band and begin to bulge it out. It's often helpful to place some bedding material directly under the band at the bottom to support the weight of the wet grout. Take care to not push excessive amounts of bedding material under the band such that it's pushed up into the joint recess.

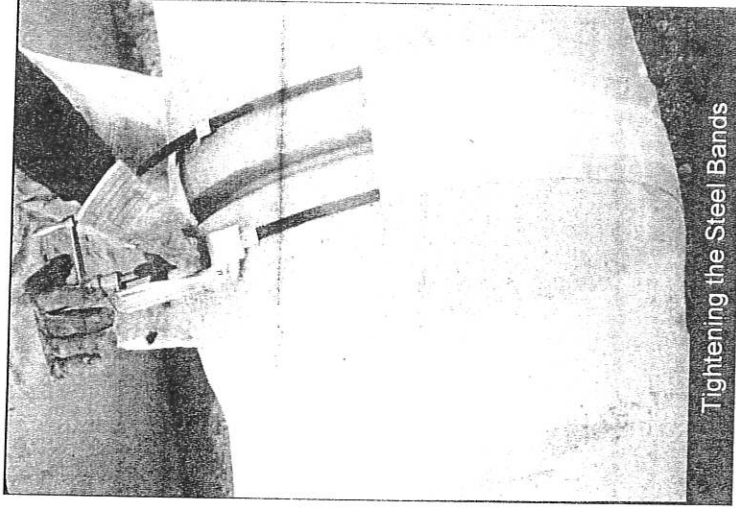


Hanson
HEIDELBERGCEMENT Group

Hanson Pressure Pipe
1003 North MacArthur Boulevard
Grand Prairie, TX 75050
Tel.: 972-262-3600 Fax: 972-266-7596
www.hansonpressurepipe.com

This will impede the flow of wet grout. For larger diameter pipe, placing the grout in several lifts is helpful. The grout is allowed to take an initial set before subsequent lifts are added.

Mix the grout using one part ASTM C150 Type 1 or Type 2 portland cement to not more than three parts clean sand with sufficient water to achieve a pourable consistency. The grout should look and pour like a thick cream. If it's too thick, it will not flow around the joint; if it's too thin, it may leak out of the band. Carefully pour the mixed grout into the gap at the top of the band. Most contractors use plastic 5 gallon buckets. A large funnel might be helpful. As the pouring proceeds, the workers should inspect the band around the joint periphery to insure that the grout is flowing all around. Once the band is full and wet grout is puddling at the gap at the top, apply a stiffer mix (perhaps the consistency of wet brick mortar)

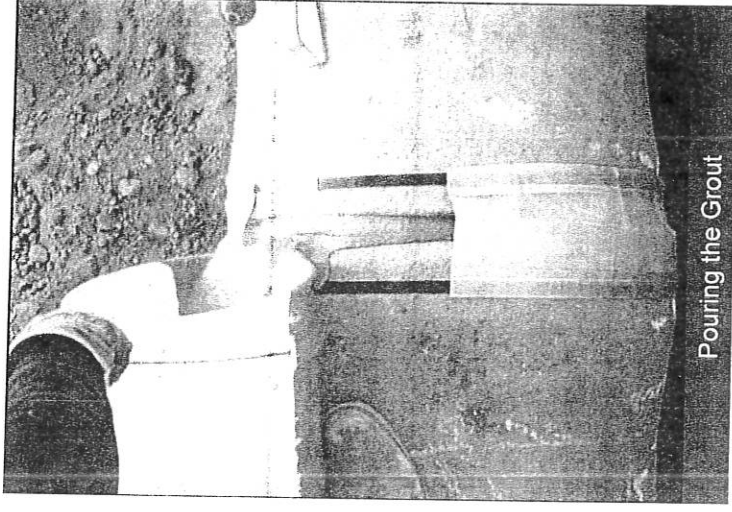


Tightening the Steel Bands

over the joint. Insure that all metal joint components have at least 1" of coverage. Then fold the band flap over the gap and allow the grout to cure.

The joint grout's primary function is to provide corrosion protection to the exposed metal components of the joint. We recommend that pipe with restrained joints not be pressurized until the joints have been grouted and the grout allowed to cure. The wet grout flows down and around the restrained joint components and can act as a variable width shim between the clamp and the hardness bars and serve to transfer axial thrust forces in compression.

Backfilling operations can begin immediately after the band has been filled. When placing backfill around the filled bands, care must be taken to avoid damage to or displacement of the bands.



Pouring the Grout



Hanson
HEIDELBERGCEMENT Group

Hanson Pressure Pipe
1003 North MacArthur Boulevard
Grand Prairie, TX 75050
Tel.: 972-262-3600 Fax: 972-266-7596
www.hansonpressurepipe.com