

**BID/RFP RECEIPT**

Receipt of Bid/RFP Proposal No. 50-00129 416

From: Hydrotec Engineering Co

Company's Name

Person Received Bid: Alvin

Number of Envelopes/Boxes Received: 1 envelope

Jefferson Parish Purchasing Department  
200 Derbigny Street  
Suite 4400 – General Government Building  
Gretna, LA 70053

RECEIVED  
2020 FEB -5 PM 2 20  
JEFFERSON PARISH  
PURCHASING



From:

**GULF STATES ENGINEERING CO., INC.**

201 Harbor Circle

New Orleans, LA 70126-1103

**To: Jefferson Parish Purchasing Department**

**Suite 4400**

**200 Derbigny Street**

**Gretna, La. 70053**

**Buyer: Mark Buttery**

**Bid # 50-129416**

**OPENS: FEBRUARY 6, 2020 @ 11:00 A.M.**



**CENTRALBIDDING**  
FROM CENTRAL AUCTION HOUSE

**5000129416 PURCHASE OF BUTTERFLY VALVE WITH ROTORK IQT  
ACTUATOR FOR THE EAST BANK DEPARTMENT OF WATER**  
Jefferson Parish Government

Project documents obtained from [www.CentralBidding.com](http://www.CentralBidding.com)

03-Feb-2020 08:14:04 AM





# JEFFERSON PARISH

## DEPARTMENT OF PURCHASING

CYNTHIA LEE SHENG  
PARISH PRESIDENT

RENNY SIMNO  
DIRECTOR

January 2020

### **Changes to Jefferson Parish Bidding Information**

The Jefferson Parish Purchasing Department would like to make vendors aware of the following changes:

**Probable Construction Cost:** Per Jefferson Parish Administrative Policy, the probable construction cost is not revealed in the Jefferson Parish Bidding Documents. Jefferson Parish Administrative Policy has changed and a range of the probable construction cost will be stated in the Jefferson Parish bidding document, entitled Important Notice to All Bidders – Bid Requirements. Per Louisiana Public Bid Law, the probable construction cost will be read at the bid opening.

**Insurance Requirement:** **All bidders** must provide proof of valid insurance in the required amounts as stated in the Standard Insurance Requirements for bidding purposes. Failure to provide the proof of valid insurance in all of the required coverage amounts will result in bid rejection.

*(See last two pages of this bid.)*

GENERAL GOVERNMENT BLDG. – 200 DERBIGNY ST., SUITE 4400, GRETN, LA 70053  
OFFICE 504.364.2678

JOSEPH S. YENNI BLDG. – 1221 ELMWOOD PARK BLVD., SUITE 404, JEFFERSON, LA 70123  
OFFICE 504.364.2678

EMAIL: [PURCHASING@JEFFPARISH.NET](mailto:PURCHASING@JEFFPARISH.NET) WEBSITE: [WWW.JEFFPARISH.NET](http://WWW.JEFFPARISH.NET)





**BID 50-129416**

**PURCHASE OF BUTTERFLY VALVE WITH ROTORK IQT ACTUATOR FOR  
THE EAST BANK DEPARTMENT OF WATER**

**February <sup>6</sup>~~4~~, 2020 @ 11:00 A.M.**

**ATTENTION VENDORS!!!**

**Please review all pages and respond accordingly, complying with all provisions in the technical specifications and Jefferson Parish Instructions for Bidders and General Terms and Conditions. All bids must be received in the Purchasing Department by the bid due date and time.**

**Jefferson Parish Purchasing Department  
200 Derbigny Street, Suite 4400  
Gretna, LA 70053  
Please Email Any Questions To:  
Mark Buttery  
MBUTTERY@JEFFPARISH.NET  
504-364-2810**

DATE: 1/27/2020

INVITATION TO BID  
THIS IS NOT AN ORDER

Page: 1

BID NO.: 50-00129416

**JEFFERSON PARISH**

PURCHASING DEPARTMENT  
P.O. BOX 9  
GRETN, LA. 70054-0009  
504-364-2678

VENDOR:

BUYER: MBUTTERY@jeffparish.net

Bids will be received until 11:00 AM, 2/04/2020 via online at [www.jeffparishbids.net](http://www.jeffparishbids.net) or by hand delivery, USPS mail or other courier service to Purchasing Department, 200 Derbigny Street (General Government Building), Suite 4400, Gretna, LA 70053. For convenience, bidders may also submit bids in the East Bank Purchasing Department, Suite 404, Jefferson Parish Joseph S. Yenni Building, 1221 Elmwood Park Blvd., Jefferson LA 70123. However, if submitting bids on the day of bid opening, bidders must submit at the West Bank location only.

All bids submitted are subject to these instructions and general conditions and any special conditions and specifications contained herein, all of which are made part of this bid proposal reference. By submitting a bid, vendor agrees to comply with all provisions of Louisiana Law, as well be in compliance with the Jefferson Parish Code of Ordinances, Louisiana Code of Ethics, applicable Jefferson Parish ethical standards and Jefferson Parish Resolution No. 113646 and/or Resolution No. 113647. A copy of these resolutions may be obtained from the Office of the Parish Clerk, Suite 6700, Jefferson Parish General Government Building, 200 Derbigny Street, Gretna, LA 70053. You may also obtain a copy by visiting the Purchasing Department webpage at [purchasing.jeffparish.net](http://purchasing.jeffparish.net) and clicking on On-line forms.

All vendors submitting bids should register as a Jefferson Parish vendor if not already yet registered. Registration forms may be downloaded from <http://purchasing.jeffparish.net> and by clicking on Vendor Information. Current W-9 forms with respective Tax Identification numbers and vendor applications may be submitted at any time; however, if your company is not registered and/or a current W-9 form is not on file, vendor registration is mandatory. Further, a current W-9 form and respective Tax Identification number must be supplied upon contract execution, should you be awarded a contract and/or issued purchase order. Failure to do so may result in delay of payment.

As per LSA-RS 47:301 et seq., all governmental bodies are excluded from payment of sales taxes to any Louisiana taxing body. Quotations shall be based on F.O.B. Delivered, anywhere within the Parish as designated by the Purchasing Department. JEFFERSON PARISH WILL ACCEPT ONE BID ONLY FROM EACH VENDOR. Items bid must meet specifications. JEFFERSON PARISH will accept one price for each item unless otherwise indicated. Two or more prices for one item will result in bid rejection. Bidders are required to complete, sign and return the bid form and/or complete and return the associated line item pricing forms as indicated. The price quoted for work shall be stated in figures. In the event there is a difference in unit prices and totals, the unit prices shall prevail.

JEFFERSON PARISH reserves the right to award contracts or place orders on a lump sum or individual item basis, or such combination, as shall in its judgment be in the best interest of JEFFERSON PARISH. Every contract or order shall be awarded to the LOWEST RESPONSIVE and RESPONSIBLE BIDDER, taking into consideration the CONFORMITY WITH THE SPECIFICATIONS and the DELIVERY AND/OR COMPLETION DATE

PROTESTS: Only those vendors that submit bids in response to this solicitation may protest any element of the procurement, in writing to the Director of the Purchasing Department. Written protest must be received within 48 hours of the release of the bid tabulation by the Purchasing Department. After consultation, the Parish Attorney's Office will then respond to protests in writing. (For more information, please see Chapter 2, Article VII, Division 2, Sec. 2-914.1 of the Jefferson Parish Code of Ordinances.)

JEFFERSON PARISH reserves the right to cancel all or any part of an order if not shipped promptly. No charges will be allowed for parking or cartage unless specified in the quotation. The order must not be filled at a higher price than quoted. JEFFERSON PARISH reserves the right to cancel at any time and for any reason by issuing a THIRTY (30) day written notice to the contractor.

JEFFERSON PARISH requires all products to be new (current) and all work must be performed according to standard practices for the project. Unless otherwise specified, no aftermarket parts will be accepted. Unless otherwise specified, all workmanship and materials must have at least one (1) year guaranty, in writing, from the date of delivery and/or acceptance of the project. Any deviations or alteration from the specifications must be indicated on the bid form for each item and upon request, product data for same must be submitted by the time specified by the Purchasing Department.

If this bid requires a pre-bid conference (see Additional Requirements section), bidders are advised that such conference will be held to allow bidders the opportunity to identify any discrepancies in the bid specifications and seek further clarification regarding instructions. The Purchasing Department will issue a written response to bidders' questions in the form of an Addendum.

All formal Addenda require written acknowledgment on the bid form by the bidder. Failure to acknowledge an Addendum on the bid form shall cause the bid to be rejected; JEFFERSON PARISH reserves the right to award bid to next lowest responsive and responsible bidder in this event.

USE OF BRAND NAMES AND STOCK NUMBERS: Where brand names and stock numbers are specified, it is for the purpose of establishing certain minimum standards of quality. Bids may be submitted for products of equal quality, provided brand names and stock numbers are specified. Complete product data may be required prior to award.

Quantities listed are for bidding purposes only. Actual requirements may be more or less than quantities listed.

Bidders are not to exclude from participation in, deny the benefits of, or subject to discrimination under any program or activity, any person in the United States on the grounds of race, color, national origin, or sex; nor discriminate on the basis of age under the Age Discrimination Act of 1975, or with respect to an otherwise qualified handicapped individual as provided in Section 504 of the Rehabilitation Act of 1973, or on the basis of religion, except that any exemption from such prohibition against discrimination on the basis of religion as provided in the Civil Rights Act of 1964, or Title VI and VII of the Act of April 11, 1968, shall also apply. This assurance includes compliance with the administrative requirements of the Revenue Sharing final handicapped discrimination provisions contained in Section 51.55 (c), (d), (e), and (k)(5) of the Regulations. New construction or renovation projects must comply with Section 504 of the 1973 Rehabilitation Act, as amended, in accordance with the American National Standard Institute's specifications (ANSI A117.1-1961).

Jefferson Parish and its partners as the recipients of federal funds are fully committed to awarding a contract(s) to firm(s) that will provide high quality services and that are dedicated to diversity and to containing costs. Thus, Jefferson Parish strongly encourages the involvement of minority and/or woman-owned business enterprises (DBE's, including MBE's, WBE's and SBE's) to stimulate participation in procurement and assistance programs.



## INSTRUCTIONS FOR BIDDERS AND GENERAL CONDITIONS

### IN ACCORDANCE WITH STATE REGULATIONS JEFFERSON PARISH OFFERS ELECTRONIC PROCUREMENT TO ALL VENDORS

This electronic procurement system allows vendors the convenience of reviewing and submitting bids online. This is a secure site and authorized personnel have limited read access only. Bidders are encouraged to submit electronically using this free service; while the website accepts various file types, one single PDF file containing all appropriate and required bid documents is preferred. Bidders submitting uploaded images of bid responses are solely responsible for clarity. If uploaded images/documents are not legible, then bidder's submission will be rejected. Please note all requirements contained in this bid package for electronic bid submission.

Please visit our E-Procurement Page at [www.jeffparishbids.net](http://www.jeffparishbids.net) to register and view Jefferson Parish solicitations. For more information, please visit the Purchasing Department page at <http://purchasing.jeffparish.net>.

## ADDITIONAL REQUIREMENTS FOR THIS BID

PLEASE MATCH THE NUMBERS PRINTED IN THIS BOX WITH THE CORRESPONDING INSTRUCTIONS BELOW.

13

1. All bidders must attend the MANDATORY pre-bid conference and will be required to sign in and out as evidence of attendance. In accordance with LSA R.S. 38:2212(I), all prospective bidders shall be present at the beginning of the MANDATORY pre-bid conference and shall remain in attendance for the duration of the conference. Any prospective bidder who fails to attend the conference or remain for the duration shall be prohibited from submitting a bid for the project.
2. Attendance to this pre-bid conference is optional. However, failure to attend the pre-bid conference shall not relieve the bidder of responsibility for information discussed at the conference. Furthermore, failure to attend the pre-bid conference and inspection does not relieve the successful bidder from the necessity of furnishing materials or performing any work that may be required to complete the work in accordance with the specification with no additional cost to the owner.
3. Contractor must hold current applicable JEFFERSON PARISH licenses with the Department of Inspection and Code Enforcement. Contractor shall obtain any and all permits required by the JEFFERSON PARISH Department of Inspection and Code Enforcement. The contractor shall be responsible for the payment of these permits. All permits must be obtained prior to the start of the project. Contractor must also hold any and all applicable Federal and State licenses. Contractor shall be responsible for the payment of these permits and shall obtain them prior to the start of the project.
4. A LA State Contractor's License will be required in accordance with LSA R.S. 37-2150 et. seq. and such license number will be shown on the outside of the bid envelope. Failure to comply will cause the bid to be rejected. Additionally if submitting the bid electronically, then the license number must be entered in the appropriate field in the Electronic Procurement system. Failure to comply will cause the bid to be rejected.
5. It is the bidder's responsibility to visit the job site and evaluate the job before submitting a bid.
6. Job site must be clean and free of all litter and debris daily and upon completion of the contract. Passageways must be kept clean and free of material, equipment, and debris at all times. Flammable material must be removed from the job site daily because storage will not be permitted on the premises. Precautions must be exercised at all times to safeguard the welfare of JEFFERSON PARISH and the general public.



**INSTRUCTIONS FOR BIDDERS AND GENERAL CONDITIONS**

7. **PUBLIC WORKS BIDS:** All awards for public works in excess of \$5,000.00 will be reduced to a formal contract which shall be recorded at the contractor's expense with the Clerk of Court and Ex-Officio Recorder of Mortgages for the Parish of Jefferson. A price list of recordation costs may be obtained from the Clerk of Court and Ex-Officio Recorder of Mortgages for the Parish of Jefferson. All awards in excess of \$25,000.00 will require both a performance and a payment bond. Unless otherwise stated in the bid specifications, the performance bond requirements shall be 100% of the contract price. Unless otherwise state in the bid specifications, the payment bond requirements shall be 100% of the contract price. Both bonds shall be supplied at the signing of the contract.
8. **NON-PUBLIC WORKS BIDS:** A performance bond will be required for this bid. The amount of the bond will be 100% of the contract price unless otherwise indicated in the specifications. The performance bond shall be supplied at the signing of the contract.
9. **NON-PUBLIC WORKS BIDS:** A payment bond will be required for this bid. The amount of the bond will be 100% of the contract price unless otherwise indicated in the specifications. The payment bond shall be supplied at the signing of the contract.
10. All bidders must comply with the requirements stated in the attached "Standard Insurance Requirements" sheet attached to this bid solicitation. Failure to comply with this instruction will result in bid rejection.
11. A bid bond will be required with bid submission in the amount of 5% of the total bid, unless otherwise stated in the bid specifications. Acceptable forms shall be limited to cashier's check, certified check, or surety bid bond. All sureties must be in original format (no copies). If submitting a bid online, vendors must submit an electronic bid bond through the respective online clearinghouse bond management system(s) as indicated in the electronic bid solicitation on Central Auction House. No scanned paper copies of any bid bond will be accepted as part of the electronic bid submission.
12. This is a requirements contract to be provided on an as needed basis. JEFFERSON PARISH makes no representations on warranties with regard to minimum guaranteed quantities unless otherwise stated in the bid specifications.
13. Freight charges should be included in total cost when quoting. If not quoted FOB DELIVERED, freight must be quoted as a separate item. Bid may be rejected if not quoted FOB DELIVERED or if freight charges are not indicated on bid form.
14. **PUBLIC WORKS BIDS - Completed, Signed and Properly Notarized Affidavits Required;** This applies to all solicitations for construction, alteration or demolition of public buildings or projects, in conformity with the provisions contained in LSA-RS 38:2212.9, LSA-RS 38:2212.10, LSA-RS 38:2224, and Sec 2-923.1 of the Jefferson Parish Code of Ordinances. For bidding purposes, all bidders must submit with bid submission COMPLETED, SIGNED and PROPERLY NOTARIZED Affidavits, including: Non-Conviction Affidavit, Non-Collusion Affidavit, Campaign Contribution Affidavit, Debt Disclosures Affidavit and E-Verify Affidavit. For the convenience of vendors, all affidavits have been combined into one form entitled PUBLIC WORKS BID AFFIDAVIT. This affidavit must be submitted in its original format, and without material alteration, in order to be compliant and for the bid to be considered responsive. A scanned copy of the completed, signed and properly notarized affidavit may be submitted with the bid, however, the successful bidder must submit the original affidavit in its original format and without material alteration upon contract execution. Failure to comply will result in the bid submission being rejected as non-responsive. The Parish reserves the right to award bid to the next lowest responsive and responsible bidder in this event.
15. **NON PUBLIC WORK BIDS - Completed, Signed and Properly Notarized Affidavits Required** in conformity with the provisions contained in LSA – RS 38:2224 and Sec 2-923.1 of the Jefferson Parish Code of Ordinances. For bidding purposes, all bidders must submit with bid submission COMPLETED, SIGNED and PROPERLY NOTARIZED Affidavits, including: Non-Collusion Affidavit, Debt Disclosures Affidavit and Campaign Contribution Affidavit. For the convenience of vendors, all affidavits have been combined into one form entitled NON PUBLIC WORKS BID AFFIDAVIT. This affidavit must be submitted in its original format, and without material alteration, in order to be compliant and for the bid to be considered responsive. A scanned copy of the completed, signed and properly notarized affidavit may be submitted with the bid, however, the successful bidder must submit the original affidavit in its original format and without material alteration upon contract execution. Failure to comply will result in the bid submission being rejected as non-responsive. The Parish reserves the right to award bid to the next lowest responsive and responsible bidder in this event.
16. The ensuing contract for this bid solicitation may be eligible for FEMA reimbursement and/or Federal funding/reimbursement. As such, the referenced appendix will be applicable accordingly and shall be considered a part of the bid documents. All applicable certifications must be duly completed, signed and submitted with bid submission. Failure to submit applicable certifications with bid submission will result in bid rejection.

It shall be the duty of every parish officer, employee, department, agency, special district, board, and commission: and the duty of every contractor, subcontractor, and licensee of the parish, and the duty of every applicant for certification of eligibility for a parish contract or program, to cooperate with the Inspector General in any investigation, audit, inspection, performance review, or hearing pursuant to Jefferson Parish Code of Ordinances Section 2-155.10(19). By submitting a bid, vendor acknowledges this and will abide by all provisions of the referenced Jefferson Parish Code of Ordinances.



DATE: 1/27/2020

INVITATION TO BID  
THIS IS NOT AN ORDER

Page: 4

BID NO.: 50-00129416

**JEFFERSON PARISH**

PURCHASING DEPARTMENT  
P.O. BOX 9  
GRETN, LA. 70054-0009  
504-364-2678

VENDOR:

BUYER: MBUTTERY

As per LSA-RS 47:301 et seq., all governmental bodies are excluded from payment of sales taxes to any Louisiana taxing body. Quotations shall be based on F.O.B. Agency warehouse or jobsite, anywhere within the Parish as designated by the Purchasing Department.

JEFFERSON PARISH reserves the right to cancel all or any part of an order if not shipped promptly. No charges will be allowed for parking or cartage unless specified in quotation. The order must not be filled at a higher price than quoted. JEFFERSON PARISH reserves the right to cancel at any time and for any reason by issuing a THIRTY (30) day written notice to the contractor.

JEFFERSON PARISH is expecting all products to be new and all work to be done in workman-like manner, according to standard practices. Any deviations or alteration from the specifications must be indicated on the bid form for each item and upon request, product data for same must be submitted by the time specified by the Purchasing Department.

**DELIVERY: FOB JEFFERSON PARISH**

INDICATE DELIVERY DATE ON EQUIPMENT AND SUPPLIES

8 weeks ARO

INDICATE STARTING TIME (IN DAYS) FOR CONSTRUCTION WORK

-

INDICATE COMPLETION TIME (IN DAYS) FOR CONSTRUCTION WORK

-

In the event that addenda are issued with this bid, bidders MUST acknowledge all addenda on the bid form. Bidder must acknowledge receipt of an addendum on the bid form as indicated. Failure to acknowledge any addendum on the bid form will result in bid rejection.

Acknowledge Receipt of Addenda: NUMBER: 1

NUMBER: \_\_\_\_\_

NUMBER: \_\_\_\_\_

NUMBER: \_\_\_\_\_

LOUISIANA CONTRACTOR'S LICENSE NO.: (if applicable) (NOT APPLICABLE)

**\*\*\* ALL BIDDERS MUST COMPLETE SECTION BELOW \*\*\***

FIRM NAME:

Gulf States Engineering Co., Inc.

SIGNATURE:

(Must be signed here)

TITLE:

Project Manager

PRINT OR TYPE NAME:

JAMES CALZADA

ADDRESS:

201 Harbor Circle

CITY, STATE:

New Orleans, Louisiana

ZIP:

70126

TELEPHONE:

(504) 243-5504

FAX:

(504) 243-5508

EMAIL ADDRESS:

jcalzada@gsengr.com

TOTAL PRICE OF ALL BID ITEMS: \$ 5,287.00



# JEFFERSON PARISH

## DEPARTMENT OF PURCHASING

CYNTHIA LEE SHENG  
PARISH PRESIDENT

RENNY SIMNO  
DIRECTOR

February 3, 2020

### ADDENDUM # 1

Bid Number: 50-129416

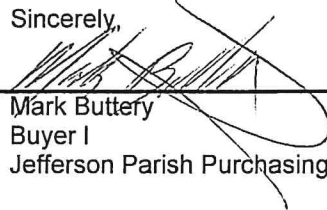
Bid Opening: 11:00 am, February 4, 2020  
Postponed Bid Opening 11:00 am, February 6, 2020

### Description of Bid: Purchase of Butterfly Valve with Rotork IQT Actuator or Approved Equal

This Addenda is to ADD revised specifications from the requesting department.

Omit battery requirement and Bluetooth portion.

Sincerely,

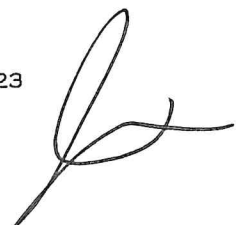
  
Mark Buttery  
Buyer I  
Jefferson Parish Purchasing Department

**Bidders must acknowledge all addenda on the bid form. Bidder acknowledges receipt of This addendum on the bid form as indicated. Failure to do so will result in bid rejection.**

**This addendum is a part of the contract documents and modifies the original bidding documents and specifications. The contents of this addendum shall be included in the contract documents. Changes made by this addendum shall take precedence over the documents of earlier date.**

GENERAL GOVERNMENT BLDG. – 200 DERBIGNY ST., SUITE 4400, GRETN, LA 70053  
OFFICE 504.364.2678

JOSEPH S. YENNI BLDG. – 1221 ELMWOOD PARK BLVD., SUITE 404, JEFFERSON, LA 70123  
OFFICE 504.364.2678  
EMAIL: PURCHASING@JEFFPARISH.NET WEBSITE: WWW.JEFFPARISH.NET





## INVITATION TO BID FROM JEFFERSON PARISH - continued

BID NO.: 50-00129416

SEALED BID

ITEM NUMBER	QUANTITY	U/M	DESCRIPTION OF ARTICLES	UNIT PRICE QUOTED	TOTALS
1	1.00	EA	<p>PURCHASE OF DEZURIK BFV FOR THE EAST BANK DEPARTMENT OF WATER</p> <p>0010 - 8 INCH DEZURIK FLANGED BFV<sup>①</sup> W/ ROTORK IQT ACTUATOR (OR EQUAL)<sup>②</sup></p> <p>REPLACEMENT VALVE AND ACTUATOR FOR P1 HIGH SERVICE PUMP 11 AT THE EASTBANK WATER PLANT (EQUIPMENT ONLY-NO INSTALL)</p> <p>LOCATION: JEFFERSON PARISH EB WATER PLANT 3600 JEFFERSON HWY., BLDG. D JEFFERSON, LA 70121 ATTN: MERVIN GRAVES 504-838-4398</p> <p><i>Notes:</i></p> <p>① Quoting PRATT 8 inch Model 2FII Flanged Butter Fly Valve (As equal or better)-See Attached Sheets A + B for product details.</p> <p>② Quoting Limitorque Model QX-3 Actuator (As equal or better)-See Attached Sheets C thru F for product details.</p> <p>③ Item is quoted AS F.O.B. Jefferson Parish (freight is <u>included</u> in bid price).</p>	\$5,287.00	\$5,287.00



## **Butterfly Valve & Electric Actuator for P1, High Service Pump # 11**

### **Section 1.0 - Scope:**

This bid shall cover valves and actuators at the East Bank Water Treatment Plant.

### **Section 2.0 – Shipping**

Freight for all material covered by this solicitation must be included in the bid price; and all material must be F.O.B. Jefferson Parish East Bank Water Plant, freight prepaid to the plant.

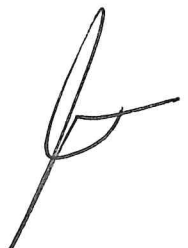
### **Section 3.0 - Bid Specifications:**

8" Dezurik flanged butterfly valve with Rotork motor operator or approved equal.

Butterfly valve shall meet AWWA C504 standards with Class 150B body. Valve shall conform to AIS requirements

Valve seat shall only be in the body of the valve. Seat on the disc is not allowed. Disc seat edge shall be 316SS. Shaft seals are to be self-compensating, V-type packing. Motor operator shall be Rotork IQT3 mounted directly on top. Shall include a double O-ring sealed terminal compartment.

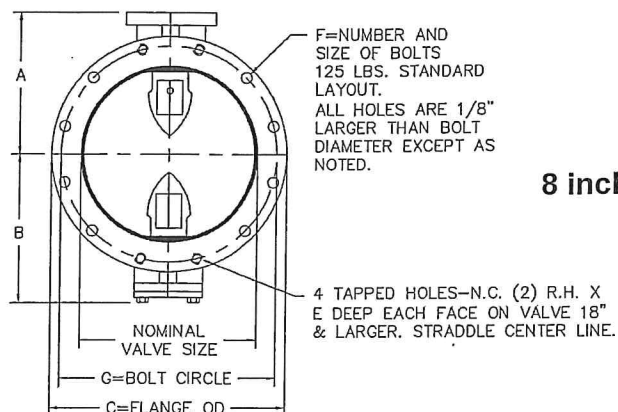
Actuator shall be rated no less than IP68. Pushbuttons on the actuator are not allowed. Motor must have a built-in data logger and come shipped with a hand held setting tool. Setting tool must be capable of downloading settings from actuator. Setting tool must allow for end user to make setting changes to the actuator without the removal of any covers. Price to include start-up by a certified Rotork representative. Complete assembly must be tested and shipped to the jobsite as a complete unit ready for installation....

A handwritten signature in black ink, consisting of a stylized 'F' or 'J' shape with a long horizontal stroke extending to the right.



(Sheet A)

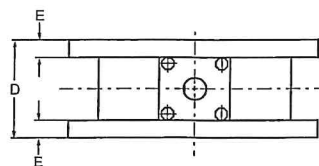
## Dimensional Data: Model 2FII, Flanged Butterfly Valve



8 inch →

Nominal Valve Size	A	B	C	D	E	F	G
3	4-3/4	3 1/4	7-1/2	5	3/4	4 - 5/8	6
4	5-1/2	3-1/2	9	5	15/16	8 - 5/8	7-1/2
6	6-1/2	5-1/8	11	5	1	8 - 3/4	9-1/2
8	7-3/4	6-1/2	13-1/2	6	1-1/8	8 - 3/4	11-3/4
10	9	9-7/8	16	8	1-3/16	12 - 7/8	14-1/4
12	10-1/2	11-3/8	19	8	1-1/4	12 - 7/8	17
14	11-7/8	12-3/4	21	8	1-3/8	12 - 1	18-3/4
16	13-1/2	14-3/8	23-1/2	8	1-7/16	16 - 1	21-1/4
18	14-3/8	15-1/4	25	8	1-9/16	16 - 1-1/8	22-3/4
20	16	16-7/8	27-1/2	8	11-1/16	20 - 1-1/8	25

All dimensions shown in inches.

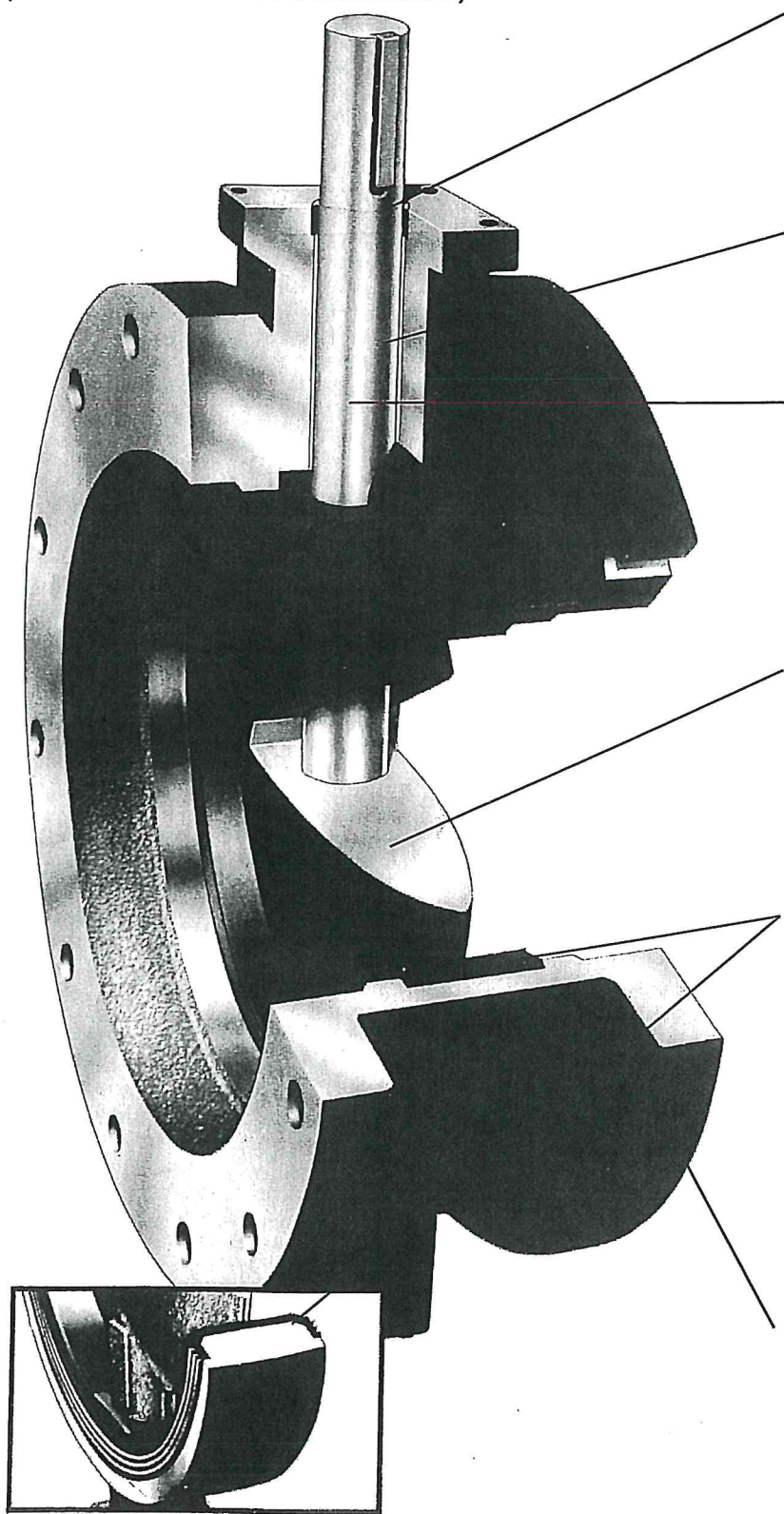


— Available in sizes  
3 through 20 inches

Lay Length (inches)

## Models 2FII

(Meets AWWA C504 Certification)



### Self Adjusting Permanent Packing

Chevron type packing increases sealing force as line pressure increases. The self adjusting packing bears on turned, ground and polished stainless steel, minimizing wear and assuring long life. Packing is accessible for replacement without dismantling the valve per AWWA Standard C504.

### Lifetime Bearings

Our chemically inert nylon bearings are sized to meet or exceed AWWA specification pressure loads. They are self-lubricating, require no periodic maintenance and are designed to outlast the life of the pipeline.

### Corrosion Resistant Shafts

The shafts in the Pratt® rubber seated butterfly valves, 3" through 20", are constructed of centerless, ground ASTM A276 type 304 or type 316 stainless steel bar and thus are not susceptible to corrosion as are carbon steel or other similar materials. Shafts are one-piece, through-shaft construction, sized to meet or exceed the requirements of AWWA Standard C504 for Class 150B butterfly valves.

### Streamlined Discs

Our lens-shaped discs are designed to minimize pressure drop and turbulence. In the full open position, the disc creates no more friction loss than a 45° elbow. Discs are secured to shafts by stainless steel pins to transmit required torques and withstand stresses imposed under a variety of operating conditions.

### Body Seat

Our standard seats are constructed of Buna N rubber and bonded to the valve body in Pratt® manufacturing facility using a unique thermal process. This molding process ensures that the disc-to-seat interference will not cause excessive wear or abrasion under normal operating conditions.

Pratt® seat-in-body design minimizes the effects of corrosive buildup on the inside of the valve because deposits are swept away by the hard sealing edge of the disc each time the valve is exercised.

### Heavy Duty Bodies

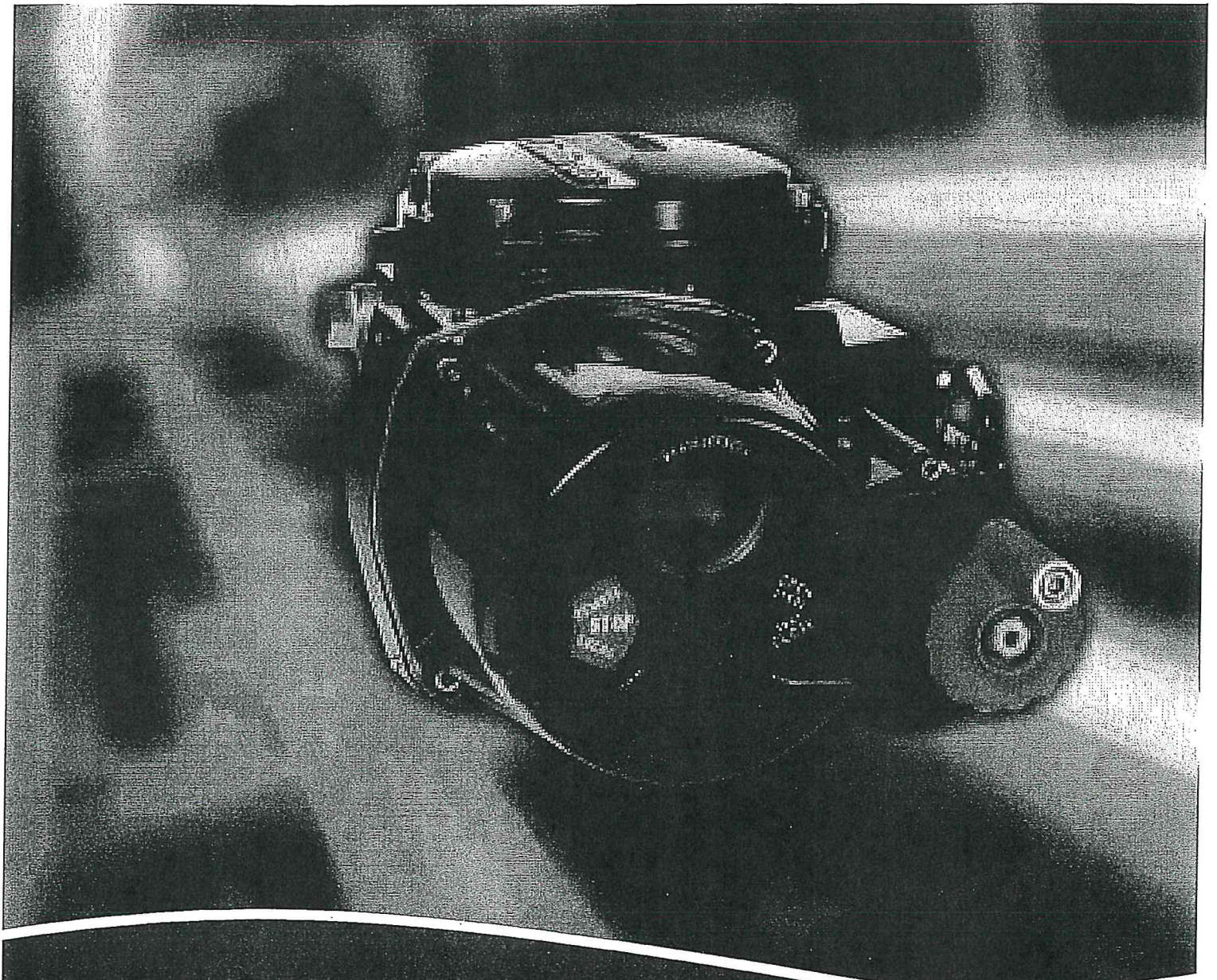
Model 2FII flanges are fully faced and drilled in accordance with ANSI B16.1, Class 125 standard for cast iron flanges.





## *Limitorque QX*

The Next Generation in Smart Quarter-turn Actuation



*Experience In Motion*



## Anatomy of OX Quarter-Turn Actuators

Limbroque OX actuators respond to customer needs with advanced features designed for ease of commissioning and use, as well as time- and money-saving operational benefits. What sets the OX apart is the combination of control and reliability enabled by advanced Limbroque technology, plus superior ergonomics and human interfaces for speed, comfort, and ease of use.

### Brushless DC Motor

Advanced brushless DC motors eliminate sparks, reduce mechanical and electrical noise, and dissipate heat better than brushed motors. Unique to the industry, brushless motors last longer than conventional motors and allow for more accurate positioning while permitting a global range of voltages (single-phase and three-phase AC and DC) to be used without modification.

### Terminal Chamber

Double-sealed design provides a termination chamber that is separate and sealed from the control chamber. Control components are never exposed to the elements during site wiring or because of a faulty cable connection.

### Absolute Encoder

The OX encoder employs system-on-chip technology using a non-contacting magnet to excite Hall effect devices, providing redundancy, 12-bit resolution over 360°. This redundancy part of the BIST feature, means the device can continue to function reliably until a number of faults have been accumulated.

### Worm Gear Set and Motor Gear Attachment

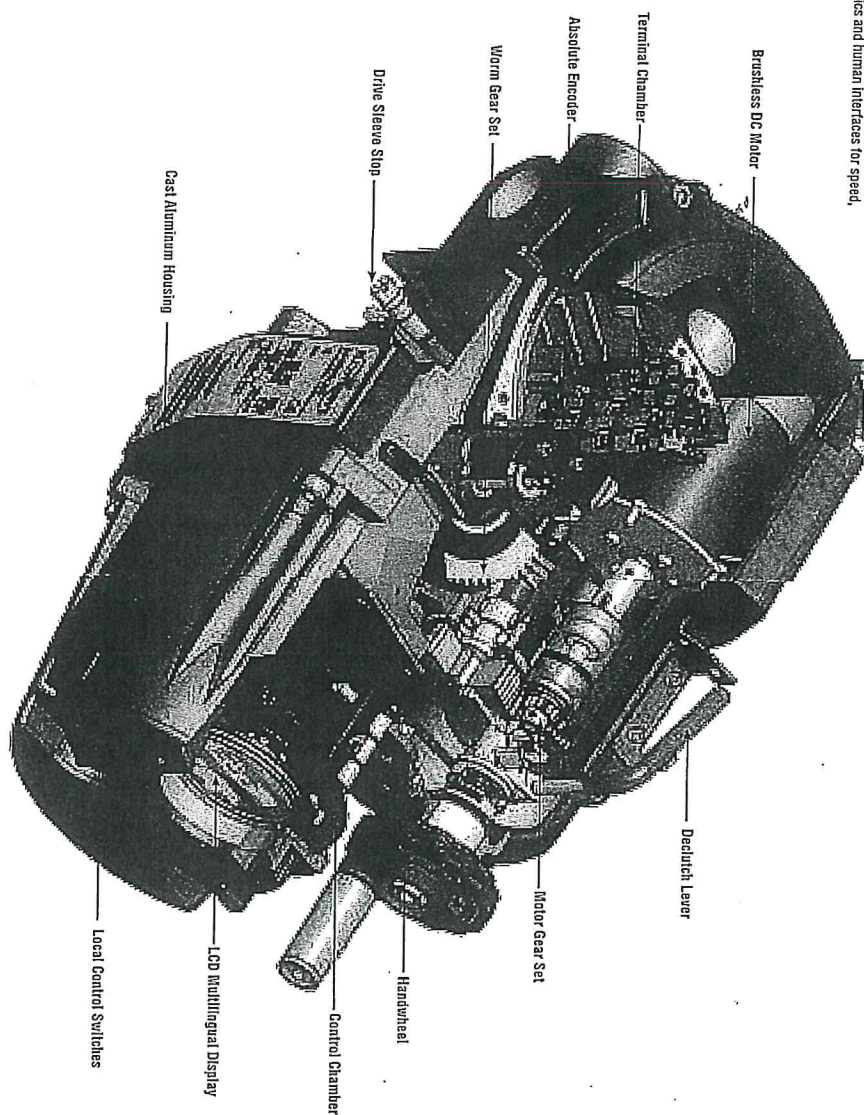
Both the motor gear reducers and worm gear sets are designed with Limbroque performance and longevity in mind. Rolled ground gears are heavily supported and immersed in an extended life synthetic gear oil specifically designed to improve efficiency and minimize wear.

### Drive Sleeve Stop

Drive sleeve stops are supplied for 90° selections and removed for multi-turn applications, up to 20 turns maximum.

### Cast Aluminum Housing

The OX housing material is cast 356-T6 grade aluminum. This alloy was selected due to its superior suitability for corrosion resistance in harsh and eroding environments.



### Decolich Lever

Decolich lever enables the OX actuator to be placed in manual, handwheel-off operation. Lever automatically disengages when motor is energized and can be padlocked in the motor position.

### Torque Sensing

The OX continues the Fiveserve Limbroque commitment to fully electronic smart actuators with advanced torque sensing. This method of torque control uses motor amperage to sense the valve load and has been verified in temperature extremes from -50°C to 170°C.

### Handwheel

OX handwheels are manufactured from an engineered resin and are designed to meet most minimum rim pull requirements. Locating the handwheel adjacent to the LCD and controls facilitates local configuration and operation.

### Control Chamber

Utilizing the same electronics package as the state-of-the-art MX, the OX has an additional feature - a solid state motor controller. This design permits almost all customer supplied voltages, single or three phase AC or DC, to be connected without modification to the voltage supply.

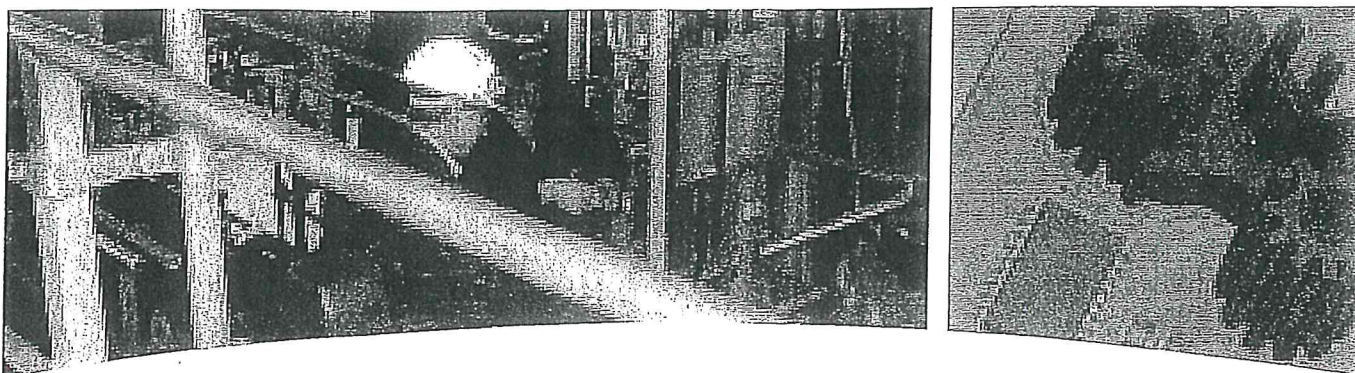
### LCD Multilingual Display

The control panel display delivers instant, up-to-the-minute actuator status and valve position in 10 languages. It also provides simple calibration and diagnostic information, including motor identification and hardware data, as well as torque profile and log reports.

### Local Control Switches

Local control switches make setup and calibration easy, using "Yes" or "No" responses to straightforward questions, plus they provide the ability to open, stop and close the actuator and to select remote or local preferences. These switches are magnetically coupled, solar-state Hall effect devices, which eliminate troublesome and fragile reel switches.





## ***QX: The Next Generation in Smart Quarter-turn Actuation***

### ***Speed, Precision and Simplicity***

The QX control panel features an improved 32-character LCD screen that provides actuator status and diagnostics in an easy-to-use, easy-to-read, graphical format. The industry's first non-intrusive, quarter-turn multilingual actuator is configurable in English, Spanish, German, French, Italian, Portuguese, Mandarin, Russian, Bahasa Indonesia and Katakana as standard configuration languages. In addition, the LCD can be rotated 180° for better field visibility.

User friendliness, precision, simplicity, and intuitive setup are characteristics expected of a smart actuator. Users and valve OEMs demand quick setup and easy-to-understand dialogue in preferred languages. The ability to either upload new software or download diagnostics is also critical to improving a plant's efficiency. The QX provides customers with the essential tools for rapid installation and root-cause diagnostics.

Precision is expected in a smart actuator. The MX was the first such device developed with an absolute encoder that doesn't require troublesome and unpredictable battery

backup. Flowserve Limitorque's innovative absolute encoder technology, developed for the MX, is used in the QX. The QX encoder employs system-on-chip technology using a contactless magnet that excites Hall-effect devices to provide redundant, 12-bit resolution over 360 degrees. This redundancy, part of the BIST (built-in self-test) feature, means the device can continue to function reliably until a number of faults have been accumulated.

When a device is designed for BIST, its methodology is such that much of the test functionality is embedded in the device itself. BIST design enables a critical component's ability to communicate its actual state to a CPU for comparison to the expected state. Any deviation from expected values will be reported to the user, with correlation to the failed component or subsystem.

Simplicity is expected in a smart actuator. In fact, one of the reasons for using an electronic actuator is the simplicity of setup, installation on a valve and acquiring diagnostic information. The QX is the simplest and easiest to use electronic quarter-turn actuator.







## QX Standard Features

The Flowserve Limitorque QX quarter-turn, smart electronic valve actuator is designed for the reliable operation of either ON-OFF or modulating quarter-turn valves. It includes a brushless DCV motor as standard, which can auto-correct to accept any global input voltage, single- or three-phase AC, or DC, an absolute encoder, electronic torque sensing, complete electronic control including a motor control board, state-of-the-art protection, control and monitoring features, mechanical gear reduction including worm gear as final output drive, declutch mechanism and handwheel for manual operation, valve interface bushing, 32-character LCD, local and remote control switches, built-in self-test (BIST) features and LimiGard fault protection. These features are all contained in a non-intrusive enclosure that is double-sealed to NEMA 4, 4X, 6, IP68 to 20M for 168 hours (and explosion-proof as required).

## Power transmission and lubrication

All mechanical gearing components are bearing supported, and final drive (output) consists of a hardened alloy steel worm and alloy worm gear. All gears are immersed in an oil-bath lubricated with a synthetic oil designed specifically for extreme pressure worm and worm gear transmission service. Special lubricants are available for operation in temperatures of less than -30°C. Consult factory.

LUBRICATION & TEMPERATURE RANGE	SYNTHETIC BRAND
Standard Lubrication, -30°C to +70°C	Petro-Canada SHB 68 or Mobil SHC 626
Optional Food Grade Lubrication, -30°C to +70°C	Dow Molykote

## Motor

The QX motor is unique to quarter-turn electronic valve actuators. It is a brushless DC motor specifically designed for the QX actuator and complies with IEC 34, S2-50 percent duty cycle at 50 percent of rated torque. The motor is a true bolt-on design with a quick-disconnect plug that can be changed rapidly without sacrificing motor leads. It is equipped with a solid-state motor thermistor to prevent damage due to temperature overloads.

### ON-OFF MODULATING

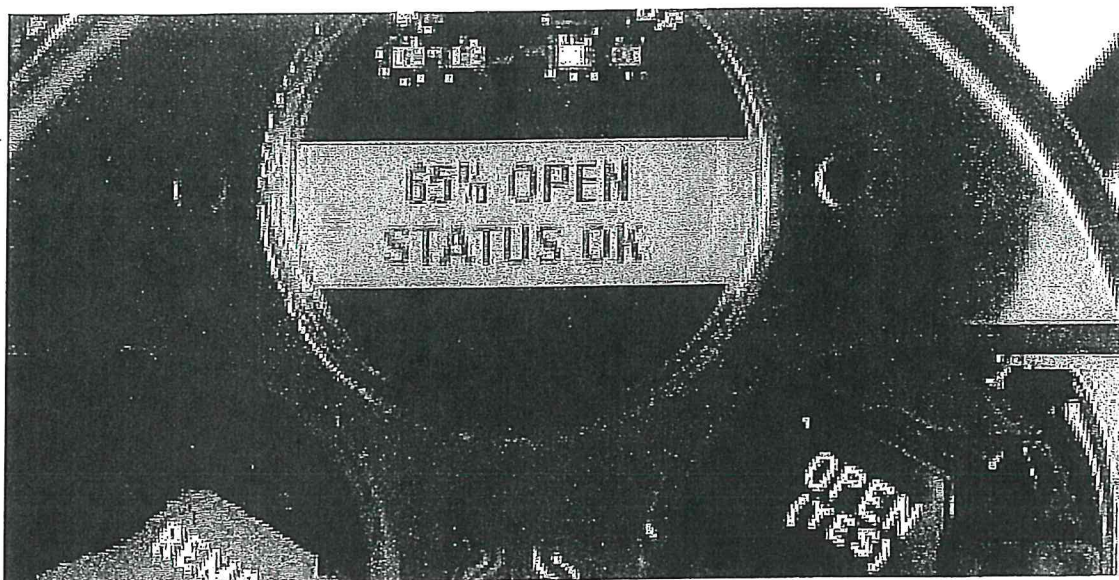
Standard Insulation class is F to IEC 34, S2-50% for stated operating times  
100-600 starts per hour

600-1800 starts per hour, IEC 34, S4\_50%\_1800 S/H

The QX motor permits a global range of voltages (single-phase and three-phase ACV and DCV) to be connected without modification. The motor can energize, provided either of the listed voltages are connected:

Phase/Frequency	Application Voltage
VDC	24-48
1ph - 60 Hz	110, 115, 120, 240
<del>1ph - 50 Hz</del>	<del>220-250</del>
3ph - 60 Hz	208, 220, 230, 240, 380, 440, 460, 480, 550, 575, 600
<del>3ph - 50 Hz</del>	<del>220, 380, 400, 415, 440, 525</del>

Notes: 1) Jeff Parish to select power input of their choice;







GULFSTA-04

BJOY

## CERTIFICATE OF LIABILITY INSURANCE

DATE (MM/DD/YYYY)  
10/15/2019

THIS CERTIFICATE IS ISSUED AS A MATTER OF INFORMATION ONLY AND CONFERS NO RIGHTS UPON THE CERTIFICATE HOLDER. THIS CERTIFICATE DOES NOT AFFIRMATIVELY OR NEGATIVELY AMEND, EXTEND OR ALTER THE COVERAGE AFFORDED BY THE POLICIES BELOW. THIS CERTIFICATE OF INSURANCE DOES NOT CONSTITUTE A CONTRACT BETWEEN THE ISSUING INSURER(S), AUTHORIZED REPRESENTATIVE OR PRODUCER, AND THE CERTIFICATE HOLDER.

**IMPORTANT:** If the certificate holder is an ADDITIONAL INSURED, the policy(ies) must have ADDITIONAL INSURED provisions or be endorsed. If SUBROGATION IS WAIVED, subject to the terms and conditions of the policy, certain policies may require an endorsement. A statement on this certificate does not confer rights to the certificate holder in lieu of such endorsement(s).

PRODUCER License # 231432  
Hub International Gulf South  
3510 N. Causeway Boulevard, Suite 300  
Metairie, LA 70002

CONTACT  
NAME:  
PHONE (A/C, No, Ext): (800) 256-2842 FAX (A/C, No): (504) 834-2995  
E-MAIL ADDRESS:

INSURED

Gulf States Engineering Co,  
17961 Painters Row  
Covington, LA 70435

INSURER(S) AFFORDING COVERAGE  
INSURER A: Travelers Commercial Casualty Company NAIC # 40282

INSURER B:  
INSURER C:  
INSURER D:  
INSURER E:  
INSURER F:

## COVERAGES

CERTIFICATE NUMBER:

REVISION NUMBER:

THIS IS TO CERTIFY THAT THE POLICIES OF INSURANCE LISTED BELOW HAVE BEEN ISSUED TO THE INSURED NAMED ABOVE FOR THE POLICY PERIOD INDICATED. NOTWITHSTANDING ANY REQUIREMENT, TERM OR CONDITION OF ANY CONTRACT OR OTHER DOCUMENT WITH RESPECT TO WHICH THIS CERTIFICATE MAY BE ISSUED OR MAY PERTAIN, THE INSURANCE AFFORDED BY THE POLICIES DESCRIBED HEREIN IS SUBJECT TO ALL THE TERMS, EXCLUSIONS AND CONDITIONS OF SUCH POLICIES. LIMITS SHOWN MAY HAVE BEEN REDUCED BY PAID CLAIMS.

INSR LTR	TYPE OF INSURANCE	ADDL INSD	SUBR WVD	POLICY NUMBER	POLICY EFF (MM/DD/YYYY)	POLICY EXP (MM/DD/YYYY)	LIMITS
A	<input checked="" type="checkbox"/> COMMERCIAL GENERAL LIABILITY <input type="checkbox"/> CLAIMS-MADE <input checked="" type="checkbox"/> OCCUR  GEN'L AGGREGATE LIMIT APPLIES PER: <input type="checkbox"/> POLICY <input checked="" type="checkbox"/> PRO-JECT <input type="checkbox"/> LOC OTHER:			Y6609262N786PHX19	10/8/2019	10/8/2020	EACH OCCURRENCE \$ 1,000,000 DAMAGE TO RENTED PREMISES (Ea occurrence) \$ 100,000 MED EXP (Any one person) \$ 5,000 PERSONAL & ADV INJURY \$ 1,000,000 GENERAL AGGREGATE \$ 2,000,000 PRODUCTS - COMP/OP AGG \$ 2,000,000 \$
A	AUTOMOBILE LIABILITY <input checked="" type="checkbox"/> ANY AUTO <input type="checkbox"/> OWNED AUTOS ONLY <input type="checkbox"/> SCHEDULED AUTOS <input type="checkbox"/> HIRED AUTOS ONLY <input type="checkbox"/> NON-OWNED AUTOS ONLY			BA9262N78619CAG	10/8/2019	10/8/2020	COMBINED SINGLE LIMIT (Ea accident) \$ 1,000,000 BODILY INJURY (Per person) \$ BODILY INJURY (Per accident) \$ PROPERTY DAMAGE (Per accident) \$ \$
A	UMBRELLA LIAB <input checked="" type="checkbox"/> OCCUR <input checked="" type="checkbox"/> EXCESS LIAB <input type="checkbox"/> CLAIMS-MADE DED <input checked="" type="checkbox"/> RETENTION \$ 10,000			CUP-8J435428-19-14	10/8/2019	10/8/2020	EACH OCCURRENCE \$ 5,000,000 AGGREGATE \$ Aggregate \$ 5,000,000
A	WORKERS COMPENSATION AND EMPLOYERS' LIABILITY ANY PROPRIETOR/PARTNER/EXECUTIVE OFFICER/MEMBER EXCLUDED? (Mandatory in NH) <input type="checkbox"/> Y/N If yes, describe under DESCRIPTION OF OPERATIONS below		N/A	UB1L0754481814G	10/8/2019	10/8/2020	PER STATUTE <input type="checkbox"/> OTH-ER <input type="checkbox"/> E.L. EACH ACCIDENT \$ 1,000,000 E.L. DISEASE - EA EMPLOYEE \$ 1,000,000 E.L. DISEASE - POLICY LIMIT \$ 1,000,000

DESCRIPTION OF OPERATIONS / LOCATIONS / VEHICLES (ACORD 101, Additional Remarks Schedule, may be attached if more space is required)

## CERTIFICATE HOLDER

## CANCELLATION

For Infomational Purposes Only

SHOULD ANY OF THE ABOVE DESCRIBED POLICIES BE CANCELLED BEFORE THE EXPIRATION DATE THEREOF, NOTICE WILL BE DELIVERED IN ACCORDANCE WITH THE POLICY PROVISIONS.

AUTHORIZED REPRESENTATIVE



## ADDITIONAL REMARKS SCHEDULE

AGENCY Hub International Gulf South		License # 231432	NAMED INSURED Gulf States Engineering Co, 17961 Painters Row Covington, LA 70435
POLICY NUMBER SEE PAGE 1			
CARRIER SEE PAGE 1	NAIC CODE SEE P 1	EFFECTIVE DATE: SEE PAGE 1	

## ADDITIONAL REMARKS

THIS ADDITIONAL REMARKS FORM IS A SCHEDULE TO ACORD FORM,

FORM NUMBER: ACORD 25 FORM TITLE: Certificate of Liability Insurance

## Additional Terms and Conditions

## COMMERCIAL GENERAL LIABILITY:

Additional Insured status is extended to any person or organization when agreed upon by the Named Insured in a written contract or agreement executed prior to the loss. Waiver of Subrogation is extended to any person or organization when agreed upon by the Named Insured in a written contract or agreement executed prior to the loss.

## AUTO LIABILITY:

Additional Insured status is extended to any person or organization when agreed upon by the Named Insured in a written contract or agreement executed prior to the loss. Waiver of Subrogation is extended to any person or organization when agreed upon by the Named Insured in a written contract or agreement executed prior to the loss.

Comprehensive and Collision are included on the Auto policy for symbols 2 & 8. There is a \$1,000 deductible for each.

## WORKERS' COMPENSATION/EMPLOYERS LIABILITY:

Policy contains Voluntary Compensation Employers Liability, Longshore and Harbor Workers Compensation Act, Gulf of Mexico Extension, Outer Continental Shelf Lands Act, Maritime Coverage (\$100,000), Voluntary Compensation Maritime. Waiver of Subrogation is extended to any person or organization when agreed upon by the Named Insured in a written contract or agreement executed prior to the loss. Item 3A - LA, MS. Item 3C - AL, AR, AZ, CA, CO, CT, DC, DE, FL, GA, HI, IA, ID, IL, IN, KS, KY, MA, MD, ME, MI, MN, MO, MT, NC, NE, NH, NJ, NM, NV, NY, OK, OR, PA, RI, SC, SD, TN, TX, UT, VA, VT, WI, WV.

## UMBRELLA LIABILITY:

Policy follows form over the Commercial General Liability, Auto Liability and Employers Liability.

Subject policies shall be primary insurance and exclusive of any other existing valid and collectable insurance coverage available to any member of Company Group.

All terms, conditions, and coverages apply as per the actual policies.